

GENERAL COMMISSION ON ARCHIVES & HISTORY
THE UNITED METHODIST CHURCH

OFFICIAL JOURNAL
**WEST TEXAS ANNUAL
CONFERENCE**

METHODIST EPISCOPAL CHURCH



Held In The
St. James Methodist Episcopal Church
WACO, TEXAS

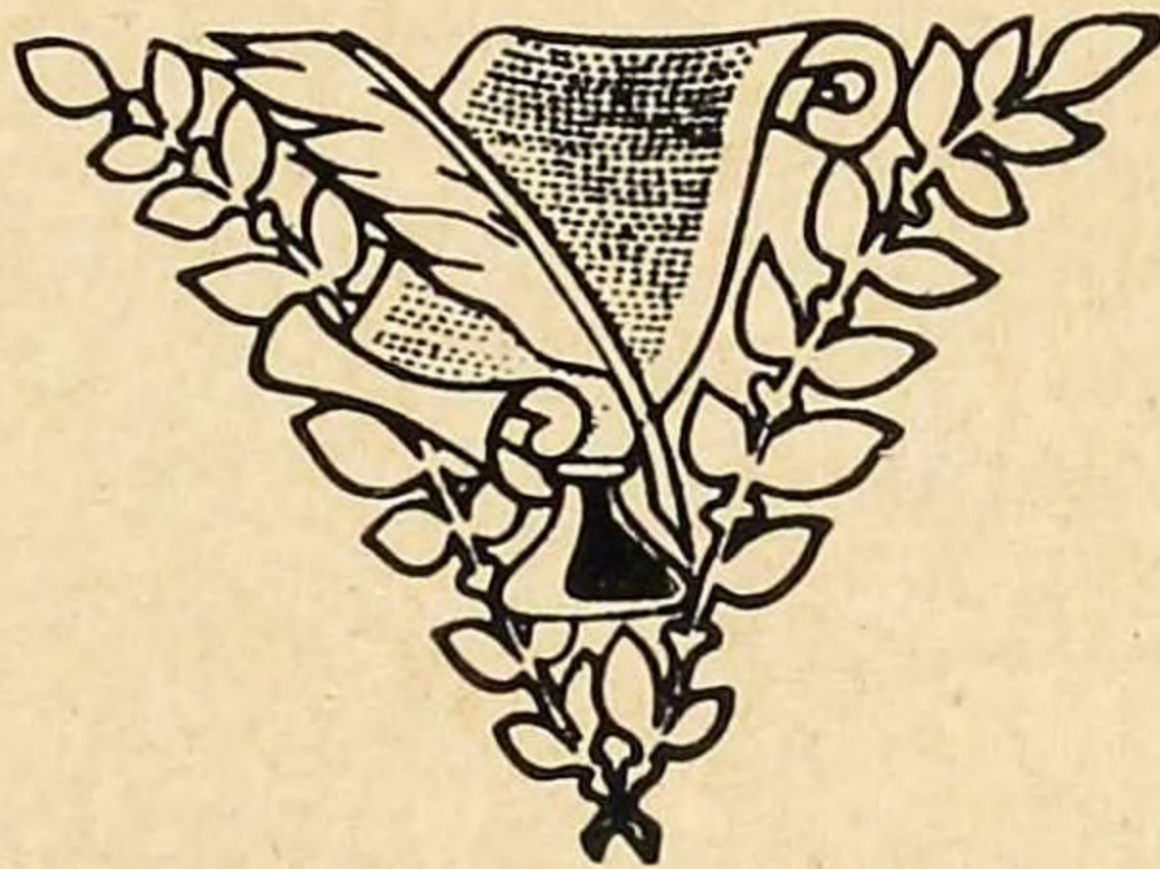
OCTOBER 20-24-1937

Bishop Alexander Preston Shaw, D.D., Presiding Bishop
Rev. W. W. Baker, Secretary-Editor, Victoria, Texas
Rev. Zan W. Holmes, Host Pastor, Waco, Texas
Rev. J. Walt Moore, Host District Supt., Waco, Texas

OFFICIAL JOURNAL

SIXTY-THIRD SESSION

WEST TEXAS ANNUAL
CONFERENCE



Held In The

St. James Methodist Episcopal Church

WACO, TEXAS

OCTOBER 20-24-1937

Bishop Alexander Preston Shaw, D.D., Presiding Bishop
Rev. W. W. Baker, Secretary-Editor, Victoria, Texas
Rev. Zan W. Holmes, Host Pastor, Waco, Texas
Rev. J. Walt Moore, Host District Supt., Waco, Texas
Publishing Board: F. D. Young, Chairman; J. W. Warren,
Treasurer; J. B. Phoenix, T. H. Foy, J. Walt Moore, and
Stanley E. Grannum.

TABLE OF CONTENTS

(According to the Standard Table of Contents, as required by paragraph 232, section 2, of the Discipline of 1936.)

I.—Officers

- (a) Of the Annual Conference
- (b) Of the Lay Conference

II.—Boards, Commissions, and Committees

III.—Daily Proceedings

IV.—Disciplinary Questions

- (a) Of the United Sessions of the Annual and Lay Conference
- (b) Of the Annual Conference

V.—Appointments

VI.—Reports

- (a) District Superintendents
- (b) Standing Committees and Boards
- (c) Special Committees
- (d) Conference Statistician
- (e) Conference Treasurer
- (f) Other Treasurers
- (g) Miscellaneous

VIII.—Roll of the Dead

IX.—Historical Data

X.—Conference Roll

WEST TEXAS ANNUAL CONFERENCE

Methodist Episcopal Church

I.—Conference Officers

(a) Of The Annual Conference

President-----Bishop A. P. Shaw, D.D.
631 Baronne Street, New Orleans, La.
Secretary, W. W. Baker-----Victoria, Texas
Assistant Secretaries-----J. H. Marshall, C. R. Green
Statistician, J. A. Wills-----Seguin, Texas
Assistant Statisticjans: Obie Coe, W. A. Robinson, Joel Jordan, J. F. Muse,
Ira B. Loud, J. H. Childs, A. D. Holden
Treasurer, C. E. Whitaker-----Austin, Texas
Assistant Treasurers: G. A. Deslandes, J. J. Hardeman, R. W. Allen, A. D.
Jacques

(b) Of the Lay Conference

President, A. C. Wilson-----Marlin, Texas
Secretary, (Mrs.) C. S. Williams-----908 Crockett St., San Antonio, Texas
Treasurer, T. D. Marshall-----2806 Munger Ave., Dallas, Texas

II.—Boards, Commissions and Committees

DEACONESS BOARD: C. E. Whitaker, chairman; Miss V. M. Sanders,
Mrs. M. M. Sanford, Mrs. D. N. Swann.
BOARD OF MINISTERIAL TRAINING: K. W. McMillan, chairman; T. B.
Echols, registrar.
ADMISSION ON TRIAL: K. W. McMillan, chairman; W. M. Ellison, Jr.,
Zan W. Holmes.
CONFERENCE RELATION: T. H. Wyatt, chairman; K. W. McMillan;
L. L. Haines, F. J. Hutchison, J. G. Brown, R. W. Allen, C. E. Whitaker,
M. L. Wyatt, L. E. Muse, J. H. Childs.
FIRST YEAR: J. H. R. Dudley, L. L. Haynes.
SECOND YEAR: T. B. Echols, J. B. Phoenix.
THIRD YEAR: J. Walt Moore, H. O. McCutchens.
FOURTH YEAR: C. E. Whitaker, S. E. Grannum.
PUBLISHING BOARD: District superintendents, conference secretary, and
president of Samuel Huston College.
BOARD OF HOME MISSIONS and CHURCH EXTENSION: T. H. Wy-
att, C. E. Whitaker, S. E. Grannum, J. H. R. Dudley, R. W. Allen, L. W.
Lyons, and S. N. Harvey.
CONFERENCE TRUSTEES: J. W. Warren, F. D. Young, J. B. Phoenix,
H. A. Jones, C. E. Whitaker, Zan Holmes, K. W. McMillan, G. A. Des-
landes, J. W. Moore, N. B. Lott, C. W. Franklin, B. F. Lee, and J. H. R.
Dudley.
INSTITUTE COMMISSION: C. E. Whitaker, A. D. Jacques, Z. N. Holmes,
G. A. Deslandes, J. H. R. Dudley, and district superintendents.

STANDING COMMITTEES

- AUDITING COMMITTEE:** J. H. Childs, J. H. R. Dudley, R. W. Allen, and Joel Jordan.
- BONDING COMMITTEE:** District superintendents and T. H. Wyatt, chairman.
- CHURCH LOCATION:** District superintendents, L. L. Haynes, Wm. Ellison, Sr., S. D. Mosley, J. H. Strait and T. F. D. Simms.
- EDUCATION AND CHURCH SCHOOL:** S. E. Grannum, T. B. Echols, J. H. Marshall, D. B. Baker, G. A. Deslandes, B. F. Lee, R. A. Appling, J. B. Phoenix.
- EPISCOPAL FUND:** L. L. Haynes, F. D. Young, C. R. Green, W. M. Ellison, Jr., J. W. Warren, I. H. Pierce, S. G. Graham, and G. W. Kelly.
- EPWORTH LEAGUE:** Zan W. Holmes, O. B. Coe, I. B. Loud, A. D. Jacques, G. F. Alexander, H. E. Kuykendall, J. H. Wattley, and M. B. Burkley.
- EVANGELISM:** T. H. Foy, R. A. Appling, R. L. Palmer, A. G. Russell, J. J. Hardeman, J. B. Eggleston.
- GULF SIDE:** T. B. Echols, A. G. Russell, G. A. Deslandes, K. W. McMillan, T. H. Wyatt, H. A. Jones, R. W. Allen, Obie Coe, B. F. Stewart.
- LADIES AID SOCIETY:** A. M. Mason, R. L. Palmer, Dee Tucker, F. J. Hutchinson, S. G. Graham.
- MEMOIRS:** J. W. Mayes, J. H. Childs, A. M. Mason, W. B. Lott, A. D. Jacques, J. J. Hardeman, T. M. Bruton.
- MINIMUM SALARY:** S. G. Graham, O. McCullough, E. M. Cooper, M. C. Ellison, Mrs. D. N. Swann, J. S. Henry, Tom Bevin.
- PENSIONS and RELIEF:** C. E. Whitaker, D. B. Baker, (Mrs.) M. T. Reed, J. N. Hooey, L. E. Muse, D. F. Vance, W. B. Lott.
- PERIODICALS:** J. G. Brown, B. A. Byars, Joel Jordan, E. N. King, W. M. Mosley, O. K. Brewster, and L. E. Muse.
- PROHIBITION:** A. D. Jacques, R. A. Appling, I. C. Greer, G. V. Cavitt, J. L. Jones.
- PUBLIC WORSHIP:** K. W. McMillan, F. D. Young, R. W. Weaver, C. Morrow, J. W. V. Hutchinson, D. B. Baker, K. W. McMillan, Jr., Mrs. M. K. Davis, W. D. Kirkpatrick, Imogene Collins, and Mrs. A. B. Kennard.
- REFERENCES:** T. H. Wyatt, G. A. Deslandes, J. W. Warren, M. L. Wyatt, Joel Jordan, D. B. Baker, M. W. Stevens, J. H. Strait.
- COMPLIMENTARY COMMITTEE:** J. H. R. Dudley, H. O. McCutchens, S. D. Mosley, B. F. Lee, T. H. Bryant, S. A. Keesee.
- SABBATH OBSERVANCE:** C. W. Franklin, J. J. Hardeman, D. F. Vance, Mrs. Nathaniel Isaacs, J. H. Brown, I. H. Pierce, H. Clay Willis.
- SAMUEL HUSTON COLLEGE:** S. E. Grannum, T. H. Wyatt, L. L. Haynes, Mrs. J. D. Martin, Dr. S. L. Brown, and district superintendents.
- STATE of the CHURCH:** Stanley E. Grannum, T. B. Echols, A. D. Jacques, J. H. Strait, J. W. Warren, and N. M. Mosley.
- TRIERS OF APPEALS:** G. A. Deslandes, Zan Holmes, L. L. Haynes, T. H. Wyatt, K. W. McMillan. Reserves: H. O. McCutchens, J. H. R. Dudley.
- WOMAN'S HOME MISSION:** Joel Jordan, T. H. Bryant, Miss V. M. Sanders, Mrs. C. E. Hoyt, Mrs. D. N. Swann.

III.—Daily Proceedings

FIRST DAY—MORNING SESSION

Wednesday, October 20, 1937

Opening: The sixty-third Session of the West Texas Annual Conference convened at St. James Methodist Episcopal Church, Waco, Texas, Wednesday morning, October 24, 1937, at 9:30 o'clock with Bishop A. P. Shaw presiding. The day was as clear as a crystal with a liberal touch of fall temper. The St. James choir in beautiful procession led in the singing of "Holy! Holy! Holy!" The conference's traditional hymn "And are we yet alive?" was announced by Bishop Shaw.

Dr. E. W. Kelly offered prayer and Bishop Shaw read from New Testament Mark 15:29-38. The Bishop spoke convincingly from the text: "If thou be the Son of God, come down from the cross." An offering of \$9:36 was taken for conference purposes. The Sacrament of the Lord's Supper was administered by the Bishop, assisted by the district superintendents and the host pastor, Zan W. Holmes. Two hundred sixteen persons shared in the Holy Communion.

Roll call: The Bishop called the secretary of the last session of the conference, W. W. Baker, to call the roll.

The conference stood in silence as the names of Geo. Waters, J. W. Stone, Sr., and C. H. Hamilton were read. Bishop Shaw led the conference in prayer.

Secretary: On motion of Obie Coe and second by several of the brethren, W. W. Baker was elected secretary of the conference and was permitted to name his assistants. The following were named and confirmed: C. R. Green and J. H. Marshall.

Statistician: On motion of K. W. McMillan, Rev. J. A. Wills was elected statistician for next year and he named the following assistants: Obie Coe, W. A. Robinson, Joel Jordan, F. M. Hudspeth, J. F. Muse, Ira B. Loud, J. H. Childs, and A. D. Holden. The conference approved.

Treasurer: E. Whitaker was elected treasurer for 1938, being elected previously for this year, as was the statistician. On his motion, G. A. Deslandes, J. J. Hardeman, R. W. Allen and A. D. Jacques were approved as assistants.

Reporters: On motion of J. W. Moore, Charles L. Warren was elected reporter to the local papers. On motion of J. W. Warren, L. L. Haynes was elected reporter to the Christian Advocate, Southwestern Edition.

Song leader: On motion of L. L. Haynes, B. F. Lee was elected song leader.

Bar of conference: On motion of J. H. R. Dudley, the bar of the conference was fixed to include the first four rows of seats.

On motion of K. W. McMillan, the printed program was adopted with minor changes as the conference thought advisable.

The following visitors were introduced: Dr. M. C. Harris, President of Philander Smith College, representing the Board of Education, who briefly, but forcibly addressed the conference; Rev. J. E. Dixon, Presbyterian Church, Waco; Prof. J. H. Hines, Rev. E. W. Kelly, Scotts Memorial Church, Detroit, Michigan; Rev. G. E. D. Belcher, Texas Conference; Rev. J. W. Bennet, A. M. E. Church; Mrs. Eliza Huff-Ellsford, St. Louis, Missouri; Mrs. Frank Delaney, Denver, Colorado; Mrs. Walter Fowler, Denver, Colorado.

Announcements: Bishop Shaw announced that the evening services would be changed; the sermon by Rev. Whitaker to come in the afternoon and the district superintendents' and pastors' reports to be read at the evening services.

Memorial Services: The annual memorial services were conducted by J. W. Mays. The names of the following deceased ministers and ministers' wives were called: Geo. Waters, J. W. Stones, C. H. Hamilton, Mrs. J. N. Hooey, and Mrs. J. H. Hutchinson, W. B. Lott read the Scripture and B. F. Lee led the singing.

Rev. S. N. Harvey preached tenderly the memorial sermon.

The benediction was pronounced by S. N. Harvey.

A. P. SHAW, President

W. W. BAKER, Secretary

FIRST DAY—AFTERNOON SESSION

Opening: The conference opened promptly at 2:30 with I. H. Pierce in charge of devotions. M. A. Robinson offered prayer and B. F. Lee led in the singing.

Presentation: Little Miss Willie Mae Perkins of the St. James Mothers' Jewels presented a beautiful bouquet of flowers to Bishop Shaw and the conference. Bishop Shaw appropriately accepted the flowers.

Standing Committees: The list of standing committees was read by J. Walt Moore, secretary of the cabinet. Discussion arose and on motion of K. W. McMillan the report was partially received and referred back to the cabinet.

Book Concern Accounts: A representative of the Methodist Book Concern was introduced and requested payment of accounts. Bishop Shaw appointed G. A. Deslandes as collector of Book Concern accounts.

Report of District Superintendents: J. W. Warren, District Superintendent of the Austin District, was passed in character and made his report. The effective elders of the Austin District were all passed in character and made their reports as follows: R. W. Allen, B. A. Byars, C. E. Whitiker, J. N. Hooey, R. W. Baker, F. J. Hutchinson, R. A. Appling, J. L. Wattley, A. D. Jacques, G. W. Kelly, S. W. Harvey, J. H. Carruthers, T. M. Bruton, B. F. Steward and Joel Jordan.

F. D. Young, District Superintendent of the Dallas District, was passed in character and made his report. Effective elders of the Dallas District were all passed in character and their reports to be made at the evening session.

Music: Mt. Zion M. E. Church's choir rendered beautiful numbers to the delight of the conference.

Introductions: Rev. L. A. Thigpen, pastor of St. James M. E. Church, Beaumont, Texas.

Sermon: Rev. C. E. Whitiker, pastor of Wesley Chapel M. E. Church, Austin, Texas, delivered a powerful and thoughtful sermon, using as his theme: "Being Christian Under Difficulties." The text used was Matt. 26:33. Rev. J. H. R. Dudley was in the choir at this service and Rev. A. D. Jacques led the conference in prayer. After the sermon the conference sang "Lift Him Up."

Benediction: Benediction was pronounced by C. E. Whitiker.

A. P. SHAW President

W. W. Baker, Secretary

FIRST DAY—EVENING SESSION

Opening.—The evening session was opened at 7:30 o'clock with Bishop A. P. Shaw presiding. Bishop Shaw made reference to the change in order of business as scheduled by the printed program. The district superintendents' and pastor's reports would be heard at the evening services for the benefit of the laity and friends, in place of the customary preaching services.

Journal.—The journal of the morning session was read and approved.

District Superintendents' and Pastors' Reports.—J. B. Phoenix, district superintendent of the San Antonio District, was passed in character and made his report to a packed house. The effective elders of the San Antonio District were called, passed in character, and the following made their reports: M. M. Majors, J. W. Maye, R. L. Palmer, C. W. Franklin, J. F. Muse, M. L. Wyatt, W. M. Mosely, Obie Coe, M. W. Stevens, A. M. Mason, T. H. Wyatt, W. M. Ellison, G. A. Deslandes, W. B. Lott, and G. F. Alexander.

The effective elders, who were passed in character at the afternoon session, made their reports as follows: T. J. D. Simms, J. H. Childs, G. V. Cavett, J. H. R. Dudley, I. C. Greer, I. H. Pierce, K. W. McMillan, D. B. Baker, J. W. V. Hutchinson, J. W. Wills, S. G. Graham, E. N. King, H. O. McCutcheon, C. R. Green, B. F. Lee, E. D. Spencer, J. D. Mackey, L. L. Haynes, M. B. Burkley.

Offering.—An offering was taken for the local church.

Introductions.—President Arthur Jackson, Paul Quinn College, Waco, Texas, donated \$5.00 to Samuel Huston College; Rev. H. G. Kirkpatrick, Central West Conference; Rev. R. T. Cunningham, pastor C. M. E. Church, Waco.

Announcements and benediction.—Announcements were made, the benediction was pronounced by L. A. Thigpen of the Texas Conference.

A. P. SHAW, President

W. W. BAKER, Secretary.

SECOND DAY—MORNING SESSION

The West Texas Conference convened in St. James church at 9 a. m., Bishop Shaw presiding. The conference sang jubilantly, "Come Thou Almighty King."

Devotions.—The bishop read from the second chapter of Acts and delivered the devotional address stressing unity and activity.

Journal.—The journal of the first day afternoon and evening were read and adopted.

Laymen Retire.—The vice president of the Laymen, A. C. Wilson, announced that the Laymen would meet in the basement of the church. The bishop allowed a few minutes for the laymen to retire from the room as the conference sang, "We are the Sons of God."

District Superintendents' and Pastors' Reports Continued.—H. A. Jones, district superintendent of the Victoria District, was passed in character and made his report. The effective elders of the Victoria District were passed in character and the following made their reports: D. C. Carrol, J. J. Hardeman, W. W. Baker, M. C. Ellison, A. C. Holden, J. H. Bryant, J. H. Brown, J. H. Straight, A. G. Russell, and L. L. Strait.

J. Walt Moore, district superintendent of the Waco District, was passed in character and made his report. The effective elders were called and passed in character and the following made their reports: Esau Smith, J. H. Marshall, Ira B. Loud, P. H. Phillips, R. R. Bailey, H. Harrison, T. H. Foy, A. D. Holden, S. D. Mosely, W. J. Moore, A. M. Curington, S. A. Keese, Dee Tucker, H. Kuykendall, J. B. Eggleston, J. G. Brown, W. L. Shaw, L. E. Muse, and Zan W. Holmes.

Music.—Jones Chapel Church of Waco rendered beautiful music.

New District.—K. W. McMillan read a resolution (see resolutions) expressing the desire to have another district to be known as the San Angelo District. The following spoke in favor of a new district: M. L. Wyatt, J. W. V. Hutchinson, A. M. Mason, B. F. Lee and A. D. Jacques.

Against such action—J. H. Carruthers.

Uncommitted speeches: J. H. Childs and Tom Wyatt.

The resolution was adopted by conference vote.

Music.—Jones Chapel rendered another appropriate number.

A very beautiful solo was sung by a student of Samuel Huston College.

United Session.—Bishop Shaw invited A. C. Wilson to the rostrum and so ordered a united session of the Lay and Annual Conferences.

Dr. Grannum.—Bishop Shaw presented Dr. Stanley E. Grannum, president of Samuel Huston College. Dr. Grannum addressed the conference giving a very encouraging and enlightening report of the school on Capitol Hill. Among the many fine advancements of the college, he mentioned the steady decrease of the college debt made possible by liberal friends in the West and from contributions of the West Texas Conference.

S. H. C. Rally.—Immediately after the address Bishop Shaw started the annual conference rally for Samuel Huston. The reports are as follows:

Bishop A. P. Shaw	\$ 10.00
President Arthur Jackson	5.00
Austin District	152.05
Dallas District	50.25
San Antonio District	76.00
Victoria District	16.00
Waco District	44.00
Total	\$353.30

Introductions.—Dean J. P. Brawley, Clark University; Rev. L. C. Graves, A. M. E. Church, Waco; Rev. C. C. Davis, A. M. E. Church, Waco.

Announcements and Benediction.—Benediction pronounced by H. A. Jones.
BISHOP A. P. SHAW, President
W. W. BAKER, Secretary.

SECOND DAY—AFTERNOON SESSION

The united sessions of the Lay and Annual Conferences opened promptly at 2:30 p. m. Devotions were conducted by S. A. Keesee. T. H. Wyatt led the united session in prayer.

Fellowship Units.—Bishop Shaw asked: What quota of Fellow Units will the conference adopt for another year? On motion of K. W. McMillan 600 units were approved.

Special Radio Broadcast.—A special radio broadcast was heard on Christian Education and the place of the small Christian college.

Question One.—Who are the members of the Lay Conference present and who are its members?

Officers of Lay Conference: president, A. C. Wilson, Marlin, Texas; secretary, C. S. Williams, 908 E. Crockett St., San Antonio, Texas; treasurer, T. D. Marshall, 2806 Munger Avenue, Dallas, Texas.

Question 2: What persons holding money, etc., are bonded. Answer, none.

Introduction.—Dr. Charles O. Oaten was introduced and he spoke to the conference representing the Board of Pensions and Relief. He presented a check of \$60.00 from the Chartered Funds and stated such funds by order of the Board have been designated for emergencies. He gave to the conference plans of the Board of Pensions and Relief and invited further interviews by both personal contact and by correspondence. One very commendable plan was offered and he emphasized this plan and insisted we write the Board for details.

Introductions.—Dean J. P. Brawley of Clark University was introduced. He addressed the conference representing the Board of Education. In his noble efforts he made friends for Education. Dr. Arthur R. Howard, district superintendent of the Sumpter District, South Carolina Conference, and representative for the Board of Prohibition and Public Morals, was introduced.

He addressed the conference and called on the entire family of the West Texas Methodism to stand by the Board of Temperance in the fight to build Christian character and to bring into being a more healthy sentiment for a sane society. We pledged our support and voted to observe the fifth Sunday in November all over our conference for Temperance Sunday.

A. C. Wilson, president of the Laymen's Association spoke and called attention to the fact that the laymen must be given larger considerations and share in the responsibilities of the church. He stated that the members back him in such demands.

Introductions.—Rev. Karl Downs spoke for the Board of Foreign Missions. It was a vital message delivered by one of our choice sons.

Announcements. Benediction by Karl Downs.

BISHOP A. P. SHAW, Chairman
W. W. BAKER, Secretary.

THIRD DAY MORNING SESSION

Meeting opened at 9 a. m. Rev. G. A. Deslandes led in devotions. Prayers by G. A. Deslandes and A. C. Wilson. Bishop Shaw continued the devotions by reading from Acts 3:1-11. Morning message was given from Acts 3:10; theme, "Let there Continue Wonders in the Church." It was truly a great message. Song, "I Am Feasting," etc. Song by the conference as our Laymen were passing to their own quarters for meeting.

Minutes for the previous day's sessions, morning and afternoon, were read and adopted.

Question 21 was asked, and the bishop announced the transfer of Rev. W. L. Shaw from the Texas Conference.

Questions 22 and 23 were asked and answered, none.

Question 24: Who have been received on trial (a) and placed in the studies of the first year? On motion of K. W. McMillan, report of the Conference Board of Examiners, and recommendation of the district superintendents involved, the following were received on trial and placed in the studies of the first year: A. L. S. Hansbury, Joseph H. Pierce, Charlemagne Payne, Phillip Williams and Saul White. They were each received by the conference.

Question 25: Who have been continued on trial? (a) None. (b) In studies of second year? A. M. Cuerington was passed in character and promoted to the second year course of studies. John H. Jackson and Elmo C. Tatum, both in Gammon, were passed in character and advanced to the second year course of studies. (c) In studies of third year? James D. Foy, Gammon, was passed in character and placed in studies of the third year.

Question 26: None.

Question 27: Who has been admitted into full membership? (a) None. (b) Elected and ordained deacons previously? On motion of K. W. McMillan for Board of Examiners and recommendation of the district superintendent involved, James L. Jones was received into full membership. (c) Elected to be ordained elsewhere? On motion of K. W. McMillan and recommendation of the district superintendents involved, characters of Elmo C. Tatum and Joseph A. Pierce were passed. They were elected to be ordained elsewhere.

Question 28: What members are in studies of this year? (a) Admitted into full membership this year? On motion of K. W. McMillan for Board of Examiners and recommendation of district superintendents, James L. Jones and Irven N. King were passed in character and admitted into full membership. (b) Admitted into full membership previously? Earl L. Spencer was on proper recommendation of Board of Examiners and recommendation of

district superintendent, passed in character and continued in studies of third year.

Question 29. None.

Question 30: What members have completed the conference course of studies? (a) Elected and ordained elders this year? On motion of president of the Board of Examiners, K. W. McMillan, and on recommendations of the district superintendents involved, the following were passed in character and elected to elder's orders, completed the course of study also: Karl E. Downs, Isaac C. Greer, Ira B. Loud, Charles L. Warren, Lacey W. Miles. (b) None. (c) Elected and ordained elders under Seminary Rule? Karl Downs, Charles Warren.

Treasurer C. E. Whitiker read from his reports the amount of cash received at this conference. See reports.

Introductions.—Dr. M. L. Vaughters, representative of American Bible Society, was introduced. He addressed the conference, made a plea for the Bible Society and asked for a wider use of Bible reading and patronage.

Further Introductions.—W. T. Handy, pastor Mt. Zion M. E. Church, New Orleans, La., representing the Commission on Evangelism, M. E. Church. He addressed the conference. Miss V. M. Sanders of Eliza Dee Home made brief remarks. A. J. Newton, superintendent of Marshall District; C. H. Pierson, Bryant, Texas Conference; Dr. Arthur P. Howard gave a parting word.

On motion of T. H. Wyatt the conference voted to observe the fifth Sunday in November for Temperance Sunday.

Resolutions.—Rev. A. M. Mason offered a resolution in which \$1.00 per year was asked per minister to create a fund for emergencies arising during the year. C. E. Whitiker offered a similar resolution with a \$1.00 annual payment clause and at the time of death of a member of the society. Discussion followed by A. M. Mason, K. W. McMillan, T. M. Bruton, J. H. Childs, Mrs. Lola Gray, C. E. Whitiker, J. Walt Moore, and Mrs. D. N. Swann.

Previous motion was called and on motion the substitute resolution was adopted. See Resolutions.

On motion of C. E. Whitiker and L. L. Haynes an organization was to be perfected this afternoon.

On motion of C. E. Whitiker conference voted to have the chairman appoint a committee to meet with the Ministers Wives Association. It was carried and C. E. Whitiker, A. M. Mason, and K. W. McMillan were appointed.

Standing committees were approved. Announcements. Benediction by W. T. Handy.

A. P. SHAW, President
W. W. BAKER, Secretary.

THIRD DAY AFTERNOON SESSION

Meeting opened at 2:30. Men came in a bit tardy. Devotions by J. G. Brown. Prayer by W. B. Lott, Bishop Shaw in chair.

Matters completed in regards to the standing committees and they were approved as stated previously.

Question 24, continued: The name of Saul White having been deferred previously was now received on trial, references having been given.

Questions 31 and 32. None.

Question 33: Who have been left without appointment to attend one of our schools? Charles Carrington, James D. Foy, John H. Jackson, Charlemagne Payne, Joseph A. Pierce, Elmo C. Tatum.

Question 34: Was the character of each pastor examined? This was strictly done in open session of the conference.

Question 35: Who are accepted as supply pastors: R. W. Baker, O. R. Brewer, P. E. Donnel, J. N. North, W. M. Franklin, Belt Prince, Nathan Pinkard, T. W. Stevens, Richard Weaver.

Question 36: What accepted supply pastors now in charge are taking (I) The Conference course of study? (1) in the first year, Belt Prince; (2) in the second year, O. K. Brewster; (3) in third year, Jack Ceaser, J. N. North; (4) None. (II) The Local Preachers Course of Study? (1) None; (2) None; (3) None; (4) None. b. Was the character of each local preacher or supply pastor now in charge examined? This was strictly done in open session of the conference. c. Yes. (c) II. What local preachers have completed the studies prescribed? (1) For deacon's orders: O. K. Brewster, Erastus H. Carter, George Davis, Dales Hanesbury, A. B. Johnson, Mrs. Jaunita Long, Philip Williams. (2) For elder's orders, Saul White.

Question 37. None.

Question 38: Who have died? Calvin H. Hamilton, John W. Stones, Sr., and George Waters.

Question 39: Who have had their conference membership terminated? (a, b, c, d) None. (1) To join the ministry of another church? (e) Henry Tolerson, Independent M. E. Church. (2) None. (3) From the ministry and membership of the church? Zebra King, Presbyterian Church. (4) None.

Question 40: What other personal notation should be made? J. S. Medlock is continued in the retired relations.

Question 42: Who are the retired ministers? See list of Disciplinary Questions.

Question 43: Who have been granted leave of absence? On motion of K. W. McMillan, Frank L. Blair was granted a leave of absence.

Song by conference song leader, B. F. Lee.

Bishop announced a united session. Chairman of laymen came to platform.

Question 19: Where shall the next session of the annual conference be held? was asked. On invitation of K. W. McMillan, pastor for the membership of St. Andrews M. E. Church, Ft. Worth, the conference on motion of C. E. Whitiker accepted the invitation to Ft. Worth to hold its 1938 session at St. Andrews, Ft. Worth, Texas.

On motion of K. W. McMillan the conference gave a vote of thanks to the presiding bishop for his interest in the matter of Conference Claimants.

K. W. McMillan paid \$10.00 balance due from St. Andrews on Episcopal Funds.

Question 6 was asked and on motion of G. A. Deslandes \$3000 was offered as a goal for Samuel Huston College this year. The motion was substituted by another motion made by E. M. Cooper that the sum be raised to \$4000.00. The latter was carried.

Resolution.—Mrs. C. S. Williams read a resolution asking that laymen be given a major responsibility in the matters of Conference Claimants and Episcopal Funds collections in the future.

Mrs. C. S. Williams' resolution was adopted.

Organization.—Pastors' Relief organization was set up with the following officers: C. E. Whitiker, president; L. L. Haynes, secretary; J. L. Watley, assistant secretary; Mrs. D. N. Swann, treasurer. See Resolutions for full instructions as to this new organization.

Offering.—An offering for unfortunate members of our group. J. H. Childs took the offering; sum given was \$8.17.

Song. Announcements. Benediction by J. W. Warren.

BISHOP A. P. SHAW, Presiding
W. W. BAKER, Secretary.

FOURTH DAY MORNING SESSION

Meeting opened about 9:15 a. m. Devotions by J. B. Phoenix. Prayer by L. L. Haynes. Twenty-third Psalm read by leader of devotions. Bishop Shaw continued devotions by reading Acts 11:19-24 and spoke from the last verse; theme, "The Value of a Good Man." Rev. B. F. Lee led us in singing, "I AM Feasting on the Manna," etc.

Minutes of the previous day's sessions were read and adopted for both morning and afternoon.

L. L. Haynes asked that the circulation of the Dallas-Victoria Bulletin be discontinued as he felt it was in opposition to the rules of the church. On motion of T. B. Echols this matter was referred to the Committee on Periodicals, by vote of the conference.

Question 35 was continued here. References covering the findings of the body have been fully given. See Question 35.

Question 40: Answered previously.

Question 41: Who are the supernumerary ministers and for what number of consecutive years has each held this relation? On motion conference voted that H. C. Willis (one year), F. M. Hudspeth (one year) be placed on the supernumerary list.

Question 27 was finished. See Question 27.

On motion of J. H. R. Dudley it was carried that all men coming up for consideration shall be required to present their proper credentials to the Committee on Conference Relations.

Question 44: Who are the Triers of Appeals? See Disciplinary Questions.

Reports: Statistician made report. See Report. On motion of J. W. Warren the report was received.

General remarks took a bit of time here. Many brethren made remarks. Dean J. P. Brawley was introduced and gave us a parting word.

Dr. Willis J. King, president of Gammon Theological Seminary, was introduced. Song by Rev. B. F. Lee.

Youth Program.—The hour having arrived for the youth program the bishop called T. B. Echols to the front and they proceeded to render the following program.

Bishop A. P. Shaw presided. Song by conference. Remarks by the bishop. Address by Karl Downs. Address by Charles L. Warren. Brief Address by Dr. T. B. Echols.

Introductions.—Dr. J. N. Jenkins of New Hope Baptist Church, Waco; Rev. J. N. Jordan, Baptist Church, San Antonio.

Announcements. Benediction by E. W. Kelly.

A. P. SHAW, President

W. W. BAKER, Secretary.

FOURTH DAY AFTERNOON SESSION

Meeting opened at 3 p. m.

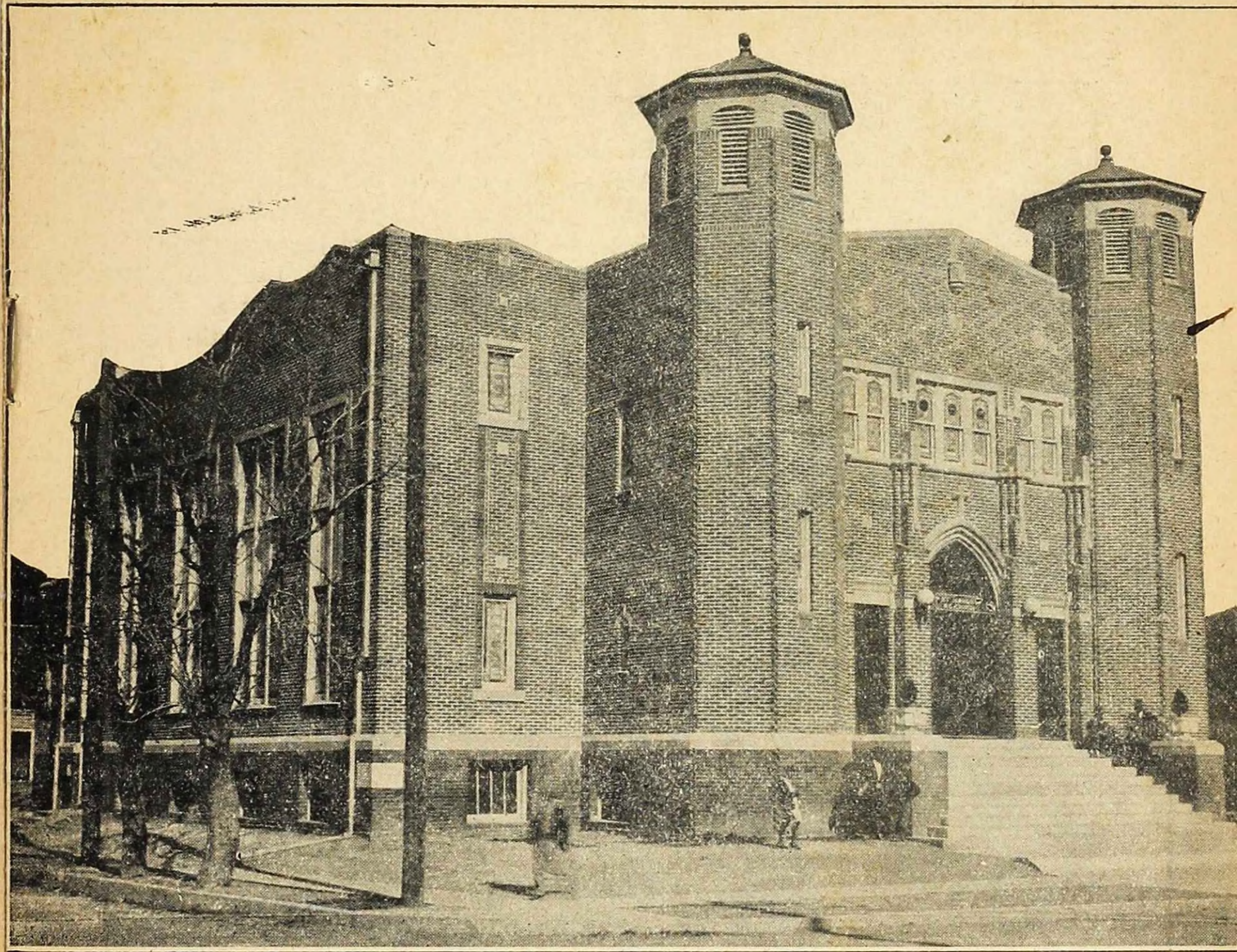
Devotion.—S. Harvey was in charge of devotions. R. R. Bailey led in prayer. Song.

Bishop in chair. Minutes of the morning session were read and adopted. Treasurer C. E. Whitiker made his report. See Report.

On motion of K. W. McMillan the conference voted to require the treasurer to present vouchers for the sums of money he handled at this conference to the conference next year. On motion the conference treasurer was ordered to pay all minute funds to the minute fund treasurer, J. W. Warren.

On motion of K. W. McMillan, J. W. Warren was reelected treasurer of the minute fund for another year.

Bro. James Shaw



PROGRAM OF THE SIXTY-THIRD SESSION

OF THE

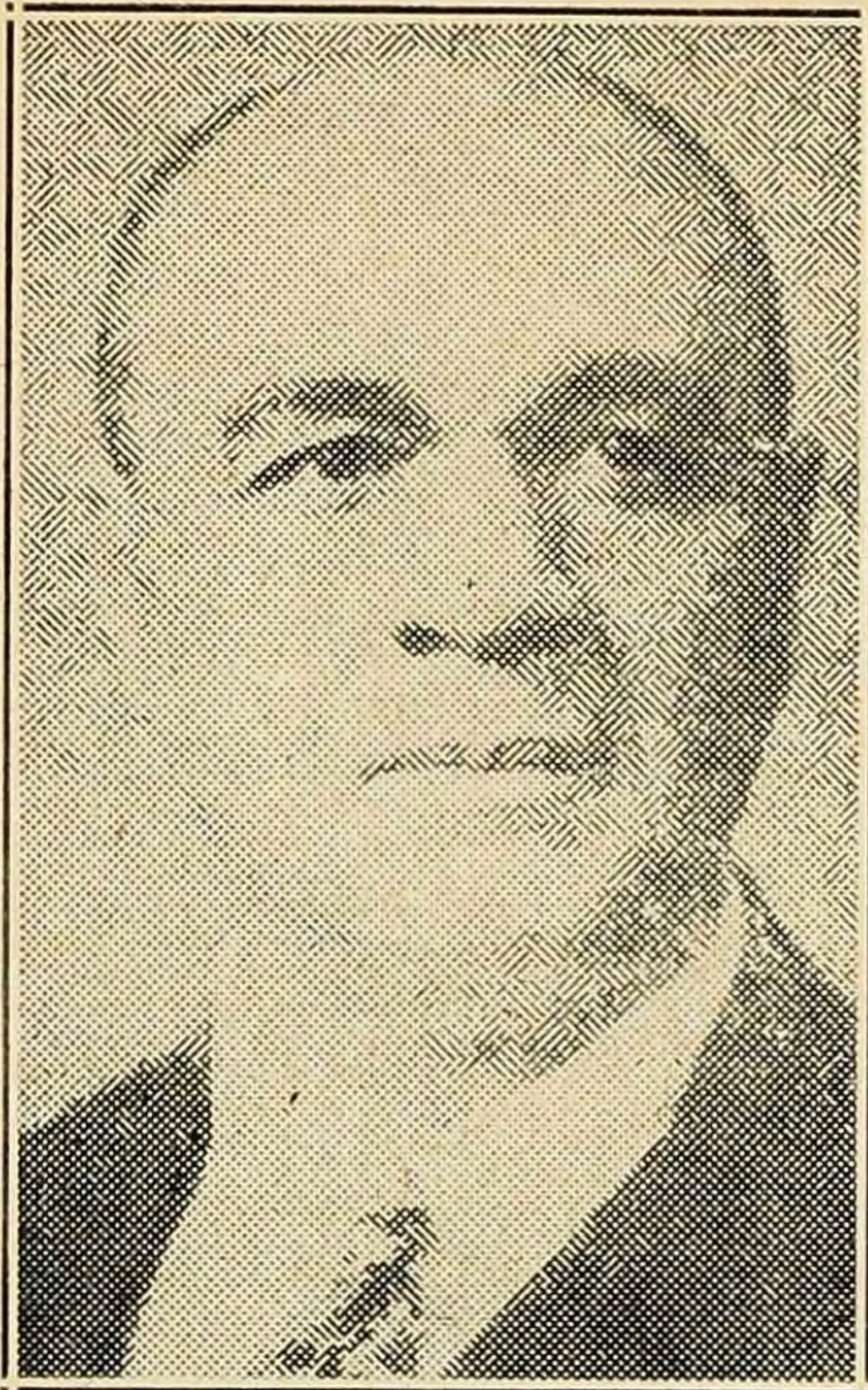
**WEST TEXAS
CONFERENCE**
METHODIST EPISCOPAL CHURCH

HELD AT

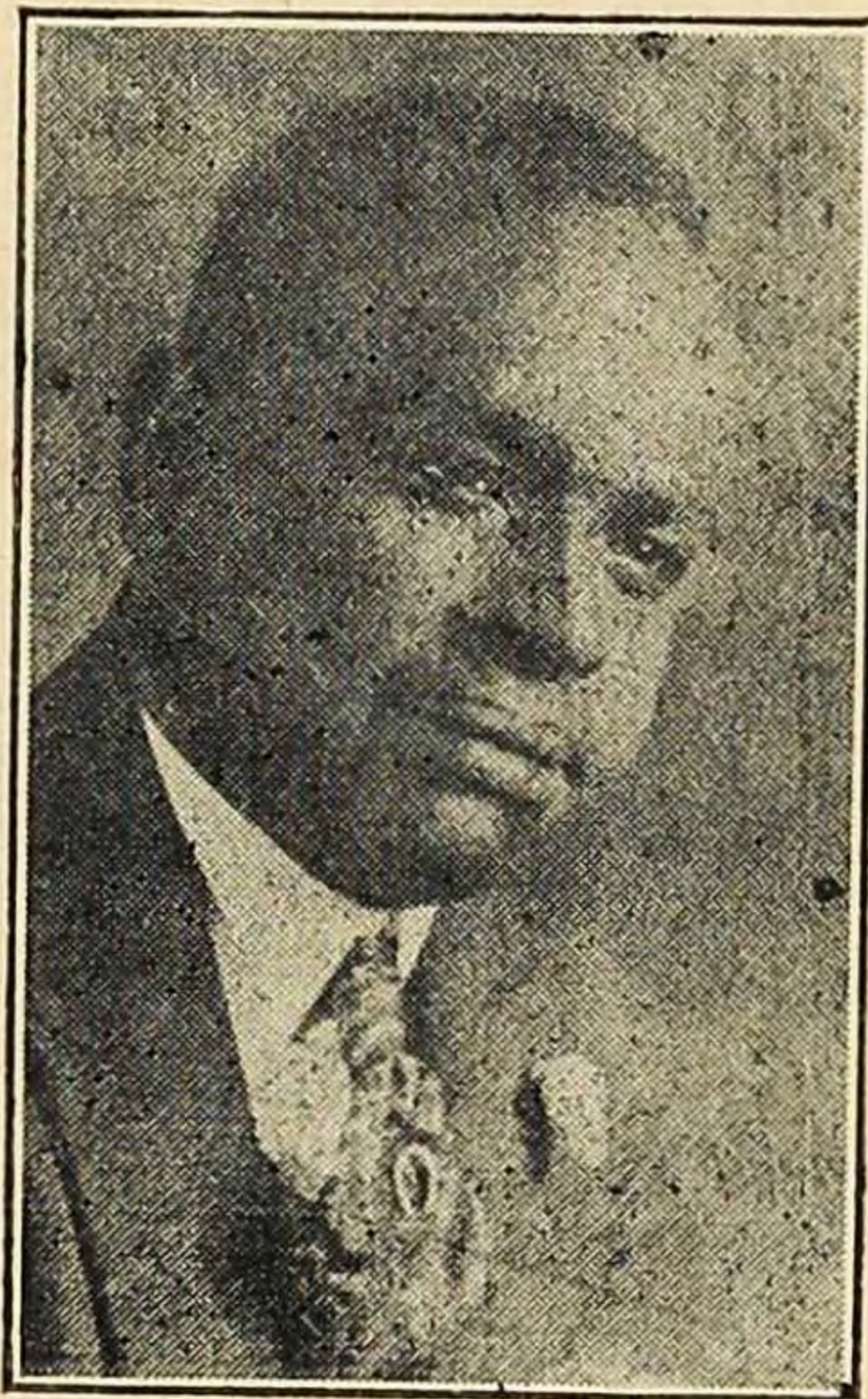
St. James Methodist Episcopal Church
WACO, TEXAS

OCTOBER 20-24, 1937

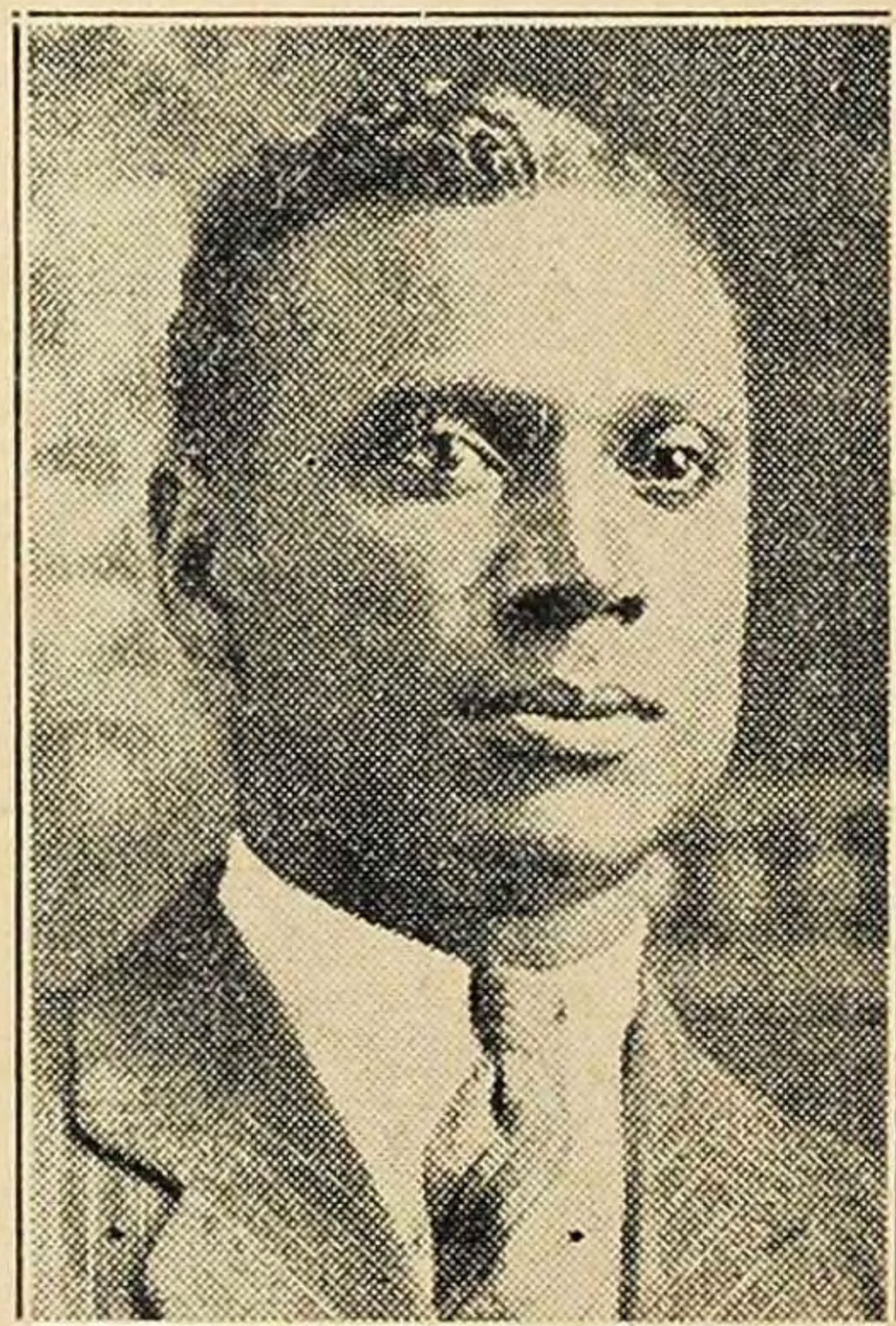
Bishop Alexander P. Shaw, D.D., LL.D., New Orleans, Louisiana	-----	President
Rev. J. Walt Moore, D.D., Waco, Texas	-----	Host District Superintendent
Rev. W. W. Baker, Edna, Texas	-----	Conference Secretary
Rev. Z. W. Holmes, A.B., B.D., Waco, Texas	-----	Host Pastor



BISHOP A. P. SHAW, D.D., LL.D
Resident bishop of the New Orleans Area—will preside at this annual conference. He comes to us with wide experience, having served 14 years at the great Wesley Chapel Church, Los Angeles, California and five years as editor of the Christian Advocate, Southwestern Edition. As bishop, in this first year of the Million Unit Fellowship movement and his first in the episcopacy, he has with apparent ease led the Area to fourth rank in increase over last year's giving.



REV. J. WALT MOORE, D.D.
District Superintendent of Waco District
Host District Superintendent, who is making good over the Waco District.



REV. Z. W. HOLMES, A.B., B.D.
Host pastor, who will have an increase in finance in all lines as well as more on the principal of the indebtedness of the church.

DAILY PROCEEDINGS

Tuesday, October 19

2:00 p. m.—The Board of Examiners will hold the examination of the undergraduates in the four years' course of study.

All pastors are to report to the Treasurer and Statistician.

7:30 p. m.—Welcome. (See local program.) Response, Bishop A. P. Shaw. Banquet in honor of Bishop A. P. Shaw, District Superintendents, Delegates, and Members. Admission 25c.

Wednesday Morning

8:45 a. m.—Devotional Address-----Bishop A. P. Shaw

Music-----St. James Choir

Communion Services.

Organization of the Conference.

Roll call.

11:00 a. m.—Memorial Service—Sermon-----Rev. S. N. Harvey

Announcements. Benediction.

1:00 p. m.—Dinner.

Wednesday Afternoon

2:30 p. m.—Worship-----Led by Rev. I. H. Pierce

Conference Session.

4:30 p. m.—Conference Claimants' Rally. Anniversary of Board of Pensions and Relief—Board Representative.

Wednesday Evening

7:30 p. m.—Worship-----Led by Rev. J. L. Wattley

Music-----Mt. Zion Choir

Sermon-----Rev. C. E. Whitiker

Offering. Benediction.

Thursday Morning

8:45 a. m.—Devotional Address-----Bishop A. P. Shaw

Conference Session.

10:30 a. m.—United Session.

Music -----Jones Chapel

Benediction.

1:00 p. m.—Dinner.

Thursday Afternoon

2:30 p. m.—Devotions-----In charge of Rev. S. A. Keesee

Conference Session.

4:00 p. m.—Anniversary Board of Foreign Missions.

Address by Representative of the Board.

Thursday Evening

7:30 p. m.—Worship-----Led by Rev. J. H. R. Dudley

Sermon-----Rev. E. W. Kelly

Music-----St. James (Waco)

Offering.

Address—Rev. W. Talbot Handy (Commission on Evangelism).

Friday Morning

8:45 a. m.—Devotions-----In charge of Rev. G. A. Deslandes

Devotional Address-----Bishop A. P. Shaw

Conference Session.

10:00 a. m.—Anniversary Board of Education and Samuel Huston College,
Bishop A. P. Shaw presiding.

Addresses-----Dr. M. J. Holmes and S. E. Grannum

Roll call for Samuel Huston College Rally.

Music-----Samuel Huston College

Benediction.

1:00 p. m.—Dinner.

Friday Afternoon

- 2:30 p. m.—Worship-----Led by Rev. J. G. Brown
Conference Session. Admission of class for full membership.
- 3:30 p. m.—Anniversary, Woman's Home Missionary Society (Mrs. S. A. Duncan, Conference President, and Mrs. D. N. Swann, Correspondent Secretary).

Friday Evening

- 7:30 p. m.—Samuel Huston College Night.
- Address-----President S. E. Grannum
- Music-----Samuel Huston College Choir

Saturday Morning

- 8:45 a. m.—Devotional Address-----Bishop A. P. Shaw
Conference Session.
- 10:45 a. m.—Anniversary, Board of Home Missions and Church Extension.
- Address-----Dr. W. A. C. Hughes, Philadelphia, Pa.
- 11:30 a. m.—Youth Day-----Dr. T. B. Echols, presiding
- Echoes from District Youth Council.
- Election of Officers.
- Remarks-----Bishop A. P. Shaw

Saturday Afternoon

- 2:30 p. m.—Devotions-----Rev. L. E. Muse
Conference Session.
- 4:00 p. m.—Address—Dr. Willis J. King, the President of Gammon Theological Seminary.
- Subject—The Christian Church in the Present World Situation (report on Oxford Conference).
- 6:00 p. m.—Banquet—Alumni and ex-students of Gammon Theological Seminary.
- Address-----Bishop A. P. Shaw
- Response-----Dr. Willis J. King
- 7:30 p. m.—Grand Musical Recital, Five Choirs, Mt. Zion, Jones Chapel, Bracks, Marlin, St. James, and many selected voices from the best choirs of the West Texas Conference. Also the Band of Moore High School will render a number of choice selections.
-

Sunday Morning

- 9:30 a. m.—Annual Church School, J. S. Henry in charge with all District Superintendents of Church Schools of the West Texas Conference assisting. A cash prize of \$2 will be given the district superintendent of the winning district.
- 10:30 a. m.—Annual Conference Love Feast, conducted by the retired ministers.
- 11:00 a. m.—Morning Services (See local program).
- Sermon-----Bishop A. P. Shaw
Music ----- St. James
Offering.
Benediction.
- 3:00 p. m.—Devotions-----C. E. Whitiker
Ordination Sermon-----Dr. Willis J. King
Ordination of Deacons and Elders-----Bishop A. P. Shaw
Music-----Wesley Chapel (Austin)
Offering.

Sunday Evening

- 7:30 p. m.—Worship-----Led by Dr. K. W. McMillan
Sermon-----L. L. Haynes
Music-----St. Paul, Dallas
Offering.
Reading of the Appointments-----Bishop A. P. Shaw
Benediction.

OBSERVE THESE RULES

All pastors, delegates and guests must register with the pastor and registrar with Two Dollars whatever day you may come, for room and board.

Bishop has secured Rev. E. W. Kelly to be our conference preacher.

St. James, the entertaining church, is located at 612 South 2nd Street.

COMPLIMENTS OF

DR. L. R. ADAMS

127½ Bridge Street

Used Tires and Tubes—Gasoline and Motor Oils—VULCANIZING

Our business has been built on a money back guarantee

Ask any of our customers

SMITH'S SERVICE STATION

410-414 SOUTH SECOND STREET

P. D. Q. COFFEE SHOP AND LUNCH ROOM

A Quiet Place to enjoy our famous home cooking. Prices Reasonable.

R. D. Dixon, Proprietor

203 FRANKLIN STREET

LINCOLN CORPORATION—is organized exclusively for colored people. We assist colored people financially for educational and other purposes. If in need of financial assistance or a loan, we can secure it for you.

LINCOLN CORPORATION—814 AMICABLE BUILDING

W. L. Hamilton, Vice President

Phone 9486

E. M. BRITT, CUSTOM TAILORING AND CLEANING

Phone 9640

203 Franklin Street



COMPLIMENTS OF

Coca-Cola

Licensed Lady Attendant

A Careful Ambulance Service

THE PRIDE OF WACO

THE KENNARD FUNERAL HOME

"With "a service that satisfies"

1015 SOUTH TENTH STREET

PHONE 1338

MECCA DRUG STORE

Compliments to the local church and

Welcome all Visitors to our Drug Store

127 Bridge Street

Phone 1646

Hot Sausage, Barbecued Pork, Beef, Mutton, Chilli, Cake, Pies

HOT COFFEE—WEINERS

Johnie Stephens, 309 Speight Street

KUYKENDALL'S BARGAIN STORE

Fu'll line of unclaimed suits as lows as \$1.95 to \$12.50, some cost as high as \$30

Cleaning and Pressing neatly done—Hats Cleaned and Blocked 50c

Ladies, come in and get your shoes repaired—an electric Shoe Shop—Wayman Hodge in charge. Shoe Shines, Socks, Ties, Shirts, Children's Shoes, Underwear, ladies' Shoes, Men's Dress and Work Pants, extra coats of all descriptions. **Phone 9580. 115 Bridge**

BECOME A MEMBER OF THE FAMILY CIRCLE ASSOCIATION

(A Voluntary Association)

111 BRIDGE ST., WACO, TEXAS

PHONE 2662

W. L. Dennis, President

Mrs. Mary Washington, In charge of Office

T. S. SIMMONS' BARBER SHOP

First Class Service

119 BRIDGE STREET

EAT AT IRENE'S PLACE—

THE HOME OF GOOD FOOD

119 BRIDGE STREET

THE AMERICAN WOODMEN—Usually referred to as "about the only reliable, strong and growing order," is to launch a Streamline Membership Campaign for 300 new members. First kickoff Oct. 13. Drive closes Dec. 17.

B. W. Goodwin, Jr., Campaign Director

J. H. Clay, Assistant Director

JOCKEY CLUB BARBER SHOP

FIRST CLASS SERVICE

131 South 2nd Street

J. C. Sachell, Prop.

Committee Reports.—The Auditing Committee's report was read by J. H. Childs and on his motion it was adopted. See Report.

On motion of H. A. Jones the conference voted that all monies for minutes be turned over to the treasurer of the Publishing Board.

Resolutions.—L. L. Haynes was recognized and presented a plan adopted by the Area Council in its last session as follows:

Whereas in these days of retrenchment we are faced with the fact that if we are to relieve ourselves of the embarrassments that constantly face us such as: very inadequate salaries of our ministers, the serious depreciation of our property, the constant calls for aid incurred by illness and death, and the challenge that comes to us for the expansion and strengthening of our Methodism within our conference, and

Whereas the Area Council of the New Orleans Area in its last session at Gulfside, Mississippi, upon the recommendation of Bishop A. P. Shaw, adopted a resolution to provide for the above needs, the plan being as follows: that in every conference a fund would be created to be known as a sustentation fund, accumulated by collecting five cents from every member in the various charges. Every conference custodian of its own fund; formulating plans to raise it and to administer it.

Be it resolved therefore: that the West Texas Conference now in session go on record as endorsing the action of the Area Council and immediately set plans for carrying out the above plan and to set up an organization to administer the same.

Respectfully submitted,

L. L. Haynes
C. E. Whitiker
T. B. Echols.

And on motion of L. L. Haynes it was adopted.

Question 16 called and referred to the Committee or Board of Stewards for further adjustments.

Bishop called for the class for admission on trial: James L. Jones and Ervin N. King. The bishop spoke to them on the greatness and sacredness of their task and also congratulated them upon their being accepted into this great brotherhood of ministers.

Committee on Evangelism.—Report of the Committee on Evangelism was made by Rev. R. A. Appling and on his motion it was adopted. See report.

Report of Committee on Prohibition and Public Morals was read by R. A. Appling and on his motion it was adopted. See report.

Introduction.—Rev. E. W. Kelly, pastor of Scott's Memorial M. E. Church, Detroit, Mich., was introduced and he addressed the conference.

Question 41: Who are the supernumerary ministers, etc. The conference voted on the recommendation of the Committee on Conference Relations to give Revs. F. M. Hudspeth and H. C. Willis the supernumerary relation.

Question 36 was asked. See Disciplinary Questions.

Board of Stewards made their report and on motion of C. E. Whitiker the report was adopted.

Question 11 was asked: What amounts have been apportioned to the pastoral charges within the conference for conference claimants? Five per cent of pastor's cash salary.

Question 12: What are the items and aggregate of annual conference benevolences approved by this body for the ensuing year?

On motion of L. L. Haynes for the Committee on Education \$4000.00 was approved as a goal for Samuel Huston College. The same to be raised under three special drives as follows: at annual conference, Lincoln Day in February, and at the summer institutes.

On motion of J. W. Warren that the communion offering be given to Rev. J. N. Hooey the same was amended by J. Willis to give half to Mrs. C. H. Hamilton, it was carried.

F. M. S. committee read a resolution and on motion of Mrs. C. S. Williams, the reader, it was adopted. See Resolution.

C. E. Whitiker offered a resolution of courtesy to the bishop and also requested the Board of Bishops to grant him the privilege to hold next year's session of our conference. It was adopted. See Resolution.

Report of the Committee on Deaconess Board was read by Mrs. D. N. Swann and on her motion it was adopted. See Resolution.

Committees on remaining items were by vote of the conference ordered passed in except the Committee on Periodicals. See report on Periodicals and other committees.

Dr. Willis J. King, president of Gammon Seminary, Atlanta, Ga., was presented and spoke, telling of his visit and work of the Conference on Life and Work in Oxford, England.

He gave forth facts, impressions, and inspirations for every Christian worker to think over.

Announcements. Benediction by Dr. W. J. King.

A. P. SHAW, Chairman

W. W. BAKER, Secretary.

FIFTH DAY MORNING SESSION

Sunday Morning.—Church school conducted by Prof. J. S. Henry assisted by representatives from each district. Dallas district won the prize.

Love Feast.—This service was very impressively conducted by the pastors of the retired relation, T. S. Moore, G. M. Mallory, and I. T. Sanford. C. E. Whitiker was handy in assisting in the procedure.

Crowds came from all sections of the conference territory it seemed.

The morning devotions were led by Rev. J. Walt Moore, superintendent of the Waco district. St. James M. E. Church choir sang. Rev. J. B. Phoeix led the prayer. Rev. E. W. Kelly read the Old Testament lesson.

Pastor and Mrs. Zan Holmes' baby was baptized (James Weldon Holmes) by Bishop Shaw.

Rev. J. Walt Moore introduced in a few appropriate remarks Bishop A. P. Shaw who preached from the text, Mark 14:9; theme, "Master Christians."

Offering.—The offering received special attention as the church's debt situation was demanding. The bishop led this offering giving \$5.00. Dr. Dennis also gave \$5.00. Many gave \$1.00 each. Total offering \$93.00.

Jacob's Chapel's Glee Club sang to the delight of the conference.

Announcements. Benediction by Bishop A. P. Shaw.

A. P. SHAW, Chairman

W. W. BAKER, Secretary.

FIFTH DAY AFTERNOON SESSION

Ordination Services.—Devotions conducted by C. E. Whitiker. Music by Wesley Chapel choir, Austin, Texas.

Sermon by W. J. King, president Gammon, text, II Tim. 4:10; theme, "Seeing it Through." It was a message appropriate and convincing.

On suggestion of president of the conference and motion of J. W. Warren \$150.00 was set aside as a "Necessitous Fund" by vote of the Conference, from Conference Claimants.

Offering taken.

Ordination.—Bishop A. P. Shaw, assisted by the elders ordained as follows for deacons: O. K. Brewster, E. Erastus Carter, George Davis, Dale Hanesboro, Albert B. Johnson.

Song by Choir.—The choir rendered music especially fitting and beautifully rendered.

Ordination.—Bishop Shaw, assisted by the elders, save one (Rev. Warren stood by his son Charles), proceeded to ordain as elders the following: Karl Downs, Isaac C. Greer, Ira B. Loud, Larry W. Mills, Charles Warren, and Saul White.

Announcements. Benediction by W. J. King.

A. P. SHAW, President

W. W. BAKER, Secretary.

CERTIFICATE OF PRESIDENT AND SECRETARY

This is to certify that the foregoing is a complete and correct record of the proceedings of the Sixty-third Session of the West Texas Annual Conference of the Methodist Episcopal Church, held in St. James M. E. Church, Waco, Texas, October 20-24, 1937, and such has been adopted by the Conference as its official record.

Signed:

A. P. SHAW, President

W. W. Baker, Secretary.

FIFTH DAY NIGHT SERVICES

Sunday Night.—Devotions, C. E. Whitiker in charge. St. Paul M. E. Church choir, Dallas, furnished the music.

Rev. L. L. Haynes, pastor St. Paul, Dallas, preached from John 13:13; theme, "Jesus a Master." It was a great message.

Offering \$21.00.

The bishop and cabinet came in. The following items were considered.

Resolution.—Committee on Courtesies read report by Rev. J. H. R. Dudley who moved its adoption. It was carried with standing vote of ministers and laymen.

Committee on Religious Education by H. O. McCutcheon was read and on his motion it was adopted. See Resolution.

Report of Committee on Periodicals was read by J. G. Brown. It was adopted. See Resolution.

On motion and vote of the conference H. A. Jones was given \$100.00 for necessitous funds of conference claimants.

On motion of J. B. Phoenix, J. H. Hooley and Mrs. C. H. Hamilton were to receive the balance voted for necessitous funds. Adopted.

On motion of J. W. Warren the minutes were to be approved without being read. Carried.

The following resolutions were passed in: On Area Program, On Epworth Leagues, On Graduate Courses. See Resolutions.

On motion of K. W. McMillan the conference voted to pay the secretary and his staff \$15.00 to cover expenses of the secretary, statistician, and treasurer. It was carried.

Jacobs Chapel Glee Club sang, "Who Shall Wear the Crown?"

Bishop made remarks and sang "Beams of Heaven."

T. B. Echols moved that after the reading of the appointments the conference stand adjourned sine die.

Bishop A. P. Shaw read the appointments and gave the benediction.

A. P. SHAW, Chairman

W. W. BAKER, Secretary.

IV.—Disciplinary Questions

(a) United Session

1. Who are the members of the Lay Conference present, and who are its officers? (See Secretary's record for names of members.) President, A. C. Wilson, Marlin, Texas; secretary, Mrs. C. S. Williams, 908 East Crockett St., San Antonio; treasurer, T. D. Marshall, 2806 Munger Ave., Dallas.

2. Is this Annual Conference incorporated according to the requirements of the Discipline? Yes.

3. What officers and persons holding moneys, funds, etc., are bonded, and in what amounts, according to the requirements of the Discipline? No, but the case is under advisement.

4. What are the statistical and financial reports for the year?

(a) From the statistician. See Statistical Report.

(b) From the treasurer. See Treasurer's Report.

(c) Other items. See Conference Board of Stewards' Report and Treasurer's Report of Home Missions.

5. What are the items and aggregate of General Conference Benevolences apportioned to this conference? World Service, 600 units; Episcopal Fund, \$864.00.

6. What reports and exhibits are presented by conference boards and institutions? \$4000 for Samuel Huston College to be raised this year (a) At conference, (b) Lincoln Day, (c) and at institute.

7. What is the annual report of the Conference Board of Home Missions and Church Extension? See Report.

8. What is the annual report of the Conference Board of Foreign Missions? See Report.

9. What are the claims on the conference funds? For Annuity distribution 1052 years, multiplied by Disciplinary rate of \$1.25 per year, \$315.00.

10. What has been received on these claims? Balance, \$11.25; On interest, \$12.75; from the Chartered Fund, \$60.00; From Board of Pensions and Relief, \$665.00; From Annual Conference investments, \$110.44; from pastoral charges, \$638.00.

11. What amount has been apportioned to the pastoral charges within the conference to be raised for the support of conference claimants? Five per cent of the pastors' cash salaries.

12. What are the items and aggregate of Annual Conference benevolences approved by this body for the ensuing year? Rally for Samuel Huston College of \$4000.00.

13. What approved financial campaigns are to be carried on in this conference during the ensuing year, and for what amounts? None.

14. What is the schedule of Minimum Support? Committee appointed to work out a plan.

15. What are the approved claims for the support of district superintendents, bishops, and conference claimants for the ensuing year? District superintendents, \$1100.00; bishops, \$864.00; conference claimants, \$1728.00.

16. What shall be the evangelistic and religious educational plan for the ensuing year? By revivals and institutes, also vacation Bible schools.

17. What standing committees shall be appointed by this body? See list of standing committees.

18. What other items of business shall be considered by this United Session? None.

19. Where shall the next session of the conference be held? St. Andrew's, Fort Worth, Texas.

(b) Annual Conference Session

20. Who have had their credentials restored without readmission to the conference? None.

21. Who have been received by transfer, and from what conferences? W. L. Shaw.

22. Who have been readmitted? None.

23. Who have been received on credentials, and from what churches? None.
24. Who have been received on trial? In studies of first year: Dale H. Hansboro, Joseph H. Pierce, Charlemagne Payne, Phillip Williams, Saul White.
25. Who have been continued on trial? (a) In studies of first year, none. (b) In studies of second year: A. M. Cuerington, Benjamin F. Steward, John H. Jackson, Gammon; Elmo C. Tatum, Gammon. (c) In studies of third year, James D. Foy. (d) In studies of fourth year, none.
26. Who have been discontinued? None.
27. Who have been admitted into full membership? Elected and ordained deacons previously, James L. Jones, Irvin N. King.
28. What members are in studies of third year? (a) Admitted into full membership this year: James L. Jones, Irven N. King. (b) Admitted into full membership previously, Earl L. Spencer.
29. What members are in studies of fourth year? None.
30. What members have completed the conference course of study? (a) Elected and ordained elders this year: Karl E. Downs, Isaac C. Greer, Ira B. Loud, Larry W. Miles, Charles Warren. (b) Elected and ordained elders previously, none. (c) Elected and ordained elders under the Seminary Rule: Karl E. Downs, Charles L. Warren. (d) Elected to be ordained elsewhere, none.
31. What others have been elected and ordained deacons? Elected by this conference and ordained elsewhere: J. H. Jackson, Charlemagne Payne, J. A. Pierce, Elmo Tatum.
32. What others have been elected and ordained elders? None.
33. Who have been left without appointment to attend one of our schools? Charles Carrington, James D. Foy, John H. Jackson, Charlemagne Payne, Joseph H. Pierce, Elmo Tatum.
34. Was the character of each preacher examined? This was strictly done in open session of the conference.
35. Who are accepted as supply pastors? R. W. Baker, O. K. Brewster, P. E. Donnel, W. M. Franklin, J. N. North, Nathan Pinkard, Belt Prince, T. W. Stevens, Richard Weaver.
36. What accepted supply pastors now in charge are taking (I) The (conference course of study (1) In the first year, Belt Prince. (2) In the second year, O. K. Brewster. (3) In the third year, Jack Ceaser, J. N. North. II. What local preachers have completed satisfactorily the studies prescribed? (1) For deacon's orders: O. K. Brewster, Erastus H. Carter, George Davis, Dale H. Hansboro, A. B. Johnson, Mrs. Jaunita Long, Philip Williams. (2) For elder's orders, Saul White.
37. Who have been transferred, and to what conferences? None.
38. Who have died? Calvin H. Hamilton, John W. Stone, George Waters.
39. Who have had their conference membership terminated? To join the ministry of another church, Henry Tollerson, Independent Methodist Church. From the ministry and membership of the church: Zebra King, Presbyterian Church; Bertha Bateman.
40. What other personal notations should be made? J. S. Medlock was continued on the retired list.
41. Who are the supernumerary ministers, and for what number of years consecutively has each held this relation? H. C. Willis, 1 year; F. M. Huds-peth, 1 year.
42. Who are the retired ministers? E. T. Allen, case held up for a hearing; J. T. Carper, James Coe, J. W. Downs, R. H. Duncans, Mumford Fountain, E. C. Henderson, G. M. Mallory, J. S. Medlock, T. G. Moore, L. H. Richardson, I. T. Sanford, N. W. Stevens, W. M. White.
43. Who have been granted leave of absence? Frank L. Blair, for rest and to build up health.
44. Who are the Triers of Appeals? G. A. Deslandes, Zan W. Holmes, L. L. Haynes, T. H. Wyatt, K. W. McMillan; reserves, H. O. McCutcheon, J. H. R. Dudley.

45. What institutions and organizations are approved by three-quarters vote of the conference for appointment of ministers in the effective relation with annuity claim. None.

46. Where are the preachers stationed? See list of appointments.

V.—Appointments

1937-1938

All the appointments are in Texas unless otherwise stated.
Figure at the end of the line denotes year of service.

AUSTIN DISTRICT

J. W. Warren, Superintendent, 1022 Pecan Street, Waco, Texas (5)
AUSTIN:

Austin Circuit, 1310 Rosedale Ave.....	R. W. Baker	(3)
Simpson Memorial, 1703 E. 12th St.....	R. W. Allen	(4)
Wesley Church, 1207 Hackberry St.....	C. E. Whitaker	(7)
Belton-Kellsbranch, Belton.....	J. F. Muse	(1)
Belmont Circuit, R. F. D. 1, Box 41, Luling.....	W. M. Mosley	(1)
Cedar Creek Circuit, 1167 Curve St., Austin.....	D. F. Vance	(5)
Fayetteville-Industry, Fayetteville.....	R. A. Appling	(2)
Gonzales-Elm, Gonzales.....	M. L. Wyatt	(4)
Gonzales Circuit, R. F. R. 1, Box 69, Gonzales.....	J. W. Maye	(1)
Georgetown-Hutto-Liberty Hill, 613 West St., Georgetown.....	J. S. Jordan	(1)
Luling-Union Hill-Zion, Luling.....	S. N. Harvey	(3)
Llano-Mason-Fredericksburg, Box 109, Llano.....	George W. Kelley	(4)
Lockhart-Bright's-San Marcos, Lockhart.....	F. J. Hutchison	(1)
LaGrange-Ellinger-Peach Grove, Box 492, LaGrange.....	A. D. Jacques	(2)
Smithville-Salem-West Point, 1704 Pennsylvania Ave., Austin.....	B. F. Stewart	(2)
Temple-Bartlett Circuit, 303 S. 12th St., Temple.....	T. M. Bruton	(3)
Winchester-Giddings-Leo, Winchester.....	(Sup.) M. A. Freeman	(1)

Special Appointments:

Miss V. M. Souders, Superintendent Eliza Dee Home, Austin
Miss Agnes Littles, Superintendent Saeger Brown Home, Baldwin, La.

DALLAS DISTRICT

F. D. Young, Superintendent, 1215 E. Pulaski St., Ft. Worth, Texas (3)
Corsicana, 1205 E. 10th Ave..... E. L. Spencer (1)
Denison, 619 Fannin Ave..... W. B. Lott (1)

DALLAS:

St. Paul Mission, 1814 Good St.....	D. H. Hansboro	(1)
St. Paul, 1814 Good St.....	L. L. Haynes	(6)
Trinity, R. F. D. 7, Box 120.....	J. H. Childs	(4)
Warren, 3616 Latimer St.....	Charles L. Warren	(1)
Wesley, 2711 Thomas Ave.....	James L. Jones	(2)
Mt. Zion, R. F. D. 7, Box 115.....	P. E. Donnell	(1)
Ennis-Waxahachie, 104 Wyatt St., Waxahachie.....	I. C. Greer	(2)
Ferris-Lancaster, 3621 Latimer St., Dallas.....	G. V. Cavett	(1)

FT. WORTH:

Cowan, R. F. D. 4, Box 684-A.....	J. W. V. Hutchinson	(1)
Cogswell, R. F. D. 5, Box 258-C.....	Richard Weaver	(4)
St. Andrews, 1061 Rosedale Ave.....	K. W. McMillan	(3)
Thompson, 3804 Prospect Ave.....	D. B. Baker	(5)
Groesbeck-Kosse, Box 6, Groesbeck.....	M. B. Burkley	(1)
Hubbard-Dawson, 1319 South 2d St., Waco.....	J. W. Morgan	(1)
Mexia: Jones, 410 S. Denton St.....	B. A. Byars	(1)

Mexia Circuit, R. F. D. 5, Box 147-----	S. G. Grahm	(2)
Milford-Italy, Milford-----	E. N. King	(2)
Pelham Circuit, R. F. D. 3, Box 92, Hubbard-----	I. H. Pierce	(1)
Pilot Point, 2712 St. Louis St., Dallas-----	Nathan Pinkard	(1)

SAN ANGELO DISTRICT

T. H. Foy, Superintendent, Valley Mills, Texas (1)		
Abilene, 629 N. 6th St.-----	T. J. D. Simms	(2)
Ballenger—To be supplied		
Broomfield—To be supplied		
Brownwood-Brady, 904 Beaver St., Brownwood-----	J. N. Hooey	(4)
El Paso, 2023 Myrtle St.-----	W. A. Robinson	(1)
Lampassas-San Saba, Lampassas-----	P. H. Phillips	(1)
Littlefield—To be supplied		
Odessa, Odessa-----	J. D. Mackey	(1)
San Angelo, 226 W. 6th St.-----	J. H. Caruthers	(3)
Wichita Falls, 802 Food St.-----	B. F. Lee	(3)

SAN ANTONIO DISTRICT

J. B. Phoenix, Superintendent, 220 Maryland St., San Antonio, Texas (3)		
Beeville Circuit, Beeville-----	M. J. Majors	(2)
Corpus Christi, 1109 Ramirez St.-----	R. L. Palmer	(3)
Cuero, Cuero-----	C. W. Franklin	(3)
Edes—To be supplied		
Floresville—		
Hondo-Uvalde, Hondo-----	Sol White	(1)
Kerrville, Kerrville-----	Obie Coe	(2)
Kingsville Parish, Kingsville-----	M. W. Stevens	(2)
Nixon Circuit, Seguin-----	W. M. Ellison, Jr.	(5)
Pearsal-Pleasanton, Pleasanton-----	A. M. Mason	(2)
SAN ANTONIO:		
East St. Paul, 211 Lockhart St.-----	T. H. Wyatt	(2)
Jacob's Chapel, 408 S. Polaris St.-----	W. M. Ellison	(6)
Jones Chapel, 117 Olmos Drive-----	H. O. McCutchison	(1)
Lincoln Heights, San Antonio-----	G. F. Alexander	(2)
St. Paul, 130 N. Mesquite St.-----	G. A. Deslandes	(5)
Sanford's Chapel, 1126 San Fernando St.-----	(Sup.) Clyde Strait	(1)
San Antonio Heights—To be supplied		
Seguin-Almos, Seguin-----	J. A. Wills	(1)

VICTORIA DISTRICT

W. W. Baker, Superintendent, 604 S. Depot St., Victoria, Texas (1)		
Alleyton-Eagle Lake, 308 S. Depot St., Victoria-----	T. Snow	(1)
Altair Circuit, Hallettsville-----	(Sup.) T. W. Stevens	(1)
Bloomington, R. F. D. 1, Box 146, Victoria-----	Belt Prince	(1)
Cologne-Mission Valley, Fannin-----	A. C. Holden	(5)
Columbus: St. Paul, Columbus-----	J. J. Hardeman	(2)
Edna-Morales, Edna-----	M. C. Ellison	(1)
Garwood Circuit, Schulenburg-----	D. C. Carroll	(1)
Goliad, Goliad-----	L. L. Strait	(2)
Hallettsville-Bresleau, Hallettsville-----	S. D. Mosley	(1)
Oakland-Brown's Chapel, Oakland-----	J. L. Watley	(1)
Schulenburg-Flatonia, Schulenburg-----	J. H. Bryant	(5)
Sublime Circuit, R. F. D., Victoria-----	(Sup.) O. K. Brewster	(2)
Victoria, 605 S. Wheeler St.-----	A. G. Russell	(3)
Wharton-El Campo, Wharton-----	J. H. Strait	(5)
Weimar, Victoria-----	(Sup.) W. M. Franklin	(1)
Yoakum Circuit, Yoakum-----	H. A. Jones	(1)
Port Lavaca, Victoria-----	(Sup.) Philip Williams	(1)

WACO DISTRICT

J. Walt Moore, Superintendent, Waco, Texas (2)

Aquilla-Hillsboro, Waco	Henry Harrison	(1)
Bowman-Regan, R. F. D. 3, Marlin	Esau Smith	(5)
Bremond-Longbranch, Bremond	J. H. Brown	(1)
Calvert, Calvert	I. B. Loud	(3)
Chilton-Mooreville, Chilton	R. R. Bailey	(1)
Moody-Gatesville, Moody	J. H. Marshall	(1)
Mart-Springhill, Mart	A. D. Holden	(5)
Marlin, Marlin	J. H. R. Dudley	(1)
Milam Grove-Pt. Sullivan, R. F. D. 1, Maysfield	N. J. Moore	(3)
Rosebud-Lott, R. F. D. 1, Maysfield	A. M. Cuerington	(3)
Rocky-Cedar, R. F. D. 5, Mexia	S. A. Keesee	(6)
Springfield-Frosa, R. F. D. 5, Mexia	Dee Tucker	(5)
Satin-Majors, 1111 Payne St., Waco	H. E. Kuykendall	(6)
Valley Mills, Valley Mills	J. B. Eggleston	(5)
WACO:		
Bracks, Waco	W. F. Shaw	(2)
Jones Chapel, 908 Clifton St.	J. G. Brown	(2)
Mt. Zion, 605 Marlborough	L. E. Muse	(6)
St. James, 612 S. 2d St.	Z. W. Holmes	(3)

SPECIAL APPOINTMENTS

- T. B. Echols, Director of Religious Education New Orleans Area, 1906 Tillotson Avenue, Austin Texas
 S. E. Grannum, President Samuel Huston College, Austin, Texas
 Karl Downs, Field Cultivation, Board of Foreign Missions,

VI.—Reports**ON AREA PROGRAM**

We, the members of the West Texas Conference, wish to express our appreciation to the New Orleans Area and the Board of Education for the organization of the Area Division of Religious Education and Young People's Work.

Let each district strengthen its Youth Council.

Let each district during the summer of 1938 conduct a district institute for its young life. Let us urge our young people, Sunday School teachers, and youth leaders, to attend the Area Institute at Gulfside for special training during the month of July, 1938.

We pledge our moral and financial support to Director T. B. Echols in his program of field cultivation.

A. D. JACQUES
 CHARLES WARREN
 WILLIAM ELLISON, JR.

EPWORTH LEAGUE

Whereas the Epworth League is an important auxiliary in our church life, a center for the development of the religious life of our young people; Whereas, through the years the Epworth League has been one of the chief agencies for the training of leadership for the church;

Be it resolved that we, the members of the West Texas Conference pledge our loyal support to the organization and reorganization of chapters in our local churches. Let us seek to strengthen the district youth organizations throughout our conference.

One of the Youth delegates from our conference to the National Council of Methodist Youth was elected as a member of the executive committee of

the National Council. Let us give our youth leaders encouragement in their effort to recruit young people for membership and leadership in the church.

Signed:

T. B. ECHOLS
J. L. WATTLEY
WALTER ROBINSON.

REPORT OF COMMITTEE ON CONFERENCE RELATIONS

October, 1937

1. On motion J. A. Pierce, Dale H. Hansboro, Philip Williams, Charlemagne Payne, and Saul White were received on trial and placed in studies of the first year.

2. On motion J. L. Jones, James D. Foy, and Irvin King were advanced to the studies of the third year.

3. On motion J. L. Jones and Irving King were admitted into full membership.

4. On motion Earl Spencer was continued in the studies of the third year.

5. On motion A. M. Cuerington, B. F. Stewart, J. H. Jackson, and Elmo Tatum were advanced to the studies of the second year.

6. On motion Karl Downs, Charles Warren, I. C. Greer, I. B. Loud, and L. W. Miles were graduated from the course of study and elected to elders orders.

7. On motion Saul White was elected as a local preacher to elders orders.

8. On motion the following were elected to deacons orders: Dale H. Hansboro, Philip Williams, A. B. Johnson, E. H. Carter, Mrs. Juanita Long, O. K. Brewster.

9. On motion the following men were elected to deacons to be ordained elsewhere: J. A. Pierce, Elmo Tatum, J. H. Jackson, Charlemagne Payne.

10. On motion the following men were granted the retired relation: N. W. Stephens.

11. On motion F. M. Hudspeth and H. C. Willis were given the supernumerary relation.

12. W. L. Shaw was received by transfer, Texas Conference.

13. Frank Blair was voted a year's leave of absence.

14. On motion the following men were left without appointments to attend school: Charlemagne Payne, J. A. Pierce, J. D. Foy, Charles Carrington, J. H. Jackson, Elmo Tatum.

15. The following men were entered as withdrawn from the ministry and membership of the church: Henry Tollerson, Zebra King, and Bertho Bateman.

16. The following men were retained on the retired roll: E. T. Allen, James Coe, J. T. Carper, J. W. Downs, R. H. Duncan, Mumford Fountain, E. C. Henderson, G. M. Mallory, T. S. Moore, J. S. Medlock, L. H. Richardson, I. T. Sanford, W. M. White, N. W. Stephens.

17. The following men were accepted as supply pastors: P. E. Donnell (2), J. W. Morgan (2), R. W. Weaver (3), W. M. Franklin (2), J. N. North (2), T. W. Stephens (3), R. W. Baker (3), O. K. Brewster (2).

Signed: K. W. McMILLAN.

AUDITING COMMITTEE'S REPORT

We, your Committee on Auditing Accounts, beg to report as follows:

We have examined the accounts of the conference treasurer and find them correct.

We examined the accounts of the Conference Board of Stewards and find them to be correct.

The treasurer of the Conference Board of Home Missions' accounts were turned over, audited by a special auditor of which we found to be correct in every detail in keeping with our polity and practice.

I. H. CHILDS
J. H. R. DUDLEY

COMMITTEE ON PERIODICALS

After careful consideration and discussion of the matter of the Dallas-Victoria Bulletin, we recommend that it be referred to the Committee on Methodist Book Concern for approbation, because of its relation to article 1094 in the Methodist Discipline.

Signed:

J. G. BROWN
L. E. MUSE
E. N. KING
B. A. BYARS
J. S. JORDAN
W. M. MOSELY.

COURTESY TO BISHOP SHAW

The West Texas Conference senses very keenly the benefit it has derived from the leadership, counsel, and guidance which Bishop A. P. Shaw has given it during this conference session. He has been kind, considerate, efficient and helpful. Every man can approach and be assured of consideration. Resolved that we tender him a rising vote of thanks and request him to hold the 1938 session of our conference, and we unanimously request the assignment committee to graciously comply with this request.

C. E. WHITIKER
L. L. HAYNES.

REPORT OF COMMITTEE ON MINISTERS AND MINISTERS' WIVES RELIEF ASSOCIATION

The West Texas Annual Conference Relief Association was organized October, 1937. It is a conference organization that is destined to come to the relief of hard worked and needy ministers and their wives of our conference who spend their lives in unselfish service and come down to the end unable to care for themselves in a time of distress. At such a time the Association will come to your relief and will prove to be a "friend indeed."

Join to-day without delay. Your donations are as follows: Each member agrees to donate \$1.00 at the Annual Conference each year, and to donate \$1.00 when notified of the death of a member. Send your donations to Rev. L. L. Haynes, 1814 Burford Street, Dallas, Texas.

Conference Officers: C. E. Whitiker, president, 1207 Hackberry Street, Austin, Texas; L. L. Haynes, secretary, 1814 Burford Street, Dallas, Texas; Mrs. D. N. Swann, treasurer, 505 S. Cameron Street, Victoria, Texas.

WEST TEXAS CONFERENCE RELIEF ASSOCIATION**Ministers and Ministers' Wives Relief Association of the West Texas Annual Conference, Organized October, 1937****BY-LAWS AND CONSTITUTION**

NAME. This organization shall be named THE MINISTERS' AND MINISTERS' WIVES' RELIEF ASSOCIATION of the West Texas Conference.

PURPOSE. Its purpose shall be to come to the relief of our ministers and their wives in time of need and at death, so that a decent, Christian burial may be provided for them.

MEMBERS. Members of the Annual Conference and their wives are eligible to membership in the Association. Accepted supply pastors who remain permanently also are eligible.

OFFICERS. The officers of the Association shall be: President, Vice President, Secretary, Assistant Secretary, and Treasurer. There shall be appointed each year at the Annual Conference a district secretary for each district in the conference. These officers shall be elected by the Annual Conference each year.

DUTIES OF OFFICERS. The president shall preside over all annual meetings. The secretary shall keep a permanent record and shall cause a copy of his report to be printed in the Annual Conference minutes each year. He shall receive and deposit all monies in a reputable bank approved by the Association, in the name of the Association and the treasurer. The treasurer shall make a report to the annual meeting which shall be at a regular conference session, presenting all cancelled checks to the auditing committee of the Annual Conference. He shall write all checks, which checks must be co-signed by the president and secretary.

The president and district secretaries shall promote the work of the Association throughout the Conference.

CONFERENCE ANNIVERSARY. This Association shall hold a regular session each year at Conference, with the bishop and the United Session, to make reports, elect officers and otherwise promote the work of the Association.

MEMBERSHIP FEES AND COLLECTIONS. The membership fee shall be \$1.00 annually, and \$1.00 shall be sent to the treasurer upon the death of a member. This is to be sent in immediately. All monies due the Association must be paid promptly and members failing to comply by the following Annual Conference will be dropped from the roll of the Association. An offering shall be taken at the Annual and district conference sessions and sent to the treasurer of the Association.

BENEFITS TO MEMBERS. The Association will pay immediately upon proof of death (and reply of members) of members a sum not to exceed \$100.00, to members in good and regular standing. Note: It is hoped that we may be able to increase this amount as the Association grows stronger.

EXPENSES TO ASSOCIATION. No officer shall receive any sort of salary or remuneration from this Association for services rendered. The secretary's postage bill shall be paid at the annual meeting.

TO OUR CHURCHES AND LAYMEN. We ask that the \$1.00 to be sent in upon the death of a member be taken from the charity offerings. We believe that our laymen will be happy to do so. These by-laws may be amended from time to time.

REPORT OF COMMITTEE FROM THE DEACONESS BOARD

Whereas Miss V. M. Souder, superintendent of Eliza Dee Home, and Miss Agnes Little of Sager Brown Home, are doing an outstanding job of work among our group, we the committee from the Deaconess Board, do express our appreciation for their untiring labors and wish their continued services among us regardless of Unification.

Respectfully submitted,
 MMES. R. H. DUNCAN
 M. M. SANFORD
 L. E. MOORE
 LOLO REED and
 D. N. SWANN.

TREASURER'S REPORT

Treasurer's Statement—1937:

World Service -----	\$ 321.00
Episcopal Fund -----	262.00
Conference Claimants -----	643.00
Minute Funds -----	93.00
Samuel Huston College -----	169.00
General Administration -----	15.00
Gulfside -----	10.00

Total Benevolences -----	\$1514.00

Communion collection -----	9.36
	\$1523.36
Total Cash -----	\$1526.35
Less -----	1523.36
	\$ 2.99
Less Exchange -----	1.00
	\$ 1.99
Balance -----	\$ 1.99

C. E. WHITIKER, Treasurer.

COURTESY TO T. B. ECHOLS

We are living in a much confused age. We know not what a day will bring forth. Youth is also confused, but we as members of the West Texas Conference can boast of having a sympathetic leader in the person of Dr. Timothy Blane Echols who has sensed the confusion of youth. So let him have honor among us. To him we contribute this bit of cowboy poetry:

This life is a million crooked roads,
 And after forty years of wandering 'round
 I can't say the right ain't always clear.
 I have seen many a man go wrong
 And miss the main high road.
 I don't set up to be no judge of right and wrong in men—
 I've been lost myself sometime, and may get lost again.
 And when I see a chap that seems as if he has gone astray,
 I want to think he started right and only lost his way.

Dr. Echols as leader of youth of the New Orleans Area is bringing light on the subject, and points to youth the external potentialities of life. Be it resolved that we give to him a rising vote of thanks.

Respectfully,

COMMITTEE.

GRADUATE COURSES

Our Negro churches are greatly in need of a growing leadership. The Commission on Conference Courses of Study has planned a series of courses for ministers who have graduated from the regular conference course. During the past year we had a few men to register for the correspondence courses. The Board of Examiners is anxious to have a large group of ministers take advantage of this opportunity offered to our Methodist leaders.

Resolved that we give this effort on the part of our church our whole-hearted support.

Signed,
 T. B. ECHOLS
 J. B. PHOENIX
 H. O. McCUTCHEON.

COMMITTEE ON EVANGELISM

We, your committee, met with Dr. W. T. Handy of the Commission on Evangelism. After a lengthy discussion we make the following recommendations: (1) That we cooperate with the program of the General Commission on Evangelism ordered by the General Conference. (2) We recommend that there be preaching missions throughout each district of the Conference by exchange of pulpits. (3) That we avail ourselves of the services of Dr. J. W. Golden, the area evangelists. (4) That 1937-1938 be a general evangelistic campaign celebrating Jno. Wesley's two hundredth anniversary of conversion, aldergate.

Signed,
 T. H. FOY, Chairman
 R. A. APPLING, Secretary
 A. G. RUSSEL
 R. L. PALMER.

ON PROHIBITION

Whereas, a great chronic emergency faces our country, according to two Harvard medical students who have been making WPA study of alcoholism in the Boston City hospital, and reports the result of their researches in the New England Journal of Medicine.

And, whereas, the study is based upon scrutiny of the records of fifty thousand cases of alcoholism admitted to the hospital since it was founded in 1864.

And, whereas, we know what the liquor makers are trying to do and what they are succeeding in doing.

Knowing they are trying to make more drinkers and want more people to drink their products and they want the drinkers to drink more.

Second: They want to break down all barriers to their traffic.

Third: They want to wipe out every state prohibition law, every county or municipal prohibition, every restriction which tends to decrease the use of their products. They want longer hours, not shorter; more outlets, not fewer.

They want to popularize drinking; encourage cocktail parties instead of teas; extend the use of beer to the kitchen; induce women to drink; bring beer to the table of every American family, so that the red cheeks of American children may be an answer to the blue noses of reformers.

And, whereas, the Methodist Episcopal Church has not for one moment accepted the so-called 'repeal' as a solution of the drink problem,

Be it resolved that the West Texas Conference, a strong factor in said church, preach, teach, lecture, speak publicly and privately, and vote for the same.

R. A. APPLING
A. D. JACQUES.

HOSPITALS AND HOMES

Since the hospitals and homes are vital in the great machinery of the church, and whereas they are being just meagerly supported by our group;

Be it resolved that we make a better show in our support of these institutions who are so helpful in the growth of the kingdom of God.

Signed: S. N. HARVEY.

SAN ANGELO DISTRICT—RESOLUTION NO. I

Waco, Texas, October 21, 1937

The West Texas has been regarded as one of the leaders among Negro conferences. The personnel of the conference has compared favorably with that of any of our Negro groups. Our district superintendents have been men of poise and good judgment in the main. The bishops who have presided over this conference have been visionists and very capable as administrators.

The charges of the conference have not paid as much in salary as we wanted to see, yet there has been some increases in membership and in respectability shown in its ministry.

We need to encourage our laymen in the work of the conference. For the past few years they have clamored for the reinstatement of the San Angelo district. Many pastors have felt the need of it in order that travel to district meetings might be lessened and that a more compact unit of charges and fellowship might prevail.

In the face of the distance of travel and the amount of work committed to the district superintendents of the Austin, Dallas, and Waco districts, we feel that less travel and a chance to give more time to the charges that have been given the district superintendents, would increase their efficiency in the districts, and another district would give chance for closer supervision of the work already organized, and another worker to build new charges and implant ourselves as Methodists more securely in the minds of the people of the Western section of this great state.

Whereas, we have felt that we have had more efficiency in the added man on the field to supervise the work of the districts in former years and

results have been more tangible and the men given chances for the satisfaction of their ambitions as church men, in that one more chance was possible for the superintendency,

Be it resolved that we ask our bishop and cabinet to reestablish the San Angelo district with the right to plan the charges and appointments of the same; and that as a conference pledge our unstinted support to Bishop Shaw in encouraging the development of the western cities of this conference.

K. W. McMILLAN.

WOMEN'S FOREIGN MISSIONARY SOCIETY

Whereas the needs of the foreign field are so great, be it resolved that we, the women of the Foreign Missionary Society, organize an auxiliary in every church in our charges.

Be it resolved further that we set aside the month of July to finish our dues, asking for an after collection on the fifth Sunday in July.

Signed:

R. R. BAILY
B. F. LEE
J. N. HOOEY
G. A. DESLANDES
MRS. C. S. WILLIAMS.

HOME MISSION COMMITTEE

We, your committee, beg leave to make the following report. Since this is one of the major boards of the church in that it administers the Loan and Annuity Funds; holds in trust any real or personal property, and dispose or handle the same for the good of the M. E. Church,

And since this Board is such an asset to the West Texas Conference may we not resolve to pay our whole quota of units, that the Board may serve in a larger way in the future.

Signed: S. N. HARVEY.

LAYMEN'S ASSOCIATION

We, the Laymen of the Methodist Episcopal Church, West Texas Conference, find that there is room for improvements in the percent of collections for Episcopal Funds and Conference Claimants' Funds.

So, be it resolved that we go on record as pledging our strength to the raising of these claims in full for 1937-1938.

Signed:

T. R. BIVINGS
M. S. BAILY
MRS. C. E. HOYT
J. S. HENRY
MRS. C. S. WILLIAMS.

COMMITTEE ON MINIMUM SALARY

Committee on Minimum Salary beg to make the following report. Since ministers' salaries are generally estimated high, but only a small percent paid in many charges, be it resolved that each charge be classified with the thought of raising a fund according to the size of the charge, to be applied to those places that are lower than a decent living would allow. Also resolved that the Laymen be informed of the plan and urged to raise these funds.

Committee:

R. A. APPLING
G. A. DESLANDES
L. L. HAYNES
M. C. ELLISON.

EDUCATION

The Conference notes with satisfaction the progress at Samuel Huston College.

We recommend that:

1. The sum of \$4000 be established as the conference goal for the coming year.
2. That the sum be apportioned to the districts according to their strength.
3. That three major efforts at raising the sum be made during the year; at the Lincoln Day rally, at the summer institutes, and at the Annual Conference.
4. That as much of the sum as possible be raised as an annual conference benevolence apart from World Service credit.

COMMITTEE ON EDUCATION.

HISTORICAL

Sermons, Addresses, and Special Hours of Inspiration

Welcome Program and Banquet in honor of Bishop A. P. Shaw.

Sermon by S. N. Harvey (Memorial).

Sermon by C. E. Whitiker.

E. W. Kelly preached the Conference Sermon.

Dr. W. J. King, Gammon, gave an address on Religion and Life's Work; Counsel Meeting, Oxford, England; also preached the Ordination Sermon.

W. T. Handy spoke for Commission on Evangelism; Prof. J. P. Brawley, for Board of Education, also President Harris of Arkansas, Philander Smith; Dr. A. R. Howard, for Temperance; M. L. Vaughters, for American Bible Society.

Bishop Shaw was at his best daily.

L. L. Haynes preached the Closing Sermon.

Music by Dallas and Austin choirs.

We are indebted to many others also.

REPORT OF BOARD OF STEWARDS

For annuity distribution 1052 years multiplied by \$1.25.

Received on these claims: Balance-----	\$ 11.25
From Board of Pensions and Relief-----	655.00
From Chartered Fund (For Emergency Relief)-----	60.00
Pastoral charges -----	638.00
From Conference investments-----	110.44
Interest on Stewards (?)-----	12.75
Total-----	\$1487.44

Actual Disbursements—Rate of Annuity \$1.25-----	Years 1052
To ministers -----	(14) See list
Widows -----	(35) See list
To children -----	(10) See list

On basis of Emergency Relief:

Mrs. W. M. Reed-----	\$ 40.00
Mrs. S. W. Harvey-----	20.00
Rev. H. A. Jones-----	80.00

Expense of Board of Stewards-----

Paid to Clearing House-----

List of Officers: T. H. Wyatt, President, 1604 New York Avenue, Austin

Jessie J. Hardeman, secretary, Box 822, Columbus

C. E. Whitiker, 1207 Hackberry St., Austin.

WEST TEXAS CONFERENCE STEWARDS' FUNDS IN TRUST

Statement as of October 15, 1937

1936—Oct. 15—Balance on hand.....	\$ 833.34	
Receipts—		
1936—Oct.28—From C. E. Whitiker, Treasurer.....	440.25	\$1273.59
Disbursements—		
1936—Nov. 4—Distributed to claimants.....	\$ 659.83	
1937—May 4—Disbursed to claimants.....	602.51	1262.34
Balance after 1936-37 distribution.....		\$ 11.25
Add—		
1937—Oct. 15—Board Dividend 1937.....	\$ 655.00	
Interest on Conference Permanent Fund to 10-15-37--	110.44	
Interest on Conference Steward Fund to 10-15-37-----	12.75	
Collection received from charges.....		778.19
Balance in fund on Oct. 15, 1937.....		\$ 789.44

West Texas Conference Permanent Fund in Trust

1937—Oct. 15—Balance in Fund (No change during year).....	\$3155.57
(Interest credited to Conference Stewards Funds above)	

BOARD OF PENSIONS AND RELIEF.

PAYMENTS MADE BY THE BOARD OF PENSIONS AND RELIEF TO THE CLAIMANTS OF THE WEST TEXAS CONFERENCE

PREACHERS

	Nov. 4	May 4	Total
Allen, E. T.....	\$ 6.30	\$ 6.30	\$ 12.60
Carper, J. T.....	23.80	23.80	47.60
Coe, James	4.90	4.90	9.80
Downs, J. W.....	57.45		57.45
Duncan, R. H.....	14.00	14.00	28.00
Fountain, M.	17.20	17.20	34.40
Henderson, E. C.....	18.20	18.20	36.40
Mallory, G. M.....	15.40	15.40	30.80
Medlock, John S.....	23.10	23.10	46.20
Moore, Turner S.....	21.70	21.70	43.40
Richardson, L. H.....	29.40	29.40	58.80
Sanford, I. T.....	17.50	17.50	35.00
Stone, John W.....	23.80	23.80	47.60
White, W. M.....	11.90	11.90	23.80
	\$ 284.65	\$ 227.20	\$ 511.85

WIDOWS AND CHILDREN

Bennett, Mrs. P. B.....	\$ 14.70	\$ 14.70	\$ 29.40
Blackston, Mrs. Wesley E.....	8.40	8.40	16.80
Brothers, Mrs. Annie.....	3.15	3.15	6.30
Brown, Mrs. James E.....	14.55	14.55	29.10
Caviness, Mrs. M. C.....	11.02	11.03	22.05
Coe, Mrs. John.....	9.45	9.45	18.90
Dennis, Mrs. R. D.....	8.92		8.92
Dickerson, Mrs. Alfred.....	5.77	5.78	11.55
Edmondson, Mrs. John L. S.....	11.30	11.30	22.60
Edmondson, Children	4.20	4.20	8.40
Eusan, Mrs. Joseph C.....	9.45	9.45	18.90
Eusan, Child	4.72	4.73	9.45
Gates, Mrs. Primus.....	11.55	11.55	23.10
Goff, Mrs. B. J.....	8.92	8.93	17.85
Goff, Child	5.25	5.25	10.50

	Nov. 4	May 4	Total
Harvey, Mrs. Silas W.-----	17.20	17.20	34.40
Holden, Mrs. J. H.-----	9.97	9.98	19.95
Humphrey, Mrs. S. D.-----	5.25	5.25	10.50
Hutchinson, Mrs. J. H.-----	16.80	16.80	33.60
Johnson, Mrs. Albert-----	12.07	12.08	24.15
Johnson, Child -----	5.07	5.08	10.15
Jones, Mrs. S. E.-----	15.75	15.75	31.50
Mooney, Mrs. William-----	15.75	15.75	31.50
Mosby, Mrs. William H.-----	14.70	14.70	29.40
Moten, Mrs. Rosia-----	2.10	2.10	4.20
Moten, Children -----	2.80	2.80	5.60
Napier, Mrs. J. H.-----	7.35	7.35	14.70
Pleasant, Mrs. George-----	5.77	5.78	11.55
Reed, Mrs. William-----	18.77	18.78	37.55
Roberts, Mrs. L. W.-----	3.15	3.15	6.30
Smith, Mrs. Emma E.-----	7.35	7.35	14.70
Sodia, Mrs. Riley-----	11.02	11.03	22.05
Stone, Mrs. John W.-----	5.25	5.25	10.50
Swann, Mrs. Harry-----	7.35	7.35	14.70
Townsend, Mrs. G. W.-----	13.12	13.13	26.25
Westbrooks, Mrs. C. P.-----	7.87	7.88	15.75
Williams, Mrs. C. S.-----	13.12	13.13	26.25
Williams, Children -----	11.55		11.55
Wright, Mrs. J. W.-----	8.40	8.40	16.80
W. G. and Willie J. Purnell-----	6.30	6.30	12.60
Waters, Mrs. Rachel E.-----		20.47	20.47
	<u>\$ 375.18</u>	<u>\$ 375.31</u>	<u>\$ 750.49</u>

SUMMARY

Paid Preachers -----	\$ 284.65	\$ 227.20	\$ 511.85
Paid Widows and Children-----	375.18	375.31	750.49
	<u>\$ 659.83</u>	<u>\$ 602.51</u>	<u>\$1262.34</u>

STATEMENT OF PROSPECTIVE DISTRIBUTION

Retired Ministers

Annuity Rate \$1.25—Year 1937-38

NAME	Total Approved Years	West Texas		Other		Total Annuity
		Years	Annuity	Years	Annuity	
Allen, Elijah T.-----	9	9	\$11 25			\$11 25
Carper, Thomas J.-----	29	29	36 25			36 25
Coe, James -----	7	7	8 75			8 75
Downs, John W.-----	23	23	28 75			28 75
Duncan, R. H.-----	20	20	25 00			25 00
Fountain, Mumford -----	21	3	3 75	18	22 50	26 25
Henderson, E. C.-----	26	26	32 50			32 50
Mallory, Greene M.-----	22	22	27 50			27 50
Medlock, John S.-----	33	33	41 25			41 25
Moore, Turner S., Sr.-----	31	31	38 75			38 15
Richardson, L. H.-----	37	37	46 25			46 25
Sanford, Isaac T.-----	25	25	31 25			31 25
White, W. M.-----	17	17	21 25			21 25
Stephens, N. W.-----	9	9				

Widows

Annuity Rate \$.9375. (Note: "Widow's Approved Years" are the Approved Years with husband and are multiplied by three fourths of the rate for Retired Ministers.)

NAME	Widow's Approved Years	West Texas		Total Annuity
		Years	Annuity	
Bennett, Philip B.-----	28 ¹ / ₂	28 ¹ / ₂	26 72	26 72
Blackson, Wesley E.-----	16	16	15 00	15 00
Brothers, George W.-----	5 ¹ / ₂	5 ¹ / ₂	5 16	5 16
Brown, James E.-----	21 ¹ / ₂	21 ¹ / ₂	20 16	20 16
Caviness, Monroe C.-----	20 ¹ / ₂	20 ¹ / ₂	19 22	19 22
Coe, John -----	18	18	16 88	16 88
Dickerson, Alfred -----	11	11	10 31	10 31
Edmondson, John L.-----	12	12	11 25	11 25
Eusan, Joseph C.-----	18 ¹ / ₂	18 ¹ / ₂	17 34	17 34
Goff, B. J.-----	17	17	15 94	15 94
Harvey, Silas W.-----	28	28	26 25	26 25
Holden, Joseph H.-----	19	19	17 81	17 81
Humphrey, S. D.-----	10	10	9 38	9 38
Johnson, Albert -----	23	23	21 56	21 56
Jones, Sidney E.-----	30	30	28 12	28 12
Mooney, William -----	30	30	28 12	28 12
Mosby, William H.-----	28	28	26 25	26 25
Moten, General M.-----	4 ¹ / ₂	4 ¹ / ₂	4 22	4 22
Napier, John H.-----	14	14	13 12	13 12
Pleasant, George -----	11	11	10 31	10 31
Reed, William -----	31	31	29 06	29 06
Roberts, Lewis W.-----	7	7	6 56	6 56
Smith, Isaac -----	14	14	13 12	13 12
Sodia, Riley -----	21	21	19 69	19 69
Stone, James W., Jr.-----	10 ¹ / ₂	10 ¹ / ₂	9 84	9 84
Swann, Harry -----	14	14	13 12	13 12
Townsend, G. W.-----	24 ¹ / ₂	24 ¹ / ₂	22 97	22 97
Westbrooks, Charles P.-----	15	15	14 06	14 06
Williams, C. S.-----	24 ¹ / ₂	24 ¹ / ₂	22 97	22 97
Wright, J. W.-----	16	16	15 00	15 00
Stone, John W., Sr.-----	32 ¹ / ₂	32 ¹ / ₂	30 47	30 47
Waters, George -----	38 ¹ / ₂	38 ¹ / ₂	36 09	36 09
Hamilton, C. H.-----	15	15	-----	-----

STATEMENT OF PROSPECTIVE DISTRIBUTION

Children

Annuity Rate \$.3125. (Note: Father's Approved Years" are the total number of Father's Approved Years and are multiplied by one fourth of the rate for Retired Ministers.)

Name of Mother or Guardian	Name of Child	Age	Father's Approved Years	West Texas		Others		Total Annuity
				Years	Annuity	Years	Annuity	
Edmondson, Mrs. L. S.	Mary -----	17	12	12	\$ 3 75			\$ 3 75
Edmondson, Mrs. L. S.	Grace -----	16	12	12	3 75			3 75
Eusan, Mrs. J. C.		17	27	23	7 19	4	1 25	8 44
Moten, Mrs. Rosa	Deshler -----		4½	4½	1 41			1 41
Moten, Mrs. Rosa	Lorenzo -----		4½	4½	1 41			1 41
Moten, Mrs. Rosa	Noy -----		4½	4½	1 41			1 41
Moten, Mrs. Rosa	Mary -----		4½	4½	1 41			1 41
Blackwell, Mrs. W. H.	W. G. -----	17	18½	18½	5 78			5 78
Blackwell, Mrs. W. H.	Willie J. Purnell	12	18½	18½	5 78			5 78
Williams, Mrs. C. S.	Lois -----	14	33½	11½	3 59	22	6 88	10 47

Notes:—Children sixteen years of age and over are not to be counted unless in school. Mrs. J. W. Stones married Rev. J. W. Stones 1902, retired 1931. By vote of the Conference Rev. C. H. Hamilton's one year on trial, 1916, which does not appear on record, was restored to Mrs. I. H. Hamilton, making her annuity rate 15 years.

Certificate of Secretary

I certify that this report, together with the supporting data on Forms 5A, 6A, and 7A accompanying, has been carefully inspected and that to the best of my knowledge is correct.

JESSE J. HARDEMAN, Secretary.

REPORT OF THE SECRETARY OF THE CONFERENCE BOARD OF HOME MISSIONS AND CHURCH EXTENSION

Received, First Quarter, Maintenance-----	\$ 311.75
Second Quarter, Maintenance-----	261.75
Second Quarter Maintenance-----	50.00
Third Quarter, Maintenance-----	311.75
Fourth Quarter, Maintenance-----	311.75

Total Received 1936-7-----\$1247.00

C. E. WHITIKER, Secretary.

CONFERENCE BENEVOLENCE QUOTAS BY DISTRICTS

Conference Claimants

Austin District -----	\$350.00
Dallas District -----	450.00
San Antonio District-----	450.00
Victoria District -----	150.00
Waco District -----	300.00
San Angelo District -----	28.00
	\$1728.00

Episcopal Funds

Austin District -----	210.00	
Dallas District -----	230.00	
San Antonio District -----	230.00	
Victoria District -----	80.00	
Waco District -----	130.00	
San Angelo District -----	40.00	
		864.00

General Conference Expense

Austin District -----	\$ 85.00	
Dallas District -----	100.00	
San Antonio District -----	100.00	
Victoria District -----	65.00	
Waco District -----	75.00	
San Angelo District -----	20.00	
		400.00

Conference Minutes

Austin District -----	36.00
Dallas District -----	40.00
San Antonio District -----	40.00
Victoria District -----	32.00
Waco District -----	36.00
San Angelo District -----	16.00

World Service 600 Units

Austin District -----	125 Units
Dallas District -----	140 Units
San Antonio District -----	140 Units
Victoria District -----	80 Units
Waco District -----	115 Units
San Angelo District -----	50 Units

Samuel Huston College

Austin District -----	\$800.00	
Dallas District -----	900.00	
San Antonio District -----	900.00	
Victoria District -----	600.00	
Waco District -----	700.00	
San Angelo District -----	100.00	
		\$4000.00

STATISTICIAN'S REPORT—AUSTIN DISTRICT

NAMES OF CHARGES	NAMES OF PASTORS	MINISTERIAL SUPPORT										
		Support of Pastor			District Super'ents		Support of Bishops		Conference Claimants		Total Paid for Ministerial Support	Total Deficiency
		Total Claim including House Rent	Total Paid including House Rent	Rental Value of Parsonage	Total Claim including House Rent, etc.	Total Paid including House Rent, etc.	Claim	Paid	Claim	Paid		
Austin Circuit	R. W. Baker	\$ 410	\$ 75	\$ 60	\$ 80	\$ 38	\$ 10		\$ 20		\$ 113	\$ 607
Simpson Circuit	R. W. Allen	960	660	160	144	144	20	5	40	3	812	352
Wesley	C. E. Whitiker	1880	1695	180	272	252	25	25	60	40	1912	218
Belton Circuit	F. J. Hutchinson	720	324	120	120	80	12	8	30	1	413	519
Brownwood Circuit	J. N. Hooey	700	400	8	80	67	10	8	20	4	479	341
Cedar Creek Circuit	D. F. Vance	225	165	60	50	36	3	3	3	1	205	75
Fayetteville Circuit	R. A. Appling	560	266	60	88	74	12	2	25	2	354	331
Georgetown Circuit	J. L. Watley	750	327	96	86	86	8	6	16	12	431	528
LaGrange Circuit	A. D. Jacques	660	260	60	90	90	15	5	30	6	361	594
Lampasas Circuit	Supply	200	115	75	30	30	2	2	5		117	120
Llano Circuit	G. W. Kelley	472	402	72	72	72	10	8	20	2	484	90
Lockhart Circuit	B. A. Byars	460	300	60	120	78	10		20		378	232
Luling Circuit	S. N. Harvey	1000	210	144	144	112	10	7	20	2	331	843
San Angelo	J. H. Carruthers	1344	1019	144	116	116	10	10	20	7	1152	225
Smithville Circuit	B. F. Stewart	450	250	60	80	80	6	5	12	10	345	203
Temple Circuit	T. M. Bruton	900	476	96	160	149	14	5	28	7	629	673
Winchester Circuit	J. S. Jordan	600	300	100	80	80	15		30		380	345
	Totals	\$12582	\$ 7244	\$ 1555	\$ 1816	\$ 1584	\$ 182	\$ 99	\$ 399	\$ 97	\$ 8896	6296

STATISTICIAN'S REPORT—DALLAS DISTRICT

Abilene	T. J. D. Sims	572	394	72	60	60	10	4	15	5	463	194
Corsicana	M. B. Burkley	500	300	100	50	40	5	1	5	1	342	212
Dallas—Mill City	N. Pinkard	200	103		20	5	4	8	8	1	111	128
Mt. Zion	P. Donnell					8						
St. Paul	L. L. Haynes	1950	1950	300	280	280	48	35	97	80	2345	31
Trinity	J. H. Childs	900	690	240	80	80	9	5	24	3	784	229
Warren	G. V. Cavitt	600	351		50	50	10	5	15	3	407	261
Wesley	J. L. Jones	200	100		40	20	5	2	10	2	200	65
Denison	J. H. R. Dudley	1080	680	240	100	80	10	10	25	10	780	295
Ennis-Waxahachie	U. C. Greer	450	100	72	60	47	2	2	5	2	151	366
El Paso	I. H. Pierce	844	744		120	120	21	4	42	4	872	155
Ferris-Lancaster	F. L. Blair	600	258		80	72	3	6	6	2	332	350
Ft. W.—Cowan-C'w'l	R. W. Weaver	300	130		40	40	5	2	5	2	174	196
St. Andrews	K. W. McMillan	2120	2120	300	260	260	45	35	90	60	2475	40
Thompson	D. B. Baker	1000	802	102	100	100	16	10	10	7	919	112
Lubbock Circuit	T. D. Mackey	196	32	12	10	21	2	2	2	2	57	165
Mexia—Jones Chapel	T. A. Wills	870	522	120	70	60	10	3	20	3	588	262
Mexia Circuit	C. H. Hamilton	780	350	96	100	87	14	4	28	5	446	476
Milford-Italy	E. N. King	600	150	72	90	90	10	2	15	2	244	471
Pelham Circuit	H. O. McCutchin	800	369	96	150	150	40	1	20	1	511	499
Sherman-Pilot Point	C. R. Greene	744	544	144	80	69	10	10	20	20	443	211
Wichita Falls	B. F. Lee	650	200	144	60	49	16	5	32	10	264	494
Graham	E. L. Spencer	165	165	96	30	30	3	3	6	2	200	4
	Totals	16474	11054	1681	1930	1818	298	159	500	227	13108	5216

STATISTICIAN'S REPORT—SAN ANTONIO DISTRICT

Beeville Circuit	M. Majors	672	554	72	80	54	15	2	30	2	410	570
Belmont Circuit	T. W. Maye	940	940	240	80	80	18	5	35	7	1032	199
Corpus Christi	R. L. Palmer	940	940	240	80	80	17	20	35	20	1060	17
Cuero	C. W. Franklin	1000	400	120	100	85	10	2	20	4	491	659
Eades Circuit	H. C. Willis	900	802	84	100	82	7	3	6	3	490	439
Floresville Circuit	J. F. Muse	560	260	60	100	72	5	3	10	2	277	342
Gonzales-El	M. L. Wvatt	1020	390	120	100	90	6	5	13	7	467	173
Gonzales Circuit	Wm. Mosley	560	204	60	64	55	12	2	25	3	263	338
Honda-Uvalde	F. M. Hudspeth	530	304	30	60	41	12	3	25	3	351	276
Kerrville	Obie Coe	800	600	75	100	100	12	5	25	7	712	225
Kingsville Circuit	M. W. Stephens	895	885	100	100	94	20	10	40	10	1009	46
Nixon Circuit	W. M. Ellison, Jr.	300	75		60	60	2	2	2	2	139	126
Pearsall Circuit	N. W. Stephens	130	130		130	130	15	15	3	3	193	
Pleasanton Circuit	A. M. Mason	500	286		60	55	5	1	10	2	344	231
S. A.—E. St. Paul	T. H. Wvatt	1300	1122	120	80	5	25	4	50	5	1211	250
Tacobs	W. M. Ellison	1370	987	170	144	144	25	11	20	5	1148	250
Tones	T. W. Miles	800	300	100	80	50	17		35		350	502
St. Paul	G. A. Deslandes	2100	2100	300	300	307	45	45	90	90	2542	
So. San Antonio	H. T. McKinney								1			
S. A. Heights	F. C. Henderson											
Seguin-Olmos	W. B. Lott	1144	550	144	100	100	25	5	50		655	664
S. A.—Lincoln-Sanf.	G. F. Alexander	1300	360	5	90	90	7	5	15	8	403	897
	Totals	17761	12189	2040	1928	1774	300	131	540	183	13544	6195

828

STATISTICIAN'S REPORT—VICTORIA DISTRICT

NAMES OF CHARGES	NAMES OF PASTORS	MINISTERIAL SUPPORT										
		Support of Pastor			District Super'ents		Support of Bishops		Conference Claimants		Total Paid for Ministerial Support	Total Deficiency
		Total Claim including House Rent	Total Paid including House Rent	Rental Value of Parsonage	Total Claim including House Rent, etc.	Total Paid including House Rent, etc.	Claim	Paid	Claim	Paid		
Alleyton Circuit.....	J. Caesar (Sup.).....	400	40	60	40	11	6		1	1	61	326
Altair Circuit.....	D. C. Carroll.....	800	86		140	48	11	11	40	5	150	841
Bloomington Circuit..	W. M. Franklin.....	250	68		40	13	4	4	3	2	87	210
Cologne Circuit.....	A. C. Holden.....	560	200	60	100	67	5	5	10	2	274	401
Columbus Circuit.....	T. J. Hardeman.....	946	496	96	120	72	10	4	11	3	575	515
Edna Circuit.....	W. W. Baker.....	900	735	100	160	145	15	1	35	5	878	224
Garwood Circuit.....	T. W. Stephens.....	350	85		80	48	5	5	2	2	140	297
Hallettsville Circuit..	M. C. Ellison.....	910	466	60	120	105	10	7	20	4	520	540
Goliad Circuit.....	L. L. Strait.....	810	275	60	108	40	2	1	5	1	317	618
Oakland Circuit.....	J. H. Brown.....	800	430	60	50	50	8	8	20	6	594	274
Schulenburg Circuit..	T. H. Bryant.....	800	300	60	120	48	7	6	15	6	360	582
Sublime Circuit.....	O. K. Brewster.....	180	100	25	40	27	3	2	5	1	130	123
Victoria.....	A. G. Russell.....	1000	910	180	160	104	17	17	45	10	1041	181
Wharton Circuit.....	J. H. Strait.....	800	375		100	97	7	4	20	5	493	446
Weimar Circuit.....	H. Grant.....	315	85		40	30	6		10		70	245
Yoakum Circuit.....	George Waters.....	572	203	72	140	80	5		10		283	444
	Totals.....	10393	4854	839	1570	985	131	80	252	53	5973	6267

STATISTICIAN'S REPORT—WACO DISTRICT

Aquilla-Hillsboro	T. W. Morgan.....	350	145		68	42	2	1	5	1	189	237
Bowman-Reagan	Esau Smith.....	500	200	96	100	30	6	4	7	4	238	375
Bremond Circuit.....	T. H. Marshall.....	430	156	30	80	60	11	3	20	2	221	320
Calvert	I. B. Loud.....	600	200	50	60	55	5	5	10	10	270	405
Chilton-Mooresville ..	P. H. Phillips.....	578	238	36	120	58	5	1	10		287	416
Cameron	E. G. Gray.....	120	120		12	12	1	1	2	1	124	1
Groesbeck-Kosse	R. R. Bailey.....	472	258	60	72	72	8	3	20	3	336	237
Hubbard-Dawson	H. Harrison	400	171	48	50	22	3	3	2	2	198	237
Moody-Gatesville	T. H. Foy.....	500	411	60	60	47	11	6	9	5	468	112
Mart Circuit.....	A. D. Holden.....	1100	500	100	90	90	25	7	50	4	701	504
Marlin	S. D. Mosley.....	1090	596	90	135	135	18	15	29	15	761	511
Mayesfield Circuit.....	N. T. Moore.....	680	430	80	80	36	15	1	30	1	488	237
Rosebud Circuit.....	A. M. Cuerington.....	100	80		24	12	2	2	3	3	77	52
Rocky-Cedar	S. A. Keesee.....	524	301	24	72	72	12	4	25	5	382	251
Springfield Circuit.....	Dee Tucker	150	51		20	5	4		7		51	130
Satin-Maiors	H. Kuykendall	700	285		100	54		6	16	4	349	475
Valley Mills.....	T. B. Eggleston.....	636	261	36	60	40	15	2	30	2	305	435
Waco-Bracks	Shaw	600	285	33	80	80			30	2	215	
Jones	T. G. Brown.....	850	226	120	80	80	12	10	15	9	625	333
Mt. Zion.....	T. E. Muse.....	970	720	120	80	80	12	12	25	8	820	160
St. James.....	Z. W. Holmes.....	1200	800	400	200	181	20	14	35	18	1033	422
	Totals.....	12566	6718	1383	1643	1283	195	100	360	99	8138	5613

STATISTICIAN'S REPORT—RECAPITULATION

DISTRICT	DIST. SUPT.											
Austin	T. W. Warren.....	12582	7244	1555	1816	1584	182	99	399	97	8896	6296
Dallas	F. D. Young.....	16474	11054	1681	1930	1818	298	159	500	227	13108	5216
San Antonio.....	T. B. Phoenix.....	17761	12189	2040	1928	1774	400	131	540	183	13544	6195
Victoria	H. A. Jones.....	10393	4854	839	1570	985	131	80	252	53	5973	6267
Waco	T. Walt Moore.....	12566	6718	1383	1643	1283	195	100	360	99	8138	5613
	Totals.....	69776	42059	7498	8887	7444	1206	569	2051	659	55272	29587

STATISTICIAN'S REPORT—AUSTIN DISTRICT (Continued)

CHARGES	CHURCH MEMBERSHIP											CHURCH SCHOOLS				Epworth League			
	Baptisms		Preparatory		Full Membership						No. church schools	Officers and teachers	Total enrollment in all Departments	Church school current expenses	Senior and Young People	Intermediate	Juniors		
	Children Baptized	Adults Baptized	Received during year	Now on roll	Received from P. M.	Received on Confession of Faith	Received by Transfer and Renewal	Received from other Denominations	Full members on roll	Inactive Members								Removed by Transfer and Withdrawal	Deaths during year
Austin Circuit			6	6					110	25			2	12	40	4			
Simpson Circuit	4		6		6		17	3	306	46	7	2	1	10	50	36	1	1	1
Wesley	9	4	10	10		6			515	8	4	11	1	25	180	30	1	1	1
Belton Circuit	5		7	4	12			1	222	18	2	4	2	16	135	25	1	1	1
Brownwood Circuit	3	2	6	6	2	2	2		69	20	2	1	2	12	50	17	1	1	2
Cedar Creek Circuit	2		3	7					68	18	2	1	2	8	34	12	1	1	1
Fayetteville Circuit	10		2		2	2			122	42	1		2	12	106	8	1		1
Georgetown Circuit	4		4	2	2	2			113	38		2	2	10	45	17	1	1	1
LaGrange Circuit	10		18	10	18	5	6	3	152	20	10	2	3	20	75	15	1	1	1
Lampasas Circuit									37				2						
Llano Circuit		3	3	3		4	3	4	49	9		1	2	12	27	7	1		1
Lockhart Circuit	2		3		1	1	1		104	88	2	2	2	10	40	15	1		1
Luling Circuit			12	12	2	2		1	224	40	10	8	3	20	210	24	1		1
San Angelo	3		7	10	2	5			116	28	4	1	1	12	45	47	18	4	12
Smithville Circuit	10	1	8	20	1				60	10		2	3	21	36	12	1		1
Temple Circuit	11	11	14	18	15	24		6	190	30		5	4	26	108	63			
Winchester Circuit	1	3		10		1		2	79	10			3	18	49	15			
Totals	74	24	109	118	63	54	29	20	2536	450	45	42	37	234	2333	357	30	11	25

STATISTICIAN'S REPORT—DALLAS DISTRICT (Continued)

Abilene	3	1	1		1	2	12	4	43	2		1	1	4	14	5			
Corcicana									53	13			1	3	23	5	10	3	1
Dallas—Mill City									42		4	1	1	6	16	6			
Mt. Zion								11	13	6	7								
St. Paul	15			40	4	9	3	71	1000	300	25	8	1	22	315	150	1	1	1
Trinity	8	2	8	37	8	6	11	11	112	40	1	2	1	8	49	36	49	18	13
Warren						1	3	2	46	4	5	2	1	8	46	12	12		18
Wesley			4	4					35	15	4	1	1	6	15	5			
Denison	4	2	4	28	4	2	2		175	4			1	11	67	14	15	10	25
Ennis - Waxahachie	9			65	10				65	40			2	8	20	12			
El Paso	5	1	5		5	1			76	27	1	2	1	8	60	16			
Ferris - Lancaster	1	1	1	1					55			3	2	8	52	12			
Ft. W. — Cowan-Cogswell									46	21	2	1	5	15	4		12		
St. Andrews	10	15	25		25	17	34	64	976	121	35	13	1	54	280	136	35	15	33
Thompson		1	2	1	2	1		3	174			2	1	8	55		10		
Lubbock Circuit							2	1	59	4	4		1	3	10	1	1		3
Mexia — Jones Chapel	4	2	4	6		4	1	9	167	70	4	3	1	8	66	17	10	5	8
Mexia Circuit		6	6			4	2	2	369			4	3	15	160	19	1		1
Milford - Italy	10		20	20				1	66	30			2	12	25	2	22	7	15
Pelham Circuit	1	1	1	6				1	260	6	1	2	3	20	148	21	3		
Sherman - Pilot Point	1		1	11			3	3	80	1	22	2	2	10	42	18	2		1
Wichita Falls				12			8	20	48		1	7	32	16	1			1	
Graham				4	1				11	2			1	3	10	2	1		
Totals	52	32	87	235	56	38	162	121	3951	706	93	46	64	256	1478	489	193	60	129

STATISTICIAN'S REPORT—SAN ANTONIO DISTRICT (Continued)

Beeville Circuit	1		11	11				1	55			1	2	12	50	10	25	6	10
Belmont Circuit	1	1	4	12	2				160	36	3	3	2	12	45	18			
Corpus Christi	4	2	12	24	9	1	13	8	98		2		1	6	37	24		11	
Cuero									141	45	1	3	1	10	40	15	15		
Eades Circuit		12		12	4		1	2	81	4	3	4	2	2	10	3			
Floresville Circuit	2	2	2		2	2		1	63	3		1	2	8	40	9		12	6
Gonzales - Elm	9	4	14	14		2		1	191	50	10	3	2	18	120	28	30	8	30
Gonzales Circuit	14	1	14	5	16		2		181	22	3	1	2	19	90	8			
Hondo - Uvalde			3	15		3			89			2	1	5	24		1	1	1
Kerrville				21			5		84	15	5	1	1	9	46	21	10	12	15
Kingsville Circuit		2	2	6		4		2	60	18	4		2	12	35	20	20	5	15
Nixon Circuit			2	59	2		6	13	59	3	1	9	1	6					
Pearsall Circuit				10					10				1	3	10	5			
Pleasanton Circuit	5	2	7	41	7				41				2	10	50	12	1		
San Antonio—E. St. Paul	12	7	31	10	21	19	4	8	164		5	2	1	9	75	20			
Jacobs	11	5	26	5	19	14	28	14	382	45	9	7	1	14	170	28	86	40	44
Jones			10	10					79	20		1	1	8	46	10	10	15	12
St. Paul	7	3	6		63	18	18	112	834	17	3	42	1	153	464	16	24	16	80
South San Antonio																			
San Antonio Heights																			
Seguin - Olmos				18		1	3	3	192	50		4	2	12	70	20			
San Ant.—Lincoln-Sanford	1		10	5	10	9		1	115	15		1	1	9	50	14	1		
Totals	67	41	154	278	155	73	81	166	3768	337	49	83	32	335	1472	281	223	126	213

STATISTICIAN'S REPORT—VICTORIA DISTRICT (Continued)

CHARGES	CHURCH MEMBERSHIP											CHURCH SCHOOLS			Epworth League				
	Bap-tisms		Prepar-atory		Full Membership							No. church schools	Officers and teachers	Total enrollment in all Departments	Church school current expenses	Senior and Young People	Intermediate	Juniors	
	Children Baptized	Adults Baptized	Received during year	Now on roll	Received from P. M.	Received on Confes-sion of Faith	Received by Transfer and Renewal	Received from other Denominations	Full members on roll	Inactive Members	Removed by Transfer and Withdrawal								Deaths during year
Alleyton Circuit									58	28		2	1	3	17	2			
Altair Circuit			6	10		6			134	12		6	2	10	75	16			
Bloomington Circuit									24	8		1	2	6	26	8			
Cologne Circuit	5	2	6	4	2	3		2	136	16		4	3	18	63	14	2		
Columbus	14	2	14	65		14	6		196	50		8	1	12	100	18	1		
Edna Circuit	12	3	11	17	12	6	3	4	290	25	1	4	3	18	100	32	50	10	30
Garwood Circuit		5							85	25		2	3	15	35	5	1		1
Hallettsville Circuit									215	20		5	1	8	75	9	15	7	15
Goliad			2	11	4	4			111	20	8	2	1	12	40	8	28	5	12
Oakland Circuit	2	22	22	22		22		1	260	23		5	4	20	110	15	1	1	1
Schulenburg Circuit	4		4			4			135			3	2	10	56	15			
Sublime Circuit		1				1		5	31	5	1		2	5	20	4	16		
Victoria	2	1	8	10		4			211	20		1	1	12	70	10	1		
Wharton Circuit	7	6	3	12		5	4	14	130	60	12	1	2	9	48	17	1		1
Weimar Circuit			1	24	1				24	12		1	2	9	24	13			
Yoakmu Circuit	6	1							153	40		1	2	9		13	15		
Totals	52	43	79	175	19	69	13	26	2093	364	22	47	32	176	859	199	131	23	61

STATISTICIAN'S REPORT—WACO DISTRICT (Continued)

Aquilla-Hillsboro	3		9			1	3	1	91	24	2		3	11	35	14	1	1	
Bowman - Reagan									73	20			2	11	60	10	1		
Bremond Circuit	3			4		2	1		76		1	1	2	8	27	10	1		
Calvert	2			20	20	11			131	50	1	5	1	8	65	15	1		
Chilton - Mooresville	1		2	2		4			115	35	1	3	2	12	52	10	1		1
Cameron			2		1	1	7		2		1	1	5	1				1	1
Groesbeck - Kosse	1		30	16	1		4	3	106			1	2	6	42	36	1		
Hubbard - Dawson				1	10		5		40	14		3	2	9	26	10	1		1
Moody - Gatesville	1			42	1	2			42	8	3	2	2	8	19	13			1
Mart Circuit								2	160	20	1	2	2	15	60	24			
Marlin			7	7	4		3	3	272	27		3	1	12	120	84	1	1	1
Mayesfield Circuit			10		5	10		10	138			1	2	8	70	10	1		1
Rosebud Circuit							3		17	7			1	5	17	1			1
Rocky - Cedar	1	7	1	15		9	1	2	175	35	3	4	2	14	60	20	1		
Springfield Circuit	1					1		1	30	10									
Satin - Majors	8	1	6	6		7			185	100		1	2	8	30	8	1		1
Valley Mills	2		4	3	4				67	35		2	1	6	35	12	1	1	1
Waco - Bracks									100	60			1	3	20	5			
Jones	7		7	7		3	15	15	172	35	1	4	1	10		27	1		1
Mt. Zion	4	3	21	10	11	9	6	14	155	70	10	2	1	8	40	20	1	1	1
St. James	4		3	6		12	6	3	385	125	4	8	1	15	115	50	1		1
Totals	38	11	102	139	57	72	54	57	2432	675	28	43	36	178	913	383	15	5	12

STATISTICIAN'S REPORT—RECAPITULATION (Continued)

DISTRICT	Children Baptized	Adults Baptized	Received during year	Now on roll	Received from P. M.	Received on Confes-sion of Faith	Received by Transfer and Renewal	Received from other Denominations	Full members on roll	Inactive Members	Removed by Transfer and Withdrawal	Deaths during year	No. church schools	Officers and teachers	Total enrollment in all Departments	Church school current expenses	Senior and Young People	Intermediate	Juniors
Austin	74	24	109	118	65	54	29	20	2536	450	45	42	37	234	2333	357	30	11	25
Dallas	52	32	87	235	56	38	162	121	3951	706	93	46	64	256	1478	489	192	60	128
San Antonio	67	41	154	278	155	73	81	166	3768	337	49	83	32	335	1472	281	223	126	213
Victoria	52	43	79	175	19	69	13	26	2093	364	22	47	32	176	859	199	131	23	61
Waco	38	11	102	139	57	72	54	57	2432	675	28	43	36	178	913	383	15	5	12
Totals	283	151	531	945	352	306	339	390	14780	2532	237	261	201	1179	7055	709	591	225	439

STATISTICIAN'S REPORT—AUSTIN DISTRICT (Continued)

CHARGE	CHURCH PROPERTY									Miscellaneous				
	Number of Church Buildings	Estimated Value of Land and Buildings	Number of Parsonages	Estimated Value of Land and Buildings	Value of other properties, Endowments, Bonds, etc.	Paid for building and improvements	Paid for interest on indebtedness	Paid on old indebtedness not including interest	Present indebtedness inc. current exp.	Current expenses not including ministerial support	Local Preachers	Subscribers to the Advocate	Amt. contributed by Ladies Aid Society	No. of congregations or preaching places
Austin Circuit	2	900									1	1		2
Simpson Circuit	1	1500	1	2000			150	450	40		1		7	1
Wesley	1	60000	1	2500	1500	100	600	50	250		4	37	437	1
Belton Circuit	2	8000	2	1900							1	14		2
Brownwood Circuit	2	2275	1	400		80		75	20		2	20	2	2
Cedar Creek Circuit	2	500	1	250		15		5				2	2	2
Fayetteville Circuit	2	4000	1	1200			6	550		550	1	1	4	2
Georgetown Circuit	3	10000	1	1000	1000			11	6066	45	1	6		3
LaGrange Circuit	3	3000	1	500		50		10		100	2	3	5	3
Lampasas Circuit	2	3000	1	1000							1			2
Llano Circuit	1	1500	1	1000	150							2		2
Lockhart Circuit	2	5000	1	500			40	101	99	44	1	1		2
Luling Circuit	3	4000	1	1500		720	51	668	696	130	1	5	14	3
San Angelo	1	1600	1	2500		700				87		3	55	1
Smithville Circuit	3	2000	1	500		115		50			2	4		
Temple Circuit	4	6000	1	500		245	1024	402	2460	244	3	26	30	4
Winchester Circuit	3	2000	1	300		30				12	1	2		3
Totals	37	115275	16	16550	2650	2055	2076	2367	9591	1252	20	132	586	35

STATISTICIAN'S REPORT—DALLAS DISTRICT (Continued)

Abilene	1	2000	1	300						84	1	3	3	1
Corsicana	1	250	1	250		50				15		4	1	1
Dallas—Mill City												5		1
Mount Zion	1	660				35			625		1	1		1
St. Paul	1	50000	1	2000			1600	2000	31134	5926	1	23	300	1
Trinity	1	3500	1	1400		300	80	300	554	107	1	9	24	1
Warren	1	1200								27	1	5		1
Wesley	1	800	1	800									5	1
Denison	1	3500	1	1500			15				3	5	10	1
Ennis - Waxahachie	2	5000	2	5000				400	24	60	1	1		2
El Paso	1	15000						75	550	53	1	6		1
Ferris-Lancaster	1	2800		2800		112	167		42	1	4		8	2
Ft. Worth — Cowan-Cogswell	1	1000									1	2	4	1
St. Andrews	1	15000	1	3000		4000	125	1050	1900	1900	2	107	115	1
Thompson	1	5000	1	2000	2		168	225	2193	68	2	8	5	1
Lubbock Circuit	1	800	1	200		237					1			1
Mexia—Jones Chapel	1	2000	1	1200			300	290	230	80	1	2	20	1
Mexia Circuit	3	6000	1	800			15				3			3
Milford - Italy	2	600	1	600		309				18	1	1	2	2
Pelham Circuit	3	6600	1	1000		20				25	1	8	24	3
Sherman-Pilot Point	2	3900	1	700	500	62		57	30	160		5	47	2
Wichita Falls	1	2500	1	1000		500		168	40	1	4			1
Graham	1	300										3		1
Totals	29	127826	18	24550	502	5625	2470	4565	37322	8525	30	198	573	31

STATISTICIAN'S REPORT—SAN ANTONIO DISTRICT (Continued)

Beeville Circuit	1	2000	1	1000		27		10		6	1		5	2
Belmont Circuit	2	1500	1	250			5	15	25	25	1		10	2
Corpus Christi	1	3500	1	1000			4	1695	500	161		4	17	1
Cuero	1	2100	1	1000						175	1	3		2
Eades Circuit	2	1000	1	250		20	20		2	1		1	3	2
Floresville Circuit	2	3000	1	600			5	40	20	12		3		2
Gonzales - Elm	2	1000	1	800		30					1	3	5	2
Gonzales Circuit	2	2550	1	800	25	43	19	23	96	2	1	2		2
Hondo - Uvalde	2	2010	1	2220						18				2
Kerrville	2	2000	1	650				200	40			2	115	1
Kingsville Circuit	2	2000	1	800		284	28	255			1	3	5	2
Nixon Circuit	3	2400	1	2000										3
Pearsall Circuit	1	1200		1200						196		1		2
Pleasanton Circuit	2	2000								32	3	1		2
San Antonio—East St. Paul	1	5000	1	2000				396	4500	165	1	8		1
Jacobs	1	10000	1	2000		41	150	450	4400	180	3	10	10	1
Jones	1	1900	1	1200					1100		1	2		1
St. Paul	1	75000	1	3000	29000	791				2767	2	87	70	1
South San Antonio														
San Antonio Heights														
Seguin-Olmos	2	3500	1	15							1	5		2
San Antonio—Lincoln-Sanford	2	3000	1	1000			80	300	1491	594	1	2	11	2
Totals	33	127760	18	21785	29025	1236	311	3386	12174	4334	18	137	251	31

STATISTICIAN'S REPORT—VICTORIA DISTRICT (Continued)

CHARGE	CHURCH PROPERTY										Miscellaneous			
	Number of Church Buildings	Estimated Value of Land and Buildings	Number of Parsonages	Estimated Value of Land and Buildings	Value of other prop-erties, Endowments, Bonds, etc.	Paid for building and improvements	Paid for interest on indebtedness	Paid on old indebtedness not including interest	Present indebtedness inc. current exp.	Current expenses not including ministerial support	Local Preachers	Subscribers to the Advocate	Amt. contributed by Ladies Aid Society	No. of congregations or preaching places
Alleyton Circuit	4	2500	1	600					10					4
Altair Circuit	2	1000	1	400		85	40	37	135	16	2	2	3	2
Bloomington Circuit		700									2			2
Cologne Circuit	3	2500	1	500		25			25	3		3		3
Columbus	1	5000	1	500		1585			333	89	1	3	19	1
Edna Circuit	3	4050	1	500		80		800	25	98		6	25	3
Garwood Circuit	2	2500				85		85		15	1	3	20	3
Hallettsville Circuit	1	2000	1	800						18		4		1
Goliad	1	3000	1	1000		25				36	1	1		2
Oakland Circuit	4	1500	1	800		15		15		30	2			4
Schulenburg Circuit	3	2100								8	4	3	8	3
Sublime Circuit	2	250	1	100		5						2	3	2
Victoria	1	5000	1	2000			4	75		70	2	12	50	1
Wharton Circuit	2	3000				630			10		7	4		2
Weimar Circuit	2	500		500							1			2
Yoakum Circuit	2	3030	1	1200					20					2
Totals	33	35930	11	7900		2535	44	1012	523	415	24	42	125	37

STATISTICIAN'S REPORT—WACO DISTRICT (Continued)

Aquilla - Hillsboro	3	4500				121			126	40	1			3
Bowman - Reagan	2	2500	2	500		17				5		3	2	2
Bremond Circuit	2	3000	1	500					116	25	1	2	5	2
Calvert	1	3000	1	1000		35				60		7	20	1
Chilton - Mobresville	2	4000	1	600				6	29	14	3	4	1	2
Cameron													1	1
Groesbeck - Kosse	2	4000	1	1600						24	1	3	9	2
Hubbard - Dawson	2	5000	1	400	250	11				14			9	3
Moody-Gatesville	2	3500									1	1	16	2
Mart Circuit	2	5000	1	1200		70	26	100	182	30		2	15	2
Marlin	1	10000	1	3000				250		87	1	5	157	1
Mayesfield Circuit	2	1000	1	400		30				5	2		3	2
Rosebud Circuit		500			150				100			2		1
Rocky - Cedar	2	2100	1	600		150				40	2	3	25	2
Springfield Circuit	1	700												
Satin - Majors	2	1500				150	150		560	20		6	20	2
Valley Mills	1	1200	1	800	35		4		25	27		2	4	2
Waco - Bracks	1	1000	1	500						5				
Jones	1	2000	1	1500			117	7	900	42	1		50	1
Mt. Zion	1	4000	1	1500		20	70	120	800	100		6	15	1
St. James	1	8000	1	4000		100	210	225	2300	300	1	12	65	1
Totals	31	138000	17	16100	435	704	577	808	25838	838	14	58	407	32

STATISTICIAN'S REPORT—RECAPITULATION (Continued)

DISTRICT														
Austin	37	115275	16	16550	2650	2055	2076	2367	9591	1252	20	132	586	35
Dallas	29	127826	18	24550	502	5625	2470	4565	37322	8525	39	198	573	31
San Antonio	33	127760	18	21785	29025	1236	311	3386	12174	4334	18	137	257	31
Victoria	33	35930	11	7900		2535	44	1012	523	415	24	42	125	37
Waco	31	138000	17	16100	435	704	577	808	25838	838	14	58	407	32
Totals	163	544791	80	86885	32612	12155	5478	12138	85448	15364	115	567	1942	166

EPWORTH LEAGUE STATISTICS—AUSTIN DISTRICT

NAMES OF CHARGES OR CHURCHES	Young People		Seniors		Inter- mediates		Juniors		Paid World Service	
	Chapters	Members	Chapters	Members	Chapters	Members	Chapters	Members	Twenty-four Hour Day Plan	Through all other Channels
Austin Circuit										
Simpson Circuit	1	40	1	20			1	20		8
Wesley Church	1	40								
Belton Circuit	2	45			2	15	2	30		4
Brownwood Circuit										
Cedar Creek Circuit	1	14	3	4	1	6	1	4		2
Fayetteville Circuit			1	20			1	14		
Georgetown Circuit	1	12	1	12	1	5	1	15		
LaGrange	2	25	1	18			1	20		5
Lampasas Circuit										
Llano Circuit	1	8						1	7	
Lockhart Circuit	1	10	1	10			1	10		1
Luling Circuit	2	40	2	20			2	10		6
San Angelo	1	18	1	12						15
Smithville	1	7	1	8						2
Temple and Bartlett										
Winchester	3	15								
Totals.....	17	274	12	124	4	26	10	124	7	43

EPWORTH LEAGUE STATISTICS—DALLAS DISTRICT

Abilene										
Corsicana										
Dallas—Mill City										
Mount Zion										
Saint Paul			1	35	1	20	1	15		
Trinity	1	18	1	12	1	7				3
Warren			1	12			1	18		5
Wesley										
Denison	1	15			1	7	1	8		
Ennis-Waxahachie	1	10								
El Paso										
Ferris-Lancaster	1	10	1	15	1	4	1	12		
Ft. Worth—Cowan-Cogswell										
St. Andrews	1	35					1	33		
Thompson										
Lubbock Circuit										
Mexia—Jones Chapel	1	10	1	10	1	5	1	8		
Mexia Circuit	1	30					1	30		
Milford - Italy										
Pelham Circuit	3	42	3	42			3	50		
Sherman-Pilot Point	2	18	1	13			1	5		2
Wichita Falls			1	4						3
Graham			1	4			1	6		
Odessa	1	4	1	4						
Totals.....	13	192	12	151	5	43	12	185		13

EPWORTH LEAGUE STATISTICS—SAN ANTONIO DISTRICT

Beeville Circuit	1	10	1	9	1	7	1	13		5
Belmont Circuit										
Corpus Christi					1	11				2
Cuero			1	15			1	10		
Eades Circuit										
Floresville Circuit		12						6		5
Gonzales-Elm	2	30						20		
Gonzales Circuit										
Hondo-Uvalde			1		1	10	1			
Kerrville	1	10	1	10	1	13	1	9		6
Kingsville Circuit	2	15	2	10	2	8	3	12		10
Nixon Circuit										
Pearsall Circuit										
Pleasanton Circuit	1	10	1	20						
San Antonio—East Saint Paul										
Jacobs	1	86	1	40	1	44				
Jones	1	20	1	10	1	9				
St. Paul	1	19	1	12			1	24		10
South San Antonio										
San Antonio Heights										
Seguin-Olmos	1	10								
Totals.....	11	202	10	126	8	102	8	94		38

EPWORTH LEAGUE STATISTICS—VICTORIA DISTRICT

NAMES OF CHARGES OR CHURCHES	Young People		Seniors		Inter- mediates		Juniors		Paid World Service	
	Chapters	Members	Chapters	Members	Chapters	Members	Chapters	Members	Twenty-four Hour Day Plan	Through all other Channels
Alleyton Circuit										
Altair Circuit	1	12			1	10				
Bloomington Circuit						1	13			
Cologne Circuit										
Columbus										
Edna Circuit	1	10	1	9	1	8	1	12		
Garwood Circuit										
Goliad	1	28	1		1	5	1	12		
Hallettsville Circuit										
Oakland Circuit	1	20	1	8	1	12				
Schulenburg Circuit										
Sublime Circuit	1	9								
Victoria	1	20	1	10	1	9	1	21		
Wharton Circuit	1	12	2	18						
Weimar Circuit										
Yoakum Circuit	2	20								
Totals.....	9	131	6	45	5	45	16	45		

EPWORTH LEAGUE STATISTICS—WACO DISTRICT

Aquilla-Hillsboro.....	1	10			1	10				
Bowman-Reagan	1	20	1	10						
Bremond Circuit	1	12								
Calvert	1	21								10
Cameron										
Chilton-Mooresville			2	20			2	25		1
Groesbeck-Kosse										
Hubbard-Dawson.....	1	10	1	12	1	13	1	9		
Moody-Gatesville					1	10				
Mart Circuit										
Mayesfield Circuit										
Marlin	1	10	1	1	1	10	1	12	15	24
Rocky-Cedar			1	20						
Rosebud Circuit	1	20								
Springfield Circuit										
Satin-Majors										
Valley Mills	1	15	1	15	1	15	1	24		24
Waco—Bracks										
Jones			1	24			1	14		4
Mt. Zion	1	25			1	20	1	20		6
St. James	1	10	1	17			1	12		
Totals.....	10	153	9	136	6	78	8	119	15	69

CHURCH SCHOOL STATISTICS—AUSTIN DISTRICT

NAMES OF CHARGES	SUNDAY CHURCH SCHOOLS										Church Mem' ship		
	No. of Schools	No. of classes under 18 years	No. of classes using closely graded lessons	No. organized departments meeting separately	Officers and teachers	ENROLLMENT					Pupils, including home dep't, who are church members	Accessions to church from church school	
						Pupils of all grades	Nursery roll	Home department	Total enrollment	Average attendance			
Austin—Austin Circuit													
Simpson	1	3			10	39	15		64	15	4		
Wesley	1	4	3	9	25	185	9		219	100	10		
Temple and Bartlett Cir.	4	13			26	42			68	30	26	4	
Belton Circuit	2	10	5		16	135			151	35	4		
Brownwood Circuit	2	4			12	50	5		62	35	30	5	
Cedar Creek Circuit	2	2	3		8	26			34	18		4	
Fafetteville Circuit	2	4		4	12	74	20		106	60	40	4	
Georgetown Circuit	2	6		4	10	35	6		45	30	115		
LaGrange Circuit	3	6	3	9	20	75			95	50	50	10	
Lampasas Circuit	2												
Llano Circuit	2	9			12	27	6		45	27	7		
Lockhart Circuit	2	3		6	10	30			40	25	104		
Luling Circuit	3	4		3	20	210		20	250	100	8	4	
San Angelo	1	5	5		12	45			57	46	116	2	
Smithville Circuit	3	6		6	21	36			57	15	20		
Winchester Circuit	1	4		3	10	60			70		20	5	
Totals	33	83	19	44	224	1069	61	20	1263	581	552	38	

CHURCH SCHOOL STATISTICS—DALLAS DISTRICT

Abilene	1	2			4	10			14	12		1	
Corsicana	1	1	3	2	3	20			23	10			
Dallas—Mill City	1	1	1		3	10			13	5			
Mount Zion													
St. Paul	1	12	14		22	315			237	172	12		
Trinity	1	4	3	5	8	40			48	36	33	8	
Warren	1	3		1	8	46	4		54	25	20		
Wesley	1	3	1		5	30			35	15	11	1	
Denison	1	4		1	11	67			78			2	
Ennis-Waxahachie	2	2	3	4	8	20			28	14			
El Paso	1	8	4	4	8	60			68	45		6	
Ferris - Lancaster	2	6	4	4	14	60			74	35	8	4	
Ft. Worth—Cowan-Cogswell	2	4	4	2	14	30			44	15	4	6	
St. Andrews	1	11	11	6	54	201	10	15	280	125	250	10	
Thompson	1	3	2	3	8	55	10		73	35			
Lubbock Circuit	1	2			5	20			25	10			
Mexia—Jones Chapel	1		1		8	66			74	35			
Mexia Circuit	3	4			15	145			160	100	2		
Milford - Italy	2	3	2	2	12	25			40	15	10		
Pelham Circuit	3	4		4	20	140	10		174	100	2	1	
Sherman-Pilot Point	2	4		6	10	30	2		42	25			
Wichita Falls	1	2	1	1	7	32			39	32	10	12	
Graham	1	1			3	8	10	10	31	10	4		
Odessa	1				3	15			18	8			
Totals	32	84	45	54	190	1300	46	25	1772	879	366	51	

CHURCH SCHOOL STATISTICS—SAN ANTONIO DISTRICT

Beeville Circuit	2	2	2	1	12	38			50	20	4	1	
Belmont Circuit	2	4			12	45		10	67	22	35	2	
Corpus Christi	1	2			6	37			43	27	19	4	
Cuero	1	3	4		10	40			50	30			
Eades Circuit	2	4	4		10	50		8	68	20	6		
Floresville Circuit	2	1			8	40			48			2	
Gonzales - Elm	2	7	7		18	120			138	100	8	8	
Gonzales Circuit	2	2	7	7	19	71			80	45			
Hondo - Uvalde	1	12			5	24			29	12			
Kerrville	1	4	5	4	8	46			54	30			
Kingsville Circuit	2	4	4		8	30			38	20	4	2	
Nixon Circuit	1			2	7	22			29	10		4	
Pearsall Circuit													
Pleasanton Circuit	2	2		2	10	40			50	30		5	
San Antonio—East St. Paul	1	5		5	9	75	7		91	40	10	5	
Jacobs	1	2	2		14	170	12	70	196	15	25	2	
Jones	1	2		3	6	30			36	20			
St. Paul	1	16	19	9	42	357	7	28	464	250		22	
South San Antonio													
San Antonio Heights													
Seguin-Olmos	2	3	4	4	10	80			90	40			
Totals	27	75	58	37	214	1345	26	216	1601	731	111	67	

CHURCH SCHOOL STATISTICS—VICTORIA DISTRICT

NAMES OF CHARGES	SUNDAY CHURCH SCHOOLS											
	No. of Schools	No. of classes under 18 years	No. of classes using closely graded lessons	No. organized departments meeting separately	ENROLLMENT					Church Mem'ship		
					Officers and teachers	Pupils of all grades	Nursery roll	Home department	Total enrollment	Average attendance	Pupils, including home dep't, who are church members	Accessions to church from church school
Alleyton Circuit												
Altair Circuit	2	3		4	10	65			75	35		
Bloomington Circuit	2	2		3	6	26			32	18		
Cologne Circuit	3	3	3	3	18	63	12		93	50	136	
Columbus	1	3	5	6	12	88			100	60		
Edna Circuit	3	6	12	12	18	100			118	77		
Garwood Circuit	2	3	4	4	10	46			56	22		
Goliad	1	5			12	40			52	20	1	
Hallettsville Circuit	1	2	4	4	8	75			83	38		
Oakland Circuit	4	20	1		20	110	2		132	20	22	
Schulenburg Circuit	2	2			10	35			45	18		
Sublime Circuit	2	3	3		5	20			25	20		
Victoria	1	3	4	6	12	96			108	50		
Wharton Circuit	2	5	5	6	9	9	32		50	26	48	4
Weimar Circuit	1	2		3	6	18			24	11		
Yoakum Circuit	2	4	2	8	12	94			106	50		
Totals	29	75	43	59	168	882	46		1099	515	207	4

CHURCH SCHOOL STATISTICS—WACO DISTRICT

Aquilla - Hillsboro	3	6			11	35			46	10		
Bowman - Reagan	2				11	49			60			
Bremond Circuit	2			4	8	30	3		38	27	4	
Calvert	1	5		4	8	65			73	30	40	
Chilton - Mooresville	2	4			12	52			66	20	12	
Cameron												
Groesbeck - Kosse	2	2	3		7	42	1		49	18		1
Hubbard - Dawson	2	1	2		9	26	4		39	18	32	
Moody - Gatesville	2	2		3	8	19			21	13	12	
Mart Circuit	2	2	1	2	15	60			75	20		
Marlin	1	1		3	12	120			132	60		3
Mayesfield Circuit	2	2	2		8	70			78	50		
Rosebud Circuit	1		3		3	17			20	15	17	
Rocky - Cedar	2	6		3	14	60			74	50	16	
Springfield Circuit	2				7	20			27	10		
Satin - Majors												
Valley Mills	1	3	4	5	6	35			41	25		
Waco - Bracks												
Jones	1	3	2	3	10	60			70	50		
Mount Zion	1	3			8	40			48	30		6
Saint James	1	4	6	6	15	115			130	30	20	
Totals	30	45	23	33	172	935	8		1087	476	153	10

CHURCH SCHOOL STATISTICS—AUSTIN DISTRICT (Continued)

NAMES OF CHARGES	FINANCES				Leadership Training			VACATION				
	Rally Day Offering	Paid by church school to World Service	Paid all other Benevolences	Expenses for lesson material, etc.	No. Methodist training classes	Enrollment	No. interdenominational classes	Enrollment	No. of vacation schools	No. of teachers and helpers	Pupils enrolled	Total expense of vacation schools
Austin—Austin Circuit												
Simpson	5	20	36	1	12			1	5	85	9	
Wesley	3	163	25	30								
Temple and Bartlett Circuit		9		63								
Belton Circuit		1	14	25		8	1	4	1	1	100	190
Brownwood Circuit		10		17								
Cedar Creek Circuit	2	1	3	12								
Fayetteville Circuit			7	8								
Georgetown Circuit	25	23	10	17								
LaGrange Circuit	2		5	12	1	12			1	8	60	6
Lampasas Circuit												
Llano Circuit		36	10	10								
Lockhart Circuit	5	5	8	5								
Luling Circuit	2	29	12	24	1	16		10				
San Angelo		31		27	3	28	1	11				
Smithville Circuit												
Winchester Circuit		6		40	1	20						
Totals	44	334	130	291	18	84	2	26	7	93	169	196

CHURCH SCHOOL STATISTICS—DALLAS DISTRICT (Continued)

Abilene	6	1	4	5								
Corsicana		1	2	5								
Dallas—Mill City		1	3	6								
Mount Zion												
Saint Paul	2		25	150					1	10	80	
Trinity		12	36	36	1	8						
Warren	2	6		12								
Wesley		1	3	8								
Denison	12	3	12	1	12							
Ennis - Waxahachie				12	1	10						
El Paso		16										
Ferris - Lancaster	2	4	4	14								
Ft. Worth—Cowan-Cogswell		2	4	8								
St. Andrews	50		10	136	1	51			1	6	57	47
Thompson		5	33									
Lubbock Circuit	2	12		4								
Mexia—Jones Chapel			10	17	1	9						
Mexia Circuit				19								
Milford - Italy	2	3		12	1	15						
Pelham Circuit	1		9	21								
Sherman-Pilot Point	2	4	12	18								
Wichita Falls		3	1	15								
Graham				2								
Odessa				4								
Totals	81	74	168	485	17	73			2	15	137	47

CHURCH SCHOOL STATISTICS—SAN ANTONIO DISTRICT (Continued)

Beeville Circuit				10								
Belmont Circuit				8								
Corpus Christi		2	2	24					1	12	127	67
Cuero Circuit				10								
Eades Circuit			2	8								
Floresville Circuit				9								
Gonzales - Elm	3	18	3	28								
Gonzales Circuit				8								
Hondo - Uvalde				12								
Kerrville		10	11	21								
Kingsville Circuit	15	15	20	28	2	15						
Nixon Circuit				6								
Pearsall Circuit												
Pleasanton Circuit				6	1							
San Antonio—East St. Paul	4			20					1	6	74	5
Jacobs	10		25									
Jones				12								
Saint Paul		35	47	153	26	30		1		1	8	84
South San Antonio												
San Antonio Heights												
Seguin - Olmos				21								
Totals	32	80	110	433	29	45		1	2	19	209	156

CHURCH SCHOOL STATISTICS—VICTORIA DISTRICT (Continued)

NAMES OF CHARGES	FINANCES				Leadership Training				VACATION			
	Rally Day Offering	Paid by, church school to World Service	Paid all other Benevolences	Expenses for lesson material, etc.	No. Methodist training classes	Enrollment	No. interdenominational classes	Enrollment	No. of vacation schools	No. of teachers and helpers	Pupils enrolled	Total expense of vacation schools
Altair Circuit		5	3	16								
Alleyton Circuit				8								
Blomington Circuit				14								
Cologne Circuit			5	18								
Columbus			10	33								
Edna Circuit		10		15								
Garwod Circuit		4		10				1	4	53	4	
Goliad		1		9								
Hallettsville Circuit				15								
Oakland Circuit	6			20								
Schulenburg Circuit	1			4								
Sublime Circuit		11	2	33								
Victoria				18								
Wharton Circuit		6		12								
Weimar Circuit				21								
Yoakum Circuit												
Totals.....	7	37	20	245				1	4	53	4	

CHURCH SCHOOL STATISTICS—WACO DISTRICT (Continued)

Aquilla - Hillsboro.....		14		14								
Bowman - Reagan.....	2	12	3	10								
Bremond Circuit	2		3	10								
Calvert	1	5	5	12				1	5	70	5	
Chilton - Mooresville.....		2		10								
Cameron				36								
Groesbeck - Kosse.....	1	4		8								
Hubbard - Dawson.....	3	4	3	13				1	5	37	4	
Moody - Gatesville.....	1	34		24								
Mart Circuit				84								
Marlin				5								
Mayesfield Circuit				5								
Rosebud Circuit				20								
Rocky - Cedar.....	2	5		4								
Springfield Circuit.....				12				1	5	20	5	
Satin - Majors.....				27								
Valley Mills		12	4	20								
Waco — Bracks.....				27				1	6	95		
Jones				20				1	4	139	6	
Mount Zion	8			25				1	10	75	5	
Saint James	8	96	50									
Totals.....	28	188	72	339				6	35	436	25	

CONFERENCE TREASURER'S REPORT—AUSTIN DISTRICT

CHARGE	Total cash payments for all purposes	Disciplinary Benevolences				OTHER ITEMS					
		World Service on apportionment	Total World Service	Woman's Foreign Missionary Society	Woman's Home Missionary Society	Total Disciplinary Benevolences	SUPPORT OF			Total Other Items	
							District Superintendents	Bishops (Episcopal Fund)	Conference Claimants		General Administration Fund
Austin—Austin Circuit	6	10	10		10	29	1	1		31	
Simpson Tabernacle	24	68	81	10	81	144	4	5		153	
Wesley Chapel	102	180	206	19	206	252	25	40	2	319	
Bartlett Circuit	6	9	12	3	12	61	2	3	4	70	
Belton Circuit	6	6	13	5	13	80	8	1		89	
Brownwood Circuit	15	30	37	7	37	67	8	4	4	83	
Cedar Creek Circuit		5	5		5	36				36	
Fayetteville Circuit	4	9	9		9	74	2	2		78	
Georgetown Circuit	41	48	48	12	60	86	3	12		104	
LaGrange Circuit	13	30	30		30	88	5	6		99	
Lampasas Circuit		8	8	2	10	25	3			28	
Llano Circuit	13	36	36	3	39	72	8	2		82	
Lockhart Circuit	8	24	24		24	80	4	2		86	
Luling Circuit	18	31	31	3	32	112	7	2		121	
San Angelo	29	129	129		129	118	10	7		135	
Smithville Circuit	21	36	36		36	80	5	10		95	
Temple	8	7	7	9	16	80	3	4	3	90	
Winchester Circuit	3	16	16		16	99	5	3		107	
Totals	302	682	738	3	60	765	1583	103	104	13	1806

CONFERENCE TREASURER'S REPORT—DALLAS DISTRICT

Abilene	15	18	18		18	60	4	5		69	
Corsicana	9	10	10		10	40	1	1		42	
Dallas—Mill City		2	2	1	2	6				6	
Mount Zion	2	3	8	1	2	8	1	1		10	
Saint Paul	85	300	336	23	336	280	35	80		395	
Trinity	14	34	36	2	36	80	2	3		88	
Warren	3	33	39	2	39	50	5	3		58	
Wesley		9	9		9	20	1			21	
Denison	40	38	38		38	80	10	10		100	
Ennis - Waxahachie	2	7	7		7	47	2	2		51	
El Paso	9	45	50	5	50	120	2	3		125	
Ferris - Lancaster		10	12	2	12	70	2			72	
Ft. Worth—Cowan-Cogswell	10	9	9		9	39	2	3		44	
Saint Andrews	125	173	183		183	260	35	60	5	360	
Thompson Chapel	17	64	70	6	70	100	10	10		120	
Lubbock Circuit	19	12	12		12	24	3	2		29	
Mexia — Jones	12	15	18	3	18	60	3	3		66	
Mexia Circuit	12	9	9		9	87	4	5		96	
Milford - Italy	6	3	4	1	4	90	2	2		96	
Pelham Circuit	4	18	23	5	23	150	4	1		155	
Sherman-Pilot Point	40	37	40	3	40	69	10	20	1	100	
Wichita Falls	10	22	25	3	25	49	5	10		64	
Graham	3	6	12	6	12	30	3	2		35	
Odessa	2	2	2		2	20	2	1		23	
Totals	439	879	972	5	58	1033	1839	148	227	6	2117

CONFERENCE TREASURER'S REPORT—SAN ANTONIO DISTRICT

Beeville Circuit	4	8	8		8	54	2	2		58	
Belmont Circuit	5	6	6		6	65	1	1		67	
Corpus Christi	70	36	42	6	48	80	13	20	2	113	
Cuero	16	15	21	6	27	85	2	4		91	
Eades Circuit	7	2	2		2		2	3		5	
Floresville Circuit	6	22	22		22	72	3	2		77	
Gonzales - Elm	17	17	17		17	65	5	7		77	
Gonzales Circuit	10	7	7	1	8	55	2	2		59	
Hondo - Uvalde	8	6	6		6	41	3	3		47	
Kerrville	12	32	32		32	100	5	7		112	
Kingsville Circuit	22	43	51	1	7	59	89	6	9	3	97
Nixon Circuit	7	13	13		13	43	4	3		50	
Pearsall Circuit		6	6		6	4	1			5	
Pleasanton Circuit	1	8	8		8	53	1	2		56	
San Antonio—E. St. Paul	11	40	44	4	48	80	4	5		89	
Jacob's Chapel	23	60	70	10	80	144	7	9		160	
Jones Chapel	7	15	15		15	41	3	4		48	
Saint Paul	138	435	502	67	569	307	45	90	5	437	
South San Antonio											
San Antonio Heights											
Seguin - Olmos	15	49	49		49	100	5	7		112	
Lincoln Heights	17	38	37		37	90	5	8	1	104	
Totals	396	858	958	7	95	1122	1548	115	198	11	1864

CONFERENCE TREASURER'S REPORT—VICTORIA DISTRICT

CHARGE	Total cash payments for all purposes	Disciplinary Benevolences				OTHER ITEMS					
		World Service on apportionment	Total World Service	Woman's Foreign Missionary Society	Woman's Home Missionary Society	Total Disciplinary Benevolences	SUPPORT OF				Total Other Items
							District Superintendents	Bishops (Episcopal Fund)	Conference Claimants	General Administration Fund	
Alleyton Circuit											
Altair Circuit	18	12	12		12	48	4	5			57
Bloomington Circuit	3	2	2		2	13	2	2			17
Cologne Circuit		13	13		13	68	3	3			74
Columbus Circuit	1	27	27		27	43	5	1			49
Edna Circuit	8	43	43		43	145	1	5			151
Garwood Circuit	8	25	25		25	48	5	2			55
Goliad Circuit	3	6	6		6	40	1	1			42
Hallettsville Circuit	6	42	42	14	56	105	7	4	1		117
Oakland Circuit	5	6	6		6	55	2	3			60
Schulenburg Circuit	15	24	24		24	51	4	5			60
Sublime Circuit	1	11	11		11	27	2	1			30
Victoria	28	58	58		58	104	17	10			131
Wharton Circuit	6	19	19		19	97	5	4			105
Weimar Circuit	3	1	1		1		1	1			2
Yoakum Circuit	3	6	6		6	14	4	3			21
Totals	105	295	295	14	309	858	63	50	1		972

CONFERENCE TREASURER'S REPORT—WACO DISTRICT

Aquilla - Hillsboro	5	14	14		14	42	1	2			45
Bowman - Reagan	14	12	12		12	30	4	4			38
Bremond Circuit	6	13	13		13	60	4	2			66
Calvert Circuit	20	31	31	7	38	51	5	9			65
Chilton - Mooreville	1	10	9		9	58	1	1			60
Cameron											
Groesbeck - Kosse	12	24	24		24	73	3	3			79
Hubbard - Dawson	5	4	4		4	23	3	4			30
Moody - Gatesville	11	4	4	2	6	47	6	5			57
Mart Circuit	23	30	30	1	31	90	7	5			102
Marlin	25	67	67	12	79	144	13	10			167
Maysfield Circuit	1	6	6		6	56	1	1			58
Rosebud Circuit	2	11	11		11	12	2	3			17
Rocky - Cedar	15	19	19	10	29	72	3	5			80
Springfield Circuit	7	5	6		6	5	2	2			9
Satin - Majors	17	17	17		17	54	6	8			60
Valley Mills	11	12	12		12	40	4	2			46
Waco—Bracks Chapel	8	20	20	2	68	50	5	3			58
Jones Chapel	19	68	68	3	72	80	10	9			108
Mount Zion	13	100	100	12	112	80	13	7	1		101
Saint James	44	94	94	16	112	181	14	18			213
Totals	259	562	551	65	673	1248	107	95	1		1465

CONFERENCE TREASURER'S REPORT—RECAPITULATION

NAMES OF DISTRICTS											
Austin District	314	682	738	3	60	765	1583	103	104	13	1805
Dallas District	439	879	972	5	58	1033	1839	148	227	6	2117
San Antonio District	391	858	958	7	95	1122	1548	115	198	9	1864
Victoria District	108	295	295		14	509	858	63	50	1	972
Waco District	259	562	551		65	673	1248	107	95	1	1465
Total	1512	3266	3514	15	292	4103	7076	536	674	30	8224

CONFERENCE TREASURER'S REPORT (Continued)

AUSTIN DISTRICT

CHARGES	Samuel Huston College	Other A.C. items			Grand total disciplinary and annual conference benevolences, etc.
		Minutes Publication Fund	Area Expense Fund	Total Annual conference benevolences	
Austin—Austin Circuit	4	1	2	7	38
Simpson Tabernacle	10	2	5	17	251
Wesley Chapel	135	15	17	168	685
Bartlett Circuit	7	5	3	12	94
Belton Circuit	4	2	6	12	114
Brownwood Circuit	23	3	7	33	149
Cedar Creek Circuit		2	8	10	51
Fayetteville Circuit	1			1	88
Georgetown Circuit	39	5	5	49	213
LaGrange Circuit	2p	5	6	33	162
Lampasas Circuit		1	4	5	43
Llano Circuit	3	4	6	13	134
Lockhart Circuit	3	3	6	12	122
Luling Circuit	2		7	9	163
San Angelo	20	6	8	34	298
Smithville Circuit	10	2	6	18	150
Temple	8	7	3	18	124
Winchester Circuit	20	3	5	34	157
Totals	311	66	104	485	3036

DALLAS DISTRICT

Abilene	5	3	4	14	101
Corsicana	5	2	3	10	62
Dallas—Mill City	2	1	1	4	12
Mt. Zion			1	1	13
St. Paul	106	13	20	139	872
Trinity	15	4	8	27	149
Warren	12	2	5	19	116
Wesley		2	3	5	35
Denison	10	5	8	23	161
Ennis-Waxahachie	1	2	1	4	62
El Paso	11	3	4	18	193
Ferris-Lancaster		1	3	4	83
Ft. W.—Cowan-C'swell	2		2	4	92
St. Andrews	25	10	20	55	608
Thompson Chapel		5	8	13	203
Lubbock Circuit	1	1		2	55
Mexia—Jones	4	3	5	12	96
Mexia Circuit	2		8	10	115
Milford-Italy	2	1		2	101
Pelham Circuit	2	2	10	14	192
Sherman-Pilot Point	6	5	5	17	157
Wichita Falls	3	3	5	11	100
Graham	2	1	2	5	52
Odessa		1	2	3	47
Totals	216	70	128	416	3682

SAN ANTONIO DISTRICT

Beeville Circuit					58
Belmont Circuit	6			6	80
Corpus Christi	10	6	10	30	187
Cuero	5	2	10	23	127
Eades Circuit	1			6	9
Floresville Circuit			4	4	193
Gonzales-Elm	2	1	5	8	94
Gonzales Circuit	2	1		2	69
Hondo-Uvalde	1	1	2	3	57
Kerrville	26	4	11	53	197
Kingsville Circuit	30	4	11	51	209
Nixon Circuit	1	3	2	2	69
Pearsall Circuit					10
Pleasanton Circuit	8	2	1	11	75
San Antonio—E.St. P.	25	4	7	36	169
Jacobs Chapel	23	5	9	37	267
Jones Chapel				48	56
St. Paul	215	10	25	250	1199
So. San Antonio					
San Antonio Heights					
Seguin-Olmos	5	2	12	19	180
Lincoln Heights		3		3	145
Totals	362	48	110	592	3340

VICTORIA DISTRICT

CHARGES	Samuel Huston College	Other A.C. items			Grand total Disciplinary and annual conference benevolences, etc.
		Minutes Publication Fund	Area Expense Fund	Total Annual Conference Benevolences	
Alleyton Circuit					
Altair Circuit	3	2		14	83
Bloomington Circuit	1	2	5	8	17
Cologne Circuit	4	1	12	12	86
Columbus Circuit	7	5	12	12	88
Edna Circuit		4	6	10	204
Garwood Circuit	15	2	5	22	102
Goliad Circuit		1	7	8	56
Hallettsville Circuit		5	12	17	188
Oakland Circuit		3	14	17	83
Schulenburg Circuit	2	4	7	13	97
Sublime Circuit	5	4	13	13	54
Victoria	15	10	43	43	232
Wharton Circuit	58	3	11	73	198
Weimar Circuit					3
Yoakum Circuit			3	3	30
Totals	110	47	147	265	1521

WACO DISTRICT

Aquila-Hillsboro	9	1	2	11	71
Bowman-Reagan	6	1	3	10	61
Bremond Circuit	4	2	6	12	91
Calvert Circuit	5	4	5	15	118
Chilton-Mooreville			3	3	72
Cameron					
Groesbeck-Kosse	7	2	7	16	118
Hubbard-Dawson	2	1	3	6	41
Moody-Gatesville	16	3	5	24	87
Mart Circuit		3	8	11	144
Marlin		2	10	12	258
Maysfield Circuit	3		1	4	68
Rosebud Circuit	3	1		4	33
Rocky-Cedar	7	2	7	16	125
Springfield Circuit	2	2	1	5	20
Satin-Majors	7	2	4	13	96
Valley Mills	4	3	6	13	111
Waco—Bracks Chapel	15	1	3	23	103
Jones Chapel	29	2	7	38	265
Mt. Zion	35	3	7	45	255
St. James	7	7	12	26	351
Totals	155	44	100	298	2476

RECAPITULATION

DISTRICTS					
Austin	311	66	104	485	3056
Dallas	216	70	128	416	3682
San Antonio	562	48	110	592	3340
Victoria	110	47	147	265	1521
Waco	155	44	100	298	2476
Totals	1354	275	589	2056	14082

VIII. Our Honored Dead

NAME AND DATE OF DEATH	PLACE OF BURIAL	Time entered Ministry	Years in Ministry
J. B. Furgerson, Jan. 6, 1874.....	Bell County	1854	20
J. S. Stricklin, March 25, 1878.....	Girard, Kansas		1
E. S. Havens, February 29, 1875.....		1870	3
Reubin Coleman, December 3, 1875.....	Bastrop	1870	5
Isaac Wright, April 3, 1875.....	Austin	1874	2
J. G. Webster, March 14, 1877.....	Cottonwood Colony	1874	4
Ben Hoffman, February 6, 1878.....	Eagle Lake	1874	4
John Wright, January 17, 1880.....	Cottonwood Colony	1874	6
Archev Johnson, February 6, 1888.....	Giddings	1874	6
Hiram Melton, August 3, 1880.....	Limestone County	1874	6
Jacob Oakman, October 1, 1882.....	Flatonia	1872	10
Jackson Johnson, October 1, 1882.....	Manor	1875	7
Jackson Caesar, September 21, 1883.....	Wharton	1879	4
Larkin Carper, April 26, 1885.....	San Antonio	1870	15
Elijah Nesbitt, September 26, 1885.....	Sprinkle	1875	10
Caesar King, August 16, 1885.....	Georgetown	1874	11
J. W. Robinson, September 1, 1888.....	Austin	1874	11
Washington Goodwin, May 3, 1890.....	Manor	1876	14
J. H. Brawley, April 20, 1893.....	Luling	1887	6
G. W. Brothers, August 20, 1893.....	Cuero	1883	10
Toney Auyustis, June 10, 1894.....	Columbus	1879	15
J. H. Purnell, October 10, 1894.....	Waco	1890	4
J. H. Williams, October 3, 1895.....	Denison	1893	2
J. T. Gibbons, August 3, 1896.....	San Antonio	1883	13
A. L. Armstrong, September 10, 1896.....	Gatesville	1893	3
Daniel Harper, September 1, 1896.....	Victoria	1874	22
Nathan Caswell, December 20, 1896.....	Austin	1875	21
C. L. Maderson, September 16, 1900.....	Austin	1876	24
B. F. Smith, May 20, 1902.....	Cuero	1877	25
L. H. Harvey, July 4, 1902.....	Cuero	1896	6
A. S. Betheney, June 30, 1902.....	Fort Worth	1893	9
Chas. Hart, August 10, 1902.....	Winchester	1877	25
Daniel Humphrey, July 4, 1903.....	Marlin	1887	26
John Neal, March 22, 1908.....	Davilla	1894	9
Samuel Gates, February 25, 1905.....	Austin	1874	31
Anderson Brack, September 10, 1905.....	Waco	1874	31
Mack Henson, June 17, 1905.....	Austin	1874	31
Andrew Foster, November 26, 1906.....	Victoria	1880	36
James Lorman, December 9, 1908.....	Seguin	1877	29
B. L. Adams, March 19, 1908.....	Littig	1893	15
Gabriel Wilson, July 16, 1908.....	Calvert	1875	33
Thomas Watkins, April 10, 1908.....	Marlin	1886	32
Willis Graves, May 10, 1908.....	Waco	1876	32
G. A. Shanklin, December 19, 1900.....	Hubbard City	1881	19
T. T. Jacobs, March 11, 1911.....	San Antonio	1882	29
W. H. Davis, September 12, 1910.....	Seguin	1882	29
Jecerson Buel, June 10, 1910.....	Waco	1877	29
C. P. Westbrooks, December 30, 1911.....	Hubbard	1885	26
A. T. Lynch, March 18, 1911.....	Victoria	1893	18
T. W. Mitchell, December 7, 1911.....	Bremond	1878	33
R. H. Ponton, September 19, 1912.....	Belton	1882	25
M. C. Caviness, June 28, 1912.....	Lockhart	1887	25
T. H. Holden, May 1, 1912.....	Hondo	1887	25
Lee Reed, May 14, 1913.....	San Antonio	1881	25
E. E. Henderson, September 9, 1913.....	Luling	1881	32
Alfred Dickerson, June 9, 1913.....	Sprinkle	1897	26
F. L. Kirkpatrick, December 7, 1915.....	Austin	1897	18
Granville Norman	Los Angeles		7
Joseph Hariford, 1917	Victoria	1894	23
T. S. Wvatt, December 31, 1916.....	Winchester	1887	30
Christopher Young	Victoria	1875	43
G. W. Townsend, 1916.....	Victoria	1883	33
W. F. Blackson, February, 1916.....	Austin	1899	18
W. H. Mosby, 1916.....			
John Bickham, February, 1916.....	Gonzales	1891	
R. S. Lovinggood, January, 1916.....	Austin	1900	16
L. R. Parker, 1916.....	Smithville	1901	

NAME AND DATE OF DEATH	PLACE OF BURIAL	Time entered Ministry	Years in Ministry
A. T. Jackson, 1918.....	Dallas	1887	34
Ephriam Jones, April, 1918.....	Seguin		21
P. B. Bennett, 1918.....	Waco	1887	31
Riley Soda, 1918.....	Beeville		
C. C. Scruggs, 1919.....			
R. D. Dennis, 1919.....	Calvert		
A. Lockhart, 1921.....	Waco		
E. L. Jackson, 1921.....	Temple		
C. H. Franklin, 1921.....	San Antonio		
J. W. Wormley, 1921.....	Winchester		
G. W. Nevils, 1922.....	Lagrange		
Primus Gates, 1922.....	Lagrange		
A. L. Carper, 1924.....	San Antonio		
S. D. Humphrey, 1922.....	Marlin		
D. C. Hailey, 1924.....	Waxahachie		
B. J. Goff, 1925.....	Waco		
D. C. Lacy, December 25, 1925.....	Mexia		
Harry Swann, 1925.....	Victoria		
W. H. Stevens, 1925.....	Winchester		
W. H. Purnell, 1925.....	Waco		
Moses Smith, 1925.....	Austin		
Moten Lott, 1925.....	Austin		
W. M. Mooney, 1925.....	Cuero		
J. C. Mayes, 1925.....	Temple		
Albert Johnson, 1926.....	Luling		
C. N. Strait, 1927.....	Georgetown		
J. C. Eusan, 1927.....	San Antonio		
J. H. Swann, June 11, 1928.....	Yoakum		
N. H. Townsend, August, 1928.....		1893	
H. H. Oualls, June 10, 1928.....	Ennis		
S. W. Harvey, August 10, 1828.....	Waco	1881	
J. W. Wright, 1929.....		1881	
T. L. S. Edmondson, Oct. 13, 1929.....	San Antonio		
M. S. Jordan.....	Cuero		
Benjamin F. Wright, October 15, 1930.....	Fayetteville		
J. H. Hutchinson.....	Austin		
Alfred Brown, 1931.....	Shiner		
Williams Reed, 1931.....	Waco		
C. B. Melton, 1931.....	Kerrville		
George Pleasant, 1931.....			
T. W. Weakley, 1932.....	Luling		
G. M. Moten, 1932.....	Waco		
C. Schuler, 1932.....	Luling		
S. F. Jones, 1933.....	Cuero		
D. L. Mosby, 1933.....	Victoria		
I. H. Napier, 1933.....	San Antonio		
John Coe, 1933.....	Marlin		
I. E. Brown, 1934.....	Lampasas	1909	25
F. E. Cooper, 1934.....	Oakland	1888	
Enoch Cogswell, 1934.....	Mart	1887	
L. W. Roberts, 1935.....	Milford	1908	27
T. W. Stone, Jr., 1935.....	Hubbard	1916	19
C. S. Williams, 1935.....	Marshall	1903	33
T. W. Stones.....	Lockhart	1897	40
C. H. Hamilton.....	Mexia	1916	21
Geo. Waters.....	Yoakum	1898	39

X.—Conference Roll

CHRONOLOGICAL ROLL WEST TEXAS CONFERENCE

This roll carries the years of service of the men of the Conference.

Names	Relation	How Received	Year
Alexander, G. F.	Elder	On Trial	1920
Allen, E. T.	R	Credentials	1926
Allen, R. W.	Elder	On Trial	1922
Appling, R. A.	Elder	On Trial	1909
Bailey, R. R.	Elder	Transfer	1931
Baker, D. B.	Elder	On Trial	1921
Baker, W. W.	Elder	On Trial	1923
Blair, Frank	Elder	On Trial	1925
Browne, J. G.	Elder	On Trial	1906
Brown, J. H.	Elder	On Trial	1926
Bruton, T. M.	Elder	Credentials	1924
Bryant, T. H.	Elder	On Trial	1924
Burkley, M. B.	Elder	On Trial	1924
Byars, B. A.	Elder	On Trial	1920
Carrington, Charles	Elder	On Trial	1932
Carroll, D. C.	Elder	On Trial	1932
Carper, J. T.	Elder	On Trial	1907
Carruthers, J. H.	Elder	On Trial	1929
Cavett, G. V.	Elder	On Trial	1910
Childs, J. H.	Elder	On Trial	1913
Coe, James	Elder	On Trial	1914
Coe, Obie	Elder	On Trail	1924
Cook, V. A.	Elder	Transfer	1925
Deslandes, G. A.	Elder	Transfer	1917
Downs, J. W.	R	On Trial	1912
Downs, Karl	D	On Trial	1933
Dudley, J. H. R.	E	On Trial	1917
Duncan, R. H.	R	On Trial	1896
Echols, T. B.	E	On Trial	1924
Eggleston, J. B.	E	On Trial	1920
Ellison, M. C.	E	On Trial	1922
Ellison, W. M., Jr.	E	On Trial	1929
Ellison, W. M.	E	On Trial	1912
Fountain, Mumford	R	Transfer	1922
Foy, Thomas	E	On Trial	1915
Franklin, C. W.	E	On Trial	1912
Graham, S. G.	E	On Trial	1918
Grannum, S. E.	E	Transfer	1933
Greene, C. R.	E	On Trial	1920
Greer, I. C.	D	On Trial	1934
Hardemon, I. J.	E	On Trial	1911
Harrison, Henry	E	Credentials	1927
Harvey, S. N.	E	On Trial	1905
Haynes, L. L.	E	On Trial	1922
Henderson, E. C.	E	On Trial	1905
Holden, A. C.	E	On Trial	1920
Holden, A. D.	E	On Trial	1926
Holmes, Zan W.	F	On Trial	1927
Hudspeth, Francis	F	Credentials	1920
Hooev, J. N.	F	On Trial	1914
Hotchinson, F. I.	E	On Trial	1916
Hutchinson, I. W. V.	E	On Trial	1916
Tacques, A. D.	E	Transfer	1907
Jones, H. A.	E	On Trial	1904
Jones, James L.		On Trial	1937

Names	Relation	How Received	Year
Jordan, Joel S.	E	On Trial	1929
Keesee, S. A.	E	On Trial	1929
Kelley, G. W.	E	On Trial	1930
King, Irvin N.	D	On Trial	1937
Kuykendall, H.	E	On Trial	1922
Lee, B. F.	E	On Trial	1922
Lott, W. B.	E	On Trial	1900
Loud, I. B.	D	On Trial	1933
Majors, Marshall	E	On Trial	1925
Mallory, G. M.	R	On Trial	1910
Marshall, J. H.	E	On Trial	1924
Mason, A. M.	E	On Trial	1893
Maye, J. W.	E	Credentials	1920
McCutchon, H. O.	E	On Trial	1919
McKinney, H. L.	E	Restored	1926
McMillan, K. W.	E	On Trial	1900
Medlock, J. S.	R	On Trial	1900
Miles, L. W.	D	On Trial	1932
Moore, T. S.	R	On Trial	1904
Moore, J. Walt	E	Transfer	1932
Moore, N. J.	E	On Trial	1900
Mosely, W. M.	E	On Trial	1927
Mosely, S. D.	E	On Trial	1912
Muse, J. F.	E	On Trial	1911
Muse, L. E.	E	On Trial	1922
Palmer, R. L.	E	On Trial	1925
Phillips, P. H.	E	On Trial	1921
Pierce, I. H.	E	On Trial	1925
Phoenix, J. B.	E	On Trial	1924
Richardson, L. H.	R	On Trial	1893
Robinson, W. A.	E	On Trial	1932
Russell, A. G.	E	On Trial	1922
Sanford, I. T.	R	On Trial	1911
Smith, Esau	E	On Trial	1921
Sims, T. J. D.	E	On Trial	1921
Shaw, W. L.	E	Transfer	1937
Spencer, Earl L.	E	Credentials	1936
Stephens, M. W.	E	On Trial	1911
Stephens, N. W.	E	On Trial	1926
Strait, J. H.	E	On Trial	1921
Strait, L. L.	E	On Trial	1922
Tollerson, Henry	E	Restored	1929
Tucker, D. T.	E	On Trial	1927
Vance, D. F.	E	On Trial	1905
Warren, Charles	D	On Trial	1933
Warren, J. W.	E	On Trial	1904
Wattley, J. L.	E	On Trial	1920
White, W. M.	R	On Trial	1919
Whitiker, C. E.	E	On Trial	1923
Willis, H. C.	E	On Trial	1927
Wills, J. A.	E	On Trial	1925
Wvatt, M. L.	E	On Trial	1911
Wyatt, T. H.	E	Credentials	1892
Young, Fred D.	E	On Trial	1923

PROBATIONERS

Cuerington, A. M.	D	On Trial	1936
Foy, J. D.	D	On Trial	1935
Hansboro, Dale H.	D	On Trial	1937
Jackson, J. H.	L. P.	On Trial	1936
Payne, Charlemagne	L. P.	On Trial	1937

Names	Relation	How Received	Year
Pierce, Joseph	L. P.	On Trial	1936
Steward, B. F.	E.	On Trial	1936
Tatum, Elmo	L. P.	On Trial	1936
White, Saul	E.	On Trial	1937
Williams, Philip	D.	On Trial	1937

SUPPLY PASTORS

Baker, R. W.	D.	Supply	1936
Brewster, O. K.	D.	Supply	1935
Donnel, P. E.	L. P.	Supply	1937
Franklin, W. M.	L. P.	Supply	1934
North, J. N.	D.	Supply	1936
Pinkard, Nathan	D.	Supply	1932
Prince, Belt	L. P.	Supply	1937
Stevens, T. W.	L. P.	Supply	1933
Weaver, Richard	D.	Supply	1934

ROLL OF LAYMEN'S ORGANIZATION

Bailey, Mrs. M. S.	Hoyt, Mrs. C. E.	Murphy, Miss Odessa
Bivens, T. R.	Glover, Mrs. Alberta	Morris, Mrs. Fannie
Calahan, Mrs. T. C.	Johnson, C. V.	North, Mrs. R. L.
Chase, Mrs. L. W.	Johnson, Mrs. M. D.	Cooper, E. M.
Coffee, Mrs. M. D.	Kennard, Mrs. S. E.	Perkins, Mrs. S. D.
Fair, Mrs. Pear	Langram, Miss Georgie	Wagner, Mrs. M. A.
Gallaway, Mrs. A. C.	Lewis, J. W.	Wilson, A. C.
Hill, P. A.	Mackey, Mrs. O.	Williams, Mrs. C. S.
Hutchinson, Mrs. F. J.	Marshall, T. D.	

