

500
Commission On Archives And History
The United Methodist Church

JOURNAL

SIXTY-SECOND SESSION

West Texas Annual Conference

Methodist Episcopal Church

...HELD IN...

Wesley Methodist Episcopal Church

Austin, Texas

OCTOBER 14-18, 1936

BISHOP ALEXANDER PRESTON SHAW, D. D., Presiding Bishop

REV. W. W. BAKER, Secretary-Editor, Edna, Texas

REV. C. E. WHITIKER, Host-Pastor

REV. T. H. WYATT, Host District Superintendent

OFFICIAL JOURNAL

SIXTY-SECOND SESSION

..OF THE.

West Texas Conference Methodist Episcopal Church

..HELD IN..

WESLEY METHODIST EPISCOPAL CHURCH

Austin, Texas

OCTOBER 14-18, 1936

REV. W. W. BAKER, Secretary-Editor, Edna, Texas

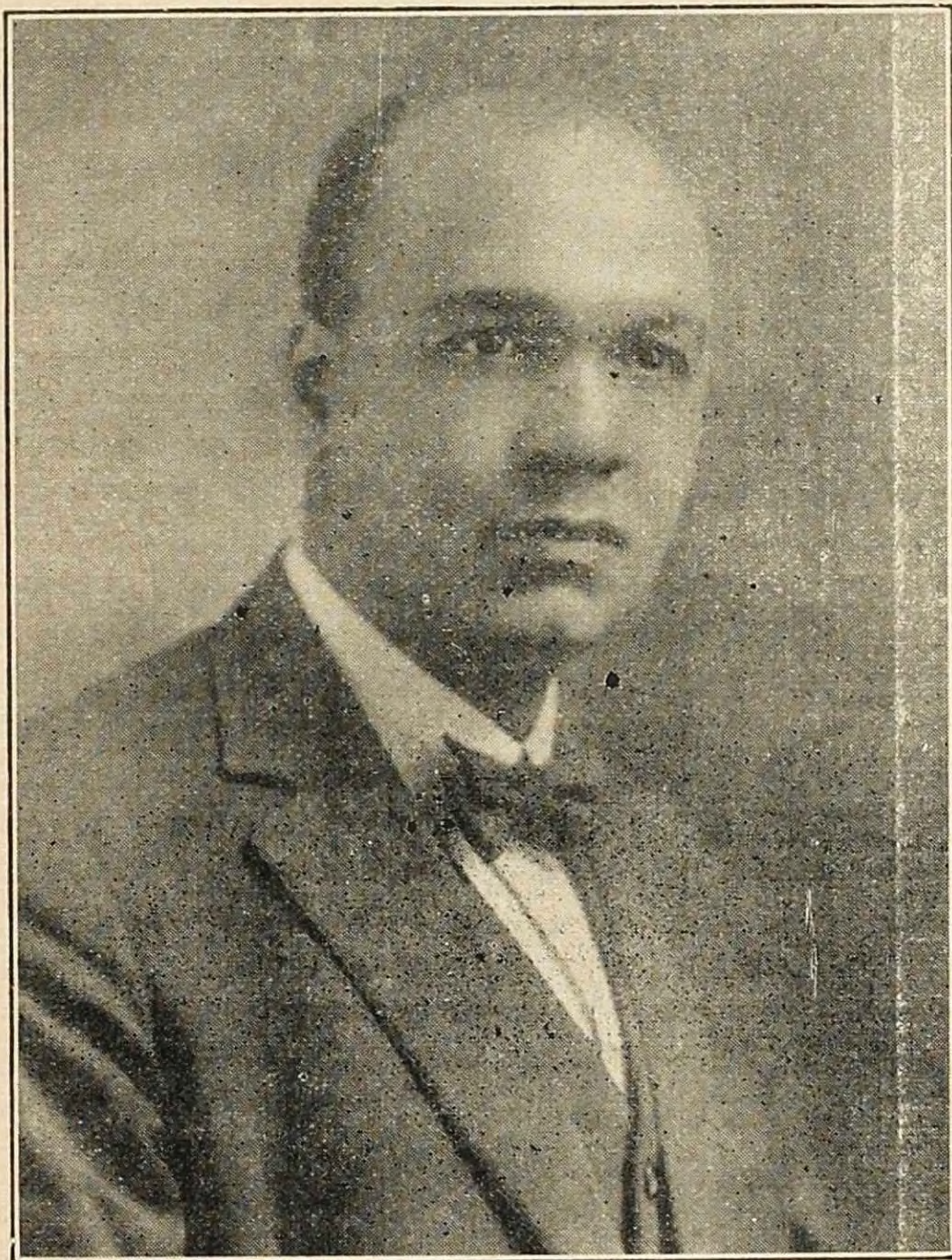
Assistant Editors: K. W. McMILLAN, W. M. ELLISON, Jr.

Publishing Board: Rev. F. D. YOUNG, Chairman; REV. J. W. WARREN, Treasurer; REV. J. B. PHOENIX, REV. H. A. JONES, REV. J. WALT MOORE, REV. S. E. GRANNUM

TABLE OF CONTENTS

— 0 —

- I—Officers of the Conference
- II—Boards, Commissions and Committees
- III—Daily Proceedings
- IV—Disciplinary Questions
- V—Appointments
- VI—REPORTS:
 - A—District Superintendents
 - B—Standing Committees and Boards
 - C—Special Committees
 - D—Conference Statistician
 - E. Conference Treasurer
 - F—Other Treasurers
 - G—Miscellaneous
- VII—Memoirs
- VIII—Roll of Deceased members
- IX—Conference Roll
- X—Historical Data



Bishop A. P. Shaw, D. D., LL. D.

The above is the likeness of Bishop A. P. Shaw, D. D., LL. D., Resident Bishop of the New Orleans Area, and President of the Sixty-Second annual session of the West Texas Conference. Bishop Shaw was elected in May at Columbus, Ohio, 1936. He was almost the unanimous choice after several ballots for a Negro General Superintendent were cast. He comes into the Episcopacy with wide experience, both as pastor and editor. Having served fourteen years at the Great Wesley Church, Los Angeles, California, and five years as editor of the Christian Advocate, Southwestern Edition.

Part I

OFFICERS:—

President:—Bishop A. P. Shaw, D. D., New Orleans, Louisiana

Secretary:—Rev. W. W. Baker Edna, Texas

Assistants:—K. W. McMillan, W. M. Ellison, Jr.

Statistician:—Rev. J. A. Wills, Mexia, Texas

Assistants:—Obie Coe, Joel Jordan, F. M. Hudpseth, I. B. Loud, J. F. Muse, W. A. Robinson.

Treasurer:—Rev. C. E. Whitiker, Austin, Texas.

Assistants:—A. D. Jacques, Zan W. Holmes, J. J. Hardemon, Charles Carrington, G. A. Deslandes.

Part II

BOARDS—COMMITTEES—COMMISSIONS:—

Deaconess Board:—C. E. Whitiker, Chairman;
T. H. Wyatt, J. W. Warren, Mrs. D. N. Swann,
G. A. Deslandes, H. A. Jones, R. W. Allen,
L. L. Haynes, Miss V. M. Souders,
Mrs. M. M. Sanford.

BOARD OF STEWARDS:—

1937 First Year:—T. H. Wyatt, J. H. Carruthers, M. L. Wyatt, Fred Young.

1938 Second Year:—C. E. Whitiker, J. G. Browne, W. C. Burgess, T. W. Swanson.

1939 Third Year:—G. A. Deslandes, J. H. R. Dudley, F. J. Hutchinson, W. B. Lott.

CLASSES AND YEARS OF STUDY BOARD OF MINISTERIAL TRAINING WEST TEXAS CONFERENCE

FIRST YEAR STUDENTS:—

Bircho Bateman, A. M. Cuerington, J. H. Jackson, B. F. Stewart, Elmo Tatum.

SECOND YEAR STUDENTS:—

James L. Jones, James D. Foy, Ervin N. King.

THIRD YEAR STUDENTS:

Earl L. Spencer

FOURTH YEAR STUDENTS:—

Karl Downs, I. C. Greer, I. B. Loud, L. W. Miles, Charles Warren.

ARRANGED LIST OF EXAMINERS

FIRST YEAR:—

J. H. R. Dudley, L. L. Haynes.

SECOND YEAR:—

T. B. Echols, J. B. Phoenix.

THIRD YEAR:

J. Walt Moore, H. O. McCutchon.

FOURTH YEAR:—

C. E. Whitiker, S. E. Grannum.

ADMISSION ON TRIAL:—

K. W. McMillan, W. M. Ellison, Jr., Zan W. Holmes.

SIGNED:—K. W. McMillan, Chairman
T. B. Echols, Registrar

--

PUBLISHING BOARD:—

F. Young, Chairman; W. W. Baker, Secretary; K. W. McMillan, Asst. Secretary; J. W. Warren, Treasurer; H. A. Jones, J. B. Phoenix, S. E. Grannum, J. Walt Moore, W. M. Ellison, Jr., Asst. Secretary.

HOME MISSIONS:—

T. H. Wyatt, C. E. Whitiker, S. E. Grannum, J. H. R. Dudley, J. Walt Moore, R. W. Allen, L. D. Lyons, S. N. Harvey.

TRUSTEES:—

T. H. Wyatt, Fred Young, J. B. Phoenix, J. W. Warren, H. A. Jones, C. E. Whitiker, Zan Holmes, K. W. McMillan, G. A. Deslandes.

INSTITUTE COMMISSION:—

T. B. Echols, L. L. Haynes, C. E. Whitiker, Mrs. R. H. Duncan, Joel Jordan, J. H. Carruthers, J. H. R. Dudley, and District Supts.

AREA LAY COMMISSION:—

S. E. Grannum, J. L. Wattley, T. H. Foy.

STANDING COMMITTEES

AUDITING:—

J. H. Childs, J. H. R. Dudley, R. W. Allen, Joel Jordan.

BONDING:—

T. H. Wyatt, J. W. Warren, H. A. Jones, Fred Young, J. B. Phoenix, J. Walt Moore.

CHURCH LOCATION:—

District Supts., L. L. Haynes, W. M. Ellison, S. D. Moseley, J. H. Strait,

EDUCATION AND CHURCH SCHOOLS:—

S. E. Grannum, T. B. Echols, J. H. Marshall, D. B. Baker, G. A. Deslandes, J. B. Phoenix, B. F. Lee.

EPISCOPAL FUND:—

L. L. Haynes, George Waters, Fred Young, C. R. Greene, W. M. Ellison, Jr., J. W. Warren, I. H. Pierce, S. G. Graham.

EPWORTH LEAGUE:—

Zan Holmes, Obie Coe, I. B. Loud, A. D. Jacques, G. F. Alexander, H. E. Kuykendall, J. H. Marshall.

EVANGELISM:—

R. W. Allen, Fred Young, T. H. Bryant, R. A. Appling, R. L. Palmer, A. G. Russell, J. J. Hardemon, Sam Graham, T. H. Foy, J. B. Eggleston.

GULFSIDE:—

T. B. Echols, A. G. Russell, G. A. Deslandes, K. W. McMillan, T. H. Wyatt, H. A. Jones, J. W. Warren, J. B. Phoenix, R. W. Allen, J. H. Carruthers.

LADIES AID SOCIETY:—

A. M. Mason, R. L. Palmer, Dee Tucker, G. F. Alexander, T. J. D. Simms, C. H. Hamilton.

MEMOIRS:—

J. W. Mayes, J. H. Childs, A. M. Mason, W. B. Lott, A. D. Jacques, S. G. Graham, J. J. Hardemon, George Waters.

MINIMUM SALARY:—(Special)

R. W. Allen, G. W. Smith, L. L. Haynes, R. O. Rucker, G. A. Deslandes, E. M. Cooper, M. C. Ellison, Mrs. D. N. Swann, Zan Holmes, J. S. Henry.

PENSION AND RELIEF:—(Special)

C. E. Whitiker, J. M. Frasier, D. B. Baker, Mrs. M. T. Reed, W. B. Lott, Wm. L. Hegwood, W. W. Baker, S. R. Grant, L. E. Muse, Catherine Seago.

PERIODICALS:

F. M. Hudspeth, J. B. Eggleston, C. H. Hamilton, A. M. Mason, B. A. Byars, R. L. Palmer, S. G. Graham.

PROHIBITION:—

R. A. Apling, A. D. Jacques, Zan Holmes, Frank Blair, G. V. Cavitt, G. W. Kelley, F. M. Hudspeth.

PUBLIC WORSHIP:—

J. Walt Moore, Zan Holmes, L. E. Muse, J. G. Browne, H. E. Kuykendall, J. S. Henry, Mrs. M. M. Sanford, Mrs. Crane, Mrs. Perkins, Mr. Bates.

REFERENCE:—

T. H. Wyatt, G. A. Deslandes, J. W. Warren, M. L. Wyatt, Joel Jordan, D. B. Baker, M. W. Stephens, J. H. Strait.

CONFERENCE RELATIONS

K. W. McMillan, Chairman

F. J. Hutchinson, Secretary

TERM EXPIRES 1937:—

T. H. Wyatt, R. W. Allen, A. G. Russell, M. L. Wyatt.

TERM EXPIRES 1938:—

C. E. Whitiker, L. L. Haynes, W. B. Lott, L. E. Muse.

TERM EXPIRES 1939:—

K. W. McMillan, F. J. Hutchinson, W. M. Ellison, J. H. Childs, J. H. R. Dudley.

RESOLUTIONS:—

J. W. Mays, H. O. McCutchins, S. D. Moseley, B. F. Lee, T. H. Bryant, S. A. Keesee.

SABBATH OBSERVANCE:—

C. W. Franklin, J. J. Hardemon, D. F. Vance, J. G. Browne, I. H. Pierce, J. N. Hooey.

SAM HUSTON COLLEGE:—

S. E. Grannum, T. H. Wyatt, L. L. Haynes, S. L. Brown, Mrs. J. D. Martin.

STATE OF THE CHURCH:—

S. E. Grannum, T. B. Echols, A. D. Jacques, J. H. Strait, J. W. Warren,
W. M. Mosely.

TRIERS OF APPEALS:—

G. A. Deslandes, Zan Holmes, L. L. Haynes, T. H. Wyatt, K. W. McMil-
lan; RESERVES:—H. O. McCutchin, J. H. R. Dudley.

W. H. M. SOCIETY:—

Joel Jordan, T. H. Bryant, G. F. Alexander, Miss V. M. Souders.

W. F. M. SOCIETY:—

B. F. Lee, R. R. Bailey, J. N. Hooey, Mrs. C. S. Williams, G. A. Des-
landes.

HOSPITALS:—

S. N. Harvey, Henry Harrison, J. H. Strait, W. M. Ellison, Jr., H. C. Wil-
lis, P. H. Philips, L. L. Strait.

Part III

Daily Proceedings—First Day

AUSTIN, TEXAS, October 14, 1936.

OPENING—The West Texas Conference of the Methodist Episcopal Church convened in its sixty-second session in Wesley Church, Austin, Texas, Wednesday morning October 14th, 1936 at nine-thirty o'clock with Bishop A. Preston Shaw in the chair.

DEVOTIONS—Bishop Shaw had charge of the devotional exercise. He announced the hymn: "O Thou in whose presence," etc., which was sung with much interest by the conference. Dr. T. H. Wyatt led the conference in prayer. Following the prayer, the conference joined in singing: "There is a Fountain filled with Blood," etc.

The Bishop gave a brief review of his life's experience and followed these words by reading Romans 12th chapter as the morning scripture lesson and made helpful comments on the same.

COMMUNION SERVICES—Bishop Shaw assisted by the District Superintendents of the conference and the pastor of Wesley, administered the elements to more than 350 persons. T. B. Echols was asked by the Bishop also to assist in this service. The choir of Wesley furnished appropriate music for this service.

WELCOME PROGRAM—A brief welcome was extended Bishop Shaw following the Communion service with C. E. Whitiker in charge. The conference sang fervently the hymn: "Blest be the tie that binds," etc. L. L. Haynes led the conference in prayer. S. E. Grannum gave the address of welcome to Bishop Shaw. C. E. Whitiker followed this address with remarks of historic interest touching the work and organization of the conference, and presented the Bishop a gavel made of timbers from the old Historic Wesley where the West Texas Conference was organized in 1874.

ACCEPTANCE—The Bishop accepted in coveted words this presentation and expressed his admiration for Wesley and the great congregation that constitute the membership. Mrs. Thelma Slider sang: "My Task."

HONORABLE L. D. LYONS was presented and in turn introduced Mayor Tom Miller of Austin, who gave the address of welcome to the conference. Bishop Shaw gave the response in a very cordial manner.

MEMORIAL SERVICES was announced for a later hour than scheduled. and Bishop Shaw asked W. W. Baker, the Secretary of the last conference to call the roll. One hundred and five men responded to their names.

ORGANIZATION—The call for elections was made, and upon motion of H. A. Jones and seconded by several men of the conference, W. W. Baker was re-elected Secretary and permitted to name his assistants. Upon his nomination, K. W. McMillan and W. M. Ellison, Jr., were named and confirmed by the vote of the conference.

On motion of F. D. Young, J. A. Wills was elected Statistical Secretary and upon his nomination the following assistants were named and confirmed: Obie Coe, W. A. Robinson, Joel Jordan, F. M. Hudspeth, J. F. Muse, I. B. Loud.

On motion of T. H. Wyatt, C. E. Whitiker was reelected Treasurer, and by vote of the conference he named the following as his assistants: A. D. Jacques, G. A. Deslandes, Charles Carrington, Zan Holmes, J. J. Hardemon.

On motion of J. W. Warren, T. B. Echols was elected Reporter to the secular and church papers.

On motion of G. A. Deslandes, the bar of the conference was fixed within the bounds of the third window from the platform.

T. H. Wyatt read the list of standing Boards and Committees as nominated by the cabinet, and with few changes the list was approved by vote of the conference. See List as published.

On motion of J. W. Warren the printed program was adopted as the program of the conference.

MEMORIAL SERVICES began at 12:30 p. m. with singing: "Servant of God well done," etc. The Committee reported no deaths among the ministers, but the following women of the parsonages had fallen: Mrs. F. L. Kirkpatrick, Mrs. T. J. D. Sims, Mrs. Mack Henson.

K. W. McMillan was asked to lead the conference in prayer. "Does Jesus Care" was sung feelingly as the conference bowed in grief with the mourners.

J. W. Warren was presented and brought the memorial message from the text: "She has done what she could." This sermon was followed by singing: "He never has left me alone."

Mrs. M. K. Davis sang beautifully to the memory of her mother: "When I have done the best I can," etc. Thus closed the memorial services.

Announcements were made,—a session called for 3:00 p. m.

J. H. Childs pronounced the benediction.

A. P. SHAW, President

W. W. BAKER, Secretary

First Day—Afternoon

The conference was reassembled at 3 p. m. with T. H. Wyatt in charge of the devotions.

Bishop Shaw urged the pastors to give proper attention to the making of reports and gave forms for the making of reports.

AUSTIN DISTRICT was called, T. H. Wyatt was passed in character and reported the work of the District as Supt. (See report)

The Effective Elders of the Austin District were called and passed an character as follows:—D. F. Vance, R. W. Allen, F. J. Hutchinson, J. N. Hooey, S. N. Harvey, A. D. Jacques, G. W. Kelley, R. A. Applng, B. A. Byars,—they reported for their respective charges.

DALLAS DISTRICT was called. F. D. Young was passed in character and

reported the work of the Dallas District as Supt. (See report)

The following Effective Elders of the Dallas district were called, passed in character and reported for their charges:—M. B. Burkley, J. H. Childs, L. L. Haynes, J. H. R. Dudley, I. H. Pierce, F. L. Blair, J. G. Browne, Henry Harrison, C. R. Greene, K. W. McMillan, D. B. Baker, J. A. Wills, J. H. Brown, B. F. Lee, G. V. Cavitt.

Bishop Shaw asked T. H. Wyatt to take the chair. Remarks made and the benediction was given by L. L. Haynes.

A. P. SHAW, President

W. W. BAKER, Secretary

Second Day—Morning Session

Bishop Shaw assembled the conference at 9 a. m. The conference was asked to sing: "My faith looks up to Thee," etc. C. W. Franklin led the conference in prayer.

The Bishop read the scripture, John 1:1-13. He addressed the conference and gave a helpful address based on the same scripture. Encouraging those who had accepted Him as children of His.

LAYMEN MEETING was announced and they were excused from the regular session for their meeting at 11 a. m., A. C. Wilson directing.

THE JOURNAL of the previous sessions was read and approved with one or more minor corrections.

SAN ANTONIO DISTRICT was called. J. B. Phoenix was passed in character and read his report. (See report)

The following Effective Elders of the district were called, passed in character and reported the work of their charges:—J. W. May, R. L. Palmer, C. W. Franklin, J. F. Muse, W. M. Mosely, M. L. Wyatt, H. O. McCutchins, W. M. Ellison, W. M. Ellison, Jr., H. C. Willis, M. W. Stephens, N. W. Stephens, A. M. Mason, G. F. Alexander, J. J. Hardemon, G. A. Deslandes, W. B. Lott, J. Walt Moore.

VICTORIA DISTRICT was called. H. A. Jones was passed in character and reported the work of the district. (See report)

The Effective Elders of the district were called, passed in character and reported the work of their charges:—A. C. Holden, Obie Coe, L. L. Strait, M. C. Ellison, T. H. Bryant, A. G. Russell, J. H. Strait, George Waters, W. W. Baker.

UNITED SESSION

The Bishop announced that at 11 a. m. we are in United session of the conference.

QUESTION ONE was called. The secretary reported as follows: E. M. Cooper as President; Mrs. C. S. Williams, Secretary; and the roll of delegates enrolled as follows: (See roll elsewhere in the printed journal.)

A. C. Wilson was invited to the platform for this session.

QUESTION TWO was called. The report was made that there are no bonded officers, but plans being made for such, T. H. Wyatt looking after the same.

K. W. McMILLAN moved that \$25.00 be raised for bonding expense, the same to be apportioned to the districts at \$5.00 each. This motion prevailed.

QUESTION THREE was called. The report was that 649 Units of the Mil-

lion Unit Fellowship Movement be allotted to the West Texas Conference. On motion of K. W. McMillan this report was adopted by the conference.

S. E. Grannum called attention to the small salaries received by pastors and urged that matters so serious would claim our attention as a conference of Laymen and Ministers.

A Special Commission was raised to report on the same during our next session of the conference. (See report and names of commission)

INTRODUCTIONS WERE GIVEN.—The following persons were introduced to the conference:—J. P. Brawley, Clark University; W. H. Hightower, Marshall, Texas; J. L. Parks, A. M. E. Church; F. D. Mayes, Texas Conference; V. L. Hightower, Texas Conference; F. D. Moore, A. M. E. Church; J. B. F. Shaw of Los Angeles, California; Carl W. Bergquist of the Swedish Conference; Robert Weldon of Brenham, Texas, M. E. Church South.

COLLECTION was taken for song books to the amount of \$3.45.

F. D. Mayes was asked by Bishop Shaw to lead in singing: "I Will Go." This message in song was entered into with enthusiasm by many men of the conference.

ANNOUNCEMENTS were given, and the benediction was pronounced by J. W. Lanham.

A. P. SHAW, President

W. W. BAKER, Secretary

Second Day—Afternoon

Bishop Shaw called the conference to order at 2:30 p. m. L. E. Muse had charge of the devotions. The Bishop followed the devotions with a brief address on "Building a Credit" and emphasized the Million Unit Fellowship Movement. Dr. Lanham of the Board of Foreign Missions was introduced and spoke on: "The Million Unit Fellowship." He spoke particularly of India's needs and gave much insight to the customs of the people of this Foreign field.

DR. W. A. C. HUGHES was introduced and warmed our hearts as he made his representation of the Board of Home Missions and its relation to the Million Unit Fellowship Movement"—reciting particular experiences that have been his with people in the Southern Plantations and their interest in the Negro Life. The conference was held in rapt attention as these men spoke with us by the way.

SUBSCRIPTIONS taken. Seventy-five Units were immediately subscribed following the appeal made for the Boards of Foreign and Home Missions. (See Record of same)

CONSECRATION HOUR WAS HAD. Dr. Lanham gave us a chance to come to the Altar for renewed consecration for the task of building this "Million Unit Fellowship." Each man felt that in this service he had a chance to get a better and more perfect glimpse of God and what he would have us do on the fields. The conference sang fervently: "Lord, I want to be a Christian" etc. Bishop Shaw led the conference in prayer.

ANNOUNCEMENTS were made. The Benediction given by Dr. W. A. C. Hughes.

A. P. SHAW, President

W. W. BAKER, Secretary

Third Day—Morning Session

Bishop Shaw reassembled the conference promptly at 9 o'clock with T. H. Wyatt in charge of the devotions. C. R. Greene and S. N. Harvey led the conference in prayer.

MORNING MESSAGE was given. Bishop warmed our hearts and gave new vision for the task of the church as he spoke with us on the topic: "Christianity as a system of Life." He based his argument on Phil. 2:1-11. He stressed Harmony, Winning your people by love, and Preaching.

The conference closed the devotional period by singing: "O, Thou in whose presence," etc.

JOURNAL of the previous sessions was read and approved. The Bishop announced a check from the Chartered Fund for \$65.00 which was ordered turned to the Secretary and Treasurer for endorsement. Announcement was made that other monies had been sent by the Board of Pensions that had not been received to this date of the session. (See report)

F. D. YOUNG turned over to T. H. Wyatt \$5.00 from the Dallas District as the quota for the Dallas district on bonding officers.

WACO DISTRICT was called. J. W. Warren was passed in character and reported the work of the District. (See report)

EFFECTIVE ELDERS of the Waco District were called; they were passed in character and reported the work of their charges as follows:—Esau Smith, J. H. Marshall, P. H. Philips, R. R. Bailey, F. M. Hudspeth, S. D. Mosely, A. D. Holden, N. J. Moore, Dee Tucker, S. A. Keesee, T. J. D. Sims, J. B. Eggleston, L. E. Muse, H. E. Kuykendall, T. H. Foy, Zan Holmes, S. G. Graham.

SAM HUSTON COLLEGE RALLY was announced. The President with his faculty, student body were all present for this occasion. They yelled, they spoke, they talked, they raised money.

T. B. ECHOLS offered a motion to postpone the vote on Unification till the afternoon session in order that we might give this hour to the college rally. This motion prevailed.

Bishop Shaw invited S. E. Grannum to take charge of the program and rally for the morning.

The following order for the morning was observed by the College:—Song by the student body; Address by Dean R. B. Hayes; and then followed singing by the students.

The following persons spoke and were introduced:—J. L. McNeely, Brice Taylor, T. P. Brawley and Bishop Shaw. The offering was taken, Bishop leading with \$10.00. The Districts were called and \$476.00 was raised at this time. The amount raised at night gave a general total of about \$600.00.

INTRODUCTIONS were given as follows:—J. W. Golden, Miss Muriel Day, M. L. Harris, W. T. Handy, W. P. Cain, S. L. Brown, Prof. Travis of Austin.

ANNOUNCEMENTS were given and Dr. J. W. Golden gave the benediction.

A. P. SHAW, President

W. W. BAKER, Secretary

Third Day—Afternoon

The Bishop called the conference to order at 3 p. m.—T. H. Foy had charge of the devotions. We sang: "Majestic sweetness sits enthroned" with meaning

and feeling. J. H. Childs and G. V. Cavitt led the conference in prayer.

UNIFICATION—The hour came for the vote on Unification. A motion was offered to adopt the Plan. Much discussion ensued in this matter. The following men spoke on the subject:—Against: T. B. Echols, J. L. Wattley, J. Walt Moore. For the Plan:—T. H. Wyatt, C. E. Whitiker, S. D. Mosely.

K. W. McMILLAN moved the previous question. The call was made, and the vote taken as follows:—For: 37; Against: 45. The Bishop announced the vote as taken.

A. C. Wilson was called and the secretary Mrs. C. S. Williams announced the results of the layman ballot: For the Plan 56; Against the Plan, None.

FORUM HOUR arrived and W. T. Handy of New Orleans spoke on the topic: "Financing and Advertising" in the church. He spoke interestingly of his own methods at Mt. Zion and distributed copies of his plan and methods.

Many questions were asked of Rev. Handy and after much debate and the relating of experiences, the conference introduced the Rev. C. C. Reed of the Baptist Church, Austin, Texas.

Announcements were given, the Benediction pronounced by W. T. Handy.

A. P. SHAW, President

W. W. BAKER, Secretary

Fourth Day—Morning Session

Bishop called the conference to order at 9 o'clock. S. N. Harvey led the conference devotions. C. R. Greene led the conference in prayer.

JOURNAL of the previous session was read and approved with minor corrections.

QUESTION FIFTEEN was called. On motion of K. W. McMillan, J. D. Mackey was re-admitted. (West Texas 1929.)

QUESTION TEN was called and on recommendation of the committee on Conference Relation, Earl Spencer was received on his credential from the C. M. E. and placed in the studies of the Third Year.

QUESTION SEVENTEEN was called. On recommendation of the District Supts. and the committee on Conference Relation, the following men were received on Trial and placed in the studies of the First Year:—Birrho Bateman, A. M. Cuerington, J. H. Jackson, B. F. Stewart, Elmo Tatum.

On motion of K. W. McMillan, Bishop Shaw was asked to give B. F. Stewart new Credentials since, this conference misplaced his of former years. This motion prevailed.

QUESTION EIGHTEEN was called. On motion of K. W. McMillan, J. L. Jones, J. D. Foy and E. N. King were passed in character and advanced to the studies of the Second Year.

On motion of K. W. McMillan, Karl Downs, Charles Warren, I. C. Greer, I. B. Loud and L. W. Miles were passed in character and advanced to the studies of the Fourth Year.

QUESTION NINETEEN was called. On motion of K. W. McMillan representing the Committee on conference relations, C. E. Connor was discontinued having been in the conference course of study ten years without having completed the same.

Bishop Shaw read a telegram from the Board of Pensions with reference to drafts that had been sent to the conference.

QUESTION TWENTY was called. On motion of K. W. McMillan, Earl Spencer was received into Full Membership.

QUESTION TWENTY-TWO was called. On motion of the Board of Examiners Karl Downs, Charles Warren, I. C. Greeg, I. B. Loud and L. W. Miles were placed in the studies of the Fourth Year.

QUESTION TWENTY-THREE was called. On motion of K. W. McMillan representing the Board of Examiners and the committee on Conference relations, D. C. Carroll and Z. E. King were graduated from the Course of study and elected to Elders Orders. Charles Carrington having been previously recommended for Elders Orders was included in the class for ordination at this conference.

QUESTION TWENTY-FOUR was called. On recommendation of the Board of Examiners and the Committee on Conference Relation the following men were elected to Deacons orders:—Birtho Bateman, A. M. Cuerington, J. W. Morgan, J. N. North.

QUESTION TWENTY-FIVE was called. On motion and recommendation of the Committee on Conference Relation and the Board of Examiners R. W. Baker was elected to Elders Orders.

QUESTION FORTY was called. On motion of K. W. McMillan, representing the Committee on Conference Relations, L. H. Richardson was voted the Retired relation. The following men were continued on the retired list: E. T. Allen, J. T. Carper, James Coe, J. W. Downs, R. H. Duncan, Mumford Fountain, E. C. Henderson, G. M. Mallory, J. S. Medlock, T. S. Moore, I. T. Sandford, J. W. Stone, W. M. White.

QUESTION TWENTY-SIX was called. On motion of the Chairman of the Board of Examiners and the Committee on Conference Relation the following men were left without appointments to attend some one of our schools:—Charles Carrington, Karl Downs, J. D. Foy, Charles Warren, J. H. Jackson, Elmo Tatum.

QUESTION TWENTY-SEVEN was called. This was answered Yes. Which was strictly done in open conference session.

QUESTION TWENTY-EIGHT was called. The following men were accepted as Supply Pastors:—Jack Caesar, J. N. North, J. M. Morgan, T. W. Stephens, Richard Weaver.

QUESTION TWENTY-NINE was called. The following men in the studies of the First Year:—J. N. North, J. M. Morgan, Richard Weaver.

Jack Caesar and T. W. Stephens were in the studies of the second year.

QUESTION THIRTY was called. The Bishop announced the transfer of Willis J. King to the Texas Conference.

QUESTION THIRTY-FOUR was called. Marcus Freeman was reported as having withdrawn from the membership and ministry of the church.

QUESTION THIRTY-FIVE was called. Marcus Freeman was reported as having withdrawn under charges or complaints.

QUESTION THIRTY-SEVEN was called. On motion of the Committee on Conference Relation, Henry Tollerson was continued in the supernumerary relation and requested to locate at the next conference.

On motion Zebra King was granted the Supernumerary Relation.

T. B. ECHOLS was called by Bishop Shaw to the Platform and was in

charge of the program of Religious Education. He gave the address and after singing, Charles Carrington spoke on the subject: "What I, as a youth, owe to the Church." Miss Freddie Lucile Young read a paper on the subject: "Some Convictions of Youth."

Prof. Echols emphasized the Four cardinal points in carrying on in the field of education as follows: "Agonize, Organize, Advertise and Spiritualize. Mrs. T. B. Echols presided at the piano on this occasion. Dr. Echols paid a high tribute to Mrs. Echols in her sacrifices in order that he might carry on.

QUESTION FORTY-TWO was called. The Bishop announced the Triers of Appeals as follows:—G. A. Deslandes, Zan Holmes, L. L. Haynes, T. H. Wyatt, K. W. McMillan. RESERVES:—H. O. McCutchin, J. H. R. Dudley. The same was approved by the Conference.

INTRODUCTIONS:—L. J. Rhone, Printer of Waco was introduced to the Conference and welcomed by the same.

ANNOUNCEMENTS were given and the Benediction pronounced by Dr. J. B. F. Shaw.

A. P. SHAW, President

W. W. BAKER, Secretary

Fourth Day—Afternoon

Bishop Shaw called the conference to order at 3 p. m.—T. H. Wyatt had charge of the devotions.

ROLL OF RETIRED MEN was called and they were passed in character and made reports for themselves and their efforts as follows:—J. W. Downs, M. Fountain, E. C. Henderson, I. T. Sanford. Rev. Sanford was asked by the Bishop to lead in singing: "Preach the Word," etc.

James L. Jones, E. N. King were passed in character and reported the work of their charges.

Karl Downs, Charles Warren, were passed in character and sent a donation of \$10.00 to help them along in school.

I. C. Greer, I. B. Loud, L. W. Miles, Charles Carrington were passed in character and made reports of their work.

The following Supply Pastors were passed in character and reported their work:—W. M. Franklin, Jack Caesar, T. W. Stephens, Richard Weaver. Mrs. V. M. McCoy Lott, was passed in character.

B. F. Stewart was passed in character as well as R. W. Baker, and they reported as supply pastors.

QUESTION FORTY-ONE was called. On motion of T. H. Wyatt the Triers of Appeals was approved as read. (See list)

QUESTION FORTY-NINE was called. St. James Waco extended an invitation to the conference to hold its next session there. This vote was taken and St. James was made the unanimous choice for the conference in 1937.

K. W. McMILLAN offered a motion that the Entertaining church provide entertainment for ministers and wives and widowed women and such other delegates as come at the accustomed rate of registration, but it shall fix its own rate of entertainment for other visitors to the conference. This motion was adopted.

BOARD OF STEWARDS:—J. J. Hardemon read the report of the Board of

Stewart and on motion of A. D. Jacques it was adopted. (See report)

Bishop Shaw exhorted the conference to take more seriously the matter of funds for conference. Claimants—and even preachers when need is felt in so great a matter.

PENSIONS AND RELIEF reported. C. E. Whitaker read the report on Pensions and Relief which was approved by the conference.

A. C. Wilson read a resolution for the Lay Association touching the report of Pension and Relief, this report was adopted. J. B. Phoenix spoke in an interesting way on this matter of support for Conference Claimants.

STATISTICAL REPORT READ—J. A. With read the report as Statistician. This report was adopted. (See report)

TREASURER REPORT—C. E. Whitaker read the Treasurer's report which was adopted. (See report)

AUDITING COMMITTEE—J. H. Childs reported as chairman of the Auditing Committee. This report was adopted. (See report)

SAM HUSTON COLLEGE—L. L. Haynes read a report in the interest of larger support for the College. This report fixes as a conference collection of \$3000.00. (See report) \$3000, of this amount to be raised on Lincoln's birthday.

L. L. Haynes offered a motion that reports of all standing committees be passed in, filed for record without reading. This was adopted. The following passed in reports:—Minimum Salary; Hospitals and Homes, Epworth League; Education; Conference Relations; Sabbath Observance; Prohibition; Ladies Aid Society; W. H. M. Society; W. F. M. Society; and Youths Council.

Mrs. C. S. Williams read resolutions from the W. F. M. Society which were adopted. (See report)

On motion of K. W. McMillan, P. E. Donnell was recognized as a Local Deacon from the Missionary Baptist Church.

On recommendation of the Committee on Conference Relation and E. W. was elected to Elders Orders.

McMillan, Turner Snow was recognized as an Elder from the A. M. B. Church.

On recommendation of the Committee on Conference relation, R. W. Baker

J. W. Warren read a letter of appreciation to Bishop Shaw for his administration in this conference and the work that he is carrying on. This report was adopted. (See report)

T. B. Echols gave the summary of amounts from the conference in support of the work of Religious Education:

Austin District	\$ 23 00
Dallas District	38 00
San Antonio District	50 00
Victoria District	2 00
Waco District	20 00

TOTAL \$233 00

On motion of J. H. Childs, W. W. Baker was elected Editor-Publisher with his staff as Assistants and the Cabinet along with these as Publishing Board. This motion was adopted.

On motion of H. A. Jones, J. W. Warren was elected Treasurer of the Conf.

On motion of T. H. Wyatt, the minutes are to contain a ministerial conference minute fund.

of the ministers of the conference, giving the number of years in the service of the ministry.

On motion of J. W. Warren the West Texas Conference voted to be a sponsor of the Society of the Prevention of Crime—as lead by Dr. J. B. F. Shaw, and meet its requirements by paying \$25.00 to Dr. Shaw.

At this time Bishop Shaw sang his favorite “Some Day” and we were stirred as he sang in this closing hour’s business session.

W. A. Robinson was presented and spoke of the work at Gulfside and urged that we continue our interest in the same.

Announcements were given, the benediction was pronounced by Bishop Shaw.

A. P. SHAW, President

W. W. BAKER, Secretary

Fifth Day—Morning Session

Sunday School opened at 9:30 a. m. with Supt. Brown and Wilson and Cooper in charge.

The Bishop brought the conference message at 11 a. m. He was at his best in this message. Did our heart burn? We were carried to lofty heights as he spoke with us at this hour.

ORDINATION SERVICES—A. D. Holden gave the Ordination sermon at 3 p. m. St. James Choir of Waco had charge of the singing. Holden preached “The Great Commission.” This was a veritable mountain top experience for us.

BISHOP SHAW at 3:30 ordained the following men as Deacons: Birtho Bateman, A. M. Cuerington, J. N. North, J. W. Morgan.

In the same service the Bishop ordained the following men as Elders: R. W. Baker, D. C. Carroll, Charles Carrington, Zebra King.

TEMPERANCE NIGHT—At 7 p. m. Miss Muriel Day was presented and spoke in this closing service. K. W. McMillan was the speaker for the Board of Temperance. He called to himself T. B. Echols and J. B. F. Shaw who gave interesting message in the interest of the cause of Temperance. The St. James Choir was still in charge of the music.

BISHOP SHAW called the conference to order at 9 p. m. and after the devotions and reading of resolutions he concluded the few business items.

On motion of G. A. Deslandes, Charles Carrington and Earl Spencer were received into full membership.

The Committee on Conference Relations referred to its final report which was adopted. (See report)

On motion of C. E. Whitiker the conference voted as a quota for Gulfside the sum of \$500.00.

T. B. Echols reported that a Memorial be sent to the Secretary from the Council of Youth. Carried.

The Conference voted a quota of \$318.75 to each district for the support of Conference Claimants.

On recommendation of the Cabinet the conference voted that Bishop Shaw appoint S. G. Graham as Conference Evangelist. Carried.

The Conference voted and raised a commission on minimum salary for

ministers. This motion fixes one laymen and one minister from each district. (See Committee)

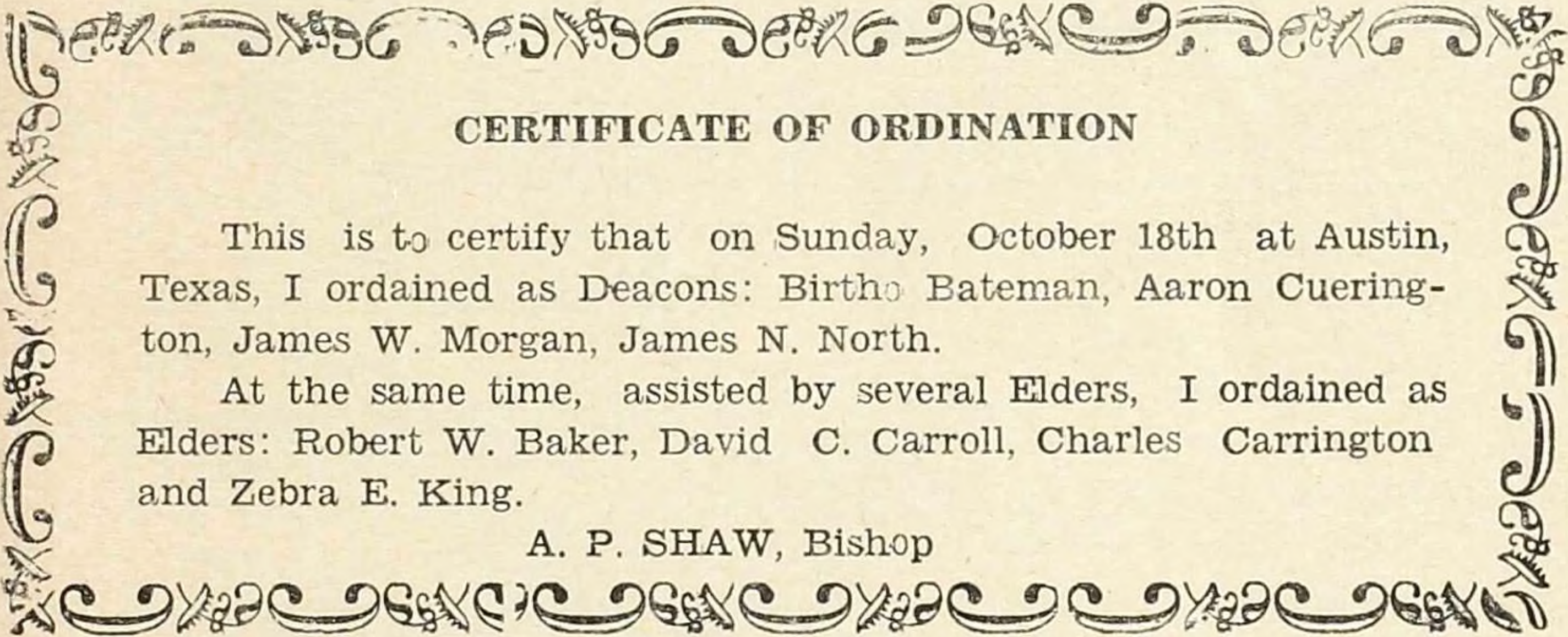
W. W. Baker read the revised list of the Committee on Conference Relation as fixed by the Cabinet,—this report was adopted. (See List)

G. A. Deslandes moved that after further devotions and remarks by Bishop Shaw and the reading of the appointments, that the conference stand adjourned Sine Die.

Announcements—Benediction by Bishop Shaw.

A. P. SHAW, President

W. W. BAKER, Secretary

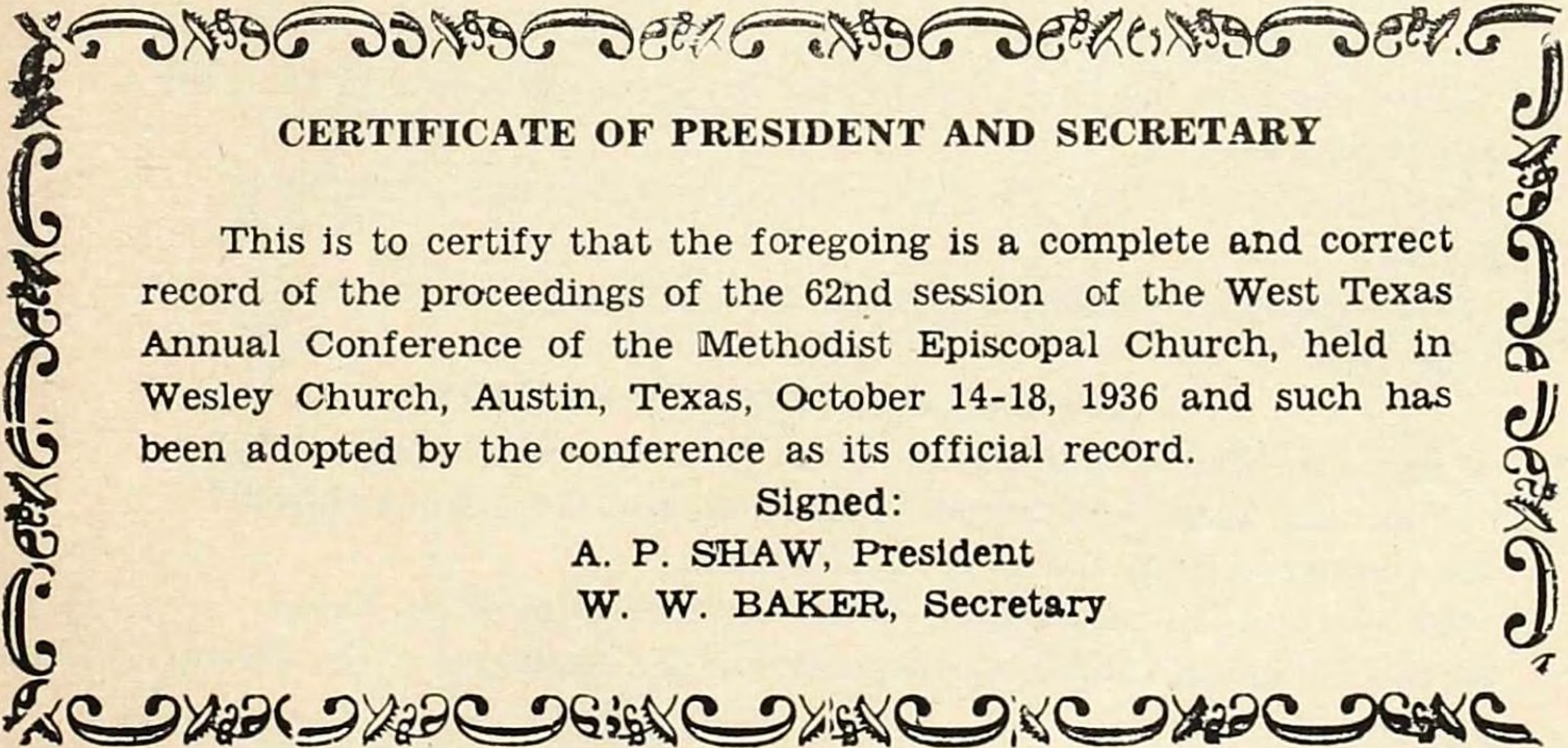


CERTIFICATE OF ORDINATION

This is to certify that on Sunday, October 18th at Austin, Texas, I ordained as Deacons: Birtho Bateman, Aaron Cuerington, James W. Morgan, James N. North.

At the same time, assisted by several Elders, I ordained as Elders: Robert W. Baker, David C. Carroll, Charles Carrington and Zebra E. King.

A. P. SHAW, Bishop



CERTIFICATE OF PRESIDENT AND SECRETARY

This is to certify that the foregoing is a complete and correct record of the proceedings of the 62nd session of the West Texas Annual Conference of the Methodist Episcopal Church, held in Wesley Church, Austin, Texas, October 14-18, 1936 and such has been adopted by the conference as its official record.

Signed:

A. P. SHAW, President

W. W. BAKER, Secretary

Part IV

DISCIPLINARY QUESTIONS

- 1 Who are the members of the Lay Conference and who are its officers?
(See Secretary's Record)
President:—E. M. Cooper, Seguin, Texas
Secretary:—Mrs. C. S. Williams, 422 S. Olive St., San Antonio, Texas.
Treasurer:—Mrs. A. W. Crane, 1125 S. Second Street, Waco, Texas
- 2 Is this annual conference incorporated according to the requirements of the discipline?—Yes.
- 3 What Officers and persons holding Moneys, Funds are bonded and in what amounts?—None.
- 4 What are the statistical and financial reports for the year?
(See Reports.)
- 5 What are the aggregates of General Conference Benevolences apportioned to this conference and approved for the ensuing year?
World Service -----649 Units
Episcopal Fund -----\$ 980.00
S. H. C. College ----- 3000.00
General Conference Expenses ----- 400.00
- 6 What are the items and aggregate of annual conference Benevolences approved by this body for the insuing year?
Sam Huston College -----\$3000.00
Gulfside ----- 500.00
- 7 What is the schedule of Minimum support for the Ministry?
(See report of commissions appointed.)
- 8 What are the approved claims of the District Superintendents, Bishops, and Conference Claimants for the ensuing year?
District Supts. -----\$10,000.00
Bishops ----- 890.00
Conference Claimants ----- 1950.00
- 9 What shall be the Evangelistic and Religious Educational Plan for the ensuing year?—
(Institutes to be held on each District under the direction of Dr. T. B. Echols) -----
- 10 What standing Committees shall be appointed this year?
(See list)

ANNUAL CONFERENCE SESSION

- 11 Who have been re-admitted?—J. D. Mackey (West Texas 1929)
- 12 Who have been received on Credentials and from what church?
Earl Spencer from the C. M. E. Church.
- 13 Who have been received on Trial (In studies of First Year?)
Birrho Bateman, Aaron Cuerington, J. H. Jackson, B. F. Stewart, Elmo Tatum.

- 14 Who have been continued on Trial (In studies of the Second Year?)
J. D. Foy, J. L. Jones, E. N. King.
- 15 Who have been continued on Trial (In studies of the Fourth Year?)
Karl Downs, I. C. Greer, I. B. Loud, L. W. Miles, Charles Warren.
- 16 Who have been discontinued?—Charles Connor.
- 17 Who have been admitted into Full Membership (Elected and Ordained Deacons Previously?—Charles Carrington.
- 18 What members are in the studies of Third year? (Admitted into Full Membership this year)—Earl L. Spencer.
- 19 What members are in the studies of the Fourth Year?
Karl Downs, I. C. Greer, I. B. Loud, L. W. Miles, Charles Warren.
- 20 What members have completed the course of study (Elected and Ordained Elders this year?—David C. Carroll, Zebra E. King.
- 21 What members have been elected Elders previously by the West Texas Conference?—Charles Carrington Elected last year but failed to be ordained.
- 22 What others have been elected and ordained Deacons? (As local Preachers)
Birtho Bateman, Aaron Curington, J. W. Morgan, J. N. North.
- 23 What others have been elected and ordained Elders? (As Local Deacons)
Robert W. Baker.
- 24 Who have been left without appointment to attend one of our schools?
Karl Downs, Charles Carrington, J. D. Foy, J. H. Jackson, Elmo Tatum, Charles Warren.
- 25 Was the Character of each Preacher examined?—
This was strictly done in open conference.
- 26 Who are the Accepted Supply Pastors?—Jack Caesar, J. N. North, J. W. Morgan, T. W. Stephens, Richard Weaver.
- 27 What Supply Pastors now in charge are taking the Conference Course of Study?
First Year:—J. W. Morgan, J. N. North, Richard Weaver.
Second Year:—Jack Caesar, T. W. Stephens.
- 28 Was the character of each Supply Pastor examined?—Yes.
- 29 Who have been transferred and to what Conference?
Willis J. King, Texas Conference.
- 30 Who have withdrawn? (From the Membership and Ministry of the Methodist Church?)—Marcus Freeman.
- 31 Who have been permitted to withdraw under charges or complaints?
Marcus Freeman.
- 32 What other personal notations should be made?
P. E. Donnell was recognized as a Deacon from the Missionary Baptist Church.
Turner Snow was recognized as an Elder from the A. M. E. Church.
J. V. Hutchinson, T. M. Bruton, J. L. Wattley were voted the effective relation.
- 34 Who are Supernumerary Preachers?
(1st Year)—Zebra King; (2nd Year)—Henry Tollerson.
- 35 Who are the Retired Ministers?
E. T. Allen, J. T. Carper, James Coe, J. W. Downs, R. H. Duncan, Mumford

- Fountain, E. C. Henderson, G. M. Mallory, T. S. Moore, J. S. Medlock, L. H. Richardson, I. T. Sanford, W. M. White, J. W. Stone.
- 36 Who are the Triers of Appeals?
G. A. Deslandes, T. H. Wyatt, Z. W. Holmes, L. L. Haynes, K. W. McMillan;
Reserves:—H. O. McCutchin, J. H. R. Dudley.
- 37 What is the report of the Conference Board of Home Missions?
(See Report)
- 38 What is the report of the Conference Board of Foreign Missions?
(See Report)
- 39 What are the Claims on the Conference Funds?
Conference Claimants -----\$1873.00
- 40 What has been received on these claims?
From Chartered Fund -----\$ 65.00
From Board of P and Relief ----- 817.00
From Pastoral Charges ----- 382.00
Balance Brt. Forward ----- 109.97
TOTAL ----- \$1373.97
- 41 How has it been applied?
(See Report of Board of Stewards)
- 42 What amount has been apportioned for the ensuing year for Conference Claimants?—\$1950.00.
- 43 Where are the Preachers stationed? (See list of appointments below.)
- 44 Where shall the next session of the Conference be held?
St. James, Waco, Texas.
Rev. Zan W. Holmes, Pastor, 612 S. Second Street, Waco, Texas

Part V.

APPOINTMENTS 1936-37

All these appointments are in Texas unless otherwise stated.

AUSTIN DISTRICT

— J. W. Warren, Superintendent (4), Austin

AUSTIN: Austin Ct	R. W. Baker	2	Austin, Texas
— Simpson	R. W. Allen	3	1703 E. 12th St., Austin
— Wesley	C. E. Whitiker	6	1207 Hackberry St, Austin
— Bartlett Ct	Birthe Bateman	1	Bartlett
— Belton Ct	F. J. Hutchinson	2	Belton
— Brownwood Ct	J. N. Hooley	3	Brownwood
— Cedar Creek Ct	D. F. Vance	4	1167 Curves, Austin
— Fayetteville Ct	R. A. Appling	1	Fayetteville
— Georgetown Ct	J. L. Wattley	1	Georgetown
— La Grange Ct	A. D. Jacques	1	LaGrange
Lampasas Circuit	(Supply)	1	Lampasas
— Llano Ct	G. W. Kelley	3	Llano
— Lockhart Ct	B. A. Byars	1	Lockhart

Luling Ct	S. N. Harvey	2	Luling
San Angelo	J. H. Carruthers	2	226 W. 6th St., San Angelo
Smithville Ct	B. F. Stewart	1	Smithville
Temple	T. M. Bruton	2	303 S. 12th St., Temple
Winchester Ct	J. S. Jordan	3	231 Spruce, San Antonio

SPECIAL APPOINTMENTS:

Miss V. M. Souders, Supt. Eliza Dee Home, Austin
 Miss Agnes Littles, Supt. Saeger-Brown Home, Baldwin, La.

DALLAS DISTRICT

Fred D. Young, Superintendent, 1215 E. Pulaski, (2), Fort Worth

Abilene	T. J. D. Sims	1	629 N. 6th St., Abilene
Corsicana	M. B. Burkley	3	1205 E. 10th, Corsicana

DALLAS:

Mill City	N. Pinkard (Sup)	3	2712 St. Louis, Dallas
Mt. Zion	P. Donnell (Sup)	1	Rt. 7, 120-Dallas
St. Paul	L. L. Haynes	5	1814 Goode St., Dallas
Trinity	J. H. Childs	3	Rt. 7, Box 120, Dallas
Warren	G. V. Cavitt	3	Rt. 9, Dallas
Wesley	J. L. Jones	1	2711 Thomas Ave., Dallas
Denison	J. H. R. Dudley	2	619 N. Fannin, Denison
Ennis-Waxahachie	I. C. Greer	1	104 Wyatt, Waxahachie
El Paso	I. H. Pierce	2	79 Palm St., El Paso
Ferris-Lancaster	F. L. Blair	3	3142 McDermott, Dallas

FORT WORTH:

Cowan-Cogswell	R. W. Weaver (Sup)	3	Rt. 5, Box 258B, Ft. Worth
St. Andrews	K. W. McMillan	2	1061 E. Rosedale Blvd. Ft. Worth
Thompson	D. B. Baker	4	2804 Prospect, Ft. Worth
Lubbock Ct	J. D. Mackey	1	Lubbock
Mexia (Jones)	J. A. Wills	4	Mexia
Mexia Ct	C. H. Hamilton	1	Rt. 5, Box 147, Mexia
Milford-Italy	E. N. King	1	Milford
Pelham Ct	H. O. McCutchin	1	Rt. 3, Box 92, Hubbard
Sherman-Pilot Point	C. R. Greene	3	1007 N. East, Sherman
Wichita Falls	B. F. Lee	2	Box 1762, Wichita Falls
Graham	E. L. Spencer	1	Graham

SAN ANTONIO DISTRICT

J. B. Phoenix, Superintendent, (2)—220 Maryland, San Antonio

Beeville Ct	M. Majors	1	Beeville
Belmont Ct	J. W. Maye	1	Rt. 1, Box 41, Luling
Corpus Christi	R. L. Palmer	3	1109 Ramirez, Corpus Christi
Cuero	C. W. Franklin	2	Cuero

Eades Ct	H. C. Willis	1	1903 Dawson, San Antonio
Floresville Ct	J. F. Muse	3	Floresville
Gonzales-Elm	M. L. Wyatt	3	Gonzales
Gonzales Ct	Wm. Mosely	2	Rt. 5, Box 69, Gonzales
Hondo-Uvalde	F. M. Hudspeth	1	Hondo
Kerrville	Obie Coe	1	Kerrville
Kingsville Circuit	M. W. Stephens	1	Kingsville
Nixon Circuit	W. M. Ellison, Jr.	4	Nixon
Pearsall Ct	N. W. Stephens	14	Pearsall
Pleasanton Ct	A. M. Mason	1	Pleasanton

SAN ANTONIO:

E. St. Paul	T. H. Wyatt	1	211 Lockhart, San Antonio
Jacobs	W. M. Ellison	5	408 S. Polaris, S. Antonio
Jones	L. W. Miles	1	117 W. Olmos Dr. S. Antonio
St. Paul	G. A. Deslandes	4	130 N. Mesquite, San Antonio
S. S. Antonio	H. L. McKinney	1	521 N. Palmetto, S. Antonio
S. A. Heights	E. C. Henderson	1	1107 Perea, San Antonio
Seguin-Olmos	W. B. Lott	4	Seguin

VICTORIA DISTRICT

H. A. Jones, Superintendent (3)—Victoria, Texas.

Alleyton Ct	J. Caesar (Sup)	1	Hallettsville
Altair Ct	D. C. Carroll	3	Schulenburg
Bloomington Ct	W. M. Franklin (Sup)	2	Victoria
Colonge Ct	A. C. Holden	4	Fannin
Columbus	J. J. Hardemon	1	Columbus
Edna Ct	W. W. Baker	2	Box 217, Edna
Garwood Ct	T. W. Stephens (Sup)	1	Hallettsville
Goliad	L. L. Strait	2	Goliad
Hallettsville Ct	M. C. Ellison	5	Hallettsville
Oakland Ct	J. H. Brown	1	Oakland
Schulenburg Ct	T. H. Bryant	4	Schulenburg
Sublime Ct	O. K. Brewster (Sup)	1	Sublime
Victoria	A. G. Russell	2	Victoria
Wharton Ct	J. H. Strait	4	Wharton
Weimer Ct	H. Grant (Sup)	1	Weimar
Yoakum Ct	George Waters	2	Yoakum

WACO DISTRICT

J. Walt Moore, Superintendent, (1)—504 Garrison, Waco

Aquilla-Hillsboro	J. W. Morgan	2	Waco
	(Sup)		
Bowman-Reagan	Esau Smith	5	Rt. 3, Marlin
Bremond Ct	J. H. Marshall	5	Bremond
Calvert	I. B. Loud	2	Calvert
Chilton-Mooresville	P. H. Phillips	2	Chilton

✓ Cameron	E. G. Gray (Sup)	2	Waco
✓ Groesbeck-Kosse	R. R. Bailey	2	Groesbeck
✓ Hubbard-Dawson	H. Harrison	1	Hubbard
✓ Moody-Gatesville	T. H. Foy	1	Valley Mills
✓ Mart Ct	A. D. Holden	1	Mart
✓ Marlin	S. D. Morely	3	Marlin
✓ Mayesfield Ct	N. J. Moore	2	Rt. 1, Mayesfield
✓ Rosebud Ct	A. M. Cuerington	2	Mayesfield
✓ Rocky Cedar	S. A. Keesee	3	Rt. 5, Mexia
✓ Springfield Ct	Dee Tucker	4	Rt. 5, Mexia
✓ Latin-Majors	H. Kuykendall	1	111 Payne, Waco
✓ Valle Mills	J. B. Eggleston	4	Valley Mills

WACO:

✓ Eracks	Supplied	1	Waco
✓ Jones	J. G. Browne	1	908 Clifton, Waco
✓ Mt. Zion	L. E. Muse	1	605 Marlborough, Waco
✓ St. James	Z. W. Holmes	2	612 S. Second St., Waco

SPECIAL APPOINTMENTS

- ✓ T. B. Echols, Director of Religious Education New Orleans Area
1906 Tillotson, Austin, Texas
- ✓ S. E. Grannum, President S. H. College, Austin, Texas
- ✓ W. A. Robinson, Principal Eoys School, Gulfside, Waveland, Miss.
- ✓ S. G. Graham, Conference Evangelist, Waco, Texas, (809 Denison Street)

REPORT OF COMMITTEE ON CONFERENCE RELATIONS

AUSTIN, TEXAS, October 15, 1936.

Your Committee on Conference Relations begs to report to you as follows:

- 1—We recommend that James L. Jones, J. D. Foy and E. N. King be advanced to the studies of the second year.
- 2—We recommend that Karl Downs, Charles Warren, I. C. Greer, I. B. Loud, L. W. Miles be advanced to the studies of the fourth year.
- 3—We recommend that D. C. Carroll and Zebra King be graduated from the Course of Study and elected to Elders Orders.
- 4—We recommend that T. M. Bruton, J. L. Wattley and J. W. V. Hutchinson be given the Effective Relation.
- 5—We recommend that Zebra King be given the supernumerary relation.
- 6—We recommend that Henry Tollerson be continued on the supernumerary list and requested to locate at the next Conference.
- 7—We recommend that Earl Spencer be received on his credentials from the C. M. E. Church and placed in the studies of the third year.
- 8—We recommend that Birtho Bateman, B. F. Stewart, Aaron Cuerington, J. H. Jackson, and Elmo Tatum be received on Trial and placed in studies of the First Year.
- 9—We recommend that L. H. Richardson be granted the Retired Relation.
- 10—We recommend that J. W. Morgan, J. N. North, Richard Weaver, Jack

- Caesar, T. W. Stephens be accepted as Supply Pastors.
- 11—We recommend that Charles Carrington, D. C. Carroll, Z. E. King, and R. W. Baker be elected to Elders Orders.
- 12—We recommend that J. D. Mackey be re-admitted, West Texas (1929.)
- 13—We recommend that Turner Snow be recognized as Elder from the A. M. E. Church.
- 14—We recommend that P. E. Donnell be recognized as a Deacon from the Missionary Baptist Church.
- 15—We recommend that Charles Connor be discontinued account of the Ten years in the course of study.
- 16—We recommend that the following be left without appointment to attend one of our schools:—Karl Downs, Charles Warren, Charles Carrington, J. D. Foy, J. H. Jackson and Elmo Tatum.
- 17—We recommend that Bishop Shaw will appoint W. A. Robinson as Principal of the Boys School at Gulfside, Waveland, Mississippi.
- 18—We recommend that J. W. Morgan, J. N. North, Birtho Bateman, Aaron Cuerington be elected to Deacons Orders.
- 19—On motion of J. W. Warren, S. G. Graham was voted the relation of Conference Evangelist and Bishop Shaw authorized to appoint him as Conference Evangelist by the required number of votes of the Discipline.

Signed:

K. W. McMILLAN, Chairman

F. J. HUTCHINSON, Secretary.

BOARD OF STEWARDS REPORT

(EXHIBIT (A)—

For annuity distribution	861½ Years
Multiplied by \$1.50 per year	\$1,373.97
Received on these claims:—	
From Board of Pensions	\$ 817.00
From Chartered Fund	65.00
Pastoral Charges	382.00
Balance Brought Forward	109.97
EXPENDITURES OF THE ABOVE:—	
To Retired Men	\$ 534.00
To Widows of Ministers	695.19
To Children	58.87

EXHIBIT (B)—

E. T. Allen, 9 years	\$13.50
J. T. Carper, 29 years	50.50
James Coe, 7 years	10.50
J. W. Downs, 23 years	39.50
R. H. Duncan, 20 years	30.00
M. Fountain, 21 years	36.50
E. C. Henderson, 26 years	39.00

G. M. Mallory, 22 years -----	33.00
J. S. Medlock, 33 years -----	49.50
T. S. Moore, 31 years -----	46.50
L. H. Richardson, 43 years -----	71.50
I. T. Sanford, 25 years -----	37.50
J. W. Stone, 34 years -----	51.50
W. M. White, 17 years -----	25.50

EXHIBIT (C)—

Widows:

Bennett, P B., 21 years -----	\$31.50
Elacksen, W. E., 12 years -----	18.00
Brothers, Annie, 4½ years -----	6.75
Brown, Mrs. J. E., 16½ years -----	30.75
Caviness, Mrs. M. C., 15¾ years -----	23.62
Mrs. John Coe, 13½ years -----	20.25
R. D. Dennis, 12¾ years -----	19.12
Mrs. Alfred Dickerson, 8¼ years -----	12.37
Mrs. J. S. Edmondson, 9 years -----	13.50
Mrs. J. C. Eusan, 13½ years -----	20.25
Mr. P. Gates, 16½ years -----	24.75
Mrs. B. J. Goff, 12¾ years -----	19.12
Mrs. S. W. Harvey, 21 years -----	31.50
Mrs. J. H. Holden, 14½ years -----	21.37
Mrs. S. D. Humphry, 7½ years -----	11.25
Mrs. J. H. Hutchinson, 24 years -----	36.00
Mrs. Albert Johnson, 17½ years -----	25.87
Mrs. S. E. Jones, 22½ -----	33.75
Mrs. W. M. Mooney, 22½ years -----	33.75
Mrs. W. H. Moseby, 21 years -----	31.50
Mrs. Rosa Moten, 3 years -----	4.50
Mrs. J. H. Napier, 10½ years -----	15.75
Mrs. George Pleasants, 8¼ years -----	12.37
Mrs. R. H. Ponton, 20¼ years -----	30.37
Mrs. William Reed, 23¼ years -----	34.87
Mrs. L. W. Roberts, 4½ years -----	6.75
Mrs. Emma Smith, 10½ years -----	15.75
Mrs. Riley Soda, 15¾ years -----	23.62
Mrs. J. W. Stone Jr., 7½ years -----	11.25
Mrs. D. N. Swann, 10½ years -----	15.75
Mrs. G. W. Townsend, 15¾ -----	23.62
Mrs. C. P. Westbrooks, 11¼ years -----	16.87
Mrs. C. S. Williams, 4½ years -----	6.75
Mrs. J. W. Wright, 12 years -----	18.00

EXHIBIT (D)—

Mrs. J. L. Edmondson—Mary -----	\$ 4.50
---------------------------------	---------

Mrs. J. L. Edmondson—Grace	4.50
Mrs. J. C. Eusan—Warren	10.12
Mrs. B. J. Goff—Inez	11.25
Mrs. Rosa Moten—(4 children)	6.00
Mrs. Albert Johnson—Annie Mae	11.25
Mrs. W. H. Blackwell—W. G. Purnell	8.75
Mrs. W. H. Blackwell—W. G. Purnell	6.75
Mrs. C. S. Williams—(2 children)	24.74

DEACONESS BOARD

The Conference Deaconess Board met and confirmed the appointment of Miss V. M. Souders as Superintendent of the Eliza Dee Home and Miss Agnes Little as Superintendent of the Seager Brown Orphanage Home of Baldwin, Louisiana. We endorse the work of these women and commend them for the type of service rendered.

Signed:—C. E. WHITIKER, President

HOSPITALS AND HOMES

Since the Hospitals and Homes have a distinct place in the machinery of the church and whereas they are being just meagerly supported by our group and since they need monies to give relief to the unfortunates of the country, thereby giving better opportunity for improved health condition,

Resolved that we go the limit in our support in the maintenance of these institutions that give such permanent results for the growth of Kingdom interest.

Signed:—WILLIAM ELLISON JR.

YOUNG PEOPLES WORK

We feel the need of our Young People becoming identified with such religious movements as are now apparent in our church for the development of youth in times like these, hence we recommend a religious program for their growth and development. We also pledge ourselves to organize for the growth of youth in every district in the conference.

We recommend that we hold Institutes or Councils of Youth in every district through the Summer months and that we ask Dr. T. B. Echols to have charge and maintain if possible a uniform faculty for the carrying on in every district activities of Temperance Education, Peace Councils, and Social service improvement as well as Religious and Rereational feats.

Signed:—E. M. COOPER and Committee

EVANGELISM

The world needs salvation. The church is God's agent to save the world. We need earnest workers at the task of saving the world. Hence resolve that

this conference be open and outspoken against sin in every form and pledge ourselves anew for a program of Evangelism in each charge for the coming conference year.

Signed:—R. W. ALLEN.

WOMAN'S FOREIGN M. SOCIETY

We resolve in this conference to set aside the Fifth Sunday in August to pay our dues and bestir interest among the church folk in the task of helping the Foreign Fields.

Signed:—MRS. C. S. WILLIAMS.

ENTERTAINMENT

Since our entertainment has been hospitable here in Austin and since Pastor Whitiker and his folk have been generous in their hospitalities toward us, we hereby express our appreciation and thanks for the same.

Signed:—MRS. OBIE COE.

LADIES AID SOCIETY

We recommend the organizing of a Ladies Aid Society in each charge and urge that they be maintained for the purpose indicated in the Discipline of the Church.

Signed:—A. M. MASON.

AUDITING

We have examined the accounts of the several officers handling funds for the conference and find that with the present system of bookkeeping that there is a fine chance for discrepancies in the same, and we recommend a different type of bookkeeping in order that accounts may be clearer. We have reasons to believe that monies have all been accounted for, except a Maintenance check due Aquilla Circuit or E. N. King, hence we are urging that this matter be cleared up and check located by next conference.

Signed:—J. H. CHILDS.

MINIMUM SUPPORT

Pastors receive entirely too little money for the services in the Community. The amounts in most cases are wholly inadequate for decent living, hence we recommend:

- 1—Readjustment of charges so as to give more support
- 2—That we face the problem of ineffectiveness in the ministry
- 3—That we create a sustentation fund to supplement salaries of the lesser paid men.
- 4—That we build finer interest among the laymen in taking care of this part of the financial program.

5—We close by asking if we might not pro-rate the salaries of the men of the conference.

Signed:—S. E. GRANNUM.

LAY ASSOCIATION

We discover that the retired men are not receiving their share of the ministerial support. There is need for alarm at this all important negligence on our part, hence we implore the pastors and laymen to raise the 5 per cent basis for this interest and thereby gladden the hearts of the Claimants.

Signed:—E. M. COOPER, Pres. Lay Association

SABBATH OBSERVANCE

We recommend that the Sabbath be used for worship and that on the Seventh day of the week that we turn aside for worship in all our churches and invite that families observe as far as possible the keeping of the Sabbath for worship and rest.

Signed:—J. N. HOOEY.

—PART IV—

BENEVOLENCE QUOTAS

Conference Claimants

Austin District	\$400.00	
Dallas District	500.00	
San Antonio District	500.00	
Victoria District	200.00	
Waco District	350.00	\$1,950.00

EPISCOPAL FUNDS

Austin District	\$250.00	
Dallas District	250.00	
San Antonio District	250.00	
Victoria District	100.00	
Waco District	150.00	\$ 980.00

GENERAL CONFERENCE EXPENSE

Austin District	\$ 85.00	
Dallas District	100.00	
San Antonio District	100.00	
Victoria District	65.00	
Waco District	75.00	\$ 400.00

CONFERENCE MINUTES

Austin District -----	\$ 34.00	
Dallas District -----	38.00	
San Antonio District -----	38.00	
Victoria District -----	30.00	
Waco District -----	34.00	\$ 170.00

WORLD SERVICE—649 UNITS

Austin District -----	135 Units
Dallas District -----	150 Units
San Antonio District -----	150 Units
Victoria District -----	90 Units
Waco District -----	125 Units

SAM HUSTON COLLEGE

Austin District -----	\$600.00	
Dallas District -----	700.00	
San Antonio District -----	700.00	
Victoria District -----	400.00	
Waco District -----	600.00	\$3,000.00

AN APPRECIATION TO BISHOP SHAW

“Where there is no vision the People Perish” is the statement of the Old Testament prophet.

Where there is no vision the leadership of an Annual Conference will perish, but the leadership of Bishop A. Preston Shaw in guiding the affair of the sixty-second session of the West Texas Annual Conference has portrayed not only vision but mature judgment and sound wisdom.

He has been kind and considerate of every one, his morning messages to the Conference have been full of inspiration and power so that each of us is pledging himself to go to our fields of labor, whether to the same charge or to a new charge, with a greater determination than ever before to labor in the vineyard of the Lord.

Be it Resolved therefore, that this conference extend to our presiding Bishop A. P. Shaw a rising vote of thanks and that we request his presidency at the next session of our Annual Conference 1937 and pray God’s richest blessings upon him, his good wife and children.

Signed:—J. W. WARREN, For the Cabinet.

EPISCOPAL FUND

Whereas the Methodist Episcopal Church has from its beginning operated

under the Episcopal form of leadership and whereas the church through its method of election has given us capable shepherds as general superintendents who have championed the cause of social and spiritual advancement among us.

Be it Resolved that the West Texas Annual Conference go on record in lending its support in sharing the responsibility in the raising of its quota of the Episcopal fund through the percentage allotment, as worked out by the church.

Signed:—L. L. HAYNES.

EPWORTH LEAGUE

Whereas the founders of the M. E. Church have given to us an institution that has elevated us through many generations, it becomes our duty to carry on the work of this great movement, because it trains the youth in religious education which, enables the youth to be prepared to do general church work.

Therefore, we recommend that each pastor set up in each charge an Epworth League and influence as many Epworth presidents and co-workers as possible to attend our summer district institutes.

Be it further Resolved, that the West Texas Conference go down on record as supporting the Epworth League.

Signed:—Z. W. HOLMES.

SAM HUSTON COLLEGE

Whereas Samuel Huston College has been encumbered for the last ten years with a heavy debt, and, whereas this debt has hindered every plan for improvement and advancement, and whereas Dr. Stanley E. Grannum has reduced the debt from \$13,000 to \$7,000 and has plans whereby he can secure \$4,000 provided the conference raise \$3,000.

Be it Resolved: That the conference pledge itself to raise the \$3,000 during the next conference year; \$2,000 to be raised on Lincoln Day.

Signed:—C. E. WHITKER.

We have been doing something each year in a small way on the matter of raising funds for Conference Claimants for immediate distribution. This effort has been far too puny and results too small.

Since the death of D. C. Lacy, 1924 nothing has been raised for our permanent investment fund.

We are heading toward a Retired Relation and unless something is done, there will be little or nothing for us as there is little or nothing for our retired widows and children today.

We recommend therefore, the two following methods of procedure:

1. That our pastors take more seriously the disciplinary requirement as to the five percent apportion based on Pastor's Salary collected.
2. That a conference Board of Pensions and Relief be regularly organized with the following officers: (1) President; 2—Vice President; 3—Secretary; (4) Treasurer.

We recommend further that the program committee of the next Annual Conference be asked to provide time for a Conference Anniversary of Pensions and Relief at which time Board Representatives and ministers shall present the cause of Pensions and Relief and we request that the Presiding Bishop be present and call the roll of the Pastors' report for our permanent funds.

We recommend that our largest churches like Fort Worth, Dallas, San Antonio, Austin and Waco shall report \$15.00 for the permanent fund. That the second largest churches like Marlin, Jacob's Chaple, Cuero and Victoria shall report \$10.00 that all other churches \$5.00. These Apportionments are to be raised in addition to our regular 5 per cent askings.

We recommend finally that a Conference secretary of the Board of Pensions and Relief be elected to promote this work within the Conference. The said representative is asked to serve without salary also that District Secretary of the Board of Pensions and Relief be elected by District Conference to promote the cause of Pensions at all our District meetings.

The cabinet is requested to nominate the members of the commission suggested by this resolution and to nominate the conference Secretary.

Signed:—C. E. WHITTAKER.

STATISTICIAN'S REPORT—AUSTIN DISTRICT

Name of Charges	Name of Pastor	Support of Pastor			Support of Dist. Supt.		Support Bishops		Conf. Claim't		Total Paid For Ministerial Support	Total Deficiency
		Total Claim including House rent	Total Paid, including House Rent	Rental Value of Parsonage	Total Claim, including House Rent & Administrative Ex.	Total Paid, including House Rent & Administrative Ex.	Claim	Paid	Claim	Paid		
Austin Circuit	D. F. Vance	\$ 410	\$ 175	\$ 60	\$ 80	\$ 38	1		1		\$ 213	\$ 279
Simpson	R. W. Allen	1200	990	100	144	144	30		48		1134	288
Wesley	C. E. Whitiker	1800	1650	100	272	240	34	30	75	25	1945	200
Belton Circuit	F. J. Hutcrinson	720	335	120	160	69	12	3	12	2	409	375
Brownwod Circuit	J. N. Harvey	700	470	60	80	80	7	3	10	2	585	212
Cedar Creek	D. F. Vance	400	150	50	200	150	6	1	3	1	150	250
Fayetteville Ct.	B. F. Stewart	300	82		80	50	2	2	4	2	136	250
Georgetown Ct.	A. D. Jacques	330	140	80	60	10	2	2	5	2	156	240
Hutto	A. D. Jacques	100	160		50	15	5		3		30	75
Kellsbranch	F. J. Hutchinson	330	140	30	60	10	2	2	5	5	156	240
Lampasas	A. D. Jacques	400	110	48	72	44	2	1	5	1	150	323
Littig	R. W. Baker	300	67		38	38	3	1	1	1	107	233
Llano-Mason	G. W. Kelly	672	329	72	120	101	7		6	1	441	319
Luling Circuit	S. N. Harvey	1200	388	120	144	144	14	2	10	1	535	833
LaGrange Ct.	B. A. Byars	660	350	60	92	92	6	3	12	5	430	338
Lockhart Ct.	R. A. Appling	620	246	120	130	85	5		18		331	432
San Angelo Ct.	J. H. Carruthers	1200	1000	120	116	116	5	5	40	5	1126	235
Smithville	J. S. Jordan	800	350	30	258	158	7	1	10		508	417
Temple-Bartlett	T. M. Bruton	800	441	120	140	135	8	3	20	3	582	356
Giddings Circuit	V. A. McCoy	150	29		40	13	1	1	2		43	150
		\$12409	\$ 6206	\$1086	\$1952	\$1575	157	59	299	57	\$ 6938	\$ 6320

STATISTICIAN'S REPORT—DALLAS DISTRICT

Amarillo Cir.	J. W. V. Hutchinson	\$	\$	\$	\$	\$					\$	\$
Abilene	C. H. Hamilton	572	244	74	60	38		1		1	284	277
Corsicana	M. B. Burkley	600	320	120	40	40	5	1	5		361	189
Denison	J. H. R. Dudley	1140	699	240	100		18	8	45	5	719	494
Dallas—Mill City	N. Pinkard	200	103		20	5	4	8	8	1	111	123
Mt. Zion	M. L. Fitzgerald				20	11						
St. Paul	L. L. Haynes	1900	1900		280	280	38	35	95	50	2265	48
Trinity	J. Henry Childs	1000	740	240	80	80	3	6	3	3	829	
Warren-Wesley	G. V. Cavitt	600	275	120	60	38	6	5		1	313	8
Ennis-Waxahachie	M. Majors	470	198	6	80	40	5	2	5	2	234	236
Ft. Worth—Cowan	Richard Weaver	300	130		40	40	5	2	5	2	174	196
Cogswell	J. L. Jones	160	26		40	10	6	2	8	5	38	176
St. Andrews	K. W. McMillan	2120	1800	300	260	260	36	20	50	15	2095	125
Thompson	D. B. Baker	1000	658	100	100	100	8	4	8	3	665	334
Lubbock	I. C. Greer	360	140		70	23	5	2			165	265
Milford-Italy	H. Harrison	400	75		100	58	10	2	1	1	135	376
Mexia-Jones	John A. Wills	771	417	52	70	50	8	3	15	2	572	286
Mexia Cir.	J. H. Brown	700	400	60	100	100	4	4	15	3	507	248
Pelham Cir.	J. G. Browne	896	628	96	150	150	10	8	15	8	794	181
Sherman Cir.	C. R. Greene	800	444	144	100	79	7	10	15	7	540	230
Wichita Falls Cir.	B. F. Lee	900	351		100	74	7	10	10	9	467	
El Paso	I. H. Pierce	820	680		140	112			5		672	168
Ferris-Lancaster	Frank Blair	600	258		80	72	3	6	6	2	332	850
		\$16309	\$10986	\$1550	\$2090	\$1765	190	131	309	115	\$12165	\$ 4071

STATISTICIAN'S REPORT—SAN ANTONIO DISTRICT

Beeville-Pettus	J. W. Maye	1096	575	96	100	84	4	3	10		662	449
Belmont Cir.	G. F. Alexander	940	940	240	80	80	18	5	35	7	1032	199
Cuero	C. W. Franklin	360	110	25	80	9	3	3			121	385
Corpus Christi	R. L. Parmer	606	333	106	100	56	7	2	15	2	396	226
Eades-Lavenia	L. H. Richardson	900	802	84	100	82	7	3	6	3	490	439
Floresville-Runge	J. F. Muse	560	200	60	60	49	5	2	15		257	389
Gonzales-Elm	M. L. Wyatt	150	125	30	40	18	2	2	2	2	150	78
Gonzales Cir.	W. M. Mosley	800	606	90	100	100	8	2	40	2	710	148
Hondo-Uvalde	H. L. McKinney	810	611	120	100	100	12	12	15	1	723	94
Kerrville	H. O. McCutcheon	406	209	24	60	48	10	4	8	2	263	244
Kingsville Cir.	L. W. Miles	100	100		40		2	2	2	1	103	
Nixon Cir.	Wm. Ellison Jr.	300	75		60	60	2	2	2	2	139	126
Pearsall	N. W. Stephens	1300	780	180	80	80	13	10	30	10	880	362
Pleasanton Cir	H. C. Willis	1380	765	180	134	129	15	5	20	5	904	516
S. A.—E. St. Paul	J. Walt Moore	800	250		60		20		40	1		
Jacobs	Wm. Ellison Sr.	890	325	68	60	38	10	1	10	1	365	410
Jones	A. M. Mason	1900	1900	300	300	300	40	40	80	80	2320	
Lincoln	M. W. Stephens	896	250	96	60	28	3	2	10		280	520
St. Paul	G. A. Deslandes											
Sanford	J. J. Hardeman											
S. A. Heights	Henry Tollerson	1100	680	180	100	100	12	5	25	8	793	524
San Antonio	Supplied											
Seguin-Olmos	W. B. Lott	\$16704	\$ 7909	\$2003	\$1796	\$1439	200	118	374	128	\$11371	\$ 5883
Yorktown	Supplied	\$ 650	\$ 310	\$ 60	\$ 42	\$ 15	12	10	2		\$ 356	\$ 299
		760	360	60	80	63	5	3	7	1	427	465

STATISTICIAN'S REPORT—VICTORIA DISTRICT

Name of Charges	Name of Pastor	Support of Pastor			Support of Dist. Supt.		Support		Claim't		Total Paid For Ministerial Support	Total Deficiency
		Total Claim including House rent	Total Paid, including House Rent	Rental Value of Parsonage	Total Claim, including House Rent & Administrative Ex.	Total Paid, including House Rent & Administrative Ex.	Claim	Paid	Claim	Paid		
Alleyton	E. N. King	\$ 400	\$ 50	\$ 60	\$ 40	\$ 11	6		1	1	\$ 61	\$ 326
Altair Cir.	D. C. Carroll	800	142	60	136	38	11	10	10		190	707
Bloomington Cir	W. M. Franklin	272	72	8	60	10	6	3	5		85	256
Cologne Cir.	A. C. Holden	500	185	48	100	80	10	6	15	1	272	382
Columbus Cir	Obie B. Coe	848	266	48	160	35	20	9	40	1	311	709
Edna Cir.	W. W. Baker	800	400	100	160	100	7	7	3	5	512	558
Garwood Cir	T. M. Stephens	350	115		80	80	5	5	7		200	240
Goliad Cir.	L. L. Strait	810	318	60	108	53	12	3	15	6	380	665
Hallettsville Cir.	M. W. Ellison	850	415	72	120	105	8	5			525	361
Oakland Cir.	Sup. (J. Caesar)	900	400	100	160	110	8	8	15	2	520	309
Schulenburg	J. H. Bryant	800	340	60	120	72	14	9	20	2	443	571
Sublime Cir.	R. Grant	204	59	24	60	11					70	194
Victoria	A. G. Russell	900	1144	15	160	160	15	15	5		1085	
Wharton Cir.	J. H. Strait	800	321		100	65	14	4	14		391	637
Weimar Cir.	Turner Snow	315	55		40	30	6		12		70	245
Yoakum	George Waters	572	203	6	140	80	5		10		283	444
		\$ 7821	\$ 4475	\$ 661	\$1744	\$1038	147	84	172	18	\$ 5389	\$ 6604

STATISTICIAN'S REPORT—WACO DISTRICT

Aquilla-West	James W. Morgan	\$ 525	\$ 157	\$	\$ 68	\$ 43	16	3	10	3	\$ 206	\$ 213
Bowman-Regan	Eusa Smith	500	250	96	100	60	4	3	5	3	320	289
Bremond Cir.	J. H. Marshall	300	120	30	30	23	15	2	15	180	150	180
Calvert	I. B. Loud	675	500	75	60	44	15	5	30	5	554	141
Cameron Cir.	E. G. Gray	120	120		12	12	1	1	2	1	134	1
Chilton Cir.	P. H. Prillips	500	269	60	120	58	3	3	3	3	333	292
Groesbeck	R. R. Bailey	600	257	72	72	72	6	5	30	2	336	372
Marlin	S. D. Mosley	1296	670	96	126	150	15	10	20	10	840	545
Mart-Springhill	A. D. Holden	1100	500	100	120	60	4	3	4	4	507	561
Milam Cir.	N. J. Moore	700	150	50	160	40	10	2	30	1	193	712
Rockey-Cedar	S. A. Keesee	648	348	48	100	67	7	5	15	2	422	348
Springfield Cir.	Dee Tucker	250	70		20	9	1	1	3	1	81	197
Satin Cir.	T. J. D. Sims	575	256	36	30	80	10	3	20	5	344	265
Valley Mills Cir.	J. B. Eggelston	636	235	36	30	40	3	3	6	2	270	499
Brack-Majors	H. Kuykendall	600	285	33	80	80					365	215
Jones Chapel	S. G. Graham	800	420	120	80	80	6	6	5	5	496	264
Mt. Zion	L. E. Muse	1146	740	10	80	195	12	12	5	7	839	400
St. James, Waco	Zan Holmes	1600	1000	400	200	45	16	15	40	15	225	231
Moody-Gatesville	T. H. Foy	500	332	60	60	10	3		9	5	382	180
Hubbard-Dawson	F. M. Hudspeth	568	520	50	44	18	5	5	5	4	573	60
Rosebud	A. M. Cuerington	200	50		20	18	2	2	2	2	72	152
		\$14233	\$ 7241	\$1858	\$1827	\$1346	181	93	314	98	\$ 9222	\$ 6364

STATISTICIAN'S REPORT—RECAPITULATION

Austin	T. H. Wyatt	\$12409	\$ 6206	\$1086	\$1952	\$1575	157	59	299	57	\$ 6939	\$ 6320
Dallas	F. D. Young	16309	10986	1550	2090	1765	190	131	309	115	12165	4071
San Antonio	J. B. Pheonix	16407	7909	2003	1796	1439	200	118	374	128	11371	5883
Victoria	H. A. Jones	7821	4475	661	1744	1038	147	84	192	18	5389	6604
Waco	J. W. Warren	13622	6956	1425	1747	1266	181	93	314	98	8657	6149
		\$66876	\$36532	\$6725	\$9329	\$7083	875	485	1468	416	\$44520	\$20027

STATISTICIAN'S REPORT—AUSTIN DISTRICT (Continued)

Name of Charges	Baptisms		Prep. Mem'ship		FULL MEMBERSHIP						Church Schools				Epworth Leag		
	Children Baptized	Adults Baptized	Prep. Members Rec'd during year	Prep. Members now on Roll	Rec'd from P. M. or on Profes'n of Faith	Rec'd by Transfer	Full Mem's now on roll including Inactive Members	Inactive Members	Removed by Transfer	Deaths During Year	No. Church Schools	Officers & Teachers	Enrolled in all Depts. Inc. officers teachers, Pup., Nur'y D., H. D.	Church School Cur. Expense	Senior & Yo'g People	Intermediate	Juniors
Austin Circuit	3	1	4	110			110	37	2	4	2	9	41	6	15	9	6
Simpson	10	4	14		14	20	290	25	4	4	1	10	50	48	20		20
Wesley	4	3	3	3	3	8	600	75	2	12	1	25	225	100	35		
Belton Circuit	7		12	12			212	50		7	2	20	130	30	40		35
Brownwood Circuit	3		2			4	69	12	5	3	2	10	40	10	15	8	5
Cedar Creek	2	1	2	1	1	1	80	4		1	3	15	65	10	15	12	10
Fayetteville Circuit	8		4	6	1		75	15		1	2	14	40	6	12		
Georgetown Circuit	9		25	15	10		152	30		2	4	24	136	24	30	45	45
Hutto							20				4	5	20	1	8		3
Kellsbranch	7	2	14	100	1		90	50		1	1	9	50	10	20		15
Lampasas	16	1	7	13	10		42	9		2	2	6	22	8	8		6
Littig	6	2	2	50	2		50	6		3	2	8	30	10			
Llano-Mason			5	5		77	10			1	3	6	44	2			
Luling Circuit	14		5		5		180	85		5	3	29	128	12	50	40	45
LaGrange	1	1	15		15	11	170	46		6	3	10	60	16	1	10	10
Lockhart Circuit	5		4	9		1	115	42		4	2	14	52	12	22		8
San Angelo Circuit	1		17		3	13	116	45	1		1	10	48	15	15	10	12
Smithville	7	4				2	158	10			4	22	75	27	30		
Temple Bartlett		8	15	15		9	159	20	3	2	2	14	65	30			
Giddings Circuit		2	2				29	4		1	2	9	30	3			
	78	25	129	215	53	68	3562	512	17	55	36	234	1194	351	285	122	186

STATISTICIAN'S REPORT—DALLAS DISTRICT (Continued)

Amarillo Cir																	
Abilene					1	5	28	10			1	6	46	7			
Corsicana						3	42	7		1	1	4	20	6	6	4	4
Denison	2	1	5	134	1		134	31		5	1	9	64	12	25		25
Dallas—Mill City			5				42		4	1	1	6	16	6			
Mt. Zion			4				4				1	3	8				
St. Paul	10	3	10	10	18	47	998	360	30	10	1	22	300	150	18		20
Trinity	6	1	8	23	8		106	46	2		1	8	48	12	16	9	9
Warren-Wesley	1		3	15		3	84	10	2	2	2	15	50	36	14		10
Ennis-Waxahachie						1	90	10		1	2	16	50	16	11		5
Ft. Worth—Cowan							46	21	2	1	5	15	4		12		
Cogswell			1	1	1	1	17	1	1	1	1	4	24	6	9		
St. Andrews	12	12	90		45	45	832	50	50	17	1	53	278	50	20		19
Thompson	1		2	4	1		180	58			1	8	50	11	26	10	
Lubbock Cir				16		1	40	15	4		1	5	20	10			
Milford-Italy						1	88	25		3	1	4	18	25	10	8	9
Mexia-Jones	4	2	6	8	6	30	169	70	3	3	1	7	50	14	8	12	14
Mexia Cir.	1	24	32	32	8	2	380	40	2	8	3	15	160	16	20	4	6
Pelham Cir.	6	4	4	219	4	5	221	36		3	3	25	148	41	42	12	5
Sherman Cir.	13		10	26	19	1	130	18	1	1	2	14	90	13	14		10
Wichita Falls Cir.	4						57	25			2	11	40	36	6	1	12
El Paso	3		5		80	12	82	27		2	1	8	70	25	12	8	5
Ferris-Lancaster	1	1	1	1			55			3	2	8	52	12			
	64	38	186	489	190	157	3842	860	101	62	35	226	1606	504	269	68	148

STATISTICIAN'S REPORT—SAN ANTONIO DISTRICT (Continued)

Beeville-Petus	2		2	18			42	4	8		2	8	45	15	12	1	8
Belmont Cir.	1	1	4	12			274	10		1	2	9	66	6			
Cuero		4	4		4		170	30		6	1	12	55	12	18		15
Corpus Christi	10	6	3	16		4	99				1	5	27	11		8	
Eades-Lavenia		12		12	4		80	15		4	3	4	28	2	10	3	
Floresville-Runge	5	3	3	63	3		63	1		2	2	8	40	16	1	12	
Gonzales-Elm	9	8	42	42	42		140	50		2	2	20	100	20	2	10	40
Gonzales Cir.	16		2	4			169	21	1	2	2	19	90	7			
Hondo-Uvalde	3	4	8	8	4	10	11		1	2	2	10	40	20			
Kerrville	4		2				111	20	3	1	1	8	58	12	12		10
Kingsville Cir.	1	1	5	4	4		117	38	4	2	2	16	40	22	20		
Nixon Cir.			2	59	2		59	13	6	3	1	9	22	6			
Pearsall			2				23				1	2	40	6	1		
Pleasanton Cir.	10				5		25	3			1	3	15	2	1		
S. A.—E. St. Paul	4	3	13			15	245	88	2		1	12	90	20	20	10	18
Jacobs	1	4	37	23	29	8	385	62	2	8	1	15	175	32	18	11	10
Jones	15	1	3	79	3		79	35		2	1	14	45				1
Lincoln	6		2	15	2	3			3	1	1	8	33	9	10	6	
St. Paul	5	5	51	739	12	39	790	116	4	19	1	42	387	289	18	26	21
Sanford	4	1	2	25		1	76	16	31	7	1	6	30	10			
S. A. Heights																	
San Antonio																	
Seguin-Olmos		6	6	26	5	2	216			2	2	14	115	20			
Yorktown																	
	108	53	193	1139	114	122	3204	424	64	64	31	232	1457	536	153	80	122

STATISTICIAN'S REPORT—VICTORIA DISTRICT (Continued)

	Baptisms		Prep. Mem'ship		FULL MEMBERSHIP						Church Schools				Epworth Lea.		
	Children Baptized	Adults Baptized	Prep. Members Rec'd during year	Prep. Members now on Roll	Rec'd from P. M. or on Profes'n of Faith	Rec'd by Transfer	Full Mem's now on roll including Inactive Members	Inactive Members	Removed by Transfer	Deaths During Year	No. Church Schools	Officers & Teachers	Enrolled in all Depts. Inc. officers teachers, Pup., Nur'y D., H. D.	Church School Cur. Expense	Senior & Yo'g People	Intermediate	Juniors
Alleyton							58	28		2	1	3	17	2			
Altair Cir.			2	172			172			3	2	8	60	8			
Bloomington Cir				33			33	8			2	6	36	5	20	8	12
Cologne Cir.	1	18	18	18			118			2	3	9	80	8	36	9	12
Columbus Cir.							235	100		5	1	12	98	25	24	15	12
Edna Cir.	21	5	15	15	26	6	265		1	4	3	15	75	34	15	10	20
Garwood Cir.	2	2	7	76	9		76	16		1	3	9	45	9			
Goliad Cir.			7	17	1		119	20		2	1	8	43	8	28	5	12
Hallettsville Cir.	8	2	8	35	3	1	177				1	8	57	12	12	16	19
Oakland Cir.	24	5		14	20		227	57	2	4	4	28	115	25	25	18	20
Schulenburg					2		232	135		7	2	13	45	8	20		12
Sublime Cir.					1		38	10		2	2	6	14	2			
Victoria	1	3	4		27	1	208			3	1	12	70	75	20	10	10
Wharton Cir.	4	3	1	121		1	120	55	8	2	2	14	60	48	28		15
Weimar Cir.			1	24	1		14	10			1	1	6				
Yoakum	6	1					153	40		1	2	9		13	15		10
Total	52	39	63	552	88	9	2446	449	11	38	31	161	900	282	243	101	154

STATISTICIAN'S REPORT—WACO DISTRICT (Continued)

Aquilla-West		3	5	3	2	1	90	30		3	3	16	32	6	2		10
Bowman-Regan	6	1	8	103		1	103	19		4	2	11	40	12	15		20
Bremond Cir.	2					1	100	7		1	3	14	45	13	6		
Calvert	11		19	17	19	2	166	36	2	1	1	8	50	10	18		10
Cameron Cir.			2		1	1	7		2		1	1	5	1			
Chilton Cir.	1		3	3	5		115	35	4	1	2	6	50	12	30		25
Groesbeck				6		2	57	24		1	1	15	44	22	14	8	12
Marlin	10	17	13	6	19		283	60		3	1	12	115	89	25	10	18
Mart- Springhill	12	6	1	1			144			3	2	14	58	24			
Milam Cir.	2			2		2	138	50		3	2	12	80	6	6	6	10
Rocky-Cedar						3	160	60	4	3	20	10	60	18	10	26	
Springfield Cir.			4	30	3	1	58	38			2	7	20	5	10		
Satin Cir.			9	38	3	1	140	52	3	2	1	7	62	8			
Valley Mills Cir.	3	9	5	9	1		52	14		2	1	7	45	11	15	26	
Brack-Majors							100										
Jones Chapel	3	4	5	2	2		122	15	4	2	1	8	60	15	12		
Mt. Zion	8	2	28	5	10	8	150	50	8	5	1	7	50	15	15	10	
St. James, Waco	6	2	6	20		20	350	50	1	5	1	12	122	35	24		16
Moody-Gatesville	1		1	6			40	13			2	7	23	14	6	9	10
Hubbord-Dawson			3	42	1		46	1	2		2	7	40	8	6	6	6
Rosebud		1		2		1	15	10									
Total	66	45	113	310	63	44	3988	569	30	39	31	108	1008	327	214	101	152

STATISTICIAN'S REPORT—RECAPTULATION (Continued)

Austin	25	129	215	53	68	3562	512	17	55	36	234	1194	351	285	122	186	
Dallas	64	38	186	489	190	157	3842	860	101	62	35	226	1606	504	269	68	148
San Antonio	108	53	193	1139	114	122	3204	422	64	64	31	242	1457	536	153	80	122
Victoria	72	39	63	552	88	9	2446	449	11	38	31	161	900	282	243	101	154
Waco	66	45	113	310	63	44	3888	569	30	39	31	182	1008	329	214	101	152
Total	388	200	684	2705	508	400	16942	2814	223	258	164	1045	6165	2002	1164	472	762

STATISTICIAN'S REPORT—AUSTIN DISTRICT (Continued)

NAMES OF CHARGES	CHURCH PROPERTY									MISCELLANEOUS			
	No. Church Bldgs.	Estimated value of Land & Bldgs.	No. of Parsonages	Estimated value of Land & Bldgs.	Value of other Prop., Endow., Bonds, etc	Pd. by the Charge for Bldg. & Improv.	Pd. on old indebtedness not incl. Int.	Present indebtedness including debt on Current Expense	Cur. Ex. not includ. Ministerial Supp't.	Local Preachers	Subscribers to the Advocates	Amt. contributed by Ladies Aid Society	No. of Congregat'ns. or Preaching Places
Austin Circuit	4	\$ 4900	1	\$ 400		\$ 17	\$ 10	\$ 18	\$ 9		2	\$ 4	4
Simpson	1	3000	1	3000	800		330	1500	200	2	4	54	1
Wesley	1	75000	1	1500	1500		2600	1900		1	30		1
Belton Circuit	2	8000	2	2000		50	24		50		1	1	2
Brownwood Circuit	2	500	2	2250		10			20	1	1	15	2
Cedar Creek	3	4000	1	400					10				3
Fayetteville Circuit	2	1000	1	400			40	140			2	5	2
Georgetown Circuit	4	10000	2	1000		200	25	4000	220	1	4	2	4
Hutto	1	500											1
Kellsbranch	1	2500	1	700								7	1
Lampasas	2	1000	1	500					50		2	10	2
Littig	2	1000	1	1000				214			3		3
Llano-Mason	2	2000	1	1550					50		3		3
Luling Circuit	3	4750	1	1000		400		2000	100	1		12	3
LaGrange Circuit	3	4000	1	500				24	81	1		4	3
Lockhart Circuit	1	4600	1	900		8		194	27	2	1	8	2
San Angelo Circuit	1	1500	1	2150			1000						1
Smithville	4	3800	2	500		300	1000			1	4		4
Temple-Bartlett	2	8500	1	10000		1500		518	3407	2		10	2
Giddings Circuit	2	610		610				5	173	2	1		
	36	139160	19	19760	2300	1185	5852	13570	833	13	55	115	37

STATISTICIAN'S REPORT—DALLAS DISTRICT (Continued)

Amarillo Cir													
Abilene	1	1500	1	8		60			23	1			1
Corsicana	1	1600	1	1000					20		1		1
Denison	1	4000	1	1600			200	84	100	2	4	18	1
Dallas—Mill City									50	1		2	1
Mt. Zion													1
St. Paul	1	95000	1	2000	1	69	4300	33290	725		20	400	1
Trinity	1	4500	1	2200			320	840	75	1	2	18	1
Warren-Wesley	2	2500	1	600		25	5	60	56	1	3	4	2
Ennis-Waxahachie	2	2000	2	1000		2			40		1	20	2
Ft. Worth—Cowan	1	1000								1	2	4	1
Cogswell	1					59	36	225	16		1	12	1
St. Andrews	1	15000	1	3000		5000		1400	8000	4	60	100	1
Thompson	1	5000	1	1500	100	186	186	2341	166	2			1
Lubbock Cir	1	1500		1500				761	20			5	1
Milford-Italy	2	1900	1	600		7		12	18	1		4	2
Mexia-Jones	1	2300	1	1200		528		315	212	3	1	20	1
Mexia Cir.	3	2000	1	700					6	2	1	2	3
Pelham Cir.	3	6800	1	1000					78	1		12	3
Sherman Cir.	2	3900	2	700			64	50	158	1	3	50	2
Wichita Falls Cir.	2	2000		300	500		100			3	1	10	2
El Paso	1						510	625		2	3	8	1
Ferris-Lancaster	1	2800		2800		112	167		42	1	4	8	2
	29	134200	16	\$20000	\$ 601	\$ 6051	\$ 6139	\$40003	\$10805	28	107	\$ 698	32

STATISTICIAN'S REPORT—SAN ANTONIO DISTRICT (Continued)

Beeville-Petus	1	500	1	800		50		10	25	1	3	5	2
Belmont Cir.	2	2600	1	500			850			2		5	2
Cuero	1	2100	1	1000					54			15	2
Corpus Christi	1	3500	1	1000			195	2195	160		1	14	1
Eades-Lavenia	2	1000	1	250		20	20		2	1		1	3
Floresville-Runge	2	2000	1	600			112	40	12				2
Gonzales-Elm	2	3000	1	800		20	10		50	1	1		2
Gonzales Cir.	2	2550	1	800		40	68	129		1	4		2
Hondo-Uvalde	2	2010	1	2220			36		24			12	2
Kerrville	1	5000	1	500							3	66	1
Kingsville Cir.	2	2400	1	800				1200	65	1		6	2
Nixon Cir.	3		1	2000									3
Pearsall		1200									1		2
Pleasanton Cir.	1	750								2			1
S. A.—E. St. Paul	1	10000	1	3000		100	333	4500	183		1	40	1
Jacobs	1	10000	1	2000			350	4500	175	3	2	5	1
Jones	1	2000	1	1200			40	2575	20	2	2		1
Lincoln	1	1800				45	418	480	497	2		1	1
St. Paul	1	75000	1	3000	29000	433			1187		5	62	1
Sanford	1	4000	1	2000		110		350		1	5	6	1
S. A. Heights													
San Antonio													
Seguin-Olmos	2	2500	1	1000						2	1	17	2
Yorktown													
	31	133900	18	\$24470	\$29000	\$ 808	\$ 2467	\$15979	\$ 2454	19	27	\$ 255	34

STATISTICIAN'S REPORT—VICTORIA DISTRICT (Continued)

NAMES OF CHARGES	CHURCH PROPERTY								MISCELLANEOUS				
	No. Church Bldgs.	Estimated value of Land & Bldgs.	No. of Parsonages	Estimated value of Land & Bldgs.	Value of other Prop., Endow., Bonds, etc	Pd. by the Charge for Bldg. & Improv.	Pd. on old indebtedness not incl. Int.	Present indebtedness including debt on Current Expense	Cur. Ex. not includ. Ministerial Supp't.	Local Preachers	Subscribers to the Advocates	Amt. contributed by Ladies Aid Society	No. of Congregat'ns. or Preaching Places
Alleyton -----	4	2500	1	6			8	2	2				4
Altair Cir. -----	2	300	1	800			39	5400		1	1	2	2
Bloomington -----		800		800	800						1		2
Cologne Cir. -----	3	2500	1	500						3	2		3
Columbus Cir. -----		500	1	500		100		10	100	1		5	1
Edna Cir. -----	3	4000	1	500		20		22	72	2	6		3
Garwood Cir. -----	2	1500				85		4		1		3	3
Goliad Cir. -----	1										5	16	1
Hallettsville Cir. -----	1	3000	1	500		25			36		2		2
Oakland Cir. -----	4	5000	1	1500		75	200			1	4	3	4
Schulenburg -----	3	2400		2400					49	3	2	3	3
Sublime Cir. -----	3	1200	1	300		25							3
Victoria -----	1	5000	1	2500		28	230		120	1	12	6	1
Wharton Cir. -----	2	3000				4		7	10	6	4		2
Weimar Cir. -----	2	500		500						1			2
Yoakum -----	2	3030	1	1200					20				2
	33	\$10830	10	\$10616	\$ 800	\$ 362	\$ 478	\$ 5445	\$ 409	20	39	\$ 38	\$ 38

STATISTICIAN'S REPORT—WACO DISTRICT (Continued)

Aquilla-West -----		\$ 800				\$ 23	\$ 4	\$ 65	\$ 26			\$ 4	3
Bowman-Regan -----	2	2000	1	2500		21					3	6	2
Bremond Cir. -----	3	3000	1	150		15		80	50	2		10	3
Calvert -----	1	3500	1	1000		80			150	2	8	20	1
Cameron Cir. -----	1	480		400								1	1
Chilton Cir. -----	2	4500	1	600					22	4	3	5	2
Groesbeck -----	1	2500	1	1000		5	12		18	1		6	1
Marlin -----	1	10000	1	3000				5000	87	1	5	52	1
Mart- Springhill -----	2	4500	1	1000		17	40	265	19			5	2
Milam Cir. -----	1	700	1	150						3	2		2
Rocky-Cedar -----	1	1700	1	500		250			50	3	3	25	2
Springfield Cir. -----	1	800				15					2		2
Satin Cir. -----	3	2500					12	485	33		1	7	3
Valley Mills Cir. -----	1	1500	1	450	60		8		30		1	5	2
Brack-Majors -----													
Jones Chapel -----	1	2000	1	1500			30	900		1	3	20	1
Mt. Zion -----	1	4000	1	1000		200	200	900	70	1	4		1
St. James, Waco -----	1	87700	1	4000		400	300	2600	40	1	9	40	1
Moody-Gatesville -----	2	4000		4250						1	1	30	2
Hubbord-Dawson -----	2	4000	1	500		40		9	42	1	3	8	2
Rosebud -----	1	200		300							1		1
	30	140300	14	\$20600	\$ 60	\$ 1045	\$ 606	\$ 8500	\$ 696	21	89	\$ 243	36

STATISTICIAN'S REPORT—RECAPTULATION (Continued)

Austin -----	36	139160	19	\$19760	\$ 2300	\$ 2485	\$ 5852	\$13570	\$ 833	13	55	\$ 115	\$ 37
Dallas -----	29	134200	16	20000	601	6051	6139	40003	10805	107	107	698	32
San Antonio -----	31	133900	18	24470	29000	808	2467	15979	2454	27	27	255	32
Victoria -----	2	40830	10	10616	800	362	378	5445	409	39	39	38	38
Waco -----	20	140300	14	20600	60	1045	606	8500	896	49	49	243	35
	159	588390	77	\$95446	\$32761	\$10751	\$15542	\$83479	\$15397	101	277	\$ 1349	176

CONFERENCE TREASURER'S REPORT—AUSTIN DISTRICT

NAME OF CHARGES OR CHURCHES	Total Cash Payment For A. I. Purposes	World Service: Designated				Total World Service on Apportionment	Children's Day Fund (Ed. Ed'n.)	Woman's Foreign Missionary Society	Woman's Home Missionary Society	Total Disciplinary Benevolences
		World Service Distributable	Foreign Missions	Home Missions and Church Extension	Education					
Austin Circuit	2	5			2				8	
Simpson Tab.	6			17	25			6	38	
Wesley Chapel	105				100		5	25	130	
Belton Cir	4	12			9				23	
Brownwood Cir.	7	23							23	
Fayetteville Cir.	9	8			2				10	
Georgetown Cir.	19	50			6	1		2	60	
Littig Cir.	2	2			2				4	
Luling Cir.	10			57	1				63	
Llano Cir.	4	9			25			2	36	
Lockhart Cir.		10						4	14	
Lagrange Cir.	12	4			6				25	
San Angelo	9			15						
Smithville Cir.	1			17					27	
Temple	18	20							20	
Winchester Cir.									10	
Giddings Cir.	1	6							6	
Total	209	151		106	178	1	6	39	477	

CONFERENCE TREASURER'S REPORT—DALLAS DISTRICT

Abilene	5										
Amarillo											
Corsicana		1			1				12		
Dallas: Mill City		2	1		2				4		
Mount Zion	1	5			1				6		
Trinity	8			13	10			6	27		
Warren	6			13	1		2		16		
St. Paul	210	106			130			13	249		
Denison	28	13			13				27		
Ennis											
El Paso		11			13				24		
Ferris	1	10			4				14		
Fort Worth: St. Andrews	25			90	50			5	162		
Thompson Chapel	12	5		18	9			5	37		
Cogswell Chapel	8				4				4		
Cowan Chapel	1	5			4			1	10		
Lubbock Circuit		3							3		
Mexia: Jones Chapel	2	9		12					21		
Mexia Circuit	2				6				6		
Milford Circuit	4	5			3				8		
Pelham	27			27	10		1		38		
Sherman Circuit	21			27	10			2	29		
Waxahacie	7				4				4		
Wicrita Falls Circuit	9				30		2	4	36		
Total	376	173	1	190	305	682	5	6	47	737

CONFERENCE TREASURER'S REPORT—SAN ANTONIO DISTRICT

Bellville Circuit	4	5		1			8			8	
Belmont Circuit		2		2	5		9		2	11	
Corpus Christi	30	6			20		26		1	27	
Cuero Circuit	3	46			24		60	5		65	
Eades Circuit					2						
Floresville Circuit	2	5			15		20		1	21	
Gonzales Circuit	17	5			12		17	3		20	
Gonzales & Elm	1	4			2		6			6	
Hondo Circuit	19	10			2		18	1	1	20	
Kerrville	8	12		1	15		26		5	31	
Kingsville Circuit		23					23			23	
Nixon Circuit	8	3			21		24			24	
Pearsall											
Pleasanton Circuit	5	5			1		6			6	
San Antonio: E. St. Paul	21	31		1	27		59		4	63	
Jacobs Chapel	19	36		1	4		58		2	60	
Lincoln Heights	2	9		1	7		14		5	19	
Jones Chapel	1	4								4	
St. Paul	164	160		5	191		346	4	7	427	
Sanford's Chapel	3	4			18		22		7	22	
San Antonio Heights							2				
South San Antonio											
Seguin & Olmos	31			1	23				7	30	
Total	388	370		13	388	744	7	6	42	884

CONFERENCE TREASURER'S REPORT—VICTORIA DISTRICT

NAME OF CHARGES OR CHURCHES	Total Cash Payment For All Purposes	World Service: Designated					Total World Service on Apportionment	Children's Day Fund (Bd. Ed'n.)	Woman's Foreign Missionary Society	Woman's Home Missionary Society	Total Disciplinary Benevolences
		World Service Distributable	Foreign Missions	Home Missions and Church Extension	Education	Temperance, and Pro. and Pub. Mor.					
Alleyton Circuit											
Altair Circuit	9				11	11				11	
Bloomington Circuit					10	10				10	
Bologne Circuit					2	2				2	
Columbus		10								10	
Edna Circuit	5			16	12	28				29	
Farwood Circuit					25	25				25	
Goliad Circuit	6	8				8				8	
Hamlettsville Circuit	3			15	16	31			11	42	
Shulenburg Circuit	9		9		6	15	1			16	
Oakland Circuit	2				5	5				5	
Sublime Circuit		1			8	9				9	
Victoria	20			66	19	85				85	
Wharton Circuit				3	7	10				10	
Weimar Circuit		2			10	12				12	
Wookum Circuit		14				14			4	18	
	54	40	9	100	131	265	1		15	292	

CONFERENCE TREASURER'S REPORT—WACO DISTRICT

Aquila-West Hillsboro	11	10					11			12
Bowman-Reagan	14	13					16		1	17
Bremond Circuit		8					8		1	9
Calvert	23	9			12		21		4	25
Cameron	2	2			2		4			4
Chilston-Mooreville	8	20			20		20			20
Groesbeck	5	20					20	1	2	23
Hubbard-Dawson	16	15			7		15			15
Marlin	29	18	40		23		81		15	96
Mart, Springhill	12	1			2		3			3
Milam, Grove Pt., Sullivan	3									
Rosebud, Lott	8	2								2
Rockey, Cedar	12			14			14		8	22
Springfield, Kosse	4	2					2			2
Satin, New Zion, Rising Sun	13	11			5		16		6	22
Valley Mills, Crawford	10			10	7		17			17
Brack, Majors	20	6		18	5		29		3	32
	15	9			6		15		7	22
Mount Zion	12			34	20		59	2	10	71
St. James	23			46	21		67		10	77
Moody-Gatesville	11	14			7		21		21	
	251	151	40	122	71		439	2	1	88

CONFERENCE TREASURER'S REPORT—RECAPITULATION

Austin	209	151		106	178	1	382	6		39	477
Dallas	376	173	1	190	305		682	5	6	47	737
San Antonio	338	370		13	388		744	7	6	42	884
Victoria	54	40	9	100	131		265	1		15	292
Waco	251	151	40	122	71	5	439	2	1	88	491
	1228	885	50	531	1073	6	2512	21	13	231	2881

CONFERENCE TREASURER'S REPORT—AUSTIN DISTRICT (Concluded)

NAME OF CHARGES OR CHURCHES	SUPPORT OF				Total other Cash	Educational		Area Expense Fund	Total Annual Conference Benev., etc.	Grand Tot. Disciplinary and Ann'l Conf. Benev. and Other Cash Items
	District Supt.	Bishops (Episcopal Fund)	Conference Claimant	Gen'l Conference Expense		S. H. C.	Minutes Publication Fund			
Austin Cir.	37				37	1	1	2	3	50
Simpson Tab.	144				147	25	6	18	95	240
Wesley Chapel	240	20	25	5	290	25	9	37	66	491
Belton Cir.					73	4	4	8	16	112
Brownwood Cir	80	2	2		84	3	2			89
Fayetteville Cir.	50	2	2		54	4	4	8	16	142
Georgetown Cir.	74	4	9		87	17	6	10	33	178
Littig Cir.	38	1	1		40		3		3	47
Luling Cir.					147	5	3		25	235
Llano Cir.	101	2	1		104	7	1	12	20	164
Lockhart Cir.	108				108		3	5	8	130
LaGrange Cir.	92		5		97	8	6	4	18	140
San Angelo	116	5	2		123	55	2		57	190
Smithville Cir.	148				148	20	5	2	32	192
Temple	135	3	3		141	2	5	8	15	176
Winchester Cir.										
Giddings Cir.	13	1			14	3		3	8	28
	1376	40	50	5	1694	179	60	117	415	2594

CONFERENCE TREASURER'S REPORT—DALLAS DISTRICT (Concluded)

Abilene	40	1	1		44	2	1	5	8	52
Amarillo										
Corsicana	50	2	10		52		2	3	5	69
Dallas: Mill City		2			2	2			2	9
Mount Zion	11	1	1		13					19
Trinity	81	4	3	2	19		5	24	29	142
Warren	38	3	2		43		4	5	9	68
Saint Paul	280	25	50		481		3	20	39	623
Denison	77	8	5		90		6	8	14	131
Ennis										
El Paso	121	1	1	2	116	6	1	2	9	149
Ferris	72	3	1	2	78		2		2	93
Ft. Worth St. Andrews	260	15	15	10	300	28	6	20	54	521
Thompson Chapel	100	4	3	2	116		7	8	15	161
Cogswell Chapel	10	2	1		13	3	1	2	6	23
Cowan Chapel	40	1			41	4	1	4	9	60
Lubbock Circuit		2		1	3	2	2	1	5	11
Mexia: Jones Chapel	62	2	2	1	67	12	1	5	18	106
Mexia Circuit	100	4	2	2	108	6	1	6	13	127
Milford Circuit	58	2	1		61	1	2	2	15	73
Pelham	150	7	10	4	172	1	4	10	14	224
Sherman Circuit	79	10	7	1	97	12	4	2	18	144
Waxahachie	40	2	2		44	3	1	4	8	56
Wichita Falls Circuit	70	3	8	3	93		4	10	14	148
	1739	104	125	30	2053	82	58	141	306	3004

CONFERENCE TREASURER'S REPORT—SAN ANTONIO DISTRICT (Concluded)

Beville Circuit	42	1	1		44	1	1	4	6	56
Belmont Circuit	64	3			67		3	3	6	84
Cornus Christi	80	5	7	2	94	13	4	10	28	149
Cuaro Circuit	84	3	2		89		3	12	15	169
Eades Circuit	2		1		3					3
Floresville Circuit	56	2			58	22	5	3	30	107
Gonzales Circuit	83	3	3		89	1	4	5	10	119
Gonzales & Elm	79	2		1	51		3		3	61
Hondo Circuit	85	1	2		88	2	3	3	8	115
Kerrville	100	2	1		103	1	4	12	17	154
Kingsville Circuit	100	12			112	13			13	148
Nixon Circuit	48	3	3	1	55		3	8	11	90
Pearsall										
Pleasanton Circuit	60	3	2		65		1		1	77
San Antonio: E. St. Paul	80		20	6	106	5	4	18	22	191
Jacobs Chapel	129	12	5		146	5	6	5	16	222
Lincoln Chapel	38	1			40	6	4		10	67
Jones Chapel	13	2	1		16			4	4	20
St. Paul	300	40	80	20	440	175	18		228	1085
Sanford's Chapel	38	2			40	1	5	4	10	72
San Antonio Heights	100									
South San Antonio										
Seguin & Olmos		5	8	2	115	10	8	77	35	181
	1581	102	135	32	1821	255	79	163	473	3167

CONFERENCE TREASURER'S REPORT—VICTORIA DISTRICT (Concluded)

NAME OF CHARGES OR CHURCHES	SUPPORT OF			Gen'l Conference Expense	Gen'l Conference Expense	Educational		Minutes Publication Fund	Area Expense Fund	Total Annual Conference Benev., etc.	Grand Tot. Disciplinary and Ann'l Conf. Benev. and Other Cash Items
	District Supt.	Bishops (Episcopal Fund)	Conference Claimant			S. H. C.					
Alleyton Circuit	11				11			2		2	13
Altair Circuit	38	2	2		42	15		1		16	53
Bloomington Circuit	12				12			2	5	7	29
Cologne Circuit	63	5			68			4	10	14	84
Columbus	35	9			54			4	6	10	64
Edna Circuit	100		3		103	10		6	17	33	165
Garwood Circuit	89	3			83			3	9	12	120
Goliad Circuit	53	3	4		60	12		1	31	44	112
Hallettsville Circuit	105		2	1	108			2	11	13	163
Oakland Circuit	40	1	1		42			2	2	4	51
Schulenburg Circuit	72	7	2		81	8		3	8	19	116
Sublime Circuit	12				12			1		1	22
Victoria	126	1			127	5		5		10	237
Wharton Circuit	66	1			67	4		4	9	17	84
Weimar Circuit	10	3	1		14			4	7	11	37
Yoakum Circuit	32				32			2	7	9	59
	855	35	15	1	916	54		46	122	222	1404

CONFERENCE TREASURER'S REPORT—WACO DISTRICT (Concluded)

Aquilla, West, Hillstoro	44	3	3	1	51	2		1	2	5	66
Bowman, Reagan	60	3	3		66			3		3	86
Bremond Circuit	24				24	5		8	4	17	50
Calvert	41	5	5		54	8		5		13	92
Cameron	12	1	1		14	2		1	1	2	16
Chilton, Mooreville	39	2	3		63	25		2	3	7	92
Groesbeck	72	5	2		79			3	8	36	138
Hubbard, Dawson	44	5	4		53	9		3	3	15	79
Marlin	150	10	5		165	38		15	10	63	319
Mart, Springhill	62	3	3		68	3		2	4	9	80
Milam, Grove Pt. Sullivan	40	3	1		44	1		1	3	5	49
Rosebud, Lott	18	2	2		22	1		1		2	26
Rocky, Cedar	67	5	2		74	9		3	5	17	113
Springfield, Kosse	9	1	1		11			2	2	4	17
Satin, New Zion, Rising Sun	80	3	5		88	7		1	7	15	125
Valley Mills, Crawford	40	3	2		45	2		5	4	11	73
Bracks, Majors	76	9	2	1	88	8		4	6	18	138
Jones Chapel	65	7	5		77	2		6	8	16	115
Mount Zion	80	12	2		94	8		6	6	20	185
Saint James	195	15	15		225	38		3	12	53	356
Moody, Gatesville	42	3	5	1	51	2		4	5	11	81
	1258	100	71	3	1456	170		79	93	332	2292

CONFERENCE TREASURER'S REPORT—RECAPITULATION (Concluded)

Austin	1376	40	50	5	1694	179		60	117	415	2594
Dallas	1739	104	125	30	2053	82		50	141	306	3004
San Antonio	1581	102	135	32	1821	255		79	163	473	3167
Victoria	855	35	15	1	916	54		46	122	222	1404
Waco	1258	100	71	2	1456	170		79	93	332	2291
	6809	381	396	70	7949	740		814	636	1748	12460

SUNDAY SCHOOL STATISTICS—AUSTIN DISTRICT

NAMES OF CHARGES	No. of Schools	No. of Classes Under 18 Years	No. of Classes Using Closely Graded Lessons	No. Organized Depts. Meeting Separately	ENROLLMENT					Pupils, inc. Home Dept. (but not bapt'd children) Church or Prep. Members	Acces. during yr. to Cr. from Ch. School
					Officers and Teachers	up's of all Grades	Nursery Roll	Home Department	Total Enrollment		
Austin Circuit	2	2			9	41			41	24	
Simpson	1				10	50			50	20	
Wesley	1		2	8	25	225	30		225	100	
Belton Circuit	2	5	8		20	130			130	70	12
Brownwood Circuit	2	5			10	40			40	25	3
Cedar Creek Circuit											
Fayetteville Circuit	2	3	4		14	40			40	24	
Georgetown Circuit	4	10			20	136	12		136	80	12
Giddings-Leo	2	2			9	30			30	10	
Hutto Circuit											
Kellsbranch	1	3	4		9	50			59	25	
Lampasas Circuit	2	2			10	22			32	15	
Littig	2	2			8	30			30	20	5
Luling Circuit	3	9			29	128	50	20	128		
Llano-Mason	3				6	44			44	35	
LaGrange Circuit	3	5			10	60			60	40	
Lockhart Circuit	2	2			14	52			52		9
San Angelo Circuit	1	4	4		10	48			48	32	
Smithville	4	3			22	75			97	55	
Temple and Bartlett	2	6			14	65	10		65	30	
TOTAL	37	63	22	8	253	1266	102	20	1307	705	41

SUNDAY SCHOOL STATISTICS—DALLAS DISTRICT

Amarillo Cir.											
Abilene	1	3	3		6	40			46	22	
Corsicana	1	2	2		4	16			20	10	
Denison	1	64			9	64	4		77	28	
Dallas: Mill City	1		1		6	17	5		16	10	
Mount Zion											
Saint Paul	1	9			22	300			300	200	10
Trinity	1	5	2	3	8	40			48	36	36
Warren-Wesley	2	4			15	50	5		50	30	14
Ennis-Waxahachie	2				16	50			50	20	
El Paso	1	3	3	3	7	70			70	35	
Fort Worth: Cowan	1				5	15			15	8	
Cogswell											
Saint Andrews	1	15	20	5	53	200	10	15	278	150	15
Thompson	1	3	3	3	8	50	8		50	35	
Lubbock Cir.	1	1	2		5	15			20	15	
Milford-Italy	1	2	1	1	4	16	5	3	18	20	
Mexia-Jones	1	4	1		7	50			50	30	30
Mexia Cir.	3	3	2	2	15	160			160	75	
Pelham Cir.	3	4			25	148	10		148	192	
Sherman Cir.	2	4	2	6	14	56			70	35	57
Wichita Falls Cir.	2	3	2	1	11	40			40	28	20
Ferris-Lancaster	2	3			8	52			52	30	
TOTAL	29	132	44	24	248	1449	47	18	1578	1009	172

CHURCH SCHOOL STATISTICS—SAN ANTONIO DISTRICT

Beeville-Pettis	2	3			8	42			50	15	
Belmont Cir.	2				9	66			75	50	
Cuero	1	3	5		12	55			67	35	30
Corpus Christi	1	2			5	27			29	18	
Eades-Lavernia	1	2			1	12			13	8	
Floresville-Runge	2	2			8	40			48	30	3
Gonzales-Elm	2	8	8		20	160			180	60	3
Gonzales Cir.	2				19	90			109	48	
Hondo-Uvalde	2	6	6	2	8	28	36		40	30	10
Kerrville	1	4		5	8	40		6	54	30	
Kingsville Cir.	2	4			16	40			56	20	35
Nixon Cir.	1	3			7	22			29	15	
Pearsall	1	1		1	3	14				10	
Pleasantown Cir.	1				3	15			50	10	
San Antonio: E. St. Paul	1	7	8	7	12	90			103	50	
Jacobs	1	4	5	2	15	121			186	84	4
Jones	1	4	3		14	45		4	49	40	
Lincoln	1	2	2	4	8	38	15	45	71	15	
St. Paul	1		281	9	42	387	5	26	460	312	64
Sanford	1				6	30			36	20	
San Antonio Hghts.											
S. San Antonio											
Sequin-Olmos	2				14	115			129	40	
Yorktown											
TOTAL	30	55	312	27	238	1485	20	81	1834	940	146

CHURCH SCHOOL STATISTICS—VICTORIA DISTRICT

NAMES OF CHARGES	No. of Schools	No. of Classes Under 18 Years	No. of Classes Using Closely Graded Lessons	No. Organized Depts. Meeting Separately	ENROLLMENT					Pupils, inc. Home Dept. (but not bapt'd children) Church or Prep. Members	Acces. during yr. to Cr. from Ch. School	
					Officers and Teachers	Nursery Roll	Pup's of all Grades	Home Department	Total Enrollment			Average Attendance
Alleytown	1				3	17			17	5		
Altair Cir.	2				8	60			60	30		
Bloomington	2				6	36			36	18	18	
Columbus Cir.	1	7	8	8	12	76		10	98	45		
Cologne Cir.	3		3		9				80			
Edna Cir.	3	8	1		15	60			75	50		21
Garwood Cir.	3				9	45			45	15		
Goliad Cir.	1	5			12	31	5		43	10		4
Hallettsville Cir.	1	2			8	57			57		36	
Oakland Cir.	4	3	3	4	28	128			128	100	100	20
Schulenburg	2	2			13	54			54	18		15
Sublime Cir.	2				6	14			14			
Victoria	1	3	6	6	12	70			70	60		
Wharton Cir.	2	5	5	8	14	60			45	22	3	
Weimar Cir.	1	4			14	6			8	3		
Yoakum Cir.	2	7	2		9	55			64	26		
	31	46	20	26	168	769	5	10	864	402	158	60

CHURCH SCHOOL STATISTICS—WACO DISTRICT

Aquilla-West	3	2			16	32			48	28	2	3
Bowman-Reagan	2	2			11	40			40	20	103	8
Bremond Cir.	3				14	45			45	35		
Calvert	1	5	6	3	8	50			50	25	17	11
Cameron Cir.	1				1	5			5	5		
Chilton-Mooreville	2	3	3		12	50			50	30	15	
Groesbeck	1	2	3		6	38			44	18		
Marlin	1	3		6	12	115			127	80		
Mart-Springhill	2				14	58			58	20		
Milam Cir.	2	3			12	80			80	50	3	
Rocky-Cedar	2				10	60			60	80	30	
Springfield Cir.	2	2			9	20			20			
Satin Cir.	1	3		4	7	55			63	40	37	9
Valley Mills Cir.	1	3			9	45			45	30		2
Bracks-Majors	2				6	30			36			
Waco: Jones Chapel	1	3			8	62			62	30	35	2
Mt. Zion	1	3			7	50			50	28	20	10
St. James	1	7	6	8	12	122	12		122	35	6	
Moody-Gatesville	2	3		3	7	23			18	14	1	6
Hubbard-Dawson	2	4			7	27		12	46	32		
Rosebud-Swann												
	33	48	18	24	188	1007	12	12	1068	560	269	51

CHURCH SCHOOL STATISTICS—AUSTIN DISTRICT (Concluded)

NAME OF CHARGES	FINANCES				Leadership Training			No. of Vacational Schools	No. Teachers and Helpers	Pupils Enrolled	WEEK DAY			
	Rally Day Off'g	Pd. by Chr. Sch. to W'd Ser. not inc. RDO	Pd. by Chr. Sch. to All oth. Benevolences	Exp. for Lesson Materials, Sup., etc.	No. Methodist Training Classes	Enrollment	No. Interdenominational Classes				Enrollment	Total Expenses of Vacational Schools	No. Methodist Week Day Schools	No. Pd. Teachers and Helpers
Austin Circuit		6	5	6										
Simpson				48										
Wesley	25	75		100	2	15		1	10	69	10			
Belton Circuit		5	5	30				1	3	24	2			
Brownwood Cir.	2	5	5	10	1	10								
Cedar Creek Cir														
Fayetteville Cir.		3		6										
Georgetown Cir	2	12	12	24	1	12		1	6	40	5			
Giddings-Leo				3										
Hutto Cir														
Kellsbranch														
Lampasas Cir.			5	10										
Littig		4	2	2										
Llano-Mason		4		2										
Luling Cir.			14	12										
LaGrange Cir.	5	5		16										
Lockhart Cir.				12										
San Angelo Cir.				15										
Smitrville		17		27	2	22								
Temple-Bartlett		6	24	30										
	34	142	72	343	6	59		22	3	19	133	17		

CHURCH SCHOOL REPORT—DALLAS DISTRICT (Concluded)

Amarillo Cir.														
Abilene				7										
Corsicana		24	1	6										
Denison		8		12	1	12								
Dallas: Mill City		5	3	4										
Mt. Zion														
St. Paul		50	50	150	1	22		1	10	98				
Trinity	6	18	20	12										
Warren-Wesley	3		6	36										
Ennis-Waxahachie				16										
El Paso				25										
Ft. Worth: Cowan				3										
Cogswell														
St. Andrews	5			50	1	40		1	4	75	10			
Trompson	1		2	11										
Lubbock Cir.				10	1	3	1	3						
Milford-Italy	3	5	6	25										
Mexia: Jones		21		14	1	12								
Mexia Cir.	2	5	6	16										
Pelham Cir.	5		1	41				1	1	3	86	6		
Sherman Cir.	1	1	1	13	1	30								
Wichita Falls Cir.	1			36										
Ferris-Lancaster				12										
	27	142	94	499	6	119	1	3	3	15	176	96	6	

CHURCH SCHOOL STATISTICS—SAN ANTONIO DISTRICT (Concluded)

Beeville-Petus	1	5	4	15										
Belmont Cir.				6										
Cuero		4		12										
Corpus Christi	1	19	2	11				1	8	137	25			
Eades-Lavernia				2										
Floresville-Runge		4		16										
Gonzales-Elm	3	4	2	20										
Gonzales Cir.				7										
Hondo-Uvalde		18												
Kerrville	2			12				1	5	20				
Kingsville Cir.				22	1	16								
Nixon Cir				6										
Pearsall														
Pleasantown Cir.				2										
S. A.: E. St. Paul	10			20	1	15		1	8	72	3	1		10
Jacobs	1	15	1	32				1	4	72				
Jones														
Lincoln		10		9	1	16	1	3	1	8	16			
St. Paul	4	30	10	288	2	27		1	8	130	46			
Sanford				10				1	5	77				
San Antonio Hghts														
S. San Antonio														
Seguin-Olmos				20										
Yorktown														
	22	91	19	510	5	74	1	3	7	46	524	74	1	10

CHURCH SCHOOL STATISTICS—VICTORIA DISTRICT (Concluded)

CHARGES NAME OF	FINANCES				Leadership Training			VACATION			WEEK DAY			
	Rally Day Off'g	Pd. by Chr. Sch. to W'd Ser. not inc. RDO	Pd. by Chr. Sch. to All oth. Benevolences	Exp. for Lesson Materials, Sup., etc.	No. Methodist Training Classes	Enrollment	No. Interdenominational Classes	Enrollment	No. of Vacation Schools	No. Teachers and Helpers	Pupils Enrolled	Total Expenses of Vacational Schools	Methodist Week Day Schools	Pd. Teachers & Helpers
Alleytown				2										
Altair Cir.				8										
Bloomington			2	5										
Columbus Cir.				25	1	14		1	1	18	20			
Cologne Cir.				8										
Edna Cir.		7	10	34										
Garwood Cir.				9										
Goliad Cir.	1	2	1	8				1	1	52	5			
Hallettsville Cir.			5	12										
Oakland Cir.			12	21										
Schulenburg	1	3		8										
Sublime Cir.				2										
Victoria	2	10	5	78										
Wharton Cir.	4	6	8											
Weimar Cir.	6	3												
Yoakum Cir.				13										
	14	31	83	233	1	14		2	8	70	25			

CHURCH SCHOOL STATISTICS—WACO DISTRICT (Concluded)

Aquilla-West				6										
Bowman-Reagan			4	12										
Bremond Cir.		2	13											
Calvert		5	2	15	1	19		1	5	60	5			
Cameron Cir.	4		1	1										
Chilton-Mooreville		20		12										
Groesbeck		21	6	22										
Marlin			84	55										
Mart-Springrill				24										
Milam Cir.				6										
Rocky-Cedar	5	7		18										
Springfield Cir.			1	5										
Satin Cir.	2	1	3	8										
Valley Mills Cir.				11										
Bracks-Majors														
Waco: Jones Chapel				15										
Mt. Zion	1	54	15	15										
St. James	1	66	15	35				1	6	90	5			
Moody-Gatesville				5										
Hubbard-Dawson		15		8	1	12	1	6						
Rosebud-Swann														
Vacational Classes	12	191	94	273	2	31	1	6	2	11	150	10		

EPWORTH LEAGUE STATISTICS—AUSTIN DISTRICT

NAMES OF CHARGES OR CHURCHES	Y'g People		Seniors		Inter'ates		Juniors		Pd W'd Ser.	
	Chapters	Members	Chapters	Members	Chapters	Members	Chapters	Members	Twenty-four Hour-Day Plan	Through All Other Channels
Austin Cir. -----	1	15	1	15	1	9	1	6		
Simpson -----	1	20	1	20			1	20		
Wesley -----	1	35	1	20			1	25	25	
Belton Cir. -----	2	40	2	40			2	35		2
Brownwood Cir. -----	1	15	1	8	1	8	1	5		
Cedar Creek Cir. -----										
Fayetteville Cir. -----	1	12	1	12			1	12		2
Georgetown Cir. -----	2	30	2	30	2	30	2	30	3	5
Giddings-Lea -----										
Hutto -----										
Kellsbranch -----	2	15								
Lampasas -----	1	14	1	8			1	6		
Littig -----										
Llano-Mason -----										
Luling Cir. -----	1	50	1	50	1	40	1	45		
Lockhart Cir. -----	1	22	1	8						
Lagrange Cir. -----	1	10	1	10						
San Angelo Cir. -----	1	10	1	10			1	12		
Smithville -----	1	40	1	10			1	6		
Temple Bartlett -----										
TOTAL	17	310	15	233	5	87	13	247	28	9

EPWORTH LEAGUE STATISTICS—DALLAS DISTRICT

Amarillo Cir. -----										
Abilene -----	1	8					1	4		
Corsicana -----	1	6	1	3	1	4	1	4		3
Denison -----	1	10	1	15			1	20		
Dallas: Mill City -----	1	8	1	6	1	5	1	6		5
Mt. Zion -----										
Saint Paul -----	1	18	1	18			1	20	10	20
Warren-Wesley -----	1	14	1	14			1	11		
Ennis-Waxahachie -----										
El Paso -----	1	12	1	12	1	8	1	5		
Fort Worth: Cowan -----	1	12	1	12						
Cogswell -----										
Saint Andrews -----	1	20	1	10			1	17		
Thompson -----	1	15			1	10				
Lubbock Cir. -----										
Milford-Italy -----	1	10	1	8	1	8	1	7		1
Mexia-Jones -----	1	8	1	8	1	12	1	14		4
Mexia Cir. -----	1	20	1	20						
Pelham Cir. -----	3	42	3	42	1	12	1	5		
Sherman Cir. -----	1	14	1	14			2	26		2
Wichita Falls Cir. -----	1	6	1	6			1	12		
Ferris-Lancaster -----										
Dallas: Trinity -----	1	16	1	9	1	7	1	7		
TOTAL	19	239	17	197	8	66	15	158	10	38

EPWORTH LEAGUE STATISTICS—SAN ANTONIO DISTRICT

Beville-Pettis -----	1	12					1	8		
Belmont Cir. -----										
Cuero -----	1	18					1	15		10
Cornus Christi -----					1	8				1
Eades-Lavernia -----										
Floresville-Runge -----	1	12	1	12						
Gonzales-Elm -----	2	10					1	40		
Gonzales Cir. -----										
Hondo-Uvalde -----	1	21	1	18						
Kerrville -----	1	12	1	12			1	10		
Kingsville Cir. -----	2	20	2	20			2	10		
Nixon Cir. -----										
Pearsall -----										
Pleasantown Cir. -----			1	5						17
San Antonio: East St. Paul -----	1	20	1	20	1	10	1	18		
Jacobs -----	1	18	1	11	1	11	1	10		
Jones -----	1	20	1	20						
Lincoln -----	1	10	1	10					9	3
Saint Paul -----	1	18	1	18	1	26	1	21		10
Sanford -----										
San Antonio Heights -----										
South San Antonio -----										
Seguin-Olmos -----										
Yorktown -----										
TOTAL	14	191	11	166	4	55	9	132	9	51

EPWORTH LEAGUE STATISTICS—VICTORIA DISTRICT

NAMES OF CHARGES OR CHURCHES	Y'g People		Seniors		Inter'ates		Juniors		Pd W'd Ser.	
	Chapters	Members	Chapters	Members	Chapters	Members	Chapters	Members	Twenty-four Hour-Day Plan	Through All Other Channels
Alleytown -----										
Altair Cir. -----										
Bloomington Cir. -----	1	20	1	20	1	8	1	12		
Columbus Cir. -----	1	14	1	10	1	15	1	12		
Cologne Cir. -----	1	36	1	19	1	14	1	12		
Edna Cir. -----	1	15	1	15	1	10	1	20		
Garwood Cir. -----										
Goliad Cir. -----	1	12	1	28	1	5	1	12		2
Hallettsville Cir. -----	2	16	2	16	1	16	1	19		
Oakland Cir. -----										
Schulenburg -----	1	20					1	12		5
Sublime Cir. -----										
Victoria -----	1	20	1	10	1	10	1	10		6
Wharton Cir. -----	2	15	2	20					2	2
Weimar Cir. -----										
Yoakum Cir. -----	1	15	1	15			1	10		
TOTAL.....	12	183	11	153	7	78	9	119	2	15

EPWORTH LEAGUE STATISTIC—WACO DISTRICT

Aquilla-West -----	3	10	1	27	1	10				
Bowman-Reagan -----	1	15	1	15			1	20		2
Bremond Cir. -----	1	6	1	6						
Calvert -----	1	18	1	18			1	10		
Cameron Cir. -----										
Chilton - Moreville -----	2	30	1	30			2	25		16
Groesbeck -----	1	14	1	12			1	12		3
Marlin -----	1	25	1	25	1	10	1	18	10	14
Mart-Springhill -----										
Milam Cir. -----	1	6					1	10		
Rocky-Cedar -----	1	10	1	10	1	26				3
Springfield Cir. -----	1	10	1	10						
Satin Cir. -----										
Valley Mills Cir. -----	1	15	1	15						
Bracks-Majors -----										
Waco: Jones Chapel -----	1	12	1	12						
Mount Zion -----	1	15	1	15			1	5		
Saint James -----	1	24	1	24			1	18		
Moody-Gatesville -----	1	6	1	6	1	7	1	10		2
Hubbard-Dawson -----	1	6	1	6	1	6	1	6		
Rosebud-Swann -----										
TOTAL	19	222	15	233	5	58	11	133	10	40

OUR HONORED DEAD

NAME AND DATE OF DEATH	PLACE OF BURIAL	Time entered Ministry	Years in Ministry
J. B. Furgerson, Jan. 6, 1874	Bell County	1854	20
J. S. Stricklin, Mar. 25, 1878	Girard, Kansas		1
E. S. Havens, Feb. 29, 1875		1870	3
Reubin Coleman, Dec. 3, 1875	Bastrop	1870	5
Isaac wright, April 3, 1875	Austin	1874	2
J. G. Webster, Mar. 14, 1877	Cottonwood Colony	1874	4
Ben Hoffman, Mar. 31, 1878	Eagle Lake	1874	4
John Wright, Jan. 17, 1880	Cottonwood Colony	1874	6
Archey Johnson, Feb. 6, 1880	Giddings	1874	6
Hiram Melton, Aug. 3, 1880	Limestone County	1874	6
Jacob Oakman, Oct. 1, 1882	Flatonia	1872	10
Jackson Johnson, Oct 1, 1882	Manor	1875	7
Jackson Caesor, Sept. 21, 1883	Wharton	1879	4
Larkin Carper, April 26, 1885	San Antonio	1870	15
Elijah Nesbitt, Sept. 26, 1885	Sprinkle	1875	10
Caesor King, Aug. 16, 1885	Georgetown	1874	11
J. W. Robinson, Sept. 1, 1888	Austin	1874	11
Washington Goodwin, May 3, 1890	Manor	1876	14
J. H. Brawley, April 20, 1893	Luling	1887	6
G. W. Brothers, Aug. 20, 1893	Cuero	1883	10
Toney Auyustis, June 10, 1894	Columbus	1879	15
J. H. Purnell, Oct. 10, 1894	Waco	1890	4
J. H. Williams, Oct. 3, 1895	Denison	1893	2
J. T. Gibbons, Aug. 3, 1896	San Antonio	1883	13
A. L. Armstrong, Sept. 10, 1896	Gatesville	1893	3
Daniel Harper, Sept. 1, 1896	Victoria	1874	22
Nathen Caswell, Dec. 20, 1896	Austin	1875	21
C. L. Maderson, Sept. 16 1900	Austin	1876	24
B. F. Smith, May 20, 1902		1877	25
L. H. Harvey, July 4, 1902	Cuero	1896	6
A. S. Betheny, June 30, 1902	Fort Worth	1893	9
Chas. Hart, Aug. 10, 1902	Winchester	1877	25
Daniel Humphrey, July 4, 1903	Marlin	1887	26
John Neal, March 22, 1908	Davilla	1894	9
Samuel Gates, Feb. 25, 1905	Austin	1874	31
Anderson Brack, Sept. 10, 1905	Waco	1874	31
Mack Henson, June 17, 1905	Austin	1874	31
Andrew Foster, Nov. 26, 1906	Victoria*	1880	36
James Jorman, Dec. 9, 1908	Seguin	1877	29
B. L. Adams, March 19, 1908	Littig	1893	15
Gabrial Wilson, July 16, 1908	Calvert	1875	33
Thomas Watkins, April 10, 1908	Marlin	1886	32
Willis Graves, May 10, 1908	Waco	1876	32
G. A. Shanklin, Dec. 19, 1900	Hubbard City	1881	19
J. T. Jacobs, March 11, 1911	San Antonio	1882	29
W. H. Davis, Sept. 12, 1910	Seguin	1882	29
Jefferson Buel, June 10, 1910	Waco	1877	29
C. P. Westbrooks, Dec. 30, 1911	Hubbard	1885	26
A. J. Lynch, March 18, 1911	Victoria	1893	18
J. W. Mitchell, Dec. 7, 1911	Bremond	1878	33
R. H. Ponton, Sept. 19, 1912	Belton	1882	25
M. C. Caviness, June 28, 1912	Lockhart	1887	25
J. H. Holden, May 1, 1912	Hondo	1887	25
Lee Reed, May 14, 1913	San Antonio	1881	25
E. E. Henderson, Sept. 9, 1913	Luling	1881	32
Alfred Dickerson, June 9, 1913	Sprinkle	1897	26
F. L. Kirkpatrick, Dec. 7, 1915	Austin	1897	18
Granville Norman,	Los Angeles		7
Joseph Hariford, 1917	Victoria	1894	23

METHODIST EPISCOPAL CHURCH

NAME AND DATE OF DEATH	PLACE OF BURIAL	Time entered Ministry	Years in Ministry
J. S. Wyatt, Dec. 31, 1916	Winchester	1887	30
Christopher Young	Victoria	1875	43
G. W. Townsend, 1916	Victoria	1883	33
W. E. Blackson, February, 1916	Austin	1899	18
W. H. Mosby, 1916			
John Bickham, February, 1916	Gonzales	1891	
R. S. Lovinggood, January, 1916	Austin	1900	16
L. K. Parker, 1916	Smithville	1901	
A. T. Jackson, 1918	Dallas	1887	34
Ephriam Jones, April, 1918	Seguin		21
P. B. Bennett, 1918	Waco	1887	31
Riley Soda, 1918	Beeville, Texas		
C. C. Scruggs, 1919			
R. D. Dennis, 1919	Calvert		
A. Lockhart, 1921	Waco		
E. L. Jackson, 1921	Temple		
C. H. Franklin, 1921	San Antonio		
J. W. Wormley, 1921	Winchester		
G. W. Nevils, 1922	La Grange		
Primus Gates, 1922	La Grange		
A. L. Carper, 1924	San Antonio		
S. D. Humphrey, 1922	Marlin		
D. C. Hailey, 1924	Waxahachie		
B. J. Goff, 1925	Waco		
D. C. Lacy, Dec. 25, 1925	Mexia		
Harry Swann, 1925	Victoria		
W. H. Stevens, 1925	Winchester		
W. H. Purnell, 1925	Waco		
Moses Smith, 1925	Austin		
Moten Lott, 1925	Austin		
W. M. Mooney, 1925	Cuero		
J. C. Mayes, 1925	Temple		
Albert Johnson, 1926	Luling		
C. N. Strait, 1927	Georgetown		
J. C. Eusan, 1927	San Antonio		
J. H. Swann, June 11, 1828	Yoakum		
N. H. Townsend, August, 1928		1893	
H. H. Qualls, June 10, 1928	Ennis		
S. W. Harvey, Aug. 10, 1928	Waco	1881	
J. W. Wright, 1929		1881	
J. L. S. Edmondson, Oct. 13, 1929	San Antonio		
M. S. Jordan	Cuero		
Benjamin F. Wright, Oct. 15, 1930	Fayetteville		
J. H. Hutchinson	Austin		
Alfred Brown, 1931	Shiner		
Williams Reed, 1931	Waco		
C. B. Melton, 1931	Kerrville		
George Pleasant, 1931			
J. W. Weakley, 1932	Luling		
G. M. Moten, 1932	Waco		
C. Schuler, 1932	Luling		
S. E. Jones, 1933	Cuero		
D. L. Mosby, 1933	Victoria		
J. H. Napier, 1933	San Antonio		
John Coe, 1933	Marlin		
J. E. Brown, 1934	Lampasas	1909	25
E. E. Cooper, 1934	Oakland	1888	
Enoch Cogswell, 1934	Mart	1887	
T. W. Roberts, 1935	Milford	1908	27
J. W. Stone Jr., 1935	Hubbard	1916	19
C. S. Williams, 1935	Marshall	1903	33

Part V

CHRONOLOGICAL ROLL WEST TEXAS CONFERENCE

This roll carries the years of service of the men of the Conference.

Names	Relation	How Received	Year
Alexander, G. F.	Elder	On Trial	1920
Allen, E. T.	R	Credentials	1926
Allen, R. W.	Elder	On Trial	1922
Appling, R. A.	Elder	On Trial	1909
Bailey, R. R.	Elder	Transfer	1931
Baker, D. B.	Elder	On Trial	1921
Baker, W. W.	Elder	On Trial	1923
Blair, Frank	Elder	On Trial	1925
Browne, J. G.	Elder	On Trial	1906
Brown, J. H.	Elder	On Trial	1926
Bruton, T. M.	Elder	Credentials	1924
Bryant, T. H.	Elder	On Trial	1924
Burkley, M. B.	Elder	On Trial	1924
Byars, B. A.	Elder	On Trial	1920
Carrington, Charles	Elder	On Trial	1932
Carroll, D. C.	Elder	On Trial	1932
Carper, J. T.	Elder	On Trial	1907
Carruthers, J. H.	Elder	On Trial	1929
Cavett, G. V.	Elder	On Trial	1910
Childs, J. H.	Elder	On Trial	1913
Coe, James	Elder	On Trial	1914
Coe, Obie	Elder	On Trial	1924
Cook, V. A.	Elder	Transfer	1925
Deslandes, G. A.	Elder	Transfer	1917
Downs, J. W.	R	On Trial	1912
Downs, Karl	D	On Trial	1933
Dudley, J. H. R.	E	On Trial	1917
Duncan, R. H.	R	On Trial	1896
Echols, T. B.	E	On Trial	1924
Eggleston, J. B.	E	On Trial	1920
Ellison, M. C.	E	On Trial	1922
Ellison, W. M., Jr.	E	On Trial	1929
Ellison, W. M.	E	On Trial	1912
Fountain, Mumford	R	Transfer	1922
Foy, Thomas	E	On Trial	1915
Franklin, C. W.	E	On Trial	1912
Graham, S. G.	E	On Trial	1918
Grannum, S. E.	E	Transfer	1933
Greene, C. R.	E	On Trial	1929
Greer, I. C.	D	On Trial	1934
Hamilton, C. H.	E	On Trial	1916

Names	Relation	How Received	Year
Hardeom, J. J.	E	On Trial	1911
Harrison, Henry	E	Credentials	1927
Harvey, S. N.	E	On Trial	1905
Haynes, L. L.	E	On Trial	1922
Henderson, E. C.	E	On Trial	1905
Holden, A. C.	E	On Trial	1929
Holden, A. D.	E	On Trial	1926
Holmes, Zan W.	E	On Trial	1927
Hudspeth, Francis	E	Credentials	1929
Hooey, J. N.	E	On Trial	1914
Hutchinson, F. J.	E	On Trial	1916
Hutchinson, J. W. V.	E	On Trial	1916
Jacques, A. D.	E	Transfer	1907
Jones, H. A.	E	On Trial	1904
Jordan, Joel S.	E	On Trial	1929
Keesee, S. A.	E	On Trial	1929
Kelley, G. W.	E	On Trial	1930
King, Zebra	E	On Trial	1929
Kuykendal, H.	E	On Trial	1922
Lee, B. F.	E	On Trial	1922
Lot,t, W. B.	E	On Trial	1900
Loud, I. B.	D	On Trial	1933
Majors, Marshall,	E	On Trial	-925
Mallory, G. M.	R	On Trial	1910
Marshall, J. H.	E	On Trial	1924
Mason, A. M.	E	On Trial	1893
Maye, J. W.	E	Credentials	1920
McCutchon, H. O.	E	On Trial	1919
McKinney, H. L.	E	Restored	1926
McMillan, K. W.	E	On Trial	1900
Medlock, J. S.	R	On Trial	1900
Miles, L. W.	D	On Trial	1932
Moore, T. S.	R	On Trial	1904
Moore, J. Walt	E	Transfer	1932
Moore, N. J.	E	On Trial	1900
Mosely, W. M.	E	On Trial	1927
Mosely, S. D.	E	On Trial	1912
Muse, J. F.	E	On Trial	1911
Muse, L. E.	E	On Trial	1922
Palmer, R. L.	E	On Trial	1925
Phillips, P. H.	E	On Trial	1921
Pierce, I. H.	E	On Trial	1925
Phoenix, J. B.	E	On Trial	1924

Names	Relation	How Received	Year
Richardson, L. H.	R	On Trial	1893
Robinson, W. A.	E	On Trial	1932
Russell, A. G.	E	On Trial	1922
Sanford, I. T.	R	On Trial	1911
Smith, Esau	E	On Trial	1921
Sims, T. J. D.	E	On Trial	1921
Spencer, Earl L.	E	Credentials	1936
Stephens, M. W.	E	On Trial	1911
Stephens, N. W.	E	On Trial	1926
Stone, J. W.	R	On Trial	1897
Strait, J. H.	E	On Trial	1921
Stait, L. L.	E	On Trial	1922
Tollerson, Henry	E	Restored	1929
Tucker, Dee T.	E	On Trial	1927
Vance, D. F.	E	On Trial	1905
Warren, Charles	D	On Trial	1933
Warren, J. W.	E	On Trial	1904
Waters, George	E	On Trial	1898
Wattley, J. L.	E	On Trial	1920
White, W. M.	R	On Trial	1919
Whitiker, C. E.	E	On Trial	1923
Willis, H. C.	E	On Trial	1927
Wills, J. A.	E	On Trial	1925
Wyatt, M. L.	E	On Trial	1911
Wyatt, T. H.	E	Credentials	1892
Young, (Fred D.	E	On Trial	1923

PROBATIONERS

Jones, James L.	D	On Trial	1935
Foy, J. D.	D	On Trial	1935
King, E. N.	D	On Trial	1935
Bircho, Bateman	D	On Trial	1936
Cuerington, A. M.	D	On Trial	1936
Jackson, J. H.	L. P.	On Trial	1936
Stewart, B. F.	E	On Trial	1936
Tatum, Elmo	L. P.	On Trial	1936

SUPPLY PASTORS

Caesar, Jack	D	Supply	1933
Stephens, T. W.	D	Supply	1933
Weaver, Richard	D	Supply	1934
North, J. N.	D	Supply	1936
Morgan, J. W.	D	Supply	1936

ROLL OF LAY ASSOCIATION—1936-40

Charley Bracy, S. L. Brown, Leola Calvin, Elizabeth Coe, E. M. Cooper, Walter Cotton, Mellie Cox, A. W. Crane, Ola Dardin, Fintress Dorn, Anna Douglas, Sarah Douglas, J. C. Duke, A. B. Epperson, Ada Fifer, Dora Floyd, H. Galloway, E. L. Grant, R. G. Grant, Fannie Green, W. M. Green, William Green, O. E. Hard, Ethel Hamilton, W. H. Hamilton, C. B. Hibler, E. L. Isaacs, Clara Jarmon, Mrs. King, S. E. Kennard, Velma Landon, Mary Landrum, A. E. Marshall, Rosa McGee, A. C. McQuarter, W. M. Mooney, Mrs. F. Morris, Mod-ester Murphy, Mrs. L. E. Muse, R. L. North, Sarah Pierce, Jessie Reagn, Delilah Roders, Laura Russell, Gladis Sadler, N. C. Scott, Mrs. T. J. D. Sims, T. W. Stephens, Mrs. C. S. Strait, Mrs. J. H. Strait, C. E. Taylor, D. Thomas, L. G. Todd, M. A. Wagner, R. E. Waters, Mrs. C. S. Williams, Frank Williams, James Williams, A. C. Wilson.

HISTORICAL

Bishop A. Preston Shaw held his first annual conference at Wesley Church, Austin, Texas, October 14-18, 1936.

A very unique program prepared by Pastor C. E. Whitiker. On the opening day a gavel was presented the Bishop by C. E. Whitiker made of timbers of the Old Wesley Church which was founded in 1865, in which church the West Texas Conference was organized, in 1874, with seventeen ministers.

Sam Huston College an "A" rated College figured largely in the entertainment of this conference with S. E. Grannum as president. This school has more than 300 young folk in attendance, with great hope of increasing the attendance as the years come.

SERMONS DELIVERED BY THE FOLLOWING MINISTERS

L. L. Haynes, pastor St. Paul, Dallas; W. H. Hightower, Ebenezer Church, Marshall, Texas; Bishop Shaw, Resident Bishop of the New Orleans, New Orleans, Louisiana; A. D. Holden, pastor at Mart; J. B. F. Shaw, Los Angeles, California.

Music was rendered by Wesley choir and the St. James choir of Waco, Texas and Mrs. M. K. Davis, etc., and the Baptist choir of Austin, and Sam Huston College.

A banquet was tendered Bishop and Mrs. A. P. Shaw on Saturday night. Many friends and members of the conference were guest at this banquet. Music for this occasion was rendered by Prof. B. L. Joyce, director Anderson High School band.

