

R. S. Massey.
412 N. Upper St.,
Lexington Ky.

JOURNAL

West Texas Conference

Methodist Episcopal Church

—HELD IN—

SAN ANTONIO, TEXAS

November 30, 1927



BISHOP ROBERT E. JONES, D.D., LL.D., Presiding
REV. CHARLES W. FRANKLIN, Secretary



OFFICIAL JOURNAL 1927

SAMUEL HUSTON COLLEGE

Austin, Texas

Founded by Reuben S. Lovinggood

Recognized as an "A" Class four year College by the State Department of Education.

Six years work: (a) Last two years of High School; (b) Four years of College leading to the Bachelor of Arts degree with Permanent First-Grade Teacher's Certificate.

Courses in Music, Home Economics and Commercial subjects.

In the beautiful cultural and friendly capital city of the State.

Modern student activities, high scholarship and Christian character emphasized.

Expenses surprisingly reasonable.

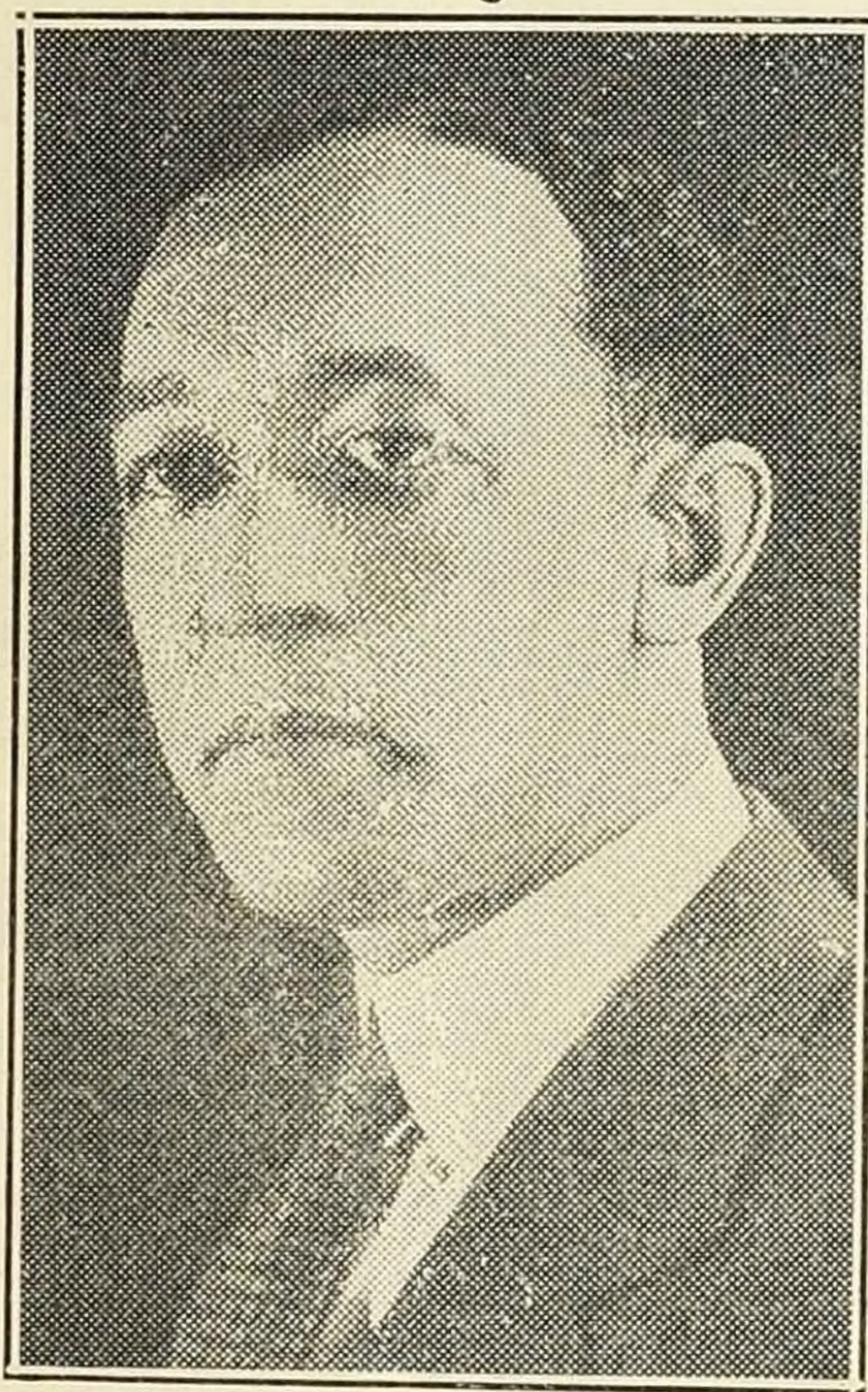
Summer Session begins June 11.

Autumn quarter 1928 begins September 17.

For further information address:

T. R. DAVIS, President,

Or the Registrar



PROF. T. R. DAVIS, A. M., Ph. D.,
President Sam Huston College,
Austin, Texas

Conference Officers

Conference Officers.

Bishop Robert E. Jones, D. D., LL. D., President.....New Orleans, La.
Chas W. Franklin, Secretary.....1323 Paso Hondo St., San Antonio, Texas
J. W. Weakley, Treasurer.....Box 67, San Antonio, Texas
C. E. Whitiker, Statistician,.....Station A, Box 253, San Antonio, Texas
R. N. Brooks, President Board of Examiners.....
.....Gammon Theological Seminary, New Orleans, La.
K. W. McMillan, Registrar Board of Examiners.....
.....1814 Burford, Street Dallas, Texas
T. B. Echols, Reporter.....Samuel Huston College, Austin, Texas

EDITORS AND PUBLISHERS

C. W. Franklin, Secretary; K. W. McMillan, Chairman of Board; W. M. Ellison, J. H. Childs.

ASSISTANT SECRETARIES

J. H. R. Dudley.....W. W. Baker

ASSISTANT TREASURERS

J. D. Rice, W. B. Lott, D. F. Vance, S. N. Harvey, F. J. Hutchinson,
J. W. Warren, S. D. Mosely.

ASSISTANT STATISTICIANS

T. M. Bruton, R. W. Allen, J. B. Phoenix, D. B. Baker, J. F. Muse, J. N. Hooley, B. A. Byars, H. A. Jones, F. D. Young.

OFFICERS CONFERENCE AUXILIARIES

President Lay Association.....Prof. P. A. Hill, Austin, Texas
President Conference Epworth League.....R. A. Atkinson, Seguin, Texas
President Conference Church Schools.....Rev. T. B. Echols, Austin, Texas
President Men's Council.....Prof. T. R. Davis, Austin, Texas
President W. H. M. Society.....Mrs. A. L. Carper, 224 Chestnut
Street, San Antonio, Texas.
President W. F. M. Society.....Mrs. J. H. Swann, Yoakum, Texas
Corresponding Secretary W. H. M. Society.....
.....Mrs. S. E. Jones, Box 92, North Fort Worth, Texas...
Corresponding Secretary W. F. M. Society.....
.....Mrs. K. W. McMillan, 1814 Burford Street, Dallas, Texas
President Older Boys' Conference—Rev. J. D. Rice, 3710 State St., Dallas, Texas

Chairman, Gammon Theological Seminary, Atlanta, Ga.; K. W. McMillan, Registrar, 1814 Burford Street, Dallas, Texas.

ADMISSION ON TRIAL AND ORDINATION:—C. S. Williams, C. E. Whitiker, W. L. Turner.

First Year's Study:—M. B. Burkley, A. D. Holden, J. B. Phoenix.

Second Year's Study:—R. N. Brooks, K. W. McMillan, T. B. Echols.

Third Year's Study:—W. W. Baker, S. N. Harvey, J. L. S. Edmondson.

Fourth Year's Study:—A. D. Jacques, R. M. Davis, Robert S. Mosby.

BOARD OF HOME MISSIONS AND CHURCH EXTENSION:—S. E. Blacknell, Chairman; T. B. Echols, Secretary; T. R. Davis, Treasurer; K. W. McMillan, J. H. Childs, H. H. Qualls, C. W. Franklin, J. W. Downs, C. E. Whitiker, D. R. Woodard, J. W. Frazier, J. W. Madison, W. M. Tears, W. L. Turner, W. M. Ellison.

STANDING COMMITTEES FOR CONFERENCE SESSION 1938

AMERICAN BIBLE SOCIETY:—A. D. Holden, J. E. Brown, I. T. Sanford, N. J. Moore, M. C. Ellison, J. H. Brown, Charley Conner, G. F. Alexander.

AUDITING ACCOUNTS:—J. H. R. Dudley, R. N. Brooks, J. W. Warren, W. L. Turner, T. B. Echols.

BONDING CONFERENCE OFFICERS:—R. M. Davis, M. L. Wyatt, J. H. Swann, J. W. V. Hutchinson, J. H. Childs, W. L. Turner.

CHURCH SCHOOLS:—T. B. Echols, V. A. Cook, D. F. Vance, B. J. Easter, T. J. D. Sims, L. L. Strait.

CONFERENCE RELATIONS:—C. S. Williams, K. W. McMillan, M. W. Stephens, W. M. White, J. L. S. Edmondson, M. L. Wyatt, F. J. Hutchinson, W. B. Lott, J. J. Harde-mon.

EDUCATION:—R. S. Mosby, T. R. Davis, A. D. Jacques, F. M. Hudspeth, T. M. Burton, J. S. Medlock, I. H. Pierce.

EPISCOPAL FUND:—W. L. Turner, George Waters, John Coe, James Coe, Obie Coe, M. Majors.

EPWORTH LEAGUE:—J. W. Stone, Jr., P. H. Phillips, F. D. Young, Clen-ton Schuler, J. H. Marshall, G. M. Mallory.

HOSPITALS AND HOMES:—S. N. Harvey, Henry Harrison, J. J. Harde-mon, S. H. Gates, J. D. Asberry, J. H. Strait.

LADIES AID SOCIETY:—C. T. Wardah, A. M. Mason, J. B. Phoenix, Frank Blair, J. H. Strait, G. F. Alexander, Dee Tucker.

MEMOIRS:—K. W. McMillan, J. W. Warren, C. W. Franklin, J. H. Napier, N. W. Stephens, J. D. Mackey, J. W. Weakley.

PROGRAM AND PUBLIC WORSHIP:—J. H. Childs, K. W. McMillan, J. H. Strait, J. D. Rice, C. T. Wardah, Timothy Johnson, Susie Powell, Dr. S. L. Brown.

PROHIBITION—PUBLIC MORALS:—J. L. S. Edmondson, George Wa-ters, J. E. Brown, T. H. Foy, J. W. Stone, H. J. Jackson.

PENSION AND RELIEF:—W. B. Lott, D. B. Baker, W. W. Baker, H. A. Jones, A. D. Holden .

REFERENCE:—C. S. Williams, C. E. Whitiker, M. W. Stephens, J. H. Swann, J. W. Warren, M. L. Wyatt, J. W. V. Hutchinson.

RESOLUTIONS:—P. H. Jenkins, H. L. McKinney, R. N. Brooks, S. D. Mosely, S. E. Jones.

SABBATH OBSERVANCE:—H. O. McCutchin, M. C. Ellison, W. W. Baker, R. W. Allen, E. C. Henderson, J. H. Brown, Z. E. King, M. A. Freeman.

STATE OF THE CHURCH:—R. N. Brooks, A. D. Jacques, A. G. Russell, M. C. Ellison, A. Brown.

W. H. M. SOCIETY:—P. H. Jenkins, E. T. Allen, U. V. Green, D. L. Mosby, T. H. Bryant, J. T. Carper, Zan Holmes, Wm. Mosby, J. S. Jordan.

W. F. M. SOCIETY:—J. N. Hooey, R. A. Appling, G. V. Cavett, I. H. Pierce, T. J. D. Sims, P. H. Moore, J. A. Wills, H. C. Willis, G. M. Moten, O. B. Coe.

PERIODICALS:—F. D. Young, G. F. Alexander, B. A. Byars, J. B. Eggleston, Sam Graham, C. H. Hamilton, H. E. Kuykendall, R. L. Palmer, J. D. Rice, Esau Smith, Frank Blair, Rell Palmer.

CONFERENCE SERMON:—Dr. R. M. Davis; alternate—Rev. M. L. Wyatt.

MISSIONARY SERMON:—Dr. W. L. Turner; alternate—Rev. W. B. Lott.

Daily Proceedings

Daily Proceedings.

DAILY PROCEEDINGS

San Antonio, Texas, November 30, 1927, at 9 o'clock.

The West Texas Annual Conference Methodist Episcopal Church, began its fifty-third annual session in St. Paul Church, Wednesday, November 30, 1927, with Bishop Robert E. Jones, of New Orleans, La., presiding.

OPENING—Bishop Jones conducted the devotional exercises and administered the sacrament of the Lord's Supper assisted by the District Superintendents.

ROLL CALL—C. W. Franklin, secretary of the last conference, upon request of Bishop Jones called the roll of the conference and one hundred members and sixteen probationers answered to their names.

ORGANIZATION—On motion of J. W. Warren, C. W. Franklin was re-elected secretary and named his assistants as follows: W. W. Baker and J. H. R. Dudley. These were confirmed by vote of the conference.

J. W. Weakley named his assistants as follows: J. D. Rice, J. W. Warren, S. D. Mosely, W. B. Lott, D. F. Vance, S. N. Harvey, F. J. Hutchinson, and by vote of the conference were confirmed.

C. E. Whitiker, statistician, named his assistants as follows: T. M. Bruton, R. W. Allen, J. B. Phoenix, D. B. Baker, J. F. Muse, J. N. Hooey, B. A. Byars, H. A. Jones, F. D. Young, and upon vote of the conference were confirmed.

On motion of K. W. McMillan, T. B. Echols was elected reporter to the church and daily papers.

BAR OF CONFERENCE—On motion of H. H. Gualls, the bar of the conference was fixed within the first six rows of seats directly in front of the pulpit.

TIME OF MEETING—On motion of K. W. McMillan, the conference voted to open at nine a. m., and to adjourn at one p. m. for dinner, and to convene at 2:45 p. m. and adjourn at will.

STANDING COMMITTEES—On motion of K. W. McMillan, the standing committees as printed in the journal were approved with the following substitutions: Instead of J. C. Eusan, the name of M. W. Stephens was inserted and for C. N. Strait, the name of M. Majors was inserted.

QUESTION FIFTEEN—The Bishop called question fifteen and the character of the following Elders was passed:—

Austin District—J. L. S. Edmondson

Corpus Christi District—J. J. Hardemon

Dallas District—J. H. Childs

San Angelo District—S. E. Blacknell

San Antonio District—K. W. McMillan

Waco District—J. W. Downs.

Victoria District—W. M. Ellison.

The above named men reported the work of their respective districts.

The Bishop called the names of the effective elders of the conference and their character was passed as follows:

Austin District—A. D. Jacques, T. H. Wyatt, J. S. Medlock, P. H. Phillips, J. W. Stone Sr., L. L. Haynes.

Corpus Christi District—L. W. Roberts, W. M. White, R. W. Allen.

Dallas District—P. H. Jenkins, G. A. Deslandes, J. D. Rice, J. L. Wattley, J. H. R. Dudley, R. M. Davis, S. E. Jones, J. B. Phoenix, S. N. Harvey, H. H. Qualls, L. E. Muse, J. B. Eggleston, J. W. Stone Jr., J. W. V. Hutchinson, R. A. Appling, W. W. White.

San Angelo District—G. V. Cavett, W. W. Baker, J. E. Brown, F. J. Hutchinson, T. H. Foy, C. H. Hamilton, M. L. Wyatt, D. B. Baker.

San Antonio District—J. D. Mackey, R. S. Mosby, H. O. McCutchin, N. J. Moore, B. J. Easter, A. G. Russell, J. H. Napier, J. F. Muse, C. W. Frankllin, J. W. Weakley, C. E. Whitiker, M. W. Stephens, J. W. Warren, E. C. Henderson, H. L. McKinney, C. T. Wardah.

Victoria District—George Waters, D. F. Vance, J. T. Carper, G. M. Mallory, J. N. Hooley, A. M. Mason, S. D. Mosley, J. H. Swann.

Waco District—John Coe, G. F. Alexander, A. D. Holden, J. G. Browne, H. A. Jones, I. T. Sanford, Sam Graham, B. A. Byars, C. S. Williams, W. B. Lott, M. B. Burkley.

INTRODUCTION—The bishop introduced the following visitors:—Dr. J. T. Curry, of the M. E. Church, South; Dr. M. J. Holmes, of the Board of Education of the Methodist Episcopal Church; Dr. I. Garland Penn, of the Board of Education; Dr. E. M. Jones, Field Representative of the Board of Pension and Relief; Prof. R. H. McAllister, Business Manager of the Southwestern Christian Advocate; Dr. R. G. Morris, of the Board of Home Missions and Church Extension; Prof. T. R. Davis, President of Samuel Huston College, and J. W. Warren, Pastor of St. Paul M. E. Church.

ADJOURNMENT—The announcements were made; the doxology was sung, after which we adjourned with the benediction given by Dr. M. J. Holmes.

BISHOP R. E. JONES, President

C. W. FRANKLIN, Secretary

AFTERNOON—First Day

Conference was called to order at 2:45, with Bishop Jones in the chair. J. H. R. Dudley conducted the devotions.

On motion of J. W. Warren, a donation of \$29.00 was given to Bishop Jones to assist in the work at Gulf Side.

REPORTS—The following effective elders made reports of their work:—A. D. Jacques, J. S. Medlock, P. H. Phillips, J. W. Stone, L. L. Haynes, L. W. Roberts, W. M. White, R. W. Allen, P. H. Jenkins, G. A. Deslandes, J. D. Rice,

J. L. Wattley, J. H. R. Dudley, R. M. Davis, S. E. Jones, J. B. Phoenix, S. N. Harvey, H. H. Qualls, L. E. Muse, J. B. Eggleston, G. V. Cavett, W. W. Baker, J. E. Browne, F. J. Hutchinson, Thomas Foy, C. H. Hamilton, M. L. Wyatt, D. B. Baker, J. D. Mackey, R. S. Mosby, H. O. McCutchins, N. J. Moore, B. J. Easter, A. G. Russell, J. F. Muse, C. W. Franklin, M. W. Stephens, J. W. Warren, E. C. Henderson, J. W. Weakley, George Waters, D. F. Vance, C. T. Wardah, J. T. Carper, G. M. Mallory, J. N. Hooey, A. M. Mason, S. D. Mosely, J. H. Swann, John Coe, G. F. Alexander, A. D. Holden, W. B. Lott, J. G. Browne, H. A. Jones, I. S. Sandford, Sam Graham, C. S. Williams, M. B. Burkley, B. A. Byars.

BOOK CONCERN—On motion of K. W. McMillan, T. B. Echols was appointed collector for the Book Concern. The bishop turned over to him the accounts as sent by the Book Concern.

OFFERING—An offering of \$11.25 was collected for R. A. Appling, who has been sick for the better part of the year. He in turn gave words of appreciation for the same.

ORDER OF THE DAY—On motion of H. H. Qualls, Friday at 3 p. m. was fixed to consider the interest of Samuel Huston College.

ADJOURNMENT—On motion we adjourned with benediction by Bishop Jones.

BISHOP R. E. JONES, President
C. W. FRANKLIN, Secretary

SECOND DAY—Morning Session

Bishop Jones called the conference to order at 9 o'clock.

JOURNAL—The journal of the first day was read and approved. Delinquent reports were called for and the men reported.

SUPPLY PASTORS—The Bishop called for reports from supply pastors. The following men reported:—Zan Holmes, G. W. Kelley, Dave Johnson, Z. E. King, S. J. Johnson, Elmo Watson, W. M. Mosely, A. C. Holden, S. Keesee, E. G. Gray and E. Davis.

QUESTION FIFTEEN—Question Fifteen was resumed and on motion of the district superintendent, the character of R. N. Brooks and T. B. Echols was passed.

Bishop Jones asked R. N. Brooks to preside at this time and R. G. Morris was introduced and spoke of the work of the Board of Home Missions and Church Extension.

At this point Bishop Jones resumed the chair and on motion of A. M. Mason a committee on Rural Work was raised. (See Committees.)

The roll was called for payment of subscriptions to the Gammon Lectureship fund and a number of men paid their subscriptions and a number of pledges were taken.

INTRODUCTIONS—Dr. J. A. Dierkman, President of Bethsaida Hospital,

of Cincinnati, Ohio, spoke in an interesting way of the work of the Board of Hospitals and Homes.

F. Rivers Barnwell, representing the Texas Health Department, was introduced and addressed the conference in the interest of his work.

QUESTION SIX—Question six was called and the following men were continued on Trial studies of the first year: J. H. Brown, N. W. Stephens, J. A. Thomas, and Henry C. Willis.

On motion of K. W. McMillan, Registrar of the Board of Examiners, the following men were advanced to the studies of the second year: Charles E. Connor, F. M. Hudspeth, Allen M. Harris, G. M. Moten, U. V. Green.

The character of E. T. Allen, O. B. Coe, I. H. Pierce, D. L. Mosby was passed, they made their reports and were continued in studies of the Third Year.

The character of Thomas Bruton, J. H. Strait, F. D. Young was passed and they made their reports and advanced to the studies of the Fourth Year.

On motion the character of M. C. Ellison, P. H. Moore, was passed. They made their reports and were continued in studies of the Fourth Year.

On motion the character of H. J. Jackson, L. L. Strait, Everage McRae, Henry Tollerson, was passed, they made their reports and graduated from the course of study and elected to Elder's Orders.

On motion the character of Esau Smith and T. J. D. Sims was passed and they made their reports and granted an Extension of time to complete the conference course of study and they were continued in the study of the Fourth Year.

On motion of R. N. Brooks, the district apportionments were made for the Summer School of the Theology at Waveland, Miss., as follows:—

Austin District, \$15.00
Corpus Christi District, \$5.00
Dallas District \$25.00
San Angelo District, \$15.00
San Antonio District, \$25.00
Waco District, \$20.00
Victoria District, \$15.00

INTRODUCTIONS—Bishop Jones introduced the following men to the conference: Dr. G. F. C. Curry, Rev. W. G. Merriweather, Dr. W. O. Boyd, Dr. J. S. Scott, and they were invited to sit with interest as we deliberated.

DIVIDENDS—Dr. E. M. Jones presented two drafts from the Board of Pensions and Relief. One for \$776.59 and another for \$94.49. This was ordered turned over to the Board of Stewards.

A collection was taken for Mrs. E. Spriggs Ratliff of \$35.00 and a committee was ordered to bear greeting with Bishop Jones heading the committee and to carry the money.

DEVOTIONAL PERIOD—Bishop Jones took charge of the devotional hour at this time and gave a most encouraging message from the subject: "The heart break of God." Announcements were made, doxology was sung and we adjourned.

BISHOP R. E. JONES, President
C. W. FRANKLIN, Secretary

here

THIRD DAY—Morning Session

Bishop Jones opened the conference at 9 o'clock with Rev. H. H. Qualls in charge of the devotions.

The journal of the previous day was read and approved.

QUESTION EIGHT—On motion of K. W. McMillan, the Registrar, the following men were admitted into full membership being ordained previously: Frank Blair, T. H. Bryant, Henry Kuykendall, J. H. Marshall, Marshall Majors, Clenton Schuler, R. L. Palmer, J. A. Wills.

The case of T. M. Bruton was adjusted and upon the recommendation of the Registrar, he was advanced to the studies of the Fourth Year.

The Bishop received the class after having answered the regular disciplinary questions and satisfied the conference as to all the requirements. Frank Blair, T. H. Bryant, Henry Kuykendall, J. H. Marshall, Marshall Majors, Clenton Schuler, R. L. Palmmer, and J. A. Willis were received.

QUESTION FOUR—Henry Harrison, on motion of the committee on Conference Relations, was received on Credentials from the African Methodist Episcopal Church, and placed in the studies of the Third Year.

ORDER OF THE DAY—On motion of K. W. McMillan, the conference proceeded to ballot for delegates to the General Conference.

On motion of C. S. Williams, the Tellers were appointed by the Bishop and ordered that correct initials of each man appear on the ballot.

The following Board of Tellers was appointed: A. D. Jacques, R. M. Davis, J. D. Rice, J. H. R. Dudley, L. L. Haynes, George Waters, and S. N. Harvey,

The ballot was taken and the tellers retired to count the vote.

INTRODUCTIONS—Dr. M. C. Wilcox was introduced and gave a brief experience as a missionary to China.

Doctor Campbell of the Central Pennsylvania conference was introduced and gave a brief word. Miss C. I. King, representing the work of Eliza Dee Home, was presented and told of the work among us for the past 34 years.

Dr. Paul B. Kern, with Mrs. Kern, of Travis Park M. E. Church South, with Mrs. Stella Allen, Mrs. L. G. Allen, were presented and Doctor Kern gave words of greeting from our sister church.

Dr. I. Garland Penn was presented and spoke for the Board of Education and the World Service Commission.

On motion of G. A. Deslandes, the conference voted to increase the World Service giving by ten percent over the previous year for the World Service Commission. Three thousand dollars was to be raised by February 12, for Sam Huston College.

BALLOT—The Tellers returned and the Bishop announced the results of the election as follows:

The total number of votes cast 111, defective three, total counted 108. Necessary for choice, 55.

K. W. McMillan, 79; R. N. Brooks, 74; J. W. Weakley, 35; J. W. Warren, 23; T. H. Wyatt, 22; G. A. Deslandes, 19; R. S. Mosby, 17; A. M. Mason, 15;

S. E. Jones, 4; J. H. Swann, 2; J. H. Childs, 1. K. W. McMillan and R. N. Brooks, having received the required number were declared elected.

The second ballot was ordered and was taken and the tellers retired to count the vote.

SEAT OF THE CONFERENCE—On motion of J. H. Childs, Saint Paul, Dallas, was voted as the seat for the next conference.

RESULT OF BALLOT—The tellers returned and the Bishop announced the results of the second ballot:

The number of ballots cast 109; defective, 1; number counted 108; necessary for choice, 55; T. B. Echols, 34; J. W. Weakley, 28; R. S. Mosby, 11; J. W. Warren, 11; A. M. Mason, 8; G. A. Deslandes, 8; T. H. Wyatt, 7; J. H. Swann, 1. No one having received the necessary number, the Bishop declared there was no election.

On motion of J. H. Childs, further balloting was deferred until the afternoon session.

Dr J. L. Farmer was introduced and gave the noon day message instead of Bishop Jones, on the subject: "The disciple of Jesus and His Reward."

ADJOURNMENT—The conference adjourned to meet at 3 p. m. with the Laymen Association. The doxology was sung, the benediction by Bishop Jones.

BISHOP R. E. JONES, President

C. W. FRANKLIN, Secretary

THIRD DAY—Afternoon.

The Bishop opened the Conference at 3 p. m.

QUESTION SIX—On motion of K. W. McMillan, the following characters passed and continued on trial in the studies of the first year: J. H. Brown, J. A. Thomas, N. W. Stephens, Henry C. Willis.

On motion of the Registrar the following were passed in character and advanced to the studies of the Second Year: C. E. Connor, G. M. Moten, F. M. Hudspeth, A. M. Harris.

QUESTION SIXTEEN—The Bishop announced the transfer of Allen M. Harris to the Texas Conference and T. H. Wyatt to the Little Rock Conference.

QUESTION TEN—On motion of the Registrar, M. C. Ellison, P. H. Moore, Esau Smith, T. J. D. Sims, T. M. Bruton, J. H. Strait, F. D. Young, were advanced to studies of Fourth Year.

THIRD BALLOT—The third ballot was taken and the tellers retired to count the same.

QUESTION TWENTY-FIVE—On motion of the Committee on Conference Relation, the following men were continued as Supernumerary Ministers: V. A. Cook, J. M. Foster, J. W. Maye.

On motion of T. H. Wyatt, the Bishop appointed a committee to investigate the matter thought objectionable with reference to L. H. Richardson. The committee is as follows: T. H. Wyatt, G. A. Deslandes and J. W. Warren.

RESULT OF THIRD BALLOT—The tellers returned and the Bishop announced the ballot as follows: Total number of votes cast 97; defective, none; necessary to choice 49; T. B. Echols, 67; J. W. Weakley 15; J. W. Warren, 12; A. M. Mason, 3; T. B. Echols having received the necessary number, was declared elected.

K. W. McMillan read his report as chairman of the Publishing Board, and upon motion of T. H. Wyatt, the board was re-appointed for next year.

On motion of Dr. R. N. Brooks, the matter of gifts and money received for Sam Huston College was ordered printed in the journal, the same to be paid by the college.

On motion of T. H. Wyatt the conference ordered that our conference board be recognized and that monies coming to the conference be paid through our conference treasurer.

BALLOT FOR RESERVE DELEGATES—The ballot for reserve delegates was taken and the tellers retired to count the same.

The Bishop presented K. W. McMillan, R. N. Brooks, T. B. Echols, T. R. Davis, J. S. Henry, and R. A. Atkinson as delegates elected to the General Conference, and each made brief remarks.

P. A. Hill, chairman of the Lay Electoral Conference was introduced and gave remarks as to the laymen position in support of the church program.

RESULT OF BALLOT FOR RESERVES—The tellers returned and the Bishop announced the result of the ballot as follows: Number of votes cast, 100; Defective, 4; number counted, 96; necessary to elect, 49; C. S. Williams, 59; J. W. Warren 58; J. W. Weakley 54; A. M. Mason, 23; R. S. Mosby, 20; R. M. Davis, 17; T. H. Wyatt, 18; G. A. Deslandes, 14; S. E. Jones, 6, S. D. Mosely, 6; W. M. White, 3; J. G. Browne, 2; J. L. S. Edmondson, 2.

The Bishop declared C. S. Williams, J. W. Warren, and J. W. Weakley elected, having received the necessary number.

K. W. McMillan read a resolution on Bishop Jones, thanking him for his work and life among us and asking at the same time that this conference with a unanimous vote ask the General Conference to re-assign him to the Area for another Quadrennium.

A resolution as printed in the journal was read and the conference voted that this resolution as touching the work of Sam Huston College be adopted, which was done by a unanimous vote.

ADJOURNMENT—The conference had announcements and doxology was sung, and we adjourned with the benediction by Bishop Jones.

BISHOP R. E. JONES, President
C. W. FRANKLIN, Secretary

FOURTH DAY—Morning Session

The Bishop called the conference to order at 9 a. m., with Rev. S. N. Harvey in charge of the devotions.

The journal of the previous day was read and approved.

DRAFTS—Doctor Broadhead was introduced and presented drafts for

S. E. Jones, 4; J. H. Swann, 2; J. H. Childs, 1. K. W. McMillan and R. N. Brooks, having received the required number were declared elected.

The second ballot was ordered and was taken and the tellers retired to count the vote.

SEAT OF THE CONFERENCE—On motion of J. H. Childs, Saint Paul, Dallas, was voted as the seat for the next conference.

RESULT OF BALLOT—The tellers returned and the Bishop announced the results of the second ballot:

The number of ballots cast 109; defective, 1; number counted 108; necessary for choice, 55; T. B. Echols, 34; J. W. Weakley, 28; R. S. Mosby, 11; J. W. Warren, 11; A. M. Mason, 8; G. A. Deslandes, 8; T. H. Wyatt, 7; J. H. Swann, 1. No one having received the necessary number, the Bishop declared there was no election.

On motion of J. H. Childs, further balloting was deferred until the afternoon session.

Dr J. L. Farmer was introduced and gave the noon day message instead of Bishop Jones, on the subject: "The disciple of Jesus and His Reward."

ADJOURNMENT—The conference adjourned to meet at 3 p. m. with the Laymen Association. The doxology was sung, the benediction by Bishop Jones.

BISHOP R. E. JONES, President

C. W. FRANKLIN, Secretary

THIRD DAY—Afternoon.

The Bishop opened the Conference at 3 p. m.

QUESTION SIX—On motion of K. W. McMillan, the following characters passed and continued on trial in the studies of the first year: J. H. Brown, J. A. Thomas, N. W. Stephens, Henry C. Willis.

On motion of the Registrar the following were passed in character and advanced to the studies of the Second Year: C. E. Connor, G. M. Moten, F. M. Hudspeth, A. M. Harris.

QUESTION SIXTEEN—The Bishop announced the transfer of Allen M. Harris to the Texas Conference and T. H. Wyatt to the Little Rock Conference.

QUESTION TEN—On motion of the Registrar, M. C. Ellison, P. H. Moore, Esau Smith, T. J. D. Sims, T. M. Bruton, J. H. Strait, F. D. Young, were advanced to studies of Fourth Year.

THIRD BALLOT—The third ballot was taken and the tellers retired to count the same.

QUESTION TWENTY-FIVE—On motion of the Committee on Conference Relation, the following men were continued as Supernumerary Ministers: V. A. Cook, J. M. Foster, J. W. Maye.

On motion of T. H. Wyatt, the Bishop appointed a committee to investigate the matter thought objectionable with reference to L. H. Richardson. The committee is as follows: T. H. Wyatt, G. A. Deslandes and J. W. Warren.

RESULT OF THIRD BALLOT—The tellers returned and the Bishop announced the ballot as follows: Total number of votes cast 97; defective, none; necessary to choice 49; T. B. Echols, 67; J. W. Weakley 15; J. W. Warren, 12; A. M. Mason, 3; T. B. Echols having received the necessary number, was declared elected.

K. W. McMillan read his report as chairman of the Publishing Board, and upon motion of T. H. Wyatt, the board was re-appointed for next year.

On motion of Dr. R. N. Brooks, the matter of gifts and money received for Sam Huston College was ordered printed in the journal, the same to be paid by the college.

On motion of T. H. Wyatt the conference ordered that our conference board be recognized and that monies coming to the conference be paid through our conference treasurer.

BALLOT FOR RESERVE DELEGATES—The ballot for reserve delegates was taken and the tellers retired to count the same.

The Bishop presented K. W. McMillan, R. N. Brooks, T. B. Echols, T. H. Davis, J. S. Henry, and R. A. Atkinson as delegates elected to the General Conference, and each made brief remarks.

P. A. Hill, chairman of the Lay Electoral Conference was introduced and gave remarks as to the laymen position in support of the church program.

RESULT OF BALLOT FOR RESERVES—The tellers returned and the Bishop announced the result of the ballot as follows: Number of votes cast, 100; Defective, 4; number counted, 96; necessary to elect, 49; C. S. Williams, 59; J. W. Warren 58; J. W. Weakley 54; A. M. Mason, 23; R. S. Mosby, 20; R. M. Davis, 17; T. H. Wyatt, 16; G. A. Deslandes, 14; S. E. Jones, 6; S. D. Mosely, 6; W. M. White, 3; J. G. Browne, 2; J. L. S. Edmondson, 2.

The Bishop declared C. S. Williams, J. W. Warren, and J. W. Weakley elected, having received the necessary number.

K. W. McMillan read a resolution on Bishop Jones, thanking him for his work and life among us and asking at the same time that this conference with a unanimous vote ask the General Conference to re-assign him to the Area for another Quadrennium.

A resolution as printed in the journal was read and the conference voted that this resolution as touching the work of Sam Huston College be adopted, which was done by a unanimous vote.

ADJOURNMENT—The conference had announcements and doxology was sung, and we adjourned with the benediction by Bishop Jones.

BISHOP R. E. JONES, President
G. W. FRANKLIN, Secretary

FOURTH DAY—Morning Session

The Bishop called the conference to order at 9 a. m., with Rev. S. N. Harvey in charge of the devotions.

The journal of the previous day was read and approved.

DRAFTS—Doctor Broadhead was introduced and presented drafts for

the Book Concern of \$1101.00 and from the Chapter fund \$40.00. On motion of S. D. Mosely, these were ordered turned over to the Board of Stewards.

QUESTION FIFTEEN—On motion of J. H. Shields, the character of J. W. V. Hutchinson was passed.

QUESTION FIVE—Upon the recommendation of the committee on Conference Relation and the report of the Registrar, the following men were admitted on trial: Marcus Freeman, W. M. Mosely, Joel S. Jordan, Z. E. King, Dee Tucker, Zan Holmes. By vote of the conference they were placed in the study of the First year.

QUESTION TWELVE—On motion of the district superintendents, the following men were elected to Deacons Orders: Joel S. Jordan, Zan Holmes, Dee Tucker, G. W. Kelley.

On motion R. N. Brooks, E. V. McRae was elected to elder's orders to be ordained elsewhere.

On motion the following men were left without appointment to attend school: B. F. Lee, Henry Tollerson, U. V. Green, J. L. Wattley, E. V. McRae, L. L. Haynes.

The Bishop announced the transfer of W. L. Turner from the Little Rock Conference to the West Texas Conference.

The Board of Stewards read their report and the same was adopted. See their report as printed in the Journal.

Dr. E. M. Jones was asked to take the chair.

The Statistician read his report and the same was adopted. (See Report.) The following Standing committees read reports:

Sunday Schools, Hospitals and Homes, Sabbath Observance, Epworth League, Foreign Missions, Board of Home Missions and Church Extension, W. H. M. Society, Episcopal fund, Deaconess, Resolutions, Treasurer of the Conference, Cabinet Observations, Ovation Day, West Texas Council of Religious Education, Summer Schools, Waveland Schools, Book Concern. (See Reports.)

At this point the Bishop resumed the chair.

The special committee in the case of the matter in the minutes touching L. H. Richardson made its report, which by order of the conference was adopted. (See Report.)

The Campfire Girls rendered several musical selections as an Orchestra, which were enjoyed by all. Miss Ruth Christopher read a paper and paid a special tribute to our Bishop and wife. They made a donation of \$10.00 to the work at Gulf Side.

Dr. E. M. Jones was again asked to preside.

Dr. R. G. Morris was presented and spoke in the interest of the rural pastors, schools, etc.

A collection of \$6.48 was taken to refund J. H. Childs' railroad fare in the case at Waco, for traveling exxpense.

An offering for J. W. Wattley was taken to the amount of \$24.25.

Mrs. S. E. Jones was presented by Bishop Jones and he announced her appointment as Corresponding Secretary of the W. F. M. Society of the Texas Conference.

Mrs. E. V. McMillan was also presented and the Bishop announced her appointment as Corresponding Secretary of the W. F. M. Society of the West Texas Conference.

ADJOURNMENT—The announcements were made, the doxology was sung and we adjourned to meet Sunday night in the final session. Benediction by Bishop Jones.

BISHOP R. E. JONES, President
C. W. FRANKLIN, Secretary

SUNDAY MORNING SERVICES

At 9 a. m., the conference assembled in a joint Church school session with J. M. Bumbry and A. C. Wilson and T. B. Echols in charge.

The Love Feast was conducted at 10 a. m., with Revs. J. E. Brown and M. L. Wyatt in charge.

K. W. McMillan, the District Superintendent of the San Antonio District, took charge of the service promptly at 10:30 and proceeded with the order of worship. After the regular disciplinary order was carried forward, he presented Bishop Jones, who took charge of the offering and collected \$66.00 for the morning.

Bishop Jones was presented at 11:30 and gave a very spiritual message from the subject, "Heavenly Warfare." Our hearts were moved to a larger service as he pictured the triumphs and the achievements of the church and especially the part the Christians can play by individual efforts.

AFTERNOON

K. W. McMillan had charge of the devotions and after the devotions, Bishop Jones with the assistance of the District Superintendents, Doctor Curry, Doctor Campbell, ordained the following Deacons: Dee Tucker, Zan Holmes, George W. Kelley, Joel S. Jordan. In this same service he ordained as elders the following men: H. J. Jackson, Luther L. Strait, Henry Tollerson.

At this point the Bishop and cabinet retired to complete the work of appointments, etc., and Rev. S. D. Mosely took charge and conducted the Memorial service for the following deceased men: J. C. Eusan and C. N. Strait. Mention was also made of Mrs J. D. Mackey and Little Ellen H. Mosby. Rev. S. E. Jones preached the sermon.

EVENING SESSION

The closing sermon was preached by Rev. C. S. Williams with the devotion in charge of T. W. Wyatt.

Doctor Donahue of the Board of Home Mission and Church Extension was introduced and spoke in an illuminating way of the work of the Board for the past Quadrennium.

At half past nine o'clock the Bishop with his cabinet came in and the

devotion was conducted by Bishop Jones. After the devotions, Mrs. Ratliff presented the bishop \$17.00 to express her interest in Gulf Side. Also the night's collection of \$22.18 was turned over to the Bishop by the officers and pastor to help on the work at Gulf Side.

On motion of K. W. McMillian after the appointments were read, that we adjourn Sine Die to meet in Dallas, Saint Paul, 1928.

The appointments were read and the doxology was sung, and the Bishop gave the benediction.

BISHOP R. E. JONES, President

C. W. FRANKLIN, Secretary

CERTIFICATE OF ORDINATION

San Antonio, Texas, December 4, 1927

This is to certify that I, a Bishop of the Methodist Episcopal Church, at San Antonio, Texas, on December 4, 1927, ordained the following men as Deacons, who were elected to this office by vote of the West Texas Conference that was in session:

Zan Holmes, Joel S. Jordan, Zebra King, Dee Tucker.

This certifies that on the same day and date, I ordained as Elders by vote of the same conference the following men:

Hilborne J. Jackson, Luther Strait, Henry Tollerson.

Signed:

ROBERT E. JONES, Presiding Bishop.

We do hereby certify that the above is a correct record of the proceedings of the fifty-third session of the West Texas Conference held at San Antonio, Texas, November 30-December 4, 1927.

BISHOP R. E. JONES, President

C. W. FRANKLIN, Secretary

Disciplinary Questions

here

Disciplinary Questions

1. (a) Is this annual conference incorporated according to the requirements of the Discipline? **It is.**

(b) What officers and persons holding monies, funds, etc., are bonded, and in what amounts, according to the requirements of the Discipline? (See report of Bonding Committee.)

2. Who have been received by transfer, and from what conference? Walter L. Turner from the Little Rock Conference.

3. Who have been re-admitted? There are none.

4. Who have been received on credentials, and from what church? Henry H. Harrison, an Elder from the African Methodist Episcopal Church.

5. Who have been received on Trial?

(a) In studies of the First Year: Marcus Freeman, Joel S. Jordan, Zan Holmes, Zebra King, Dee Tucker.

(b) In studies of Third Year under Seminary Rule: There are none.

6. Who have been continued on Trial?

(a) In studies of First Year: John H. Brown, Newton W. Stephens, Henry C. Willis, Jacob A. Thomas.

(b) In studies of Third Year: Frank Blair, Thomas H. Bryant, Henry Kuykendall, John H. Marshall, Marshall Majors, Clinton Schuler, Rell L. Palmer, John A. Willis, E. T. Allen, Obie B. Coe, U. V. Green, Douglas L. Mosby, Ila H. Pierce.

(d) In studies of Fourth Year: Thomas M. Bruton, John H. Strait, Frederick D. Young, Manny C. Ellison, Philip H. Moore, Esau Smith, Thomas J. D. Simms.

7. Who have been discontinued? There are none.

8. Who have been admitted into full membership?

(a) Elected and Ordained Deacons this year. There are none.

(b) Elected and Ordained Deacons previously. Frank Blair, Thomas H. Bryant, Henry Kuykendall, John H. Marshall, Marshall Majors, Clinton Schuler, Rell L. Palmer, John A. Wills.

(c) Elected to be ordained elsewhere. There are none.

9. What members are in studies of the Third Year?

(a) Admitted into full membership this year. Frank Blair, Thomas H. Bryant, Henry Kuykendall, John H. Marshall, Marshall Majors, Clinton Sshuler, Rell L. Palmer, John A. Wills.

(b) Admitted into full membership previously: E. T. Allen, Obie B. Coe, U. V. Green, Douglas L. Mosby, Ila H. Pierce.

10. What members are in studies of Fourth Year? Manny C. Ellison, Philip H. Moore, Eusa Smith, T. J. D. Simms, Thomas M. Bruton, F. D. Young, John H. Strait.

11. What members have completed the Conference Course of Study?

(a) Elected and ordained elders this year. Hilburne J. Jackson, Luther L. Strait, Henry Tollerson.

- (b) Elected and ordained elders previously. There are none.
- (c) Elected and ordained elders under the Seminary Rule. None.
- (d) Elected to be ordained elsewhere. Everage McRae.
12. What others have been elected and ordained deacons?
- (a) As local preachers. George W. Kelly, Joel S. Jordan, Zan Holmes, Dee Tucker.
- (b) Under Missionary Rule. There are none.
- (c) Under the Seminary Rule. There are none.
13. What others have been elected and ordained elders?
- (a) As local Deacons. There are none.
- (b) Under Missionary Rule. There are none.
- (c) Elected by this conference and ordained elsewhere. Everage McRae
14. Who have been left without appointment to attend one of our schools? B. F. Lee, Henry Tollerson, U. V. Green, J. L. Wattley, Everage McRae, Leonard L. Haynes.
15. Was the character of each preacher examined? This was strictly done in open conference.
16. Who have been transferred and to what conference? Allen M. Harris to the Texas Conference, Thomas H. Wyatt to the Little Rock Conference.
17. Who have died? J. C. Eusan, and C. N. Strait.
18. Who have been located at their own request? There are none.
19. Who have been located? There are none.
20. Who have withdrawn?
- (a) From the ministry. There are none.
- (b) From the ministry and membership of the church. There are none.
- (c) By surrender of the ministerial office. There are none.
21. Who have been deprived of the ministerial office? There are none.
22. Who have been permitted to withdraw under charges or complaints? There are none.
23. Who have been expelled? There are none. --
24. What other personal notations should be made? There are none.
25. Who are the supernumerary preachers, and for what number of years consecutively has each held this relation? Victor A. Cook (2); J. W. Maye (2); J. M. Foster (4).
26. Who are the retired ministers? Alfred Brown, James Coe, Enoch Cogswell, E. E. Cooper, R. H. Duncan, Mumford Fountain, S. W. Harvey, J. H. Hutchinson, M. S. Jordan, C. B. Melton, T. S. Moore, George Pleasant, W. M. Reed, N. H. Townsend, J. W. Wright.
27. Who have been granted leave of absence? There are none.
28. Who are the triers of Appeals? R. M. Davis, A. D. Jacques, C. E. Whitiker, J. W. Warren, W. L. Turner.
29. What is the annual report of the Conference Board of Home Missions and Church Extension? (See Report.)
30. What is the annual report of the Conference Board of Foreign Missions? (See Report.)

31. What is the Statistical report? (See Report.)
32. What is the Conference Treasurer's report? (See Report.)
33. What is the aggregate of the Benevolent collections ordered by the General Conference, as reported by the conference treasurer? \$11,499.00.
 (b) What is the aggregate of the Benevolent collection as ordered by annual conference, as reported by the conference treasurer? \$2,041.00.
34. What are the claims on the Conference Funds?
 (a) for annuity distributions, \$10,604.00.
35. What has been received on these claims?
 From the Book Concern, \$1,101.00.
 From annual conference investment, \$176.00.
 From the chartered fund, \$40.00
 From pastoral charges, \$826.49
 From Board of Pensions and Relief, \$600.00.
 From other sources, \$000.00
 Total, \$2,654.08.
 (b) How has it been applied? (See Steward's Report.)
36. What amount has been apportioned to the pastoral charges within the conference, to be raised for the support of Conference Claimants? \$10,000.00.
37. What amount has been paid by the conference treasurer to the Board of Pensions and Relief for the Connectional Fund? None.
38. Is there a conference sustentation society, and what is its report?
 There is no such society.
39. Where are the preachers stationed? (See list of appointments.)
40. Where shall the next conference be held? Dallas, St. Paul Church, K. W. McMillan, pastor, 1814 Burford Street, Dallas, Texas.



Conference Appointments

Appointments.

AUSTIN DISTRICT

S. E. Blacknell, District Superintendent, Samuel Huston College, Austin, Texas

Austin:

Austin Circuit.....Zan Holmes, Sam Huston College, Austin, Texas
Simpson.....A. D. Jacques, Austin, Texas
Wesley.....W. L. Turner, 1163 San Bernard St., Austin, Texas
Cedar Creek Circuit....L. L. Strait, Sam Huston College, Austin, Texas
Fayetteville Circuit (supply).....Landry Smith, Fayetteville, Texas
Georgetown.....J. J. Hardemon, Georgetown, Texas
Giddings-Littig-Manor.....J. W. Stone, Sr., Giddings, Texas
Hutto-Granger.....J. S. Jordan, Sam Huston College, Austin, Texas
LaGrange Circuit.....J. S. Medlock, LaGrange, Texas
Lockhart Circuit.....T. M. Bruton, Lackhart, Texas
Luling Circuit.....Robert S. Mosby, Luling, Texas
Smithville Circuit.....Marshall Majors, Smithville, Texas
San Marcos Circuit (Supply).....G. W. Kelly, San Marcos, Texas
Winchester Circuit.....Clenton Schuler, Winchester, Texas

CORPUS CHRISTI DISTRICT

C. W. Franklin, District Superintendent, 1323 Paso Hondo Street,

San Antonio, Texas

Beeville Circuit.....L. W. Roberts, Box 223, Beeville, Texas
Bishop-Robstown.....Dave Johnson (Supply) Robstown, Texas
Bloomington Circuit.....J. H. Brown, Bloomington, Texas
Brownsville.....To be supplied
Corpus Christi.....W. M. White, 1109 Mamerez St., CorPus Christi, Texas
Cotulla.....Joe Young (Supply)
Eddinburg Circuit.....Z. E. King, Eddinburg, Texas
Falfurias.....Solomon Johnson
Goliad.....R. W. Allen, Box 100, Goliad, Texas
Harlingen.....Marcus Freeman, Harlingen, Texas
Kingsville.....H. O. McCutchin, Kingsville, Texas
Mathias-Alice.....I. S. Simpson, (Supply) Mathias, Texas
Odem.....W. M. Bennet (Supply) Odem, Texas
Raymondville.....Matt King (Supply) Raymondville, Texas
Sinton-Taft.....George Means (Supply) Sinton, Texas
Weslaca Circuit.....Emmett Bennett (Supply)

DALLAS DISTRICT

J. H. Childs, District Superintendent, 2817 Thomas Ave., Dallas, Texas

Corsicana-Angus	P. H. Jenkins, 1205 E. 10th St, Corsicana, Texas
Dallas:	
St. Paul	K. W. McMillan, 1814 Burford St., Dallas, Texas
Trinity	J. H. Strait, Route 7-78, Dallas, Texas
Warren	J. D. Rice, 3710 State St., Dallas, Texas
Wesley-Calvary	C. T. Wardah, 1814 Burford St., Dallas, Texas
Denison	J. H. R. Dudley, 619 Fannin St., Denison, Texas
Ennis-Ferris	J. B. Phoenix, Ennis, Texas
Fort Worth:	
Cowan Chapel	J. A. Wills, Route 4-57, Fort Worth, Texas
St. Andrews	R. M. Davis, 1024 South Main St., Fort Worth, Texas
Thompson	S. E. Jones, Box 92, North Fort Worth, Texas
Hillsboro	C. E. Connor, Route 5, Mexia, Texas
Hubbard-Dawson	P. H. Philips, Hubbard, Texas
Mexia Circuit	H. A. Jones, Route 5-1030, Mexia, Texas
Milford-Italy	H. J. Jackson, Milford, Texas
Maypearl	W. W. White, Route 1, Reisel, Texas
Pelham Circuit	L. E. Muse, Route 3, Hubbard, Texas
Pilot Point	Robert Minifee, Pilot Point, Texas
Sherman	Frank Blair, 1007 N. East St., Sherman, Texas
Waxahachie	B. J. Easter, 104 Wyatt St., Waxahachie, Texas
Wichita Falls	J. W. Stone Jr., Box 1512, Wichita Falls, Texas

SAN ANGELO DISTRICT

H. H. Qualls, District Superintendent, Box 82, Temple, Texas

Abilene	G. V. Cavett, 621 North 6th St., Abilene, Texas
Bartlett	I. H. Pierce, Box 411, Bartlett, Texas
Belton Circuit	B. A. Byars, Belton, Texas
Brownwood Circuit	J. E. Brown, Box 743, Brownwood, Texas
Cleburne	R. A. Applin, North Fort Worth, Texas
El Paso	F. J. Hutchinson, 2021 Myrtle St., El Paso, Texas
Knox City	A. B. Johnson (Supply)
Liberty Hill	R. Alonzo, (Supply)
Llano	P. H. Moore, Box 244, Llano, Texas
Lubbock Circuit	R. F. Blackman (Supply) Lubbock, Texas
Moody Circuit	T. H. Foy, Moody, Texas
San Saba	C. H. Hamilton, Box 283 San Saba, Texas
San Angelo	M. L. Wyatt, 602 North Randolph St., San Angelo, Texas
Temple	D. B. Baker, Box 82, Temple, Texas
Valley Mills Circuit	T. J. D. Simms, Valley Mills, Texas
Winters Circuit	Joe Black (Supply)

SAN ANTONIO DISTRICT

**G. A. Deslandes, District Superintendent, 235 Blue Bonnet Street,
San Antonio, Texas**

Belmont Circuit.....E. T. Allen, Route 3-39, Luling, Texas
Cuero.....W. B. Lott, Cuero, Texas
Floresville Circuit.....D. L. Mosby, Floresville, Texas
Gonzales.....M. C. Ellison, Gonzales, Texas
Gonzales Circuit.....J. D. Mackey, Gonzales, Texas
Hondo-Uvalde.....O. B. Coe, Hondo, Texas
Kerrville Circuit.....A. G. Russell, Kerrville, Texas
Lavernia Circuit.....J. H. Napier, Route 3, San Antonio, Texas
Nixon Circuit.....J. B. Eggleston, Nixon, Texas
Olmos.....Elmo Watson, (Supply) Seguin, Texas
Pearsall Circuit.....N. W. Stephens, 1325 S. San Marcos, San Antonio, Texas
Pleasanton Circuit.....H. L. McKenney, 521 N. Palmetto Ave, San Antonio, Texas
Seguin.....J. F. Muse, Box 11, Seguin, Texas
San Antonio:
E. St. Paul.....J. L. S. Edmondson, 211 Lockhart St., San Antonio, Texas
Jacobs.....J. W. Weakley, Box 67, San Antonio, Texas
Jones.....C. E. Whitiker, Sta. A, Box 253, San Antonio, Texas
Lincoln.....F. M. Hudspeth, 118 Conolly St., San Antonio, Texas
Sanford.....M. W. Stephens, 1126 San Fernando, San Antonio, Texas
St. Paul.....J. W. Warren, 130 N. Mesquite St., San Antonio, Texas
Heights.....H. C. Willis, 1903 Dawson St., San Antonio, Texas
Yorktown Circuit.....E. C. Henderson, Hallettsville, Texas

WACO DISTRICT

J. W. Downs, District Superintendent, 1025 S. 10th St., Waco, Texas

Aquilla Circuit.....H. E. Kuykendall, 1112 Payne St., Waco, Texas
Bremond Circuit.....G. F. Alexander, Bremond, Texas
Bowman.....John Coe, Route 3, Marlin, Texas
Cameron.....S. Keese, 1209 Chestnut St., Waco, Texas
Calvert.....W. W. Baker, Box 77, Calvert, Texas
Chilton.....Fred Young, Chilton, Texas
Frosa.....R. L. Palmer, Route 6-96, Marlin, Texas
Groesbeck.....N. J. Moore, Groesbeck, Texas
Highbanks.....J. A. Thomas, Highbanks, Texas
Kosse.....Dee Tucker, Route 5, Mexia, Texas
Lott.....Fred Wilson (Supply) Lott, Texas
Lorena.....E. G. Gray (Supply) 2108 Bagby St., Waco, Texas

Maysfield.....Esau Smith, Route 1, Box 101, Maysfield, Texas
 Marlin.....J. G. Browne, Marlin, Texas
 Rocky Circuit.....I. T. Sandford, 1136 Elm, Waco, Texas
 Satin—Majors.....A. D. Holden, Satin, Texas
 Waco:
 Jones.....Sam Graham, 1007 Wood St., Waco, Texas
 Mt. Zion.....S. N. Harvey, 605 Malborough St., Waco, Texas
 St. James.....C. S. Williams, 612 S. Second St., Waco, Texas
 Waco Circuit.....G. M. Moten, Route 3, Waco, Texas

VICTORIA DISTRICT

W. M. Ellison, District Superintendent, Box 525, Yoakum, Texas

Alleyton Circuit.....A. C. Holden (Supply) Alleyton, Texas
 Cologne Circuit.....Henry Harrison, Fannin, Texas
 Columbus.....George Waters, Columbus, Texas
 Columbus Circuit.....D. F. Vance, Altair, Texas
 Edna Circuit.....J. T. Carper, Edna, Texas
 Garwood Circuit.....T. H. Bryant, Alleyton, Texas
 Hallettsville Circuit.....G. M. Mallory, Hallettsville, Texas
 Oakland Circuit.....J. N. Hooey, Oakland, Texas
 Schulenburg.....A. M. Mason, Schulenburg, Texas
 Sublime Circuit.....W. M. Mosely, R. 7-78, Hallettsville, Texas
 Victoria.....S. D. Mosely, Victoria, Texas
 Weimar.....Jack Caesar (Supply) Hallettsville, Texas
 Wharton.....J. H. Marshall, Wharton, Texas
 Yoakum.....J. H. Swann, Box 562, Yoakum, Texas

SPECIAL APPOINTMENTS

R. N. Brooks, Professor in Gammon Theological Seminary, Atlanta, Ga.,
 Membership Wesley quarterly conference.

T. B. Echols, Professor in Sam Huston College, Austin, Texas. Member-
 ship Simpson Tabernacle Quarterly Conference.

Henry Tollerson, B. F. Lee, J. L. Wattley, L. L. Haynes, E. V. McRae,
 U. V. Green left without appointment to attend school.

Mrs. S. E. Jones, Corresponding Secretary W. H. M. Society, with mem-
 bership in Thompson Chapel quarterly conference, Fort Worth, Texas.

Mrs. E. V. McMillan, Corresponding Secretary W. F. M. Society, with mem-
 bership in St. Paul Quarterly conference, Dallas, Texas.

J. W. V. Hutchinson, Educational Worker.

BISHOP R. E. JONES, Presiding Bishop

K. W. McMILLAN, Secretary of Bishop's Cabinet

Annual Reports

Annual Reports

SAN ANTONIO DISTRICT

K. W. McMillan, Superintendent

Mr. President:

It becomes my duty as Superintendent of the San Antonio District to report the work of the district and the condition of the same.

I am happy to know that as Superintendent and pastors of the district we have enjoyed a reasonable degree of success this year. God has led us steadily on with His unfaltering hand and we feel that we have been kept as the apple of His eye, and whatever we have been able to do, He has taken the lead and all praise to Him for whatever has been accomplished.

We have felt the hand of death this year, which has brought sorrow to our ranks, but in the midst of it all we have said: "Thy will, O Lord, be done."

On February 21, Rev. J. C. Eusan, our pastor of West End Church, was stricken and died almost momentarily after having filled his pulpit on Sunday, he fell a victim to death on Monday. We share whatever grief comes to the family for the loss of this giant in Israel.

Later in the spring, the blessed wife of Rev. J. D. Mackey, after a long and continued illness, also was claimed by the same grim monster, and thus the second time for the immediate ranks of the ministry, we bowed our heads and said: "Blessed are the Dead who die in the Lord."

Territory

Our work has not been so strenuous this year as of former years, because of the decrease in our territory and the amount of travel that we have had to do, which has been far less, totaling more than 1500 miles for the entire year's work. We have looked carefully after all the interest of the work, however, and doing as best we could to build the kingdom in earth as it is in heaven.

Pastors

The pastors have been faithful. I would have you know, Bishop, that even though times and crop conditions have been strenuous, but even at that we trudged along with a degree of fidelity that has been charming on the part of the men who have shouldered the burdens of debt and church benevolence. In most cases we have had increases in Benevolent reports, and some in pastors' salaries. Church debts have been decreased more than \$5,000.00 throughout the district, and the people are to be counted praiseworthy for the excellent spirit manifested in the growth of the churches in the district. Each pastor will report his work, giving the amount of salary, benevolences raised, improvements due and such other items as this session may order reported.

Revivals

We have had no sweeping revivals. We have been content it seems to conduct in the usual way a protracted meeting with but meager results. We have had some additions but not as a result of great revival meetings held. Perhaps we added 300 to the church membership through the year.

District Meetings

We have held one district conference, one Sunday School and Epworth League Institute, one W. H. M. S. and W. F. M. Society Convention for the year and pleased to report that this work having had its beginning on the district three years ago, we are growing in interest and numbers. Young people are being quickened to their duty as workers for this kind of contact and fellowship in our institutes.

The educational program carried forward in our Institute is praiseworthy. Our faculty has been as good as we have been able to find in any of our Institutes:— Drs. F. H. Butler, W. L. Turner, E. W. Kelly, R. M. Davis, G. A. Deslandes and Revs. R. S. Mosby and C. E. Whitiker, J. W. Weakley constitute the members of our faculty and with this line of men to lead and direct the affairs, we feel that we might congratulate ourselves for having had their services.

Benevolences

The benevolent interest of the church has been carefully looked after. According to the requirements of the discipline, we have urged that all committees be appointed and that collections be taken for every interest of the church. Just how well we have done our work, you will be able to ascertain when the pastors make their reports.

Quarterly Conferences

We have held and caused to be held 80 quarterly conferences in the district. We have tried to make these meetings effective and mean more to us than in former years by filling in with musical and literary numbers, all of which have given strength and charm to the work. To this end I have sought to add my word of emphasis to the **Life Service and Stewardship Program** of the church, which seems to be gripping a few of our young people as well as one or two older ones here and there.

New Work

Mr. President, we are happy to report two new church organizations in the city of San Antonio, since coming to this district.

The East St. Paul church, we count as one of the outstanding projects

of this three years administration, where we have gathered a beautiful group of members to the number of about 100 at this writing, with a modern parsonage built and furnished for the preacher's home and a beautiful church building for worship and rooms where we carry forward the educational work of the church as well.

Four Sunday school rooms, Reception room, Library with a few books already installed, kitchen that is already equipped and a dining room 22x30 feet, where we can feed at least 100 persons at one time, with chairs and equipment that will be almost unbelievable for the first two years of this organization. A parsonage and church like this with only a debt of little less than \$10,000.00 seems rather marvelous since coming to the district.

Then in West San Antonio Heights, we have organized a little band of Methodist believers, fifteen in number with a lot purchased and nearly half paid for and money to build a tabernacle for worship through the winter month. We count these projects worthwhile in a cosmopolitan city like San Antonio. If we could have in the heartiest way the co-operation of all our pastors, instead of seven organized churches, we could easily have a dozen within the next three years, if I remain on the district.

My Special Duties as District Superintendent

I have traveled throughout the district as per disciplinary requirements, and in the absence of my Bishop, I have presided at district conference and have supplied pulpits with the advice and suggestions of my bishop.

Since the death of Rev. J. C. Eusan,—we placed Rev. C. W. Franklin at West End, but after doing this, we discovered early that with the many duties connected with the building program at East St. Paul that he would not be able to take care for the pastorate of both churches, hence we attempted to relieve Reverend Franklin, by placing Rev. H. L. McKinney at West End and the placing of Brother Joe Young, a supply, at Pleasanton, but we found that the people would not consent for this change, we placed Brother McKinney back to Pleasanton and relieved Brother Young, and fortunately we found the Rev. C. T. Wardah having been left without an appointment to attend school and being without work, as late as August, we placed him at West End and he has been succeeding in a nice way, and he will report the work of West End.

I have looked carefully after the spiritual interest of the district as well as the temporal interest. Our deeds and charters conform strictly to the requirements of the church, and our property for the most part is well insured. One or two exceptions.

We have urged the payment of the Episcopal fund as well as that of General Conference expense.

We have no questions of law, etc., for decisions, hence no agreements nor disagreements in the form of appeals.

It has been our good pleasure to have our Bishop for a visit within the

bounds of our district once this conference year, and he was the guest of my home, and as per discipline, I attended him while in the bounds of the district.

We have urged the hearty support of our people everywhere in their support for our educational institution, Sam Huston College, and have directed as far as possible, our young people to attend this school.

Mr. President:

We have done the best we could for our year's work. Cotton crops have been spotted throughout my district, and money has not been as flourishing as we have desired, but we have gone forth and have done the best we could to represent Christ and bring His Kingdom in earth as it is in Heaven.

Faithfully submitted,

K. W. McMILLAN, Superintendent

DALLAS DISTRICT

J. H. Childs, Superintendent

Dear Bishop and Brethren:

It is with gratitude to God that we present to you, this our Second Annual report of the Dallas District.

First: Spiritual and Evangelistic Work

A careful survey of the work showed a great need for a more definite Spiritual and Evangelistic organization among the charges. This being done, revivals were held, conversions in practically every charge. Accessions and an increase in attendance.

Second: A Stewardship Campaign

In order to more fully understand the use of time, means and life, as such relate to kingdom building. Much stress has been put upon the subject of stewardship, as a result, more have been given of time, means and decision of life work made.

Third: Samuel Huston College

An intensive drive for Samuel Huston College, placing its standing and classification more fully before the young people, resulted in giving of more than \$700.00 and placing 10 students in attendance. The icy condition broken in the city of Dallas and 8 students from the High school class.

Fourth: World Service

The pastors seem to have entered upon the year's work, fully touched with the World's Needs, both home and abroad. The laymenn soon caught the spirit, as a result, \$2100 were reported from Easter offerings. The conference year will give an increase over last by at least \$250.

Fifth: Paid on Old Indebtedness

In spite of financial depressions which prevailed throughout two-thirds of the year, it has been one of the best we have had for paying church debts. More than \$7000 have been paid on old debts.

Sixth: Developments and New Undertakings

One of the most praise-worthy developments in the history of the conference fir smetime, is the completion of Trinity Church, North Dallas, thus giving us two splendid buildings in Dallas. A new mission in Oak Cliff, Dallas, Extension Sunday school Mission in East Fort Worth, a splendid church purchased from the white people and moved to proper location on the Mexia Circuit and more than 200 feet of paved walk placed in front and around St. Paul Church, Dallas. Work is now going forward upon a splendid new church building at Lancaster.

Woman Home and Foreign Missionary Societies

These societies under the leadership of the good women have gone forward with outstanding success. Notwithstanding the death of Mrs. L. A. Richie, which came like thunder out of a clear sky. Mrs. Richie had given her life to work.

Sunday Schools, Epworth Leagues and other Young People's societies have been given much attention and careful supervision; as a result many of the young people have made decision and signed for definite life service.

I have held one district conference, a meeting for the District Stewards, an Institute of the Epworth League and a Sunday School Convention. I have held or caused to be held four quarterly conferences in each charge.

The report of the pastors will show what has been accomplished in each charge.

Faithfully submitted,

J. H. CHILDS.

CORPUS CHRISTI DISTRICT

Mr. President, Fathers and Brethren:

It becomes my duty as Superintendent of the Corpus Christi District, the

baby district, to report the work of the district and the condition of the same.

It is gratifying to know as District Superintendent and pastors of the district we have suffered no loss in our immediate rank. God has led us steadily on with his unfaltering hand and we appreciate the fact that whatever we have been able to do, his strong hand upheld us.

Territory

The baby district embraces 15 counties in which we have church interest and outlook. I mean by that to say that every three months we travel through fifteen counties, which makes very expensive arduous.

Mr. President, from Goliad to Brownsville, is about 350 miles and yet there comes a satisfaction in knowing that this is the gateway to the Southern section of this great state.

Withing this territory we started with only five pastoral charges: Beeville Circuit, 42 members; Corpus Christi, 60; Goliad, 85; Kingsville, 60; Placedo Circuit, 37; total, 280 members. Our work on the district is as follows:

Beeville Circuit, Rev. Lewis W. Roberts, pastor. This is Brother Roberts' third year. He is a strong preacher and a hard worker, and knows how to bring things to pass. Brother Roberts and the good people of Beeville entertained the first district conference of the Corpus Christi District in grand style. Brother Roberts has paid on the old debt more than \$500.00 this year, leaving a balance of about \$400.00. Electric lights have been installed in the church and on the play ground, he will make a good report.

Corpus Christi, Rev. W. M. White, pastor. This is Brother White's second year. He has worked under hard conditions and will make a good report.

Bishop, Corpus Christi is destined to be one of the greatest cities in the Southwest, because of deep water that has been obtained. Boats are coming directly from New York to Corpus Christi, with dry goods and other commodities. Twenty-eight counties have agreed to ship their cotton crops via Corpus Christi. Many of our people have found employment at the docks which is quite a relief to labor conditions. A wide awake leader with a real program should mean much to Methodism in Corpus Christi.

Goliad. Rev. R. W. Allen, Pastor. This is Brother Allen's first year. He is a good preacher and a commendable pastor. He knows how to put the program over. He brings a round report. A recently equipped play ground is proving quite an asset to the program of the church.

Kingsville. Rev. F. Mason Hudspeth, pastor. This is Brother Hudspeth's second year. Although he was away about 3 weeks under the care of a physician, he was able to return and to put over the program in grand style. He brings a round report. The leading white citizens of Kingsville have said to me that this Christian leadership and progressive program have proved more effective in improving the social and moral condition of the colored community than the efforts of the officers of the law. The playgrounds embracing a

lots, is the center of attraction for young and old. Brother Hudspeth is a safe leader.

Placedo Circuit. Rev. J. H. Browne, pastor. This is Brother Browne's second year and it has proven to be the greatest year of his ministry. He has held three revivals and several souls were happily converted and added to the church. He brings a round report. Brother Browne and the good people of Long Mott, entertained the Institute. Not a stone was left unturned to make it pleasant for the delegates.

New Organizations

Bishop Circuit, Rev. D. D. Johnson, Pastor. Brother Johnson is a supply, but a zealous worker. We organized with five members and have worked steadily and have increased the membership to twelve, and have a commendable sum of money in the treasury for building purposes.

Mathis and Alice, Rev. S. J. Johnson, pastor. Brother Johnson is also a supply. Brother Johnson has held one revival which resulted in ten conversions. With Southern Pacific planning the erection of railroad shops and the citizens planning to develop the rich farm lands in and about Alice, we see wonderful possibilities for Methodism in this section.

Odem Circuit, Rev. W. M. Bennett, pastor. Brother Bennett is a supply. Brother Bennett called the people together and organized with eight members in the first quarterly conference. Thirteen persons were converted and added to the church. With some money and the right type of leadership, Methodism should hold its rightful place in the community. We have now a membership of 27. We had no school in the community for Negroes. Parents were sending their children from 12 to 15 miles to the nearest school. As a result of our placing the matter before the trustees, we now have a new public school building, with the pastor's daughter, Miss Edna Bennett, a graduate of Prairie View, as teacher.

San Juan Circuit, Rev. Z. E. King, pastor. Brother King, a supply, is verily on the job. He organized with six members and built a neat little church 18x36. We owe about \$200.00 on lot and building. He has bought a lot in Eddingburg and is holding services in Weslaco. He is a safe leader.

The Corpus Christi district was born in Victoria, December 12, 1926. She made her first step in the Group meeting held in Goliad, Texas, in January. The baby seemed to be a little forward; she actually walked without crawling. Looking at the baby and thinking of its future, all of the pastors were encouraged and pledged to do their bit to make possible her advent into the New Orleans Area. At the District Conference, May 3, it was the concensus of opinion that the Corpus Christi District was no more a dream, but a reality.

Faithfully submitted,

J. J. HARDEMON.

SAN ANGELO DISTRICT

Dear Bishop, Fathers and Brethren:

It is with joy and heartfelt gratitude to our Heavenly Father, that I come to make this my third annual report as district superintendent of the San Angelo District.

To begin with, I am proud to report that none of our men have fallen by the sword of death, that peace and harmony prevails throughout the District and that we have a set of hard working, sacrificing heroes. When we say the San Angelo district, we refer to the Western part of Texas; that part of Texas where we seem to come in contact with the impossibilities; where some of the men must plead for World Service money to people who have never seen a train; where the preacher in making his circuit must travel across counties where it is established that a Negro must not let the sun go down on him in the said county.

But out of all, the Lord has brought us safe thus far and every man has succeeded in some way.

We began our work immediately after the adjournment of the Annual Conference, with Rev. D. B. Baker in Temple. This is Reverend Baker's first full year in Temple and a year that I am sure will be remembered by him. The church debt was in a very bad condition, law suits were threatening; on one occasion he had only thirty days in which to raise \$1000.00, but he has proven to be the man of the hour; he has paid \$1500.00 on church debt, raised his world service quota, had a good revival, has had several conversions and accessions, every interest of the conference has been looked after.

Belton Circuit, Rev. W. W. Baker, pastor, This is Reverend Baker's third year on this work. He has paid off all old indebtedness, had a revival with several conversions and 15 accessions. His report will show that every interest of the church has been looked after. He is a good preacher and a splendid pastor.

Bartlett Circuit, Rev. I. H. Pierce, pastor. This is Reverend Pierce's first year on this circuit and it has been a wonderful year for him. He has painted and made some needed repairs on the church and paid for the same; had a good revival with 58 conversions and accessions to the church. Every interest of the conference has been looked after.

Moody Circuit, Rev. T. H. Foy, pastor. This has been a good year for Reverend Foy. He has put over a much needed program at Moody by the purchasing of a new lot and the building of a new church at the cost of \$2500.00. All claims have been looked after. His report will show an advance of last year.

Valley Mills Circuit, Rev. T. J. D. Simms, pastor. This is Reverend Simms first year on this circuit. At the beginning it seemed to have been a little hard for Reverend Simms, but as the year grew older, he grew more in the hearts of his people. He has erected a parsonage; had one revival with some conversions and accessions. He has done well under conditions, as quite a few of his people have moved to the West.

Llano Circuit, Rev. P. H. Moore, pastor. This is Reverend Moore's first year on this work. Reverend Moore knows no failure. He has had a good year and has put over a real good program, bought and paid for a neat parsonage at Llano, at a cost of \$750.00, and has perfected plans for a church building at Mason. All interest of the church has been looked after as his report will show.

San Saba and Brady, Rev. C. H. Hamilton, pastor. Reverend Hamilton has proven beyond any doubt to be a real preacher and leader. He was the entertainer of the District Conference. He has paid off the old church debt; has painted and made some needed repairs on the church and paid for the same. Had a good revival with several accessions to the church. His report will show that every interest of the church has been looked after.

Brownwood Circuit, Rev. J. E. Brown, pastor. Reverend Brown happened to be one among the many who never thinks of failure. He has put over a wonderful program this year. Special mention should be made of the proposition at Ballinger, where he has had a few scattering members with nowhere to worship, not even a lot. I do not know where Reverend Brown got the money from, but by some means he personally bought a lot at a cost of \$150.00, deeded and donated it to the Methodist Episcopal Church; built a neat little church which makes Ballinger a good preaching place. Every interest of the church has been looked after; had one revival with several conversions and accessions.

Abilene, Rev. G. V. Cavett, pastor. This is Rev. Cavett's first year at Abilene. Reverend Cavett has labored under some adverse circumstances, caused by sickness, but nevertheless he went and worked with a determination to put it over; has had one revival with some accessions; has looked after every interest of the church as his report will show.

Lubbock, Rev. R. F. Blackman, pastor. This is an entire new field. We first started off with Rev. Joe Black, but soon found the Reverend Black was not able to handle the situation, so Reverend Blackman took the work in charge, and has done well towards developing the work; has bought and paid for one lot and is now preparing to build a meeting house which will make Lubbock a very good appointment.

El Paso, Rev. F. J. Hutchinson, pastor. This is Reverend Hutchinson's first year at El Paso. He has raised the banner high, made some wonderful improvements upon the living quarters by the addition of two extra rooms, which was paid for in cash; paid a neat sum on the old debt and his report will show that he has taken care of every interest of the church.

San Angelo, Rev. M. L. Wyatt, pastor. It seems as if Reverend Wyatt was cut out for San Angelo and the people of the town say that the longer he stays the better he gets. Reverend Wyatt has put over a program in San Angelo that is hard to beat. He paid all old indebtedness, made some needed improvements on the church and parsonage; installed new electric lights in the church, all of which have been paid for; had a good revival with several conversions and accessions and his report will show that every interest of the church has been looked after.

Now, Bishop and brethren, we have done our best; we have held or caused to be held, four quarterly conferences in each place. We have traveled over Nineteen (19000) Thousand miles. We have been all the help to the men and people at large, that we could. We have tried to look after every interest, of the church, and every man has stood by me. The people are drifting Westward and must be taken care of. Lots of work needs to be done in the West and we appreciate the fact that every man has proven to be equal to the task.

Yours,
S. E. BLACKNELL.

VICTORIA DISTRICT

W. M. Ellison, Superintendent

Dear Bishop and Brethren of the West Texas Conference:

It is with joy and a heart of gratitude that I am here at the seat of this Annual conference to make my first report as District Superintendent of the Victoria District. Time has let down the curtains and closed behind us another year's work. Whether the pastors of the Victoria District and this your humble servant, have done our best, our reports will tell.

Bishop, not a greater band of self-sacrificing workers are to be found than these men that it has been my pleasure to work with this conference year. We have no slackers among them, but every man of them has been hard at it all of this year.

While we have not been able to accomplish all that we had planned and desired to do, yet their reports will show to a man that all have been busy.

From the seat of the last annual conference held at Victoria, every pastor of the Victoria District received his marching orders from the hands of our beloved Bishop Mead and went to his post of duty without murmuring or complaining.

We have had some sweeping revival meetings in this district this year; from some of which great results have been had; more than 150 conversions and many additions to the church.

We have held one Pastors' council, one District Conference and World Service Council, W. F. M. and W. H. M. s. convention, and one Sunday School and Epworth League Convention Institute. All of which were largely attended and much interest manifested.

All of the benevolences have been carefully looked after, just how well we have done our work along these lines, each pastor's report will show.

We have held and caused to be held, 56 quarterly conferences in the district this year, beginning at Eagle Lake with Rev. D. L. Mosby, we found him on the job.

Thence to Columbus, Brother George Waters has brought things to pass. The new St. Paul, which has long been a dream is now a reality. The church has been completely renovated.

Columbus Circuit, Rev. D. F. Vance, pastor, is a steady leader and good work has been done at that place.

Garwood Circuit. I believe, Bishop, that if Brother Bryant is returned to this place, in the near future we will have a worthwhile membership and a meeting house. Brother Bryant is a safe leader.

Schulenburg, Rev. A. M. Mason, pastor, is as ever, the same, and will make a splendid report all around.

Hallettsville, Rev. G. M. Mallory. This never failing pastor has things well in hands. Big things have been done under his leadership.

Oakland Circuit. Rev. J. N. Hooey has built a splendid six room parsonage at this place. His people are proud of him.

Yoakum and Shiner. Rev. J. H. Swann, the old reliable has done real effective work at this place and will make a good report.

Sublime. Rev. W. M. Mosely has built a neat parsonage at this place and will make a good report along all lines.

Wharton and El Campo. Rev. J. H. Marshall. Things looked a bit dark for Brother Marshall at the beginning of the year, but he, being faithful, worked hard until the darkness dispersed and now for him the light is shining. His report will show the work done.

Edna Circuit. Rev. J. T. Carper. His report will show that a pastor has been on the job and work has been done.

Calogne Circuit. Rev. Allen M. Harris will report this work in fairly good shape. He has striven hard to bring things to pass.

Weimar Circuit.—When we came to the district, this meeting house was closed but in a few weeks we succeeded in getting it back into our possession. Brother A. C. Holden will report some work done at this place.

Victoria. Rev. S. D. Mosely has worked hard this year to keep things a going, his report will show that he has succeeded in a wonderful way.

Bishop, we have pushed all causes of the church in every charge and stood hard by the pastors in their work. We have shared with them, the hardships and pleasures of the work of the Victoria District.

All of this we prayerfully submit,

W. M. ELLISON.

THE WACO DISTRICT

“Let the words of my mouth and the meditation of my heart, be acceptable in thy sight, Oh Lord! my strength and my redeemer.”

Dear Bishop and Brethren of the West Texas Annual Conference, representatives of the General Church, ladies and gentlemen:

It is with joy inexpressible and heartfelt gratitude to Almighty God, that I am permitted to make my third Annual report of the Waco District.

These have been very hard years, both on body and mind, notwithstanding we are happy to say, but out of all the Lord has brought us by His power.

We have come up from our humbl efields of labor, bringing some of the sheaves with us. We began our work right after the adjournment of the An-

nual Conference at Victoria, with Rev. H. A. Jones at Rocky Circuit. This is Brother Jones's fourth year with these good people, he will report a splendid year's work. An increase over last year.

Groesbeck Circuit. The Rev. W. B. Lott, pastor. This is Brother Lott's second year. Groesbeck and Mexia is a fine field indeed, flooded with oil and gas and plenty souls to be harnessed up for the Master's Kingdom. He will report his work.

Mart Circuit. Rev. M. B. Burkley, pastor. This is Brother Burkley's second year. His report will show an increase over last year.

Marlin Circuit. Rev. J. G. Brown, pastor. This is Brother Brown's first year. Bishop, Marlin is coming back to its own again, and it looks as though in a short while we will build a new church house; the outlook is bright. Brother Brown has things going his way.

Bowman Circuit. Rev. John Coe, pastor. This is Brother Coe's fourth year. He and his good people have wrought a good work, and increased along many lines. He will report his work.

Satin and Majors. Rev. I. T. Sandford, pastor. This is Brother Sandford's fourth year. They have made some needy repairs on church. He will report a very good year's work.

Chilton Circuit. Rev. F. D. Young, pastor. This is Brother Young's first year with these good people, he will show an increase in the work over last year. He is a splendid young man and will report a good year's work.

Mayfield Circuit. Rev. Esau Smith, pastor. This is Brother Smith's second year at this place. His people love him, his work will show an increase over last year, he too, will report a good year's work.

Calvert. Rev. A. D. Holden, pastor. This is Brother Holden's third year. He is a splendid preacher and workman. He has put up a very good year's work, and increased over last year. He will report his work.

Lott Circuit. Rev. G. M. Moten, pastor. This is Brother Moten's second year at this place; quite a few of our people have moved away from this place. He and his people are moving along nicely. He will report a fair year's work.

Waco, Mt. Zion. Rev. B. A. Byars, pastor. This is Brother Byars' third year with these people. He has wrought well; paid some on an old outstanding debt, of which we hope in some way may be looked after. He will report a very good year's work.

Waco, Jones Chapel. Rev. S. Graham, pastor. This is Brother Graham's first year at this place. His people love him and is putting over a splendid year's work. Some very needy repair work has been done. He will report his work. ----

Waco Circuit. Rev. E. Davis, pastor. This is Brother Davis' first year at this place. He is a supply, but he has moved the church house and added on eight feet more, gracing it with a modern front, adding paper and paint which make it very neat and cozy, and all paid for. He will make a good report.

Waco, St. James. Rev. C. S. Williams, pastor. This is Brother Williams' fourth year at St. James, the pride of North Texas. This good man is a mas-

ter church builder, and is loved by all his people and friends. He is laboring under a very heavy load, yet he goes forward. He will report a splendid year's work.

Cameron. Rev. S. Keesee, pastor. Brother Keesee has been pastor at this place for only three months. He is proving himself master of the situation. He will report his work. He and his good people are getting together.

Bremond Circuit. Rev. G. F. Alexander, pastor. This is Brother Alexander's first year on this circuit. He has wrought well. The people love this good man, and they are willing to follow him. He will report his work.

Kosse Circuit. Rev. H. L. Palmer, pastor. This is Brother Palmer's second year on this circuit. Bishop, I am happy to say: this good man is a real pastor. Part of this circuit is a little mission point. He doubled the membership this year, raised his full quota of World Service money; bought a half-acre of land for a church lot and paid for it. He will report his work.

Aquilla Circuit. Rev. H. E. Kuykendall, pastor. This is Brother Kuykendall's second year. These good people have just about cleared up an old debt that caused a lot of trouble. This pastor and people are working together, we have worked our way into West Station, and it seems as though we will be able to build a church house in the near future. He will report his work.

Lorena Circuit. Rev. H. G. Gray, pastor. Brother Gray is a supply, and this is a Mission point. We are trying to get a foot hold at Lorena. Brother Gray raised his full quota for World Service. He will report his work.

Final Word

I wish to say as a final word: Bishop, we have done our best, conditions have been very hard, but we have marched steadily onward without complaining. I have endeavored to keep the program of the old church ever before, my people. We are trying to keep Samuel Huston College from trailing in the dust.

Our District Conference and Group Meetings proved to be very helpful. Our convention and Institute proved to be a master-piece of workmanship.

Good revivals all over the district, many souls have been saved and brought in the church.

Faithfully,

J. W. DOWNS, District Superintendent

BISHOP JONES

Truly for the past eight years, these have been days of evolution, when God has led us on by His council and unfaltering hand. Things don't always continue, but for us, these recent eight years have been rather steadfast and we have felt unmoved amidst the busy whirl of things. It is all because we have had the matchless and stalwart leadership of Bishop R. E. Jones, who knows no failure and whose courage is never daunted.

In this the 53d session of the West Texas Conference, we find ourselves the happy associates of the Rt. Rev. R. E. Jones, as presiding Bishop as well as the resident Bishop of this New Orleans Area.

We have rejoiced in his re-assignment to this area and we rather feel that that this is none other except the hand of God who has held steady the old ship for these years, under his wise and helpful leadership.

And since he has been called to the office of a Bishop in this great church and it has been our good fortune to have had him assigned to this area and to the Presidency of our conference at this time, we rejoice again because of this fellowship.

He has given himself so completely and so unreservedly to the work of the church and has won for himself favor both with God and the men with whom he has labored. We believe God is leading him on his strides for Kingdom building and his conquest of this world for Jesus Christ, and we thus brought to this new day, when men of our race and kin are able to shoulder the great responsibilities of the church, which means a brighter day for the Kingdom and for the advancement of our group.

And since in the wisdom of the Board of Bishops he has been assigned to the Presidency of this particular session of this conference, we despeak with loud praises the success of this conference for having this distinguished leader, who has not been disobedient to the heavenly vision in answering the call of the great church and in the language of Isaiah has said: "Here am I send me."

Now, because we are so profoundly impressed with his leadership and that manliness which has characterized his every footstep and act as a bishop in the church,

Resolved, That we as a conference, tender him a rising vote of thanks for his painstaking interest in the work of the conference and that we extend to him at this time, our sincere appreciation for work among us during the recent quadrennium and invite him to be among us whenever it is practicable and that our prayers shall be "The safe-keeping of him and his dear family."

Resolved further, That we do hereby petition the coming General Conference which meets May 1, 1928, in Kansas City, Missouri, to return him or re-assign him to this area for another quadrennium, in order that he may complete in the finest way possible, the work that has so well gone forward under his leadership.

Signed:

K. W. McMILLAN,
J. H. CHILDS,
J. J. HARDEMON,
J. L. S. EDMONDSON,
J. W. DOWNS,
S. E. BLACKNELL,
WM. ELLISON.

RELIGIOUS EDUCATION

Whereas, the religious motives in education are realized through the effective use of educational methods in religion, and

Whereas, the exaltation of the teaching ministry is fundamental to the intelligent and loyal membership, instructed in the scriptures and trained in advanced church methods;

Resolved, That we correlate the religious educational forces of the conference by approving (1) a uniform program for all institutes, (2) that the council of religious education appoint a suitable person to confer with District Superintendents and fix such dates as will be most suited for each institute. (3) that we approve the appointment of a conference Dean of institutes subject to the approval of the Board of Education.

Signed:

R. N. BROOKS,

T. B. ECHOLS.

EPWORTH LEAGUE

Whereas, the Epworth League is doing a great and good work, serving as it were, as a hot bed for the church, from which young life is being transplanted into the church, thereby recruiting our ranks for the task of Kingdom building,

Be it Resolved, That we immortalize our conference by giving to this indispensable auxiliary our unstinted support.

Signed:

J. W. STONE, JR.,

F. D. YOUNG.

HOSPITALS AND HOMES

Whereas, the church has awakened to the sense of connectional interest among all men and is in sympathy with the fortunes and destinies of men everywhere, and since the church appreciates its relation to the human families of the earth, and because men are suffering and women are dying from disease and misery that must be met only as the church, in the spirit of Christ, can meet.

Resolved, That we stand by, in a whole hearted way, the connectional interest of the hospitals and homes of the church that is being carried on by the Board of Hospitals and Homes.

Resolved, further, That we encourage our youth to larger service by taking the course in Nurse Training so that they may be fitted to serve in a larger way those who may suffer and can be relieved by Christian service.

Signed:

S. N. HARVEY,

C. W. FRANKLIN.

PROHIBITION-PUBLIC MORALS

Whereas, strong drink in any form is destructive to life and character, and since Prohibition is doing so much for church and state and home to stamp out this evil of drink,

Resolved, That we renew our pledge to fight against this great curse to the last ounce of our energy.

Signed:

GEORGE WATERS,
J. W. STONE.

DEACONESS

With the ministry of service to the sick and helpless, the Deaconess Board is doing work akin to that of the Red Cross, and other organizations.

Be it Resolved, That we give it our unstinted support, that we request the board to place workers in the bounds of our conference where their service is so much needed.

Signed:

F. J. HUTCHINSON,
J. F. MUSE.

EPISCOPAL FUNDS

Whereas, the M. E. Church with her world program has greatly encouraged its constituency to live a greater life of usefulness, to both church and state and better prepare themselves for any duties that may be thrust upon them by electing two of their own group to the Episcopacy in the person of Bishop R. E. Jones and Bishop M. W. Clair,

Be it Resolved, That we will support its cause in every home that is touched by its influence.

Signed:

J. S. MEDLOCK,
JOHN COE.

ACCOUNTS OF L. H. RICHARDSON

We, your committee on L. H. Richardson as to the conference claimant account for the year 1925, of the West Texas Conference, find after due investigation that all money on this account was paid to the claimants of the conference. We therefore recommend that this conference release L. H. Richardson from all responsibility of the same.

Signed:

J. W. WARREN,
T. H. WYATT,
G. A. DESLANDES.

We reported \$100.00 for general fund; paid nothing for salaries, paid nothing for conference salaries; paid \$2.41 for lenten offerings; paid nothing for permanent missionary; paid nothing for Deaconess; paid nothing for Soldiers and Sailors; paid nothing for building and equipment. Thirty-six Deaconesses were assisted last year, and two nurses employed.

Received for support and relief, \$15,274.18. Disbursed for support and relief, \$11,579.71. Not one cent of the above amount paid directly by West Texas Conference auxiliary.

The mite box report showed that Oklahoma paid \$1,073.30; West Virginia paid \$2,188.30; Little Rock Conference paid \$369.35; West Texas Conference, \$5.19.

Therefore resolved, That it is high time that the West Texas Conference auxiliary enthuse more interest in district and local auxiliaries to a greater sense of their obligations.

Resolved, further, That we as a conference pledge to this organization our hearty support in whatever way we can render it, to righten these poor financial conditions.

In the words of Mrs. Collins L. Brock, let us go with spirit filled from this mount of inspiration to radiate the spirit of our Master as mothers in the home, as workers in the local church, as Christian citizens in the community, as patriots loyally supporting the constitution of our country and as world citizens using our resources to bring unto the hearts and lives of all mankind the Kingdom of Heaven.

Signed:

P. H. JENKINS.

SABBATH OBSERVANCE

One writer has said with reference to the Sabbath: "How beautiful to Noah when he escaped from the waters of the Deluge. How beautiful to his posterity. How beautiful to us is the bow of the Covenant flashing on the bosom of the impending cloud and telling us that God has not forgotten the world and will no more overwhelm it with waters of flood; How beautiful, yea, how unspeakably more beautiful is the rainbow of the Sabbath round about the throne of a Nation, encircling its constitution, its hours; its lifeties; the sign that God has a covenant with that people—the national sign that the people have a covenant with their God; therefore, let us as fellow-Christians keep that day Holy which God has reserved and hallowed to Himself and urge that others do not desecrate it.

Signed:

H. O. McCUTCHIN.

W. F. M. SOCIETY

"And Jesus came and spake unto them saying: "All power is given unto me in heaven and in earth. Go ye, therefore into all the world and teach all

nations, baptizing them in the name of the Father and of the Son and of the Holy Ghost; teaching them to observe all things whatsoever I have commanded you; and lo I am with you alway, even unto the end of the world."

Since the field for the work of the W. F. M. Society is abroad, Europe, Asia, Africa, Australia and the Isles of the sea, and

Whereas, this organization is not known in many of our charges and circuits and since there are six million unchurched women, men and children in our home parish and seventy-five million in our parish abroad, and

Whereas, there are approximately two million girls who are members of the Methodist Episcopal church who are responsible for the salvation of eighty-one million of unreached women and girls at home and abroad, and

Since the few women of the Women Foreign Missionary Society are struggling with a problem that rightly belongs to all the two million Christian women in our church, and

Whereas, Mohamedanism is a stagnant religion and is rapidly taking Northern Africa,

Therefore, be it Resolved, That we the pastors do now pledge ourselves to this conference and both the Foreign Missionary Board and the W. F. M. Society that we will become more active in fostering this cause in our respective charges and circuits in order that the W. H. M. Society (sister institution to the W. F. M. Society) become more active in fostering the claims of the W. F. M. Society.

Resolved, further, That each church school in the conference observe a Missionary Sunday each month by celebrating appropriate programs and that collections be taken for this cause.

Signed:

P. H. JENKINS,
D. F. VANCE.

W. H. M. SOCIETY

God's providence having liberated more than four million of people of African descent who were without organized Christian influences to mold their individual characters into intelligent citizens which was essential to their permanency as an intelligent race whose freedom must prove a blessing to humanity and to civilization the world over, stirred to greater usefulness the hearts and minds of Mrs Dr. (later) Bishop Hartzell, Bishop Wiley and Dr. A. B. Leonard, Mrs. J. L. Whetstone, and Dr. and Mrs. R. S. Rust, whose united effort, July 6, 1880 in Trinity M. E. Church, Cincinnati, Ohio, gave birth to the W. H. M. Society of the Methodist Episcopal Church.

The object of this society was twofold; (First) to enlist and organize the efforts of Christian women in behalf of the needy and the destitute in all sections of our country.

(Second) to co-operate with other societies and agencies of the church in educational, missionary and deaconess work. Forty-seven years of hard toil have given to this society these assets: Cash, \$223,421.19; Investments, \$888,-

549,92; Buildings, \$5,571,785.00; Deaconess Institutions, \$889,903.20. Making a grand total of \$7,573,650.36.

Self help in Texas has not compared favorably with our resources and that of other Southern states. We for some cause and not awake to our responsibilities. The general minutes of the forty-fifth annual session of the W. H. M. Society will show that our West Texas Conference Auxiliary 1925-26 as published.

CONFERENCE BOARD OF CHURCH SCHOOLS AND EPWORTH LEAGUES

This is a day when large emphasis is being placed upon the religious training of youth. If the church is to hold its grip on the world, it must do so by enlisting in its ranks the youth of the world. "What you would have in the life of the nation, you must first put into your system of education." The church must have agencies through which it hopes to enlist young life.

The Methodist Episcopal Church has its agencies, namely: its Church Schools and Epworth Leagues.

We are proud of the work that our Church Schools and Epworth Leagues are doing throughout Methodism.

As a conference, we have also made some progress, but judging from the statistical reports of last year, the results are not as gratifying as one might hope them to be. A study of the statistics of last year's minutes reveal the following facts: There are 13,552 full and preparatory members on the rolls of the various churches of the West Texas Conference. There are only 7,180 members on our Sunday School rolls, with an average attendance of 3,833. The membership of the schools should equal or exceed that of the adults. If we are to make progress, the youth of the West Texas Conference must be enlisted in Sunday School work.

Again, there are 93 senior and 73 junior chapters of the Epworth League in our conference. Or, a total of 166 senior and junior chapters of the Epworth League in the whole conference. The total number of senior and juniors of the League is ten less than the total number of Sunday schools. There are 103 charges in our conference. In ten of these charges there is no league at all. In thirty of these charges there is no junior league. In these 166 chapters we have a total membership of 2038, or about one-third as many members as we have on our Sunday School rolls. The Leagues are the departments of the church where the young people learn to actually practice religion. May these facts stir us to greater League activity.

The West Texas Conference leads the other nineteen colored conferences of our Methodism in the matter of institutes and training conferences. The results of the year's work along this line are quite gratifying.

We therefore heartily recommend this fine type of Summer training Conferences and Institutes be continued.

Secondly, we urge upon the president and trustees of Sam Houston College

to maintain and even strengthen its department of religious education. "For whatever may be conceded to the influence of refined education on minds national morality can prevail in exclusion of religious principle."

We further recommend that our conference take the necessary steps to secure a conference Director of Religious Education to do field work. We feel that since other conferences are doing so, we should strengthen our conference by doing the same.

Finally we recommend, that Vacation Bible Schools be conducted throughout the conference. That we observe Sunday School Rally Day. And that each Church School take an offering annually for the general board.

Brethren, let us strive to make this the greatest year in the history of the Department.

Signed:

C. E. WHITIKER.

RESOLUTION MEN'S COUNCIL

We feel led to urge upon our constituents and upon the nation at large the importance of the faithful enforcement of all laws, local, state and national and that our people give their hearty support to all officials so engaged.

We affirm our approval of the statement made by Bishop Nicholson, President of the Anti-Saloon League of America, in his recent address before the National Convention of that organization, in which he said:—

"The Prohibition legislation enacted step by step, by local option and then by overwhelming vote of the people, is the most thorough piece of conformity to the American ideal of liberty in the history of the Republic."

We believe that the orderly and the constitutional processes by which National Prohibition has been achieved were representatives of the judgment and desire the great majority of the American people.

Now in order to hold and keep to the fore the galaxy of individuals who would be of great power in helping on this work of the church and the country.

Resolved, that we, as a Conference, organize A Conference Men's Council, with president, vice president, secretary, etc., whose work shall be as such as shall be suggested from time to time by the Board of Sunday Schools and such as will naturally arise in our minds as men fostering a movement so vast in importance and work as the Men's Council.

Resolved, that we, also organize District Councils and that there be organized and maintained in each Local Charge, a Men's Council, that shall work in a civic way to the end above designated and prescribed.

Resolved, further, that there shall be held annually a Conference-wide meeting of the men, and that district meetings shall also be held in the district of the conference for the inspiration and uplift of the men of the conference, both laymen and ministerial rank.

Resolved, that we heartily endorse the movement and that we shall urge

upon our men to attend in large numbers and that each local organization send at least one representative to this coming annual conference.

Signed:

K. W. McMILLAN.

CONFERENCE JOURNAL

Since there has been so much delay in the publishing of our annual conference journal in recent years, and thereby making it exceedingly hard to collect funds to pay for the same, and because we are desirous of having an early minute, and since the method used last year in handling the publication of the minute, was entirely satisfactory

We recommend that we use the same method.—A publishing board be appointed and that this board be authorized to borrow the amount for publishing the minutes from some bank and that 1200 be published and distributed as follows among the districts and the same when published be shipped C. O. D. to the District Superintendents.

Austin District.....	150 copies	\$ 37.50
Corpus Christi District.....	50 copies	12.50
Dallas District.....	250 copies	62.50
San Angelo District.....	150 copies	37.50
San Antonio District.....	225 copies	57.25
Victoria District.....	175 copies	43.75
Waco District.....	200 copies	50.00
	<hr/>	
	1200 copies	\$300.00

Signed:

K. W. McMILLAN,
C. W. FRANKLIN,
W. M. ELLISON,
J. H. CHILDS,

Publishing Board.

STATE OF CHURCH

We look with considerable concern upon certain attitudes and practices in the church which greatly rob Christianity of much of its vitality and winsomeness. Admitted evils growing out of superiority complex are sure to greatly retard the whole missionary effort and program. The treatment of the colored race constitutes a direct challenge to the teachings and ethics of Jesus. Resolved that we do not recognize as valid any discrimination on account of race or color and that we use every opportunity to remind the church of her obligation to the end that she may ceaselessly work to maintain in every land, a genuine brotherhood based on the fatherhood of God.

Resolved, further, that we repudiate as un-Christian and untrue the idea that certain races are born to inherent and fixed superiority and rulership. While we note with gratitude their decreasing frequency, we nevertheless record our deep sense of humiliation before God and man, that the lynchings of Negroes under whatsoever provocation, could take place in a Christian country. We deplore as unpatriotic and un-Christian, movements, policies and programs, calculated to humiliate our group in any manner whatsoever.

We express our regrets that the feeble efforts to shepherd our people who migrate from southern cities and plantations to northern centers meet with so little success. While a mere handful of the transient group finds its way into our Methodist Churches in the north, we are actually losing thousands of members annually as a result of an inefficient method, if not in entire lack of method. We call upon the fishers of men to cast the net on the right side, for only a new cast of the old net can save the situation. We rejoice in the efforts which the church makes to educate the membership and constituency. The church bulletins, church news, every member canvass, advocates and Christian colleges have all joined in a great educational awakening. Returned missionaries have brought graphic pictures of the distressing situation in the foreign fields, and yet we dabble in the shallows while deep waters of discipleship stretch out before us.

We recommend that our pastors everywhere give all diligence to conserve our membership by observing carefully the rules and directions of the book of Discipline relative to the transfer of membership from one local church to another. We recommend (2) that we importunately urge our pastors to renewed interest in the program of the church in an effort to overcome the effects of the slump in World Service.

We recommend that the men of the West Texas Conference dedicate themselves anew to the task of ushering in a better day for the church.

Signed:

R. N. BROOKS.

ON SUNDAY SCHOOL

Much of the current objection to the use of some parts of the Bible in Christian education, would be obviated if the thoughts of the pupils were centered on the main point of the writer's mind.

For many years the church school world, has held the opinion, that the teachings of the Old and New Testament, should be a part of the curriculum for the Christian nurture of our young life.

We have felt that this judgment is justified by the high interest shown by boys and girls of all ages. But the church through its Christian education, is trying to raise the church school above the seven deadly sins that hinder the spiritual, intellectual, financial, and even numerical progress of the church school. The seven deadly sins are as follows:

- (1) The lack of right aim.

(2) Looking upon one's election to the superintendency, as though it was an election to the Episcopacy.

(3) Hand to mouth plans and methods.

(4) Maintaining a low standard of hymns, and other music in the Sunday service.

(5) Poor management, such as lack of promptness, low average in attendance, and non-effective class work.

(6) By taking too much time from the study of the lesson, starting too late, lengthy announcements, singing too many songs, and even by holding unnecessary closing exercises.

(7) Sunday School Superintendent's failure to secure a training for his or her position.

And since Samuel Huston College, at Austin, Texas, and Gulf Side school, at Waveland, Miss., offers an opportunity, open wide their doors to Sunday school workers, Be it resolved, that as pastors and District Superintendents, urge, persuade, and teach our church school officers and workers, to strive to use from these two schools, all of the advantages given in them.

Be it further resolved, that the West Texas Conference go down on record, as supporting these schools to this end.

Earnestly submitted,

T. B. ECHOLS,

R. A. APPLING.

COMPLIMENTARY RESOLUTIONS

Your committee on Complimentary Resolutions takes pleasure in reporting on behalf of the Annual Conference, its appreciation of the manifold services which have been devoted to prove and maintain its effectiveness and comfort during the week of its session. The committee on Entertainment has been instant in its response to every claim, and to them, we acknowledge our gratitude.

The citizens and civic organizations, by whose hospitality we have been greatly helped, have used every available effort to make our stay pleasant and to advance our conference affairs by their eager co-operation in securing our convenience. To the ushers, pages and other helpers, who in practical capacities, have performed those innumerable and unrewarded services, which have so greatly facilitated our labors, we present our real appreciation. For the splendid contribution of the choir. They have both led us in devotional song and furnished splendid entertainment, to them we confess our happy debt. We shall long remember their lofty musical strains, cheering our hearts with their hymns of praise.

To the visitors who have cheered us with their splendid messages and strengthened us by their fellowship and service. To the press for the accuracy with which the sessions have been reported, and for the splendid form in which the report appeared from day to day. They deserve more praise than this brief

acknowledgement can possibly express. We trust that they may be able to read beneath this slight recognition, an appreciation much greater than the phrases through which it is expressed.

To Doctor and Mrs. Warren, for the innumerable personal courtesies, not alone to officials and members of the Conference but to visitors as well. We owe and acknowledge a singular obligation, often unseen by the crowds, and unsuspected by many of us, they have ministered in unnumbered ways to our comfort and well being. We thank Bishop Jones for the fidelity with which, in every circumstance, he has given himself to serve the conference and to safeguard the interest of every cause committed to his charge. For the inspiration of his messages which focused our thought upon our specific duties here; for his council during these days; for his co-operation in such ways as have been proper to his high office. We express again our loyalty to him and our keen appreciation of his helpful administration of the affairs of the area. Tomorrow, we who have been together here in fellowship and labor, shall be widely separated, with our fellowship a memory, and our labor directed in quite other and perhaps, less pleasant enterprises. But because of our association in this Annual Conference and the recollections which shall be so richly ours, we shall take more constant and impregnable joy in the knowledge that, in every place and at every occupation, we are companions of all them that serve God.

Signed:

A. D. JACQUES,

R. N. BROOKS.

OVATION DAY

Since the other conferences have set apart and designated April 18, as Ovation, wherein we may close our work for the fiscal year just before the opening of the General Conference and there is determined effort on that day to roll up every dollar of our World Service askings, and since we are deeply interested and concerned about the rating of our Area, we join in this acclaim, and resolve to stress World Service giving above all other interest and that April 18, about the gathering time of our district conferences and World Service Council make effort make this the banner year in our World Service givings.

And too, on this set apart in some way special honor to our chieftain, Bishop R. E. Jones, and acclaim him the rightful leader of our group of the great church.

Signed:

K. W. McMILLAN.

SUMMER SCHOOLS

WHEREAS, the Methodist Episcopal Church, coveting an educated ministry, requires a candidate to pursue a prescribed course of study extending over

a period of four years, with admission into the ministry, almost entirely dependent upon the general character of the examination; and

WHEREAS, preparation of questions and grading of examination papers by a central board of skilled examiners would incite increased studiousness on the part of our under-graduates, harvest a richer intellectual fruition and make for a uniform advanced standard, which would be prized, we trust, throughout the area, be it

RESOLVED, that we hereby request the Waveland Summer School of Theology to begin the performance of this needed service for our own West Texas Conference, by preparing the questions for our local examination.

RESOLVED FURTHER, that the Board of Examiners be requested to select persons from its number specially suited for the matter of grading and evaluating papers.

No work in the area deserves more the whole hearter support of the several conferences than that of the Summer Schools, which are striving so earnestly to prepare an efficient leadership for these conferences. We therefore recommend (1) the continuance of the Waveland Summer School of Theology and religious education. (2) That we adhere strictly to the action of the conference on yesterday, in creating a fund for the partial maintenance of our students, while in attendance at these schools. (3) That we register our approval of the area promotion of summer schools during this quadrenium and encourage all to look forward to a future bright with possibilities for our Summer School work at Waveland.

Signed:

A. D. JACQUES,

T. B. ECHOLS,

R. N. BROOKS.

WEST TEXAS CONFERENCE COUNCIL OF RELIGIOUS EDUCATION

It is our belief that there should be a Conference Council of Religious Education. The purpose of this council would be to direct the training conferences and institutes of the conference, to provide as far as possible, a unified program for the various institutes, to help in selection of faculties and arrange the time of meeting of each district institute in order to avoid conflict. This council should co-operate also with the local churches in seeing that an Epworth League Chapter is well established in every charge and the church school organized and graded according to its needs.

This council should also promote daily vacation Bible schools and whatever other agencies necessary for the religious nurture of the young life of West Texas. Therefore,

BE IT RESOLVED, that we endorse the creation of such a council to be composed of District Superintendents, Deans of Institutes, Life Work Secretaries, Directors of Religious Education, District Officers of Epworth League

and Church School and any other ministers and laymen as may be selected by the council,

BE IT FURTHER RESOLVED, that we shall request the Texas conferences to unite with us in the formation of a State Council of Religious Education.

Signed:

T. B. ECHOLS,
J. B. PHOENIX.

Committee.

SUMMER SCHOOL OF RELIGIOUS EDUCATION

WHEREAS, the people of Texas are beginning to realize that unless they become aroused to the need of religious instruction for their children, they shall not get very far. The religious motive in education cannot be realized in the absence of an effective use of educational methods in religion. We know that some type of religious educational program is essential to good citizenship, to preparation for vocations and avocations, to the exalting of the teaching ministry of the church, and in providing for the church an intelligent and loyal membership instructed in the Bible and trained in Christian living.

WHEREAS, a school of religious education would serve a twofold purpose: (First) It would provide a place of study and training for our district officers, district faculties, pastors, and young people in religious education, who cannot go to distant schools. This would make our college a religious as well as an educational center for our conference and supply leadership for a number of large city churches and rural communities, which are much in need of trained church school workers. (Second) It would serve as a training school for religious leaders of other denominations of Texas and West Texas.

WHEREAS, Ministers and laymen, boys and girls will welcome the coming of our Summer school of Religious Education since our General Church Officers and prominent scholars, who cannot visit our many district institutes, can be obtained for this special school, where all the interests of our conference would be pooled. Therefore,

BE IT RESOLVED, that we, members of the West Texas Conference, petition the Department of Epworth League and the Department of Church Schools to conduct at Samuel Huston College, a Summer School of Religious Education.

Signed:

T. B. ECHOLS,
A. D. HOLDEN.

AMERICAN BIBLE SOCIETY

Since in the wisdom and inspiration of the Prophets of the Old Testament and in the love and sacrifices of both our Lord and the Apostles of the New Testament, and because we know the Bible as the only sacred history of all events, and since the slogan of this organization is: "A Bible in Every Home,"

Resolved, that we set a new standard on each district and that each local charge stand by the slogan to support the work of this society.

Signed:

J. E. BROWN, Chairman,
J. L. WATLEY, Secretary.

**SUMMARY OF FINANCIAL EFFORT WITHIN THE CONFERENCE FOR
SAMUEL HUSTON COLLEGE FOR THE CONFERENCE YEAR
DECEMBER 8, 1926 TO DECEMBER 3, 1927**

Conference collections prior to meeting of conference.....	\$1,285.77
From conference treasurer at conference.....	346.00
Collected from pastors at Conference.....	217.78
Collection Samuel Huston Night.....	90.00
School Rally	1,099.65
Library equipment Committee.....	500.00
Board of Trustees.....	300.00
Athletic Park.....	1,450.00
TOTAL	\$5,289.20

**OUTSTANDING INDEBTEDNESS SAMUEL HUSTON COLLEGE,
DECEMBER 1, 1927**

Accumulated Deficit, December 1, 1927.....	\$ 7,575.61
Remodeling offices, Music house and Library.....	1,800.00
Balance on Library equipment.....	125.00
Construction of Athletic park.....	5,500.00
TOTAL	\$15,000.61

Signed:

T. R. DAVIS, President.

**RESOLUTIONS ADOPTED AND PRESENTED BY THE BOARD OF TRUS-
TEES AT THE SPECIAL SESSION ON SAMUEL HUSTON COLLEGE**

RESOLVED: That the Board of Trustees of Samuel Huston College present to the West Texas Conference the necessity of liquidating the present debt of the College arising out of the recent expansion and amounting to \$15,000.00 and that the conference be requested to raise this year \$6,000, all amounts to be remitted to the president of the College and by him forwarded to the Board of Education and used as operating income for the College, any surplus remaining over from the operation of any school year in excess of \$3,000 is to be paid to the Board of Trustees and by them applied on the contract with the Kuntz-Sternenberg Lumber Company.

Signed:

A. D. JACQUES, Chairman
C. R. YERWOOD, Secretary.

**RESOLUTION ON SAM HUSTON COLLEGE BY THE WEST TEXAS
ANNUAL CONFERENCE**

It is a matter of great rejoicing for all of us that Samuel Huston College is now having the greatest success in all its history. There are 322 students in the Institution, of which 273 are in the college courses and 49 are in the Senior High School. The Institution is doing only College and High School work, so that in its academic courses it is in advance of any school in the State. The institution is rated as an "A Class" four-year standard college by the State Department of Education of Texas. The property is valued at \$300,00.00. At no time in the history of the school has the West Texas Conference and constituency a greater reason to be proud of its position, nor more zealous and loyal in its support.

The remedy for clearing the burden of the Conference. The school will end this school year, however greatly reduced, (and none of its high peaks of progress endangered. Therefore Resolved:

(1) That the West Texas Conference hereby agree to raise \$6,000.00 for Samuel Huston College to supplement appropriation of the Board of Education, and that the same be divided among the districts as follows:

Corpus Christi District.....	\$ 300.00
Austin District.....	1,000.00
Dallas District	1,200.00
San Angelo District.....	700.00
San Antonio District.....	1,200.00
Victoria District	700.00
Waco District	900.00
TOTAL	\$6,000.00

(2) That it is understood and agreed that the amounts to each district has been apportioned to the charges and is an annual conference benevolence ordered by the annual conference, and is to be reported in column seven of the pastor's report to the treasurer of the conference.

(3) That the conference agree to set aside Lincoln's birthday, Sunday, Feb. 12, as Samuel Huston College day throughout the conference, at which time every charge in the conference will put forth effort to raise 100 per cent of its quota, and send the same to the president, T. R. Davis, Samuel Huston College, Austin, Texas, and a voucher to be sent by him for the same.

(4) It is understood that all subscriptions be turned over to the pastors where members of churches have subscribed, and that the pastors aid in the collection of the subscriptions and sent to President Davis, which may also be credited to their churches and vouchers given them and reported in column seven of the Treasurer's Report.

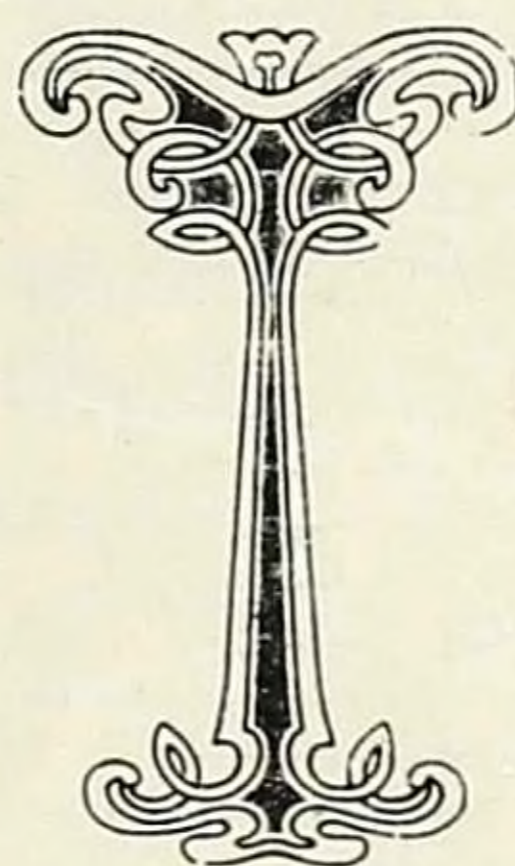
(5) In as much as this money is needed for the current school year, that

the pastors pledge to raise as much of the apportionment as possible and send it to the President, between now and March 1.

(6) It is also agreed that the Samuel Huston rallies at District Conferences and in Sunday School and Epworth League gatherings be restored and made a part of these annual meetings. Also that the District Superintendents in their report at the Annual Conference and the pastors in their reports to charges to be requested to report what has been raised during the Conference year for Samuel Huston along with their reports for other causes.

Respectfully submitted,

A. D. JACQUES.



**FINANCIAL AND STATISTICAL REPORT—BOARD OF STEWARDS—WEST
TEXAS ANNUAL CONFERENCE—ENDING NOV. 30TH—DEC. 4, 1927.**

Receipts

For Annuity Distribution.....	\$1,011.00
Chartered Fund Dividend.....	40.00
Paid by Churches.....	826.49
Income from Conference Investment.....	176.00
Board of Pensions and Relief Dividend.....	600.00
TOTAL	\$2,654.08

Disbursements:

To Preachers.....	\$1,002.75
To Widows.....	1,358.91
To Children.....	265.75
Overdraft.....	2.51
Reserved for Postage.....	1.49

Apportionment for the Next Year:

- (a)—Total number of years 964 multiplied by \$11; Annuity Claims \$10,604.00.
- (b)—Total Deductible Income, not including receipts from charges \$9,737.00.
- (c)—Amount required to meet Annuity Claims in full \$20,341.00.
- (d)—Amount recommended by Stewards for necessitous cases \$600.00. (Six hundred Dollars.)
- (e)—Amount fixed by Conference action this year for necessitous cases \$600.00.
- (f)—Total to be apportioned by the Board of Stewards item; (c) and (e) -----5 per cent of Ministerial support.

DISBURSEMENTS TO RETIRED MINISTERS:

NAME	Years	Annuity
Bown, A.	36	\$99.00
Coe, James	11	30.25
Coggswell, E. C.	20	55.00
Cooper, E. E.	12	33.00
Duncan, R. H.	22	60.00
Harvey, S. W.	36	99.00
Hutchinson, J. H.	28	77.00
Moore, T. S.	31	85.00
Pleasant, Geo.	5	12.75
Reed, W. M.	35	96.00
Wright, J. W.	16	16.44
Jordan, M. S.	30	82.00
Townsend, N. H.	31	85.00
Fountain, M.	24	66.00
Melton, C. B.	28	77.00
TOTAL	369	\$1,002.75

DISBURSEMENT TO WIDOWS—Years Served With Husband.

No.	Names	Years	Annuity
1	Buel, Matilda	6	\$16.50
2	Brawley, Annie.....	6	16.50
3	Brothers, Annie	6	16.50
4	Blackston, W. F.	12	33.00
5	Bennett, P. B.	25	68.75
6	Caviness, M. C.	3	8.25
7	Carper, A. L.	22	60.50
8	Dennie, R. H.	14	38.50
9	Dickerson, H.	10	27.50
10	Gates, P.	17	46.75
11	Henson, Mack	25	68.75
12	Holden, J. H.	16	44.00
13	Kirkpatrick, F. L.	16	44.00
14	Lynch, A. L.	1	2.75
15	Mitchell, W. J.	15	41.21
16	Mosby, W. H.	19	52.00

17	Oakman, J. A.	11	30.25
18	Shanklin, G. A.	10	27.50
19	Ponton, R. H.	24	66.00
20	Smith, I. S.	15	41.25
21	Sodia, R.	11	30.00
22	Townsend, G. W.	15	41.25
23	West Brooks, C. P.	13	33.75
24	Lacy, D. C.	27	74.25
25	Moony, W. M.	24	66.00
26	Pernell, W. H.	8	20.00
27	Smith, Moses	32	88.00
28	Swann, H.	10	27.50
29	Goff, B. J.	18	49.50
30	Humphrey, S. D.	7	19.75
31	Stevens, W. H.	15	41.25
32	Johnson, A.	19	52.25
33	Eusan, J. C.	22	60.00
	Strait, C. N.	4	11.00
TOTAL		498	\$1358.91

DISBURSEMENTS TO CHILDREN

1. Mother, Mrs. W. H. Mosby, one child, W. H. Mosby, Jr. Age 16 years—
10—annuity \$27.50.
 2. Mrs. Sodia, one child, age 14 years—8—\$22.00.
 3. Mrs. Susie Wyatt, one child, age 14 years—6—\$16.00.
 4. Mrs. D. C. Haily, child, age 10 years—4—\$11.00.
 5. Mrs. B. J. Goff, child, age 8—8—\$22.00.
 6. S. D. Humphrey, three children, age not given; service two years each—
\$16.50.
 7. Mrs. W. H. Pernell, three children, ages not given; service 5 years each—
\$41.25.
 8. Mrs. A. Johnson, three children, ages not given; service 8 each—annuity—
\$66.00.
 9. Mrs. J. C. Eusan, two children, ages not given; years service 7 each—
\$38.75.
 - 10 Mrs. C. N. Strait, one year each, ages not given—annuity—\$5.50.
- Total years on the basis of one-fourth years service, 94.

ANNUITY RATE:

(a)	Number effective members counted	76
(b)	Total salary paid	\$61,010.00
(c)	Average salary paid	\$610.00
(d)	Annuity rate	\$11.00
(e)	Annuity Rate Paid this year	\$2.75
(f)	Annuity rate paid last year	\$3.00

YEARS OF SERVICE.

(a)	Retired Ministers	369 years
(b)	Widows (three-fourths basis)	498 years
(c)	Children (one-fourth)	95 years
	Total last year	964

Signed:

T. H. WYATT, Chairman

R. M. DAVIS, Secretary.

3-3-3
7520
300

Statistician's Report

AUSTIN DISTRICT WEST TEXAS CONFERENCE, FOR 1927

21.50
19.25
40.75

7800

NAME OF CHARGES	NAMES OF PASTORS	MINISTERIAL SUPPORT											CHURCH MEMBERSHIP										
		Support of Pastor			Support of Dist. Supt.			Support of Bishops		Support of Conference Claimants		Total Paid for Ministerial Support	Total Deficiency	Baptisms		Prep. Mem.		Full Membership					
		Total Claim in House Rent	Total Paid in House Rent	Rental Value of Parsonage	Total Claim, in House and Traveling Expenses	Total Paid in House Rent and Traveling Exp.	House Rent and Traveling Expenses	Claim Paid	Claim Paid	Children Baptized	Adults Baptized			Prep. Members Received During the Year	Prep. Members Now on Roll	Received from P. M. or on Profession of Faith	Received by Transfer	Mems. on Roll, not incl. Non-res. Inactive Mem.	Non-Resident Inactive Members	Deaths During Year			
1 Simpson Tab	A. D. Jacques	1600	1500	300	150	138		25	10	65	25	1673	167	18	2	25	10	10	10	292	25	2	
2 Wesley Ch., Austin	T. H. Wyatt	2240	2140	260	364	315			10		58	2520	149	15	10	41	28	13		470	100	8	
3 Austin Circuit	Zan Holmes	200	70		80	30		5	1	5	1	102	98			3				62	19	0	
4 Cedar Creek	Shelley Harvey	350	350	50	100	100						350				5	16	2		108	22	2	
5 Fayetteville Cir.	P. M. Carmichael	120		120	140			10		20				2									
6 Georgetown Sta.	J. S. Medlock	1000	500	60	100	85		10	8	10	10	303	517	3	1	4	4	0	1	91		2	
7 La Grange Sta.	P. H. Phillips	731	492	80	100	88		12	5	12	12	597	267	1	2	3	1			100	20	6	
8 Hutto Ct.	E. V. McRae	600			76			10		20													
9 Giddings Circuit	Obie Coe	340	180	40	60	45		5	1	15	1	245	317						2	35		1	
10 Littig and Manor	J. W. Stone	450	180	110	188	80		4	1	20	1	228	208	4	1	1	1	2	1	40	15	5	
11 Lockhart Circuit	T. M. Bruton	850	397	120	144	144		10		20		251	613	3	2				2	133	12	2	
12 Luling Circuit	L. L. Haynes	1000	700		160	112		10	4	40	16	832	578	1	5	16				255	15	4	
13 Smithville Circuit	Marshall Majors	600	339	99	110	89		6	1	10	3	432	294	2		1	7			53	6	2	
14 Winchester Circuit	C. S. Schuler	600	340	120	130	117		6	4	25	10	471	285	3		4	4			119	4	1	
15 St. Marcus	G. W. Skelley	300	112	200	50	40		2	2	1	1	105	188			1	1			27		1	
	TOTALS	11981	7960	1545	1952	1383		115	67	253	253	7929	3671	53	23	104	76	32	18	1785	236	36	

Statistician's Report

AUSTIN DISTRICT, WEST TEXAS CONFERENCE, FOR 1927—Continued.

02989

NAME OF CHARGES	NAME OF PASTORS	SUNDAY SCHOOLS		LEAGUE EPWORTH			CHURCH PROPERTY										MISCELLANEOUS	
		No. of Sunday Schools	Officials and Teachers	All Depts. incl. C. R., H. Dept. Ofs. Schrs., Pupils	Average Attendance	Senior Members	Junior Members	Church Buildings	Estimated Value of Land and Buildings	Parsonages	Estimated Value of Land and Buildings	Value of other Property Endow'm't's, Bonds, Etc.	Paid for Building and Improvements	Paid on Old Indebtedness on Property.	Present Indebtedness on Property	Ministerial Support Current Exp., not Incl.	Local Preachers	Subscribers to the Advocates
1 Simpson Tab	A. D. Jacques	1	15	150	60	30	40	1	8500	1	5000	2000	672	4471	300	1	6	50
2 Wesley Ch., Austin	T. H. Wyatt	2	15	149	64	21	15	2	27000	2	3500		850	1300	500	2	34	
3 Austin Circuit	Zan Holmes	2	5	25	20			2	1500			105		250		1		
4 Cedar Creek	Shelley Harvey	2	2	10	60	10	28	2	2500	1	1500	20			30			25
5 Fayetteville Cir.	P. M. Carmichael	2						1		1								
6 Georgetown Sta.	J. S. Medlock	1	10	65	40	20	20	1	3000	1	1500		100	3000	75	1	4	20
7 La Grange Sta.	P. H. Phillips	2	8	38	28	10	8	2	3500	1	700				29		5	5
8 Hutto Ct.	E. V. McRae	3						2										
9 Giddings Circuit	Obie Coe	2	8	25	15	8	14	2	2000	1			40	400	20			
10 Littig and Manor	J. W. Stone	1	3	10	6			2	1500	1	1200		195		5	1	1	
11 Lockhart Circuit	T. M. Bruton	2	24	156	95	18	29	2	15000	1	1000	1028			105	2	4	85
12 Luling Circuit	L. L. Haynes	3	24	148	110	18	24	3	6400	1		269		60	100	1	4	34
13 Smithville Circuit	Marshall Majors	2	9	40	20	6	18	2	500	1	1000		17	36	10	1		3
14 Winchester Circuit	C. S. Schuler	2	12	28	20	15		2	3000	1	3000		29	26	5	1		5
15 St. Marcus	G. W. Skelley	1	4	14	10			2	2000	1	100				18	1	1	
TOTALS		27	139	908	533	156	186	28	76400	13	18500	3317	1903	9537	1694	11	68	222

K

Statistician's Report

Dallas District, West Texas Conference, for 1927

NAME OF CHARGES	NAME OF PASTORS	MINISTERIAL SUPPORT											CHURCH MEMBERSHIP									
		Support of Pastor			Support of District Superintendents			Support of Bishops		Support Conference Claimants			Bap- tisms	Prep. Mems.	Full Membership							
		Total Claim in House Rent	Total Paid in House Rent	Rental Value of Parsonage	Total Claim, in House Traveling Expenses	Total Paid in House Rent and Traveling Exp.	House Rent and Traveling Expenses	Claim	Paid	Claim	Paid	Total Paid for Ministerial Support	Total Deficiency	Children Baptized	Adults Baptized	Prep. Members Received During the Year	Prep. Members Now on Roll	Received from P. M. or on Profession of Faith	Received by Transfer	Mems. on Roll, not incl. Non-res. Inactive Mems.	Non-Resident Inactive Members	Deaths During Year
1 Corsicana Circuit	C. E. Connor	450	82	120	72	66		10		26		148	378			1	1	36	2	36		1
2 Denjson Station	J. H. Dudley	1184	970	144	105	105		10	8	32	10	1130	157	2	2	2	7	2	1	120	28	
3 Dallas, St. Paul	G. A. Deslandes	2820	2820	420	360	360		50	50	120	120	3350		3	4	14	53	9	84	711	5	11
4 Dallas, Trinity	J. H. Strait	500	394		85	85		8	2	9	3	431	42		3	9	9	14		74	20	1
5 Dallas, Warren	J. D. Rice	520	300		40	31		2	2	2	2	335	227			1	5	1		32	3	1
6 Dallas, Wesley	J. L. Watley	600	182		60	53		13	4	33	11	250	448	1			1			27	9	
7 Ennis and Ferris	J. B. Phoenix	1200	621	96	130	120		3	3	15	12	744	579					7		74		1
8 Ft. W. St. Andrews	R. M. Davis	2800	2800	40	330	330		30	30	100	100	3620				45	45	15	58	808		4
9 Ft. W. Thomp. Ch.	S. E. Jones	1770	1770	420	144	144		4	4		8	1938		6		15	10	5		154	1	
10 Hubbard & Dawson	H. J. Jackson	650	650	50	84	84		5	5	4	4	733						2		65	5	2
11 Milford and Italy	H. H. Qualls	800		60	820			5	5	10	10	497	430	2	1					114		
12 Mexia Circuit	S. N. Harvey	1200	560	120	180	180		30	1	40	2	43		15	2	17		17	2	360	10	12
13 Pelham Circuit	L. E. Muse	970	702	120	184	184		17	17	40	20	702	251	6		12	6	6		175	5	4
14 Sher. & Pilot Pt.	Frank Blair	600		80	152	97				15	3					2				94	40	2
15 Waxahachje Cir.	J. B. Eggleston	770	598	120	100	96		10	1	20	5	698	218	1			3			66	26	
16 Wichita Falls	J. B. Stone, Jr.	1420	1420	420	97	97		14	14	14	14	2109				5	5		8	56	10	
		644	628	144	50	50		2	2		3	683				4	8			43	1	1
		100	20		30			1		1	1	21	78							4	1	1
	TOTALS	18998	14164	2354	3043	2082		214	148	481	328	17069	3009	36	12	127	136	108	165	3033	174	42

Statistician's Report

Dallas District, West Texas Conference, for 1927—continued

NAME OF CHARGES	NAME OF PASTORS	SCHOOLS SUNDAY				EPWORTH LEAGUE		CHURCH PROPERTY							MISCELLANEOUS			
		No. of Sunday Schools	Officials and Teachers	All Depts. incl. C. R., H. Dept. Ofc. Schrs., Pupils	Average Attendance	Senior Members	Junior Members	Church Buildings	Estimated Value of Land and Buildings	Parsonages	Estimated Value of Land and Buildings	Value of other Property Endow'm't's, Bonds, Etc.	Paid for Building and Improvements	Paid on Old Indebtedness on Property.	Present Indebtedness on Property	Current Expn., not Incl. Ministerial Support	Local Preachers	Subscribers to the Advocates
1 Corsicana Circuit	C. E. Connor	1	4	21	15	10	7	600	1	1000			40	22	2	2	2	
2 Denison Station	J. H. Strait	1	16	90	42	1	28	4500	1	2500		12	171	764	208	4	7	28
3 Dallas, St. Paul	H. J. Jackson	1	17	240	185	72	43	115000	1	5000		302	3042	29169	965	3	62	375
4 Dallas, Trinity	S. E. Jones	1	8	64	50	24	24	4000	1	1000		500	833	100	25	2	2	8
5 Dallas, Warren	H. H. Qualls	1	8	40	20	5	7	3000	1			5		25	25		3	
6 Dallas, Wesley	J. B. Phoenix	2	9	40	25	10	9	1150	1			50	83	748	25	4		5
7 Ennis and Ferris	R. M. Davis	2	16	85	45	8	10	5000	1	500				88		3		
8 Ft. W. St. Andrews	J. H. Dudley	1	45	460	300	100	55	47460	1	5100			4746	19344	1388	5	25	400
9 Ft. W. Thomp. Ch.	G. A. Deslandes	2	14	86	52	60	40	1700	1	4000		100	1200	4000	375	3	8	200
10 Hubbard & Dawson	J. D. Rice	2	12	36	20	3	8	2000	1	1000				5	2	5	10	
11 Milford and Italy	J. L. Watley	3	10	67	40	10	15	6000	1	6000		20	20	271	30	6	10	
12 Mexia Circuit	S. N. Harvey	3	30	300	250	40	40	4500	1	5000		34	34		90	3	12	20
13 Pelham Circuit	L. E. Muse	3	15	110	75	38	45	3000	1	1000		15			40	3	7	36
14 Sher. & Pilot Pt.	Frank Blair	2	8	44	30	12	10	2300	2	1500		64		160	75	1		10
15 Waxahachje Cir.	J. B. Stone, Jr.	2	7	34	24	12		3500	2	1500		65	289	287	67		4	25
16 Wichita Falls	J. B. Eggleston	1	7	58	35	15	23	3000	1	3500			437	245	75		10	40
		1	7	30	20	17		1200	1	1000		85	175		144		4	56
		1	6	30	15			1000	1			50			10			
	TOTALS	30	289	1630	1193	437	362	115610	19	37100		1302	10470	53110	3637	32	164	1214

Statistician's Report

NAME OF CHARGES	NAME OF PASTORS	MINISTERIAL SUPPORT										CHURCH MEMBERSHIP										
		Support of Pastor		Support of District Superintendents		Support of Bishops		Support of Conference Claimants		Baptisms	Prep. Mem.	Full Membership										
		Total Claim in House Rent	Total Paid in House Rent	Rental Value of Parsonage	Total Claim, in House and Traveling Expenses	Total Paid in House and Traveling Expenses	House Rent and Traveling Expenses	Claim	Paid	Claim	Paid	Total Paid for Ministerial Support	Total Deficiency	Children Baptized	Adults Baptized	Prep. Members Received During the Year	Prep. Members Now on Roll	Received from P. M. or on Profession of Faith	Received by Transfer	Mems. on Roll, not incl. Non-res. Inactive Mem.	Non-Resident Inactive Members	Deaths During Year
1 Abilene	G. B. Cavett	500	175	72	100	100		2	2	5	5	282	397	2	3			26	6	26	5	1
2 Belton Station	W. W. Baker	1400	1000	100	160	160		2	2		5	1067	400	4	15		6	15	4	150	10	2
3 Brownwood Circuit	J. E. Brown	965	565	60	160	160		7	7	12	12	744	221	4	2	3	3	4		78		3
4 Bartlett Circuit	I. H. Pierce	652	452		188	188					10			18	8			58		108	20	
5 Cleburne Circuit	E. R. Gravelley	300		40						45										18		
6 El Paso Sta	F. J. Hutchinson	1000	801	133	160	160		6	3	24	5	969	885	3	1	1				70	16	2
7 Llano Circuit	P. H. Moore	576	551	96	86	86		14	10	20	21	678	275	3	4	8	32	5		42	12	
8 San Angelo Sta	M. L. Wyatt	1400	1400	200	160	146		7	7	15	20	1407		8	1	4	2	4		90	1	2
9 Temple Sta	D. B. Baker	1234	914	85	128	128		10	2		6	1387	320		2	1	1			80	15	3
10 Valley Mills Cir.	T. J. D. Simms	374	270	24	100	100		5	1	19	7	377	121				4			40	12	2
11 San Saba	C. H. Hamilton	647	455		100	80			2	15	5	542	205	3	2	5				52		
12 Moody Circuit	T. H. Foy	660	560	60	80	80		11	3		5	648	118	1	2	3		3		29	3	
13 Lubbock	R. F. Blackman	140	140	60	80							200		1				25		25		
	TOTALS	9879	7283	930	1552	1448		64	38	185	101	8301	2823	42	40	35	38	140	10	808	94	16

Statistician's Report

NAME OF CHARGES	NAME OF PASTORS	SUNDAY SCHOOLS				EPWORTH LEAGUE		CHURCH PROPERTY								MISCELLANEOUS			
		No. of Sunday Schools	Officials and Teachers	All Depts. incl. C. R., H. Dept. Ofs. Schrs., Pupils	Average Attendance	Senior Members	Junior Members	Church Buildings	Estimated Value of Land and Buildings	Parsonages	Estimated Value of Land and Buildings	Value of other Property Endow'm't's, Bonds, Etc.	Paid for Building and Improvements	Paid on Old Indebtedness on Property.	Present Indebtedness on Property	Ministerial Support Current Exp., not Incl.	Local Preachers	Subscribers to the Advocates	Amount Contributed by Ladies' Aid Society
1 Abilene	G. B. Cavett	15	117	93	330	117	116	15	46850	7	10700			54	54	3	3	30	
2 Belton Station	W. W. Baker	1	5	18	12	8	14	1	3000	1	500		10	105	215	108		4	
3 Brownwood Circuit	J. E. Brown	2	15	82	45	16	32	2	6000	2	1800		750	100	825	110	1	20	
4 Bartlett Circuit	I. H. Pierce	3	7	64	32	10	20	3	9350	2	1000		80	200	180	10	2	10	
5 Cleburne Circuit	E. R. Gravelley		18	70	40	10	12	3	4000										
6 El Paso Sta	F. J. Hutchinson	1						1					117	146	1100	125		3	69
7 Llano Circuit	P. H. Moore	1	8	35	20	11		1	1100		1000		500			65	1	6	81
8 San Angelo Sta	M. L. Wyatt	2	14	66	35	14	12	1	700		1100		440		283	250		4	100
9 Temple Sta	D. B. Baker	1	10	40	35	25	16	1	10000	1	2000		75	1050	2694	150	2	4	5
10 Valley Mills Cir.	T. J. D. Simms	1	9	35	25	10		1	5000	1	3000		114		150	30		3	53
11 San Saba	C. H. Hamilton	2	10	28	15	12	8	2	3000	1	300		160		60	35		3	35
12 Moody Circuit	T. H. Foy		9	20	50				4000				1875	15	875	49		3	
13 Lubbock	R. F. Blackman		9	30	14								300			5			2
	TOTALS	1	3	15	7	6	2		300				4121	1616	6436	911	8	39	408

Statistician's Report

NAME OF CHARGES	NAME OF PASTORS	MINISTERIAL SUPPORT										CHURCH MEMBERSHIP										
		Support PASTORS			Support of District Superintendents			Support of Bishops		Support of Conference Claimants		Baptisms	Prep. Mems.	Full Membership								
		Total Claim in House Rent	Total Paid in House Rent	Rental Value of Parsonage	Total Claim, in House Rent and Traveling Exp.	Total Paid in House Rent and Traveling Exp.	House Rent	Traveling Expenses	Claim	Paid	Claim	Paid	Total Paid for Ministerial Support	Total Deficiency	Children Baptized	Adults Baptized	Prep. Members Received During the Year	Prep. Members Now on Roll	Received from P. M. or on Profession of Faith	Received by Transfer	Mems. on Roll, not incl. Non-res. Inactive Mems.	Non-Resident Inactive Members
1 Belmont Circuit	J. D. Mackey	1500	344	120	240	126	5	10	5	525	1330	2	18	28	28	5	1	365	7	3		
2 Cuero Sta	R. S. Mosby	1120	1120	120	160	160	10	10	15	1295	45	3	3	24	1	5	164	12	3			
3 Floresville Circuit	H. O. McCutcheon	900	225	200	140	140	10	10		365	495	6	1	5		2	50	8	1			
4 Gonzales Sta	N. J. Moore	1500	706	150	240	240	18	1	75	2	949	883	9	4		1	137	10	2			
5 Hondo Circuit	B. J. Easter	700	300	60	180	180	8	3	10	4	467	481	1		1	1	71		1			
6 Jacob's Chap. S. A.	J. W. Weakley	1800	1705	180	180	180	25	5	30	31	1965	139	10	3	5	3	8	10	270	30	2	
7 Kenwood, S. A.	C. E. Whitiker	1380	805	180	140	110	6	2	30	5	922	485	18	16	8	8	1	21	96	8	1	
8 Kerrville Circuit	A. G. Russell	800	800	120	140	140	5		35	10	808		3		11	1	11		86		2	
9 Kerr Hill, S. A.	M. W. Stevens	1380	849	180	140	140	10	10	10	10	989	351	2	4	4	4	4	2	11	25	2	
10 Nixon Circuit	M. C. Ellison	587	587	60	587	587	10	2	10	10	599	633		2	8	8			59		8	
11 Olmos Circuit	Elmo Watson	600	81	100	100	48	2	2	3	3	133	566	9	2	9	9			65			
12 Pearsall Circuit	N. W. Stevens	500	220				3	3	10	10	133	267	2	1					20	5		
13 Pleasonton	H. L. McKinney	600	300	72	100	100			10	8	408	302	6	1			1		29	21	1	
14 Seguin Circuit	J. F. Muse	1120	820	120	140	140	5	5	10	10	975	313	15		1	1	6		84		3	
15 St. Paul, San An.	J. W. Warren	2460	2460	360	360	360	30	30	100	100	2845				25	20	20	50	900	50	14	
16 West End, S. A.	C. T. Wardah	660	660		80	80	2	2	2	2	744		4	10	2	2	14	2	40	4		
17 Yorktown Circuit	E. C. Henderson	655	142	100				5	5	10	1040		2	9	20		50		100			
18 East St. Paul S. A.	C. W. Franklin	900	830	300	100	105																
19 Lavernia Circuit	J. H. Napier																					
20 S. A. Hts., S. A.	H. C. Mills					2								6						15		
21 Gonzales Circuit	E. T. Allen	900	190		140	12	5	3	10	8	273	782		7	7	10			113	5	5	
	TOTALS	20106	13154	2422	3167	2850	159	93	390	237	15429	7022	92	84	137	139	127	103	2675	185	40	

Statistician's Report

NAME OF PASTORS	NAME OF CHARGES	SUNDAY SCHOOLS				EPWORTH LEAGUE		CHURCH PROPERTY							MISCELLANEOUS				
		No. of Sunday Schools	Officials and Teachers	All Depts. incl. C. R., H. Dept. Ofs. Schrs., Pupils	Average Attendance	Senior Members	Junior Members	Church Buildings	Estimated Value of Land and Buildings	Parsonages	Estimated Value of Land and Buildings	Value of other Property Endow'm't's, Bonds, Etc.	Paid for Building and Improvements	Paid on Old Indebtedness on Property.	Present Indebtedness on Property	Current Exp., not Incl. Ministerial Support	Local Preachers	Subscribers to the Advocates	Amount Contributed by Ladies' Aid Society
1 Belmont Circuit	J. D. Mackey	3	14	121	65	14	3	3000	2	800			90		5	6			
2 Cuero Sta	R. S. Mosby	1	11	73	40	14	1	5000	1	4000			350	572	150		14	177	
3 Floresville Circuit	H. O. McCutcheon	1	16	36	15		1	3500	1	600		12			16		3	20	
4 Gonzales Sta	N. J. Moore	1	20	137	75	34	1	4000	1	1000					60		3	20	
5 Hondo Circuit	B. J. Easter	2	11	55	25	26	1	3500	1	500			70	240	56	1	3	10	
6 Jacob's Chap. S. A.	J. W. Weakley	1	15	175	60	65	1	10000	1	2500			935	5662	275	5	8	38	
7 Kenwood, S. A.	C. E. Whitiker	1	8	75	35	25	1	5000	1	2500		500	355	2800	125	4	1	165	
8 Kerrville Circuit	A. G. Russell	2	12	62	30	30	3	5000	1	2000		850		850	220	1	5		
9 Kerr Hill, S. A.	M. W. Stevens	1	10	86	50	16	1	3000	1	1600			159	661	75		2	22	
10 Nixon Circuit	M. C. Ellison	2	10	43	23	8	3	3000	1	500		49			51	1		104	
11 Olmos Circuit	Elmo Watson	3	6	40	15	10	3	2500	3	1000			10	380					
12 Pearsall Circuit	N. W. Stevens	2	2	20	20		2	800									1		
13 Pleasonton	H. L. McKinney	2	10	32	22	15	2	1500		300		350			38	2	2	65	
14 Seguin Circuit	J. F. Muse	1	10	40	30	12	1	2000	1	1500			108	106	76	1		24	
15 St. Paul, San An.	J. W. Warren	1	36	450	225	75	1	82200	1	35000			5271	12500	1500	2	15	158	
16 West End, S. A.	C. T. Wardah	1	7	43	30	25	1	2000				15	34	650	12	3		15	
17 Yorktown Circuit	E. C. Henderson	1		20	15		1	1500									2		
18 East St. Paul S. A.	C. W. Franklin	1	12	40	40	20	1	10625	1	3125		1200	600	9500	342	2		75	
19 Lavernia Circuit	J. H. Napier	2					1		1								1		
20 S. A. Hts., S. A.	H. C. Mills	1	5	15	8			200					75	100	10				
21 Gonzales Circuit	E. T. Allen	1	16	74	30		2	2500	1						12	2		2	
TOTALS		30	231	1618	853	389	317	26	138625	16	12825		2976	8353	34021	4013	33	66	743

Statistician's Report

NAME OF CHARGES	NAME OF PASTORS	MINISTERIAL SUPPORT										CHURCH MEMBERSHIP									
		Support of Pastor		Support of District Superintendents			Support of Bishops		Support of Conference Claimants			Baptisms	Prep. Mem.	Full Membership							
		Total Claim in House Rent	Total Paid in House Rent	Rental Value of Parsonage	Total Claim, in House Rent and Traveling Exp.	Total Paid in House Rent and Traveling Exp.	House Rent and Traveling Expenses	Claim Paid	Claim Paid	Total Paid for Ministerial Support	Total Deficiency	Children Baptized	Adults Baptized	Prep. Members Received During the Year	Prep. Members Now on Roll	Received from P. M. or on Profession of Faith	Received by Transfer	Mems. on Roll, not incl. Non-res. Inactive Mem.	Non-Resident Inactive Members	Deaths During Year	
1 Alleyton & E. Lake	D. L. Mosby	700	250	60	108	102	3	3	27	5	19954	2891	72	36	86	76	58	11	1808	236	27
2 Cologne Circuit	Allen M. Harris	100	250	60	108	102	3	3	27	5	250	450	6	6	4	7	4	1	84	20	2
3 Columbus Sta.	George Waters	1060	760	60	132	132	10	3	30	7	250	450	6	6	4	7	4	1	84	20	2
4 Columbus Circuit	D. F. Vance	860	670	60	136	136	10	5	40	10	893	157	5	3	10	1	10	1	181	18	1
5 Edna Circuit	J. T. Carper	1360	900	60	2	189	13	6	30	12	761	235	5	3	8	25	8	25	176	18	1
6 Garwood Circuit	T. H. Bryant	400	400	60	60	60	3	1	15	3	1106	441	20	25	8	25	8	1	250	4	4
7 Hallettsville Cir.	G. M. Mallory	972	83	72	132	132	9	4	27	9	464	14	11	11	3	8	31	1	3	4	4
8 Oakland Circuit	J. N. Hooey	1200	1175	10	255	1244	2	2	6	6	1028	134	11	11	3	8	1	130	40	1	
9 Schulenburg Cir.	A. M. Mason	1100	758	48	128	117	8	5	48	8	1252	10	3	14	8	10	1	260	18	2	
10 Sublime Circuit	W. M. Mosley	300	184	40	60	52	3	18	2	881	396	10	3	14	8	10	1	142	43	4	
11 Victoria Sta.	S. D. Mosley	1220	1220	120	320	1220	23	7	60	28	239	145	1	1	15	15	1	34	17	1	
12 Weiramar Circuit	A. C. Holden	200	5	20	20	20	1258	121	2	1	4	4	4	4	4	4	4	220	42	4	
13 Wharton Circuit	J. H. Marshall	589	589	69	100	100	25	12	15	5	25	195	12	4	16	3	3	17	17	1	
14 Yoakum Circuit	J. J. H. Swann	1120	980	120	140	140	10	5	25	20	689	22	12	4	16	16	6	90	3	2	
TOTALS		11512	7824	799	1641	1506	25	106	43	347	117	1325	145	1	1	1	1	140	15	4	

Statistician's Report

NAME OF CHARGES	NAME OF PASTORS	SUNDAY SCHOOLS						EPWORTH LEAGUE		CHURCH PROPERTY					MISCELLANEOUS					
		No. of Sunday Schools	Officials and Teachers	All Depts. incl. C. R., H. Dept. Of. Schrs., Pupils	Average Attendance	Senior Members	Junior Members	Church Buildings	Estimated Value of Land and Buildings	Parsonages	Estimated Value of Land and Buildings	Value of other Property Endow'm't's, Bonds, Etc.	Paid for Building and Improvements	Paid on Old Indebtedness on Property.	Present Indebtedness on Property	Current Exp., not Incl. Ministerial Support	Local Preachers	Subscribers to the Advocates	Amount Contributed by Ladies' Aid Society	
1 Alleyton & E. Lake	D. L. Mosby	3	12					2		1							1	5	10	
2 Cologne Circuit	Allen M. Harris	3	12	60	45	25	12	3	3000	1	800		70	5			44	1	15	
3 Columbus Sta.	George Waters	1	12	167	50	32	15	1	5000	1	500		572				15	3	5	
4 Columbus Circuit	D. F. Vance	2	13	103	37	18	33	1	2500	1	500		25				30	1	15	
5 Edna Circuit	J. T. Carper	4	26	152	65	14	15	4	3500	1	500		120	80	260		5	1	3	
6 Garwood Circuit	T. H. Bryant	1	9	20	15			1	800				25				5			
7 Hallettsville Cir.	G. M. Mallory	1	11	59	25	9	24	1	5000	1	800				9		11	5	13	
8 Oakland Circuit	J. N. Hooley	4	26	143	85	25	35	4	7500	1	2500		780		410		25	3	18	
9 Schulenburg Cir.	A. M. Mason	3	25	75	40	30	44	3	7500				30		92		25	4	6	
10 Sublime Circuit	W. M. Mosley	2	10	20	15			2	1200	1	500		81	4						
11 Victoria Sta.	S. D. Mosley	1	12	126	95	45	35	1	8000	1	1500		372		450		234	1	10	
12 Weiramar Circuit	A. C. Holden	1	7			14		1	1300											
13 Wharton Circuit	J. H. Marshall	2	14	56	45	8		2	3000				50	163	250		45	2	3	
14 Yoakum Circuit	J. J. H. Swann	2	18	89	60	30		2	4000	1	1500		500	150	600		80		15	
	TOTALS	31	198	1050	567	250	213	29	48300	10	12100		2550	239	1821		538	23	40	138

Statistician's Report

NAME OF CHARGES	NAME OF PASTORS	MINISTERIAL SUPPORT										CHURCH MEMBERSHIP										
		Support of Pastor			Support of District Superintendents			Support of Bishops		Support of Conference Claimants		Baptisms	Prep. Mem.	Full Membership								
		Total Claim in House Rent	Total Paid in House Rent	Rental Value of Parsonage	Total Claim, in House and Traveling Expenses	Total Paid in House Rent and Traveling Exp.	House Rent and Traveling Expenses	Claim	Paid	Claim	Paid	Total Paid for Ministerial Support	Total Deficiency	Children Baptized	Adults Baptized	Prep. Members Received During the Year	Prep. Members Now on Roll	Received from P. M. or on Profession of Faith	Received by Transfer	Mems. on Roll, not incl. Non-res. Inactive Mem.	Non-Resident Inactive Members	Deaths During Year
1 Bremond Circuit	G. F. Alexander	550	483	36	160	152		8	1	10	1	637	101	15	15		16	1	112	17	1	
2 Bowman Chapel	John Coe	950	677	96	160	156		8	2	10	5	860	90	11	11	11	10	1	209	15	4	
3 Bethlhem Circuit	H. E. Kuykendall	400	260		100	67		5	1	8	2	330	183	2	2	2			62			
4 Calvert Sta	A. D. Holden	1144	694	144	160	140		2	2	9	2	690	460	3	2		14		668		2	
5 Chilton Circuit	F. D. Young	1000	620	120	160	151		20	4	20	4	797	403	14	3	6	2		120	22	3	
6 Gurley Circuit	I. T. Sauford	950	361		150	144		8	2	12	5	512	608	10		5			171		1	
7 Groesbeck Cir	W. B. Lott	1770	888	120	160	134		8	2	9	4	1028	418			4			113	10	4	
8 Lott Circuit	G. M. Moten	300	62		72	26			1		3			1	1		5		40			
9 Marlin Sta	J. G. Brown	1370	1370	120	200	200		6	6	31	31	1607		2	7	12		6	233	5	4	
10 Mart Circuit	M. B. Burkley	996	600	96	200	200		8	2	15	2	404	415	2	18	31	31		254		6	
11 Maysfield Circuit	Esau Smith	1020	620	120	140	140		6	2	10	4	772	248		1	1	1		147	20	1	
12 Rockey Circuit	H. A. Jones	1160	650	160	160	149		7	2	12	6	797	570			16		1	186	10	1	
13 Waco Circuit	E. Davis	400	144	48	80	80	6	4	4	6	6	284	260			2			50		1	
14 Waco, Mt. Zion	B. A. Byars	1176	944	240	120	99		7	6	15	13	1062	255	14	3	17		32	23	182	28	1
15 Waco, St. James	C. S. Williams	2360	2360	360	300	300			35	18	50	27063			3	15	5	10	3	415	86	12
16 Cameron	R. Alonzo		25		40	9		3	2	5		36	12						22			
17 Kosse Circuit	R. L. Palmer	250	274		72	72		4	2	5	3	351	4	1	9	25	5	20	5	70		
18 Jones Chapel	Sam Graham	1072	576		100	100		9	4	12	6	686	567	6	3		4	6	2	99	4	3
19 Lorena	E. G. Gray		25																7			
TOTALS		16367	11633	1660	2474	2309	6	113	82	207	117	13616	4095	70	58	163	61	203	44	3160	217	44

Statistician's Report

NAME OF CHARGES	NAME OF PASTORS	SUNDAY SCHOOLS				LEAGUE EPWORTH			CHURCH PROPERTY							MISCELLANEOUS			
		No. of Sunday Schools	Officials and Teachers	All Depts. incl. C. R., H. Dept. Ofs. Schrs., Pupils	Average Attendance	Senior Members	Junior Members	Church Buildings	Estimated Value of Land and Buildings	Parsonages	Estimated Value of Land and Buildings	Value of other Property Endow'm't's, Bonds, Etc.	Paid for Building and Improvements	Paid on Old Indebtedness on Property.	Present Indebtedness on Property	Current Exp., not Incl. Ministerial Support	Local Preachers	Subscribers to the Advocates	Amount Contributed by Ladies' Aid Society
1 Bremond Circuit	G. F. Alexander	2	10	64	36	25	20	2	4000	1	1000			76	78	75	1	5	11
2 Bowman Chapel	John Coe	2	16	81	61	38	24	2	2600	1	800		166	125		41	3	2	
3 Bethlhem Circuit	H. E. Kuykendall	2	5	15	8			2	900					75	13	3		1	
4 Calvert Sta	A. D. Holden	1	8	52	42			1	12200	1	2000		60			228	1	9	33
5 Chilton Circuit	F. D. Young	2	13	98	60	24	32	2	6000	1	70		500	40		68	3	3	14
6 Gurley Circuit	I. T. Sauford	2	14	80	40	14	16	2	4500				72	269	660	20	1		5
7 Groesbeck Cir	W. B. Lott	2	14		30	16	10	2	5000	1	15000				70	4	1		18
8 Lott Circuit	G. M. Moten	1	4	5	5	10		3	1800							2	2		
9 Marlin Sta	J. G. Brown	1	10	85	53	20	27	1	3500	1	1500					240	4	7	14
10 Mart Circuit	M. B. Burkley	2	12	125	25	25	12	3	3560	1	1500		112			18	2	3	18
11 Maysfield Circuit	Esau Smith	2	19	81	40	18	10	1	2000	1	500			18	86	39	1		
12 Rockey Circuit	H. A. Jones	2	15	85	40	40	40	2	4500	1	1000		30			25	5	6	
13 Waco Circuit	E. Davis	2	9	30	20		20	2	2800	1	200		332			12	1		5
14 Waco, Mt. Zion	B. A. Byars	1	7	92	45	20	34	1	2500	1	2000			108	777	100	1	2	109
15 Waco, St. James	C. S. Williams	1	14	237	65			1	87700	1	4000			32000	32325	1017	4	1	
16 Cameron	R. Alonzo	1	2	22	12			1	600		600		65		33		1		2
17 Kosse Circuit	R. L. Palmer	2	9	42	336			2	600				85		75		1	3	1
18 Jones Chapel	Sam Graham	1											250	12		40	1	3	
19 Lorena	E. G. Gray																		
TOTALS		31	189	1234	656	260	290	30	147270	12	30170		1672	3923	34116	1932	33	54	230

Statistician's Report

NAME OF CHARGES	NAME OF PASTORS	MINISTERIAL SUPPORT										CHURCH MEMBERSHIP										
		Support of Pastor		Support of District Superintendents			Support of Bishops		Support of Conference Claimants			Baptisms	Prep. Mem.	Full Membership								
		Total Claim in House Rent	Total Paid in House Rent	Rental Value of Parsonage	Total Claim, in House Rent and Traveling Exp	Total Paid in House and Traveling Expenses	House Rent and Traveling Expenses	Claim	Paid	Claim	Paid	Total Paid for Ministerial Support	Total Deficiency	Children Baptized	Adults Baptized	Prep. Members Received During the Year	Prep. Members Now on Roll	Received from P. M. or on Profession of Faith	Received by Transfer	Mems. on Roll, not incl. Non-res. Inactive Mem.	Non-Resident Inactive Members	Deaths During Year
1 Bloomington Cir.	J. H. Brown	300	300		60	60			9	2	363	7	2	8	10	10	14		61	5	1	
2 Brownsville Circuit																						
3 Beeville Circuit	L. W. Roberts	560	400	500	100	100	7	2	12			987		282		716		877	4	16	216	
4 Bishop & Robs'twn	Dave Johnson	200	100		20	20			12		504	123		3	3	3	1		54	2	1	
5 Corpus Christi	W. M. White	1120	1120	120	100	100	100	5	2	50	12	100	1		1	1			14		1	
6 Edinburg Circuit	Z. E. King	100	100		20	3			5		1222	53	1	2	2	2	1		90	20	1	
7 Fallurias Circuit	Supplied										103	5							10			
8 Goliad Sta.	R. W. Allen	950	950	100	108	108	7	7	7	25	5											
9 Harlingjn Circuit																						
10 Kingsville Circuit	F. M. Hudspeth	944	644		100	100		3	3	10	10	1227	20		1				85	20	2	
11 Mathis and Alice	S. J. Johnson				20	20					557	300	3	3	3	3	18	2	53	8		
12 Odoms Circuit	W. M. Bennett	100			20	20													80			
13 Raymondsville											20	80		18	18		18		14			
14 San Bonito Cir.																				27		
15 Sinton and Taft																						
TOTALS		4274	3614	720	748	531	109	32	14	131	19	3069	588	8	34	38	9	52	2	435	82	6

Statistician's Report

	SUNDAY SCHOOLS		LEAGUE EPWORTH		CHURCH PROPERTY						MISCELLANEOUS						
	No. of Sunday Schools	Officials and Teachers	Senior Members	Junior Members	Church Buildings	Estimated Value of Land and Buildings	Parsonages	Estimated Value of Land and Buildings	Value of other Property Endow'm't's, Bonds, Etc.	Paid for Building and Improvements	Paid on Old Indebtedness on Property.	Present Indebtedness on Property	Ministerial Support Current Exp., not Incl.	Local Preachers	Subscribers to the Advocates	Amount Contributed by Ladies' Aid Society	
1 Bloomington Cir. 1	3	15															
2 Brownsville Circuit	2	12	18	1	3501	1	500		109	261	444	41					2
3 Beeville Circuit	1	3	7		2100	1	2300		400			6					29
4 Bishop & Robstwn	1	8		1	600	1			400		250	500					15
5 Corpus Christi																	
6 Edinburg Circuit																	
7 Falurias Circuit																	
8 Goliah Sta.	1	10	30	1	4000	1	900		50	21		30					10
9 Harlingin Circuit	1	4	6	1	1150				25			330					160
10 Kingsville Circuit																	
11 Mathis and Alice	1	3															
12 Odoms Circuit																	
13 Raymondsville																	
14 San Bonito Cir.																	
15 Sinton and Taft																	
J. H. Brown																	
TOTALS	11	58	54	57	5	11351	3	3700	287	282	216	877	4	16		216	

NAME OF PASTORS

NAME OF CHARGES

No. of Sunday Schools

Officials and Teachers

All Depts. incl. C. R., H. Dept. Ois. Schrs., Pupils

Average Attendance

Senior Members

Junior Members

Church Buildings

Estimated Value of Land and Buildings

Parsonages

Estimated Value of Land and Buildings

Value of other Property Endow'm't's, Bonds, Etc.

Paid for Building and Improvements

Paid on Old Indebtedness on Property.

Present Indebtedness on Property

Ministerial Support Current Exp., not Incl.

Local Preachers

Subscribers to the Advocates

Amount Contributed by Ladies' Aid Society

Statistician's Report

NAME OF CHARGES	NAME OF PASTORS	MINISTERIAL SUPPORT										CHURCH MEMBERSHIP										
		Support of Pastor		Support of District Superintendents		Support of Bishops		Support of Conference Claimants		Baptisms	Prep. Mem.	Full Membership										
		Total Claim in House Rent	Total Paid in House Rent	Rental Value of Parsonage	Total Paid in House and Traveling Expenses	Total Claim, in House Rent and Traveling Exp.	House Rent and Traveling Expenses	Claim	Paid			Claim	Paid	Total Paid for Ministerial Support	Total Deficiency	Children Baptized	Adults Baptized	Prep. Members Received During the Year	Prep. Members Now on Roll	Received from P. M. or on Profession of Faith	Received by Transfer	Mem. on Roll, not incl. Non-res. Inactive Mem.
1 Austin -----	J. L. Edmondson---	11981	7650	1545	1952	1383	---	115	67	253	253	7929	3671	53	23	104	76	32	18	1785	238	36
2 Dallas -----	J. H. Childs-----	18598	14164	2354	3043	2082	---	214	148	481	328	17069	3008	36	12	127	136	108	165	3033	174	42
3 San Angelo-----	S. E. Blacknell---	20648	7283	930	1532	1448	---	64	38	185	101	8301	2823	42	40	35	38	140	10	808	94	16
4 San Antonio-----	K. W. McMillan---	20106	18154	2422	3167	2850	---	159	93	390	237	15429	7022	92	84	137	139	127	103	2675	185	48
5 Victoria -----	W. M. Ellison-----	11512	7824	799	1641	1506	---	106	43	347	117	9954	2891	72	36	86	76	57	11	1808	236	27
6 Waco -----	J. W. Downs-----	16367	11633	1660	2474	2309	---	113	82	207	117	13616	4095	70	58	163	61	203	44	3610	217	44
7 Corpus Christi---	J. J. Hardemon---	14274	3614	720	748	531	---	32	14	131	19	3069	508	8	34	38	9	52	2	435	82	6
		103956	653221	10430	15337	15027	---	803	485	1994	1172	75367	24098	373	287	690	535	719	353	14100	1226	219

Statistician's Report

NAME OF CHARGES	SUNDAY SCHOOLS		LEAGUE EPWORTH		CHURCH PROPERTY										MISCELLANEOUS				
	No. of Sunday Schools	Officials and Teachers	All Depts. incl. C. R., H. Dept. Ofs. Schrs., Pupils	Average Attendance	Senior Members	Junior Members	Church Buildings	Estimated Value of Land and Buildings	Parsonages	Estimated Value of Land and Buildings	Value of other Property Endow'm't's, Bonds, Etc.	Paid for Building and Improvements	Paid on Old Indebtedness on Property.	Present Indebtedness on Property	Current Exp., not Incl. Ministerial Support	Local Preachers	Subscribers to the Advocates	Amount Contributed by Ladies' Aid Society	
1 Austin -----	J. L. Edmondson	27	139	908	533	156	186	28	76400	13	18500	---	3317	1903	9537	1694	11	68	222
2 Dallas -----	J. H. Childs	30	239	1690	1193	437	362	27	115610	19	37100	---	1302	10470	53110	3637	32	164	1214
3 San Angelo -----	S. E. Blacknell	15	117	493	330	117	116	15	46850	7	10700	---	4121	1610	6436	911	8	39	408
4 San Antonio -----	K. W. McMillan	30	231	1618	853	389	317	26	138625	16	25825	---	2976	8353	34021	4031	33	66	743
5 Victoria -----	W. M. Ellison	31	198	1050	567	250	213	29	48300	10	12100	---	2550	239	1821	538	23	40	138
6 Waco -----	J. W. Downs	31	189	1234	656	260	290	30	147270	12	30170	---	1672	3923	34116	1932	33	54	230
7 Corpus Christi -----	J. J. Hardemon	11	58	259	157	54	57	5	11351	3	3700	---	984	282	716	877	4	16	216
		175	1171	7192	4289	1633	1541	160	548406	260	138095	---	16922	26786	139757	13557	144	442	3171

Sunday School Statistics

AUSTIN DISTRICT

NAMES OF CHARGES OR CHURCHES	Schools on Charge	Schools Using Graded Lessons	Officers and Teachers	PUPILS ENROLLED										All Depts., Cradle Roll, Home Dept., Officers, Teachers, Pupils	Average Attendance	Pupils, incl. Home Dept. Ch. Mem. or Prep. Mem.	Accessions to Church from Mem. of S. S.	Paid by Sunday School in World Service
				Cradle Roll	Beginners	Primary	Junior	Intermediate	Senior	Young People	Adults	Home Department						
1 Simpson Tab., Austin	1	1	15	30	10	15	10	10	8	18	15	34	150	60	140	15	25	
2 Wesley Chapel, Austin	2	1	15	21	15	20	29	25	15	10	13	149	64		10	75		
3 Austin Circuit	2		5	2		4	6	3		5	5	25	20			5		
4 Cedar Creek	2		10	6	6	14	9	6	8		1	60	45	53	3	5		
5 Fayetteville	2		12	5	8	7	12	8	8		5	65	45					
6 Georgetown Sta.	2		10									65	4					
7 La Grange Sta.,	2		8	4	5	6		10	13			38	28			12		
8 Hutto Circuit	3		15									45		45				
9 Giddings Circuit	2		8			13	4	8				25	15	33				
10 Littig and Manor	1	1	3	10							10	10	6	10				
11 Lockhart Circuit	2	1	18	12	16	20	17	10	11	9	18	139	60	68	5	10		
12 Luling Circuit	3		24									148	110					
13 Smithville Circuit	2		9									40	20					
14 Winchester Circuit	2		12									28	20					
15 San Marcos	1		4									14	10					
Totals	28	9	168	90	60	86	96	77	71	42	67	42	991	496	507	33	132	

DALLAS DISTRICT

1 Corsicana Circuit	1		4			3	2	5			10		21	15		2	2
2 Denison Sta.	1	1	16	7	4	20		12	10	12	10		90	42	75	1	65
3 Dallas, St. Paul	1		17	18	36	31	26	25	32	36	35	11	240	135	189	23	50
4 Dallas, Trinity	1		8	6	4	8	24	8	4	5	5		64	50	9	1	41
5 Dallas, Warren	1		8		5	14	8	5	3	2	3		40	20	28	1	15
6 Dallas, Wesley	2	2	9	3		5	2	3	4	8	15		40	25			12
7 Ennis and Ferris	2		16	4	4	5	10	9	13	20			85	15			20
8 Ft. Worth, St. Andrews	1		45	50	48	68	60	65	45	40	60	64	460	300	450	10	300
9 Ft. Worth, Thompson Chapel	1	1	14	12	8	12	15	10	8	16	5		100	52	74	5	50
10 Hubbard and Dawson	2		12			5	4	5		4			36	20	32		10
11 Milford and Italy	3		10	8	10	9	3	10	10	10	3		67	40	40	2	8
12 Mexia Circuit	3		30		40	50	75	35	30	40	30		300	250		12	10
13 Pelham Circuit	3		15	8	10	13	15	25	15	20	10	3	118	75	118	30	42
14 Pilot Point																	
15 Sherman Sta.	2		8	2		6	8	4	12	8	4		44	30	44		
16 Waxahachie Circuit	2		7	3	1	6	3	7		6	8		34	24	34		20
17 Wichita Falls Sta.	1	1	7	3	5	7	13	5	4	4	5		53	35		5	20
18 Cown	1		7	1	2	11			23				30	23		4	15
19 Angus	1		6		3	8	10	7					30	35		1	41
Totals	29	5	239	125	191	244	278	240	212	237	209	78	1832	1166	1093	107	686

SAN ANGELO DISTRICT

Abilene	1		5	3	4			4			8		18	12	8	2	10
Belton Sta	2		15	6	20	18	15	12	6	5			82	45		14	5
Brownwood Cir.	3		7	7	6	7	9	10	5	5	15		64	32	2	2	15
Bartlett Cir.	3	3	18										70	40		28	12
Cleburne Cir.	1	1	2	1		2		2					6	6			
El Paso Sta.	1		8	5	3	4	3	4	7	4	5		35	20			5
Llano Cir.	2		14	9	6	8		14	8	10	10	12	66	35	66	7	10
San Angelo Sta.	1		10	6	4	4	10	5	6	9	12		40	30	40		25
Temple Sta.	1	1	9	10		6			5		10		35	35			15
Valley Mills Cir.	1		7	7									28	15	20		5
San Saba	2	2	9	11	5	6	10	4	5	4	45		90	50		3	26
Moody Cir.	2		9		3	2	2	1	3	5	5		26	14	19	2	10
Lubbock	1	1	3	3			2	6	6	6	15		33	20			
Total	21	8	116	55	51	58	51	62	51	48	125	12	593	354	69	58	138

Sunday School Statistics

SAN ANTONIO DISTRICT

NAMES OF CHARGES OR CHURCHES	Schools on Charge	Schools Using Graded Lessons	Officers and Teachers	PUPILS ENROLLED								Home Department	All Depts., Cradle Roll, Home Dept., Officers, Teachers, Pupils	Average Attendance	Pupils, incl. Home Dept. Ch. Mem. or Prep. Mem.	Accessions to Church from Mem. of S. S.	Paid by Sunday School in World Service	Paid for Sunday School Supplies
				Cradle Roll	Beginners	Primary	Junior	Intermediate	Senior	Young People	Adults							
Belmont Cir. -----	2		14										135					
Cuero Sta. -----	1		11	3	9	8	13		10	9	10		73	40	73	5	50	42
Floresville Sta. -----	3		6		8	4	5	4	4	4	6		36	15	15	5	88	
Gonzales Sta. -----	2		16		8								74	30		4		
Hondo Cir. -----	2		11										56	25		1	10	8
Jacob's Chapel, S. A. -----	1	1	15	15	20	15	25	15	15	15	22	33	178	65	95		50	75
Kerrville Cir. -----	2	1	12		8	12	12	20	10									
Kerr Hill, S. A. -----	1	1	10	10	4	15	10	8	10	15	8		83	15	83	4	10	15
Nixon Cir. -----			6	15	7	4	6	5					43	27		4	15	26
Olmos Cir. -----	1		5	2	4	6	15	10	5	3			40	15	9	9	5	10
Pearsall Cir. -----	2		2										20	20	4			
Pleasanton Cir. -----	1	1	10	6	9	6	4	5	2				42	27		6		15
Seguin Cir. -----	1		10		6	5	5	6	5		5		40	30	35	1	14	15
St. Paul, S. A. -----	1	1	35	20	40	60	85	40	35	40	25	40	385	215		15	350	300
Yorktown Cir. -----	2												20	15				
East St. Paul -----	1		12	6	8	10	5	7	6	8	5		54	40	32	25		15
West End, S. A. -----	1	1	7		6	7	7	13	6	1	3		43	30	36	14	5	7
Gonzales Cir. -----	1		7		6	10	12	15					59	36				
Kenwood, S. A. -----	1		8	6	10	10	10	15	6	10	8	1	75	40	60		10	16
Total -----	29	7	208	76	160	190	223	181	128	106	95	73	1375	722	468	105	539	543

VICTORIA DISTRICT

Alleyton and Eagle Lake -----	3	3	12			12		15	13		5		57	25	45		10	2
Cologne Cir. -----	3	1	12	60		5	7	10	5	5	8	20	60	45		3	8	15
Columbus Sta. -----	1	1	12	26	12	16	20	16	16	19	25		182	180			60	23
Edna Cir. -----	3	15											80					
Garwood Cir. -----	2		9										29	15			10	4
Hallettsville Cir. -----	4	1	11	4	5	7	6	10	8	9	10		59	25	24	11	14	18
Oakland Cir. -----	4		26	10	15	30	25	26	30	15	18		169	85			20	25
Schulenburg Cir. -----	3		25										75	40	10	12	10	25
Sublime Cir. -----	2		14															
Victoria Sta. -----	1		12	9	12	15	12	15	18	25	20		126	95		4		
Weimar Cir. -----	1		7		4	2	3	3		5		5	22	12				
Wharton Cir. -----	2	2	14	2	6	8	10		10	8	12		56	35	56	10	10	30
Yoakum Cir. -----	2		18	8	12	12	10	10	5	12	11		80	60	70	1	15	16
Columbus Cir. -----	2		13	8	17	14	15	18	15	8	8		103	37	61	3	20	12
Total -----	30	8	200	127	93	111	108	123	110	106	118	25	1090	654	315	44	177	170

WACO DISTRICT

Bremond Cir. -----	2	2	10	15	7	5	8	4	10	6	9		64	32	27	3	5	12
Bowman Cha. -----	2		16										81	61			25	28
Bethlehem Cir. -----	2		5										15	8			5	6
Calvert Sta. -----	1		9										52					52
Gurley Cir. -----	2	2	14	10	10	12	8	10	14	8	8		80	40				20
LottGroesbeck Cir. -----	2		14										42		30		22	25
Lott Cir. -----	1		4	4	3			2			2		11	5	5			3
Marlin Sta. -----	1		10	16	12	10	8	10	14	12	9		85		31	7	20	31
Mart Cir. -----	3		12						3	150	25		125	75	125		10	12
Maysfield Cir. -----	2		19	10	9	5	10	12	8		11		84	45			16	39
Rocky Cir. -----	2		15										85	40	60	7	20	15
Waco Cir. -----	2		9		6	5	4	5	10				30	20			3	4
Waco, Mt. Zion -----	1		7	10	25	18	9	5	12	4	7	2	92	45	92	11	25	12
Waco, St. James -----	1	1	14	2	40	65	70	25	10	8	15		237	65	210	5	25	48
Cameron -----	1		3	3		2				2	15		22	12			2	
Kosse Cir. -----	2		9										42	36		10	3	
Waco, Jones Chapel -----	1		8		5	9	7	9			6		50	40		3	10	20
Lorena -----																		
Total -----	31	25	191	80	133	146	152	91	90	145	101	2	1227	584	608	52	209	371

Sunday School Statistics

CORPUS CHRISTI DISTRICT

NAMES OF CHARGES OR CHURCHES	Schools on Charge	Schools Using Graded Lessons	Officers and Teachers	PUPILS ENROLLED								All Depts., Cradle Roll, Home Dept., Officers, Teachers, Pupils	Average Attendance	Pupils, incl. Home Dept. Ch. Mem. or Prep. Mem.	Accessions to Church from Mem. of S. S.	Paid by Sunday School in World Service	Paid for Sunday School Supplies	
				Cradle Roll	Beginners	Primary	Junior	Intermediate	Senior	Young People	Adults							Home Department
Bloomington Cir. -----	3	3	15	20			3	1		2	4		45	25			10	
Brownsville Cir. -----	2	1	12	6	10	8		10	15	21	10		80	55	46	2	8	35
Beeville Cir. -----	1		3										10	7		1	5	4
Bishop and Robstown -----	1		8	1	15		8		7				38	23		1	10	14
Corpus Christi Sta. -----	1																	
Eddingburg Cir. -----																		
Falfurias Cir. -----																		
Goliad Sta. -----	1	1	10	10	10	10	5	5	5	5		20	50	30		1	25	12
Harlingen Cir. -----																		
Kingsville Cir. -----	1		4			4	2	4	4	2	4		24	15	14	4	10	9
Mathis and Alice -----	1		3										7					
Odoms Cir. -----	1		3										65					5
Raymondsville -----																		
San Juan Cir. -----																		
Total -----	11	5	58	37	35	22	18	20	31	30	18	20	269	155	60	9	68	80

Epworth League Statistics

AUSTIN DISTRICT

List No.	NAME OF CHARGES	EPWORTH LEAGUE								
		Senior League		Intermed. League		Junior League		Epworth Heralds Taken	Paid to Central Office	Paid to World Service
		Chapters	Members	Chapters	Members	Chapters	Members			
1	Simpson Tab., Austin	1	25	1	15	1	35	2		10
2	Wesley Chapel, Austin	1	75	1	25	1	50	6	5	50
3	Austin Cir.									
4	Cedar Creek									
5	Fayetteville	1	30	1	15					5
6	Georgetown Sta.					1	14			
7	LaGrange Sta.	1	10			1	8			2
8	Hutto Cir.	1	13			1	18	2		
9	Giddings Cir.	1	8			1	7			
10	Littig and Maynor									
11	Lockhart Cir.	2	18	1	10	1	19	4		
12	Luling Cir.	1	18			1	24			15
13	Smithville Cir.	1	18			1	21	1		
14	Winchester Cir.	1	30			1	15			
15	San Marcos	1	5							8
	TOTAL	13	280	4	65	11	229	17	5	90

CORPUS CHRISTI DISTRICT

1	Bloomington Cir.									
2	Brownsville Cir.									
3	Beeville Cir.	1	18			1	10			10
4	Bishop and Robstown									
5	Corpus Christi	1	15			1	12			10
6	Eddingburg Cir.									
7	Falfurris Cir.									
8	Goliad Sta.	1	30	1	15	1	20	4	1	20
9	Harlingen Cir.									
10	Kingsville Cir.	1	6	1	6					10
11	Mathis and Alice									
12	Odoms Cir.									
13	Raymondville									
14	San Juan Cir.									
15	Sinton and Taft									
16	San Benito Cir.									
	TOTAL	4	69	2	21	3	42	4	1	50

DALLAS DISTRICT

1	Corsicana Cir.									
2	Denison Sta.	1	21			1	28			20
3	Dallas, St. Paul	1	72			1	43	9		20
4	Dallas, Trinity	1	24			1	14		3	11
5	Dallas, Warren	1	12							9
6	Dallas, Wesley	1	10			1	4			5
7	Ennis and Ferris	1	8			1	10	1		
8	Ft. Worth, St. Andrews	1	100	1	25	1	30			
9	Ft. Worth, Thompson Chapel	1	50			1	25			20
10	Hubbard and Dawson									
11	Milford and Italy	3	25			1	8			
12	Mexia Cir.	2	40	2	30	3	30			18
13	Pelham Cir.	3	60	1	15					
14	Pilot Point	1	10			1	5			
15	Sherman Sta.	1	12			1	4			
16	Waxahachie Cir.	1	12							5
17	Wichita Falls									
18	Cowan Chapel	1	10					2		5
	TOTAL	20	466	4	70	13	201	12	3	133

Epworth League Statistics

SAN ANGELO DISTRICT

List No.	NAME OF CHARGES	EPWORTH LEAGUE								
		Senior League		Intermed. League		Junior League		Epworth Heralds Taken	Paid to Central Office	Paid to World Service
		Chapters	Members	Chapters	Members	Chapters	Members			
1	Abilene	1	8							
2	Belton Sta.	2	16	1	10	2	22			7
3	Brownwood Cir.									
4	Bartlett Cir.									
5	Cleburne Cir.									
6	El Paso Sta.	1	10							
7	Llano Cir.	1	12			1	16			
8	San Angelo	1	25	1	10	1	15			15
9	Temple Sta.	1	10			1	15			5
10	Valley Mills									
11	San Saba									
12	Moody Cir.									
13	Lubbock									
	TOTAL	7	81	2	20	4	68			22

SAN ANTONIO DISTRICT

1	Belmont Cir.	1	14							
2	Cuero Sta.	1	14			1	17			20
3	Floresville Cir.	2	10			1	4			10
4	Gonzales Sta.									
5	Hondo Cir.	2	20			2	26			10
6	Jacob's Chapel	1	65	1	15	1	20	3		25
7	Kerrville Cir.	1	30			1	10			10
8	Kerr Hill, S. A.	1	16			1	12			10
9	Nixon Cir.									
10	Olmos Cir.	1	10			1	10			
11	Pearsall Cir.									
12	Pleasanton Cir.	1	15			1	17			6
13	Seguin Cir.	1	12			1	10			11
14	St. Paul, S. A.	1	75	1	15	1	56			50
15	West End, S. A.	1	25							5
16	Yorktown Cir.									
17	East St. Paul	1	20			1	12			
18	Lavernia Cir.									
19	San Antonio Heights, S. A.									
20	Gonzales Cir.									
21	Lincoln Heights									
22	Jones Chapel	1	25			1	20	3		20
	TOTAL	16	364	2	30	13	213	6		177

WACO DISTRICT

1	Bremond Cir.	2	25			2	20			
2	Bowman Chapel	1	38	1	8	1	16			
3	Bethlehem Cir.									
4	Calvert Sta.	1	18			1	14			
5	Chilton Cir.	2	24	1	12	2	20			10
6	Gurley Cir.	1	10			1	15			
7	Groesbeck Cir.	2	16			1	15			
8	Lott Cir.									
9	Marlin Sta.	1	20			1	15			
10	Mart Cir.	1	25			1	12			
11	Maysfield Cir.	1	18		1	10				
12	Rocky Cir.	2	30			2	25			20
13	Waco Cir.					1	20			2
14	Waco, Mt. Zion	1	20			1	34	1		28
15	Waco, St. James	1	30							20
16	Cameron									
17	Kosse Cir.									
18	Waco, Jones Chapel	1	10	1	25	1	20			
	TOTAL	17	284	3	46	25	226	1	1	80

Epworth League Statistics

VICTORIA DISTRICT

NAME OF CHARGES	EPWORTH LEAGUE								
	Senior League		Intermed. League		Junior League		Epworth Heralds Taken	Paid to Central Office	Paid to World Service
	Chapters	Members	Chapters	Members	Chapters	Members			
eyton and Eagle Lake	1	20							
ogne Cir.	2	25			20	1		5	
umbus Sta.	3	32			1	15			21
na Cir.	1	14			1	15			10
wood Cir.									
lettsville Cir.	1	9	1	10	1	14			6
land Cir.	3	25			1	20			15
ulenburg Cir.	3								
olime Cir.									
toria Sta.	1	45			1	35			21
imar Cir.									
arton Cir.	1	8	1	15	1	12	2		5
akum Cir.	2	30			1	15			15
umbus Ct.	1	8			1	28		1	5
TOTAL	18	216	2	26	28	155	2	6	93

Conference Treasurer's Report

AUSTIN DISTRICT

List Number	NAMES OF CHARGES OR CHURCHES	W'ld S'rv. DISCIPLINARY BENEVOLENCES							OTHER CASH ITEMS					
		On Apportionment	Specials; Annuities Legacies, etc.	Children's Day Fund	Woman's Foreign Missionary Society	Woman's Home Missionary Society	Total Disciplinary Benevolence	Educational End., B'ld'gs, Special Gifts	Hospitals and Homes: End. Buildings, Special Gifts.	Total Ben. ordered by Annual Conference	Support of Dist. Supt. incl. House Rent, Admin. Exp.	Support of Bishops (Episco- pal Fund)	Support of Conference Claimants	Annua. Con. Investment for Conference Claimants
1	Austin Cir.	34				34	4		4	40	12	7		3
2	Austin, Simpson	160		5	5	20	190	37	37	138	10	25		5
3	Austin, Wesley Chapel	535				35	570	265	265	315	10	58		15
4	Austin Mission													
5	Cedar Creek Cir.	25				25				90				
6	Fayetteville Cir.	50				50				90				
7	Georgetown Sta.	124		3		127	25		25	85	5	10		8
8	Giddings Cir.	20				20	2		2	46	1	1		1
9	Hutto and Granger	25				25	2		2	70	2	3		3
10	LaGrange Cir.	50			3	53	6		6	88	5	12		5
11	Lockhart Cir.	30				30								
12	Luling Cir.	140				140	32		32			15		
13	Littig and Manor Cir.	17				17				61	1			
14	Liberty Hill Cir.													
15	Smithville Cir.	17				17	6		6	89	1	3		3
16	San Marcos Cir.	40			6	46	1		1	41	1	1		2
17	Winchester Cir.	94				94	8		8	117	4	10		8
	TOTAL	1361		8	5	64	1438	388	388	1270	52	145		53

CORPUS CHRISTI DISTRICT

1	Beeville Cir.	100				3	103	16	16	100	2	2		
2	Bishop and Robstown Cir.	10					10			20				
3	Corpus Christi Sta.	88			5	5	98			100	2	10		2
4	Eddingburg Cir.	2					2			3				
5	Falfurris Cir.													
6	Goliad Cir.	115				4	119				7	5		5
7	Kingsville Cir.	75				4	79	10	10	100	3	10		1
8	Mathis and Alice Cir.	9					9			20				
9	Placedo Cir.	40					40	12	12	60				
10	Raymondsville													
11	San Benito Cir.													
12	Sinton and Taft Cir.													
13	Brownsville Cir.													
14	Odem Cir.													
	TOTAL	439			5	16	460	38	38	423	14	27		8

DALLAS DISTRICT

1	Angus Cir.	1					1						1	
2	Corsicana Cir.	26					26			66				
3	Dallas, St. Paul Sta.	1010		7	4	15	1036	215	215	360	50	120		5
4	Dallas, Trinity	85			10		95	10	10	85	2	4		4
5	Dallas, Warren	44		1			45	9	9	31	2	2		2
6	Dallas, Wesley Morgan	65					65	21	21	52	4	11		3
7	Denison Sta.	150					150	10	10	105	7	8		1
8	Ennis and Ferris	100				6	106	15	15	120	3	12		2
9	Fort Worth, Cowan Chapel	50					50	25	25	50	2	3		1
10	Fort Worth, St. Andrews	900					900	200	200	330	36	100		40
11	Ft. Worth, Thompson Chapel	150				7	157			144	4	8		4
12	Hubbard and Dawson	75					75	4	4	84	5	4		2
13	Mexia Cir.	84					84	5	5	180	1	1		2
14	Milford and Italy	27				2	29	20	20	110	5	10		5
15	Maypearl Cir.													
16	Pelham Cir.	200				10	210	32	32	184	17	22		9
17	Sherman and Pilot Point	36					36	4	4	100	2	3		2
18	Waxahachie Cir.	90		2			92	8	8	93	1			2
19	Wichita Falls Sta.	80					80	30	30	97	14	25		7
	TOTAL	3173		10	14	40	3237	608	608	2191	155	334		84

Conference Treasurer's Report

SAN ANTONIO DISTRICT

NAMES OF CHARGES OR CHURCHES	W'ld S'rv.		DISCIPLINARY BENEVOLENCES						OTHER CASH ITEMS				G. Total, incl. Dis. and Ann. Con. Ben.; Other Cash Items	
	On Apportionment	Specials; Annuities Legacies, etc.	Children's Day Fund	Woman's Foreign Missionary Society	Woman's Home Missionary Society	Total Disciplinary Benevolence	Educational End., B'l'd'gs, Special Gifts	Hospitals and Homes: End. Buildings, Special Gifts.	Total Ben. ordered by Annual Conference	Support of Dist. Supt. incl. House Rent, Admin. Exp.	Support of Bishops (Episcopal Fund)	Support of Conference Claimants		Annual Con. Investment for Conference Claimants
ilene Cir.-----	50					50			100		2			152
rtlett Cir.-----	50					50	3	3	128			10		191
ton-Kells Branch-----	107	6			16	129	9	9	160	2		5	3	308
ownwood Cir.-----	59		1			60	29	29	160	7			6	264
burne Cir.-----									15					15
Paso Sta.-----	84				20	104	19	19	160	3		5	1	292
ody Cir.-----	34					34			88	1		5	2	130
obock Cir.-----					2	2			60					62
no Cir.-----	50	5			5	60	20	20	86	10		11	1	188
a Saba Cir.-----	53					53	6	6	100	2		5	2	168
a Angelo Sta.-----	100			4	10	114	59	59	130	7		20	2	332
mple Sta.-----	160			3	10	173	31	31	128	1		3		336
lley Mills Cir.-----	20					20	5	5	100			7		132
TOTAL -----	767	11	1	7	63	849	181	181	1415	35	71		17	2570

SAN ANTONIO DISTRICT

mont Cir.-----														
ero Sta.-----	225			5	10	240	18	18	160			15		433
resville Cir.-----	100					100	11	11	140	1				252
nzales Sta.-----	77	5	5	2		89			140	5		2	3	239
nzales Cir.-----	18					18	2	2	72	3		8	3	125
ndo Cir.-----	91				1	92	3	3	160					255
rrville Cir.-----	140					140			140					280
vernia Cir.-----	80													
ton Cir.-----	25				1	28								
nos Cir.-----	25				2	27			135	2		5		170
arsall Cir.-----	30					30				2		3		32
asanton Cir.-----	30					30				3		10		43
asanton Cir.-----	25			2	2	29	21	21	100	1		8	2	161
ruin Cir.-----	133			4	3	140	6	6	140	5		8	2	302
n Antonio, E. St. Paul-----	25					26	20	20	100	5		3	5	159
n Antonio, Jacob's Chapel-----	350		3	5	10	368	10	10	180	25	25		5	613
n Antonio, Jones Chapel-----	85					85	10	10	110	2		2	1	210
n Antonio, Lincoln Heights-----	51					51	8	8	80	2		2	3	148
n Antonio, Sanford Chapel-----	200					200	6	6	140	10		10	3	369
n Antonio, St. Paul-----	1100			4	52	1156	85	85	360	25	54	8	10	1698
ektown Cir.-----	23					23			40					63
TOTAL -----	2753	5	8	25	81	2842	200	200	2197	91	145	23	35	5582

CORPUS CHRISTI DISTRICT

eyton Cir.-----														
ogue Cir.-----	55		9	1	1	66			108	2		5		181
umbus Sta.-----	163					163			132	2		7		304
umbus Cir.-----	60				5	66	14	14	134	1		5		220
na Cir.-----	75				12	87			188	6		13		294
wood Cir.-----	44				5	49	2	2	60	2		3	1	117
lettsville Cir.-----	168				20	188	30	30	132	3		9	1	363
land Cir.-----	130				21	152	21	21	140	2		6	2	323
ulenburg Cir.-----	82		1		5	88	29	29	117	5		8	1	248
olime Cir.-----	28		3		1	32			5					37
toria Sta.-----	328				44	376	44	44	175	7	28			630
imar Cir.-----	1					1			25					26
arton Cir.-----	55					55	5	5	100			5		165
ukum Cir.-----	111				10	125	45	45	140	5		20	3	338
TOTAL -----	1300		13	11	124	1448	190	190	1456	35	109		8	3246

Conference Treasurer's Report

WACO DISTRICT

List Number	NAMES OF CHARGES OR CHURCHES	W'ld S'rv. DISCIPLINARY BENEVOLENCES										OTHER CASH ITEMS				Con. Ben.; Other Cash Items G. Total incl. Dis. ann.					
		On Apportionment	Specials; Annuities Legacies, etc.	Children's Day Fund	Woman's Foreign Missionary Society	Woman's Home Missionary Society	Total Disciplinary Benevolence	Educational End., B'ld'gs, Special Gifts	Hospitals and Homes: End. Buildings, Special Gifts.	Total Ben. ordered by Annual Conference	Support of Dist. Supt. incl. House Rent, Admin. Exp.	Support of Conference Claimants	Support of Bishops (Episco- pal Fund)	Annual Con. Investment for Annual Conference	General Con. Expenses						
1	Aquilla Cir.-----	30																			30
2	Bowman Chapel Cir.-----	123									5		5	156	2	5					295
3	Bremond Cir.-----	20			1	3					3		3	152	1	1					181
4	Calvert Cir.-----	74												140	2	2					221
5	Cameron Cir.-----	10												9		2					25
6	Chilton Cir.-----	40										14	14								58
7	Groesbeck Cir.-----	114				10					8		8	134	2	4					275
8	Highbank Cir.-----																				
9	Kosse Cir.-----	40									10		10	72	2	3					129
10	Lott Cir.-----	10												26	1	2					40
11	Lorena Cir.-----	5														1					6
12	Mart Cir.-----	100									10		10	200	2	2					316
13	Maysfield Cir.-----	48									7		7	140	2	4					204
14	Marlin Sta.-----	300				10					42		42	200	6	31					600
15	Rocky Cir.-----	41												149	2	3					200
16	Satin-Majors Cir.-----	47				10					2		2	144	2	5					212
17	Waco, Jones Chapel-----	82									19		19	100	4						206
18	Waco, Mt. Zion-----	116			2	2					8		8	99	6	14					253
19	Waco, St. James-----	351				10					35		35	300	25	50					794
20	Waco Circuit-----	20									5		5	80	4	6					119
	TOTAL-----	1571			1	45	1626			168		168	2101	63	135						4162

Conference Treasurer's Report Recapulation

	DISCIPLINARY BENEVOLENCES	Benevolences as Ordered by the										OTHER CASH ITEMS						
		WORLD SERVICE					Annual Conference											
List Number	NAMES OF DISTRICTS	On Apportionment	Specials; Annuities, Legacies, etc.	Children's Day Fund	Woman's Foreign Missionary Society	Woman's Home Missionary Society	Total Disciplinary Benevolences	Educational Endow., Bldgs., Special Gifts to be used within Conf.	Hospitals and Homes; Endow., Buildings, Special Gifts	City Missionary or Church Extension Society	Sustentation Fund	Total Benevolences Ordered by the Annual Conference	Support of Dist Supt. incl. Rent and Administrative Expenses	Support of Bishops (Episcopal Fund)	Support of General Conference Claimants	Annual Conference Investments for Conf. Claimants	General Conference Expenses	Grand Total Including Disciplinary and Annual Conf. Benevolences; other Cash Items
1	Austin District	1316		8	5	64	1373	474				396	1170	52	146		53	3265
2	Corpus Christi District	439			5	14	458	38				38	423	14	27	2	6	968
3	Dallas District	3173		10	26	28	3237	602				583	2191	152	334		100	6489
4	San Angelo District	667	11	1	7	63	884	150	31			414	1315	35	71		17	2485
5	San Antonio District	2723	10	8	23	80	2842	190	1			191	2197	91	115	28	35	5787
6	Victoria District	1321		13	11	124	1068	192		1	4	191	1456	35	109	5	8	3381
7	Waco District	1602			15	36	1637	168				228	2101	63	141		64	4738
	TOTAL	11255	21	40	92	409	11499	1814	34	1	4	2041	10853	442	943	35	283	27113

Memoirs

Memoirs.

Rev. J. C. Eusan departed this life February 21, 1927, San Antonio, Texas.

Rev. C. N. Strait departed this life February 15, 1927, Georgetown, Texas. *p 28 in 1925 journal*

Mrs. J. D. Mackey departed this life June 15, 1927, Luling, Texas.

Little Ellen Henrietta Mosby departed this life November 13, 1927, Kerrville, Texas.

Peace to the ashes of those who have slept that sleep to never awake.

Roll of the Dead

Roll of the Dead.

Name	Date of Death	Place of Burial	Time Entered Ministry	Years in Ministry
J. B. Ferguson	January 6, 1874	Bell County	1854	20
J. S. Stricklin	March 25, 1878	Not given	1870	3
E. S. Havens	February 29, 1875	Girard, Kansas		
Reuben Coleman	December 3, 1857	Bastrop	1870	5
Isaac Wright	April 3, 1875	Austin	1874	2
J. G. Webster	March 14, 1877	Cottonwood Colony	1874	2
Ben Hoffman	March 31, 1878	Eagle Lake	1874	4
John Wright	January 17, 1880	Cottonwood Colony	1874	6
Archy Johnson	February 6, 1880	Giddings	1874	6
Hiram Melton	August 3, 1880	Limestone County	1874	6
Jacob Oakman	October 1, 1882	Flatonia	1872	10
Jack Johnson	October 1, 1882	Manor	1875	7
Larkin Carper	April 26, 1885	San Antonio	1870	15
Elijah Nesbitt	Sept. 21, 1885	Sprinkle	1874	10
Caesar King	August 16, 1885	Georgetown	1874	11
J. W. Robinson	September 1, 1888	Austin	1874	11
W. Goodwin	May 3, 1890	Manor	1876	14
Prince Wilson	October 9, 1890		1867	
J. H. Brawley	April 20, 1893	Luling	1887	6
G. W. Brothers	August 20, 1883	Cuero	1883	10
Tony Augustus	June 10, 1894	Columbus	1879	15
J. T. Purnell	October, 1894	Waco	1890	4
J. H. Williams	October, 1895	Denison	1893	2
J. T. Gibbon	August 3, 1895	San Antonio	1883	13
A. L. Armstrong	Sept. 10, 1896	Gatesville	1893	13
Daniel Harper	September 1, 1896	Victoria	1874	22
Nathan Caswell	December 20, 1896	Austin	1875	21
C. L. Madison	Sept. 16, 1900	Austin	1876	24
B. F. Smith	March 20, 1902	Winchester	1877	25
Lee A. Harvey	July 4, 1902	Cedar Creek	1896	6
A. S. Bethany	June 30, 1902	Fort Worth	1893	9
Chas. Hart	August 10, 1902	Winchester	1877	25
Daniel Humphry	July 4, 1903	Marlin	1877	25
John Neal	March 22, 1908	Davilla	1894	9
Samuel Gates	February 25, 1905	Austin	1874	31
Anderson Brack	Sept. 10, 1905	Waco	1874	31
Mack Henson	June 17, 1905	Austin	1874	31
Andrew Foster	Nov. 26, 1906	Victoria	1880	36
James Jorman	December 9, 1908	Seguin	1877	29
B. I. Adams	March 19, 1908	Littig	1893	15
Gabrial Wilson	July 16, 1908	Calvert	1875	33
Thomas Watkins	April 10, 1908	Martin	1886	22
Willis Graves	May 10, 1908	Waco	1876	32
G. A. Shanklin	Dec. 19, 1900	Hubbard City	1881	19
J. T. Jacobs	March 11, 1911	San Antonio	1882	29
W. H. Davis	Sept. 12, 1910	Seguin	1882	29
Jefferson Buel	June 10, 1910	Waco	1877	29
C. P. Westbrook	Dec. 30, 1911	Hubbard	1885	26
A. J. Lynch	March 18, 1911	Victoria	1893	18
J. W. Mitchell	December 7, 1911	Bremont	1878	33
R. H. Ponton	Sept. 19, 1912	Belton	1882	25
M. C. Caviness	June 28, 1912	Lockhart	1887	25
J. H. Holden	May 1, 1912	Hondo	1887	25
Lee Reed	May 14, 1913	San Antonio	1881	25
EE Henderson	Sept. 9, 1913	Luling	1881	32
Alfred Dickerson	June 9, 1913	Sprinkle	1897	26
F. L. Kirkpatrick	December 7, 1915	Austin	1897	18
Granville Norman		Los Angeles		7
Joseph Harriford		Victoria	1894	23
J. S. Wyatt		Winchester	1887	30
Christopher Young		Victoria	1875	43
G. W. Townsend	Dec. 31, 1916	Victoria	1883	33
W. E. Blackson		Austin	1899	18
W. H. Mosby			1916	
John Bickham	February, 1916	Gonzales	1888	
R. S. Lovinggood	January, 1916	Marlin	1891	
L. R. Parker	February, 1916	Austin	1900	16
A. T. Jackson		Smithville	1901	
Ephraim Jones		Dallas	1887	34
P. B. Bennett	April, 1918	Seguin		27
	1918	Waco	1887	31

ROLL OF THE DEAD (cont'd)

Riley Sodia	1918	Beeville	
C C. Scruggs	1919		
R. D. Dennis	1919	Calvert	
A. Lockhart	1919	Waco	
E. L. Jackson	1921	Temple	
C. H. Franklin	1921	San Antonio	
J. W. Wormly	1921	Winchester	
G. W. Nevils	1922	LaGrange	
Primus Gates	1922	LaGrange	
A. L. Carper	1924	San Antonio	
S. D. Humphrey	1922	Marlin	
D. C. Hailey	1924	Waxahachie	
B. J. Goff	1925	Waco	
D. C. Lacey	1925	Mexia	
Harry Swann	1925	Victoria	
W. H Stevens	1925	Winchester	
W. H. Purnell	1925	Waco	
Moses Smith	1925	Austin	
Moten Lott	1925	Austin	
W. M. Mooney	1925	Cuero	
J. C. Mays	1925	Temple	
Albert Johnson	1926	Smithville	
C. N. Strait	1927	Georgetown	
J. C. Eusan	1927	San Antonio	

CONFERENCE WIDOWS.

	Years
Buell, Mrs. Matilda	6
Brawley, Mrs. Addie	6
Blackson, Mrs. W E.	12
Bennett, Mrs. P. B.	25
Caviness, Mrs.	3
Carper, Mrs. A. L.	25
Dennis, Mrs. R. D.	14
Dickson, Mrs. H.	10
Gates, Mrs. Primas	17
Henson, Mrs. Mack	25
Holden, Mrs. J. H.	16
Kirkpatrick, Mrs. F. L.	16
Lynch, Mrs. A. J.	1
Mitchell, Mrs. W. J.	15
Mosby, Mrs. W. H.	17
Nevels, Mrs. G. W.	12
Hoffman, Mrs. J. H.	111
Ponton, Mrs. R. H.	24
Shanklin, Mrs. G. A.	10
Smith, Mrs. I. S.	15
Soda, Mrs. R.	11
Townsend, Mrs. G. W.	15
Westbrooks, Mrs. C. P.	13
Brothers, Mrs. Annie	6
Purnell, Mrs. W. H.	8
Lacy, Mrs. D. C.	27
Mooney, Mrs. W. M.	24
Smith, Mrs. Moses	32
Goff, Mrs. B. J.	18
Humphrey, Mrs. S. D.	7
Stevens, Mrs. W. H.	15
Johnson, Mrs. A.	19
Eusan, Mrs. J. C.	22
Strait, Mrs. C. N.	4

Historical

Historical

CONFERENCE HISTORY

The Methodist Episcopal Church was organized in annual conference relations in New Orleans, La., December 25, A. D. 1865, by Bishop Thompson. The Conference then organized included Louisiana, Mississippi and Texas, and was named the "Mississippi Mission Conference." Three annual sessions of this conference were held and in January, 1867, the Texas Conference was organized out of the Mississippi Mission Conference, which included the entire State of Texas. There were eight annual sessions of the Texas Conference held, and it was during the eighth session of the Texas Conference held at Marshall, Texas, January 7, 1874, that the "West Texas Conference" was organized with Bishop Thomas Bowman, president. The ministers comprising the West Texas Conference were called to meet in Wesley Chapel Methodist Episcopal Church in Austin, Texas, January 22, 1874. The president of that Conference was Bishop Bowman. Those present in the organization were: G. W. Honey, Jacob Miller, Mack Henson, Daniel Gregory, Samuel Allen, W. O. Sheety, Larkin, Carper, Archie Johnson, J. T. Hill, T. T. Leach, T. G. Lacy, Alex Campbell, London Morris, Isaac Wright, Cyrus Hackett, Daniel Harper and Charles Scruggs. All have finished their course and rest from their labors. This conference to date has seven districts, one hundred seven pastoral appointments and a school that is a credit to the denomination, viz.: Samuel Huston College, located at Austin, Texas.

CONFERENCE SESSIONS

Bishops	Secretaries	Place	Time
Edward Thompson	J. P. Newman	New Orleans	Dec. 25, 1865
Mathew Simpson	J. P. Newman	New Orleans	Dec. 13, 1866
E. R. Ames	J. B. Lynch	New Orleans	Dec. 19, 1867
Bishops	Secretaries	Place	Time
Mathew Simpson	Joseph Welch	Houston	Jan. 3, 1867
E. R. Ames	G. W. Honey	Houston	Jan. 3, 1868
Mathew Simpson	Joseph Wetlich	Austin	Jan. 21, 1869
Levi Scott	G. W. Honey	Houston	Jan. 14, 1870
Levi Scott	G. W. Honey	Houston	Dec. 14, 1870
E. S. Janes	G. W. Honey	Austin	Dec. 6, 1871
J. W. Wiley	W. B. Fayle	Galveston	Jan. 8, 1872
Thos. Bowman	W. B. Fayle	Marshall	Jan. , 1873
Bishops	Secretaries	Place	Time
Thos. Bowman	G. W. Honey	Austin	Jan. 23, 1874
A. L. Harris	L. H. Carhart	Columbus	Feb. 22, 1875
E. G. Andrews	L. H. Carhart	Austin	Feb. 20, 1876
R. S. Foster	A. M. Gregory	Waco	Nov. 22, 1877
Gilbert Haven	A. M. Gregory	Columbus	Nov. 28, 1878
S. M. Merrell	B. F. Smith	Victoria	Dec. 3, 1879
E. O. Haven	B. F. Smith	Austin	Dec. 1, 1880
H. W. Warren	B. F. Smith	Calvert	Dec. 1, 1881
Thos. Bowman	B. F. Smith	Columbus	Dec. 7, 1882
E. G. Andrews	B. F. Smith	San Antonio	Dec. 12, 1883
W. L. Harris	B. F. Smith	Waco	Dec. 4, 1884
R. S. Foster	B. F. Smith	Austin	Dec. 18, 1885
J. F. Hurst	J. T. Gibbons	Victoria	Dec. 16, 1886
Thos. Bowman	J. W. Robinson	Columbus	Dec. 7, 1887
D. A. Godsell	J. T. Gibbons	Calvert	Feb. 7, 1889
J. M. Walden	J. T. Gibbons	San Antonio	Feb. 7, 1889
C. D. Foss	J. T. Gibbons	Waco	Feb. 6, 1890
S. M. Merrell	B. F. Smith	Austin	Feb. 5, 1891
J. N. Fitzgerald	J. T. Gibbons	Dallas	Dec. 15, 1892
H. W. Warren	A. Foster	Columbus	Dec. 14, 1893
E. G. Andrews	A. Foster	Calvert	Dec. 5, 1894
W. X. Ninde	A. Foster	Cuero	Dec. 2, 1895
W. F. Mallalieu	N. J. Johnson	Waco	Dec. 2, 1896
C. H. Fowler	N. J. Johnson	Austin	Dec. 8, 1897
D. A. Goodsell	N. J. Johnson	Denison	Dec. 6, 1898
I. W. Joyce	N. J. Johnson	Victoria	Dec. 22, 1899
I. W. Joyce	I. W. H. Pinkey	Dallas	Dec. 19, 1900
W. F. Millilien	A. Foster	Luling	Dec. 8, 1901
J. M. Walden	A. Foster	Waco	Dec. 18, 1902
L. B. Wilson	A. Foster	Fort Worth	Dec. 16, 1903
Henry Spellmeyer	T. H. Wyatt	San Antonio	Dec. 14, 1904
L. B. Wilson	T. H. Wyatt	Columbus	Nov. 30, 1905
Wm. Burt	T. H. Wyatt	Marlin	Dec. 13, 1906
W. M. Quayle	T. H. Wyatt	Victoria	Nov. 28, 1907
T. B. Neeley	T. H. Wyatt	Waco	Nov. 26, 1908
D. H. Moore	T. H. Wyatt	Austin	Nov. 25, 1909
T. B. Neeley	T. H. Wyatt	San Antonio	Nov. 6, 1910
Robert McIntyre	T. H. Wyatt	Luling	Nov. 23, 1911
Robert McIntyre	T. H. Wyatt	Calvert	Dec. 11, 1912
W. O. Sheppard	T. H. Wyatt	Austin	Dec. 13, 1913
W. O. Sheppard	T. H. Wyatt	Victoria	Dec. 10, 1914
R. J. Cooke	J. W. Warren	Waco	Dec. 9, 1915
W. O. Sheppard	J. W. Warren	Cuero	Dec. 13, 1916
C. B. Mitchell	J. W. Warren	Fort Worth	Dec. 11, 1917
C. B. Mitchell	J. W. Warren	Yoakum	Dec. 18, 1918
R. E. Jones	S. N. Harvey	Georgetown	Nov. 12, 1919
R. E. Jones	S. N. Harvey	Dallas	Dec. 8, 1920
R. E. Jones	F. W. Brown	San Antonio	Oct. 27, 1921
R. E. Jones	C. W. Franklin	Fort Worth	Dec. 6, 1922
R. E. Jones	C. W. Franklin	Austin	Dec. 5, 1923
F. T. Keeney	C. W. Franklin	Waco	Dec. 19, 1924
C. L. Mead	C. W. Franklin	Victoria	Dec. 16, 1925
R. E. Jones	C. W. Franklin	San Antonio	Dec. 8, 1926
			Nov. 30, 1927

Pastoral Record and Roll

CONFERENCE ROLL

G. F. Alexander	W. B. Lott
R. A. Appling	B. F. Lee
R. W. Allen	A. M. Mason
E. T. Allen	J. S. Medlock
J. G. Browne	J. D. Mackey
J. E. Brown	G. M. Mallory
Frank Blair	J. W. Mays
T. M. Bruton	K. W. McMillan
A. Brown	N. J. Moore
R. N. Brooks	S. D. Mosely
D. B. Baker	L. E. Muse
W. W. Baker	J. F. Muse
B. A. Byars	R. S. Mosby
M. B. Burkley	E. V. McRae
S. E. Blacknell	C. B. Melton
T. H. Bryant	T. S. Moore
J. T. Carper	P. H. Moore
J. H. Childs	J. H. Marshall
G. V. Cavett	Marshall Majors
V. A. Cook	H. O. McCutchin
John Coe	H. L. McKinney
James Coe	D. L. Mosby
O. B. Coe	J. H. Napier
Enoch Cogswell	J. B. Phoenix
E. E. Cooper	I. H. Pierce
G. A. Deslandes	P. H. Phillips
J. H. R. Dudley	R. L. Palmer
J. W. Downs	George Pleasnat
R. M. Davis	H. H. Qpalls
R. H. Duncan	J. D. Rice
W. M. Ellison	L. W. Roberts
M. C. Ellison	W. M. Reed
J. L. Edmondson	A. G. Russell
J. B. Eggleston	J. W. Stone
B. J. Easter	J. W. Stone, Jr.
T. B. Echols	Esau Smith
C. W. Franklin	J. H. Swann
T. H. Foy	J. H. Strait
M. Fountain	L. L. Strait
J. M. Foster	I. T. Sanford
U. V. Green	Clinton Schuler
Sam Graham	M. W. Stephens
S. N. Harvey	T. J. D. Sims
S. W. Harvey	N. H. Townsend
L. L. Haynes	Henry Tollerson
J. N. Hooey	Henry Tollerson
F. J. Hutchinson	W. L. Turner
J. H. Hutchinson	D. F. Vance
J. W. V. Hutchinson	J. W. Weakley
C. H. Hamilton	George Waters
J. J. Hardemon	W. M. White
E. C. Henderson	W. M. White
A. D. Holden	M. L. Wyatt
Henry Harrison	J. W. Warren
A. D. Jacques	J. W. Wright
H. A. Jones	J. A. Willis
S. E. Jones	J. L. Wattley
M. S. Jordan	C. S. Williams
H. J. Jackson	C. T. Wardah
P. H. Jenkins	C. E. Whittiker
H. E. Kuykendall	F. D. Young

Ministerial Record—Roll of Ministers' Wives

	Year Began		Year Began
Alexander, Mrs. G. F.	1919	Lott, Mrs. W. B.	1900
Appling, Mrs. R. A.	1911	Lee, Mrs. B. F.	1921
Allen, Mrs. R. W.	1925	Moore, Mrs. N. J.	1913
Allen, Mrs. E. T.	1926	Muse, Mrs. J. F.	1909
Brown, Mrs. J. G.	1916	Mosely, Mrs. S. D.	1916
Browne, Mrs. J. E.	1908	McCutchin, Mrs. H. O.	1924
Blair, Mrs. F.	1924	McMillan, Mrs. K. W.	1919
Bruton, Mrs. T. M.		Mason, Mrs. A. M.	
Brown, Mrs. A.	1882	Medlock, Mrs. J. S.	1927
Brooks, Mrs. R. N.		Mackey, Mrs. J. D.	
Baker, Mrs. D. B.	1921	Mallory, Mrs. G. M.	1921
Baker, Mrs. W. W.	1922	Mays, Mrs. J. W.	
Blacknell, Mrs. S. E.	1917	Mosby, Mrs. R. S.	1919
Byars, Mrs. B. A.		McRae, Mrs. E. V.	1927
Burkely, Mrs. M. B.	1923	Muse, Mrs. L. E.	1922
Brown, Mrs. J. H.	1926	Melton, Mrs. C. B.	
Bryant, Mrs. T. H.	1924	Moore, Mrs. T. S.	
Childs, Mrs. J. H.	1915	Moore, Mrs. P. H.	1920
Carper, Mrs. J. T.	1926	Marshall, Mrs. J. H.	1925
Cavett, Mrs. G. V.	1910	Majors, Mrs. M.	1925
Cook, Mrs. V. A.		McKinney, Mrs. H. L.	1926
Coe, Mrs. John	1909	Mosby, Mrs. D. L.	1925
Coe, Mrs. James	1908	Moten, Mrs. G. M.	
Coe, Mrs. O. B.		Napier, Mrs. J. H.	1919
Cogswell, Mrs. E.	1875	Phoenix, Mrs. J. B.	1925
Cooper, Mrs. E. E.		Pierce, Mrs. I. H.	1924
Conner, Mrs. C. E.	1926	Phillips, Mrs. P. H.	1921
Deslandes, Mrs. G. A.	1927	Palmer, Mrs. R. L.	
Dudley, Mrs. J. H. R.		Pleasant, Mrs. Geo.	
Downs, Mrs. J. W.	1912	Qualls, Mrs. H. H.	
Davis, Mrs. R. M.		Rice, Mrs. J. D.	1915
Duncan, Mrs. R. H.		Roberts, Mrs. L. W.	1910
Ellison, Mrs. M. C.	1921	Reed, Mrs. W. M.	
Ellison, Mrs. W. M.	1914	Russell, Mrs. A. G.	1921
Easter, Mrs. R. J.	1921	Stone, Mrs. J. W.	1899
Edmondson, Mrs. J. L.		Stone, Mrs. J. W., Jr.	1925
Egglestons, Mrs. J. B.	1920	Stephens, Mrs. M. W.	1912
Echols, Mrs. T. B.	1926	Stephens, Mrs. N. W.	1926
Franklin, Mrs. C. W.	1912	Swann, Mrs. J. H.	
Foy, Mrs. T. H.		Smith, Mrs. Esau	1926
Fountain, Mrs. M.	1903	Strait, Mrs. L. L.	
Foster, Mrs. J. M.		Strait, Mrs. J. H.	
Green, Mrs. U. V.	1926	Sanford, Mrs. I. T.	1907
Graham, Mrs. Sam		Schuler, Mrs. C.	
Henderson, Mrs. E. C.	1917	Simms, Mrs. T. J. D.	
Hooey, Mrs. J. N.	1914	Townsend, Mrs. N. H.	1893
Hutchinson, Mrs. J. W.		Thomas, Mrs. J. A.	
Hutchinson, Mrs. F. J.	1915	Tollerson, Mrs. Henry	1922
Holden, Mrs. A. D.	1924	Vance, Mrs. D. F.	1905
Harvey, Mrs. S. N.	1905	Wyatt, Mrs. T. H.	1915
Hardemon, Mrs. J. J.	1912	Wardah, Mrs. C. T.	
Haynes, Mrs. L. L.	1922	White, Mrs. W. M.	1921
Hutchinson, Mrs. J. H.		Whitaker, Mrs. C. E.	1924
Hamilton, Mrs. C. H.	1913	Weakley, Mrs. J. W.	
Harris, Mrs. A. M.	1926	Waters, Mrs. Geo.	1898
Harvey, Mrs. S. W.	1882	White, Mrs. W. W.	
Hudspeth, Mrs. F. M.		Wyatt, Mrs. M. L.	1911
Jacques, Mrs. A. D.		Warren, Mrs. J. W.	1904
Jenkins, Mrs. P. H.	1921	Wright, Mrs. J. W.	1903
Jones, Mrs. H. A.	1912	Wills, Mrs. J. A.	1925
Jones, Mrs. S. E.		Wattley, Mrs. J. L.	1919
Jordan, Mrs. M. S.		Williams, Mrs. C. S.	
Jackson, Mrs. H. J.	1927	Willis, Mrs. H. C.	1926
Kuykendall, Mrs. H.	1922	Young, Mrs. F. D.	1923

Probationers

FIRST YEAR—

Marcus Freeman, Joel S. Jordan, Zan Holmes, Bebra King, Wm. Mosely, Dee Tucker, John H. Brown, Newton W. Stephens, Henry C. Willis, Jacob A. Thomas.

SECOND YEAR:

Charles E. Connor, Allen M. Harris, Francis M. Hudspeth, G. M. Moten.

GENERAL CONFERENCE DELEGATES SINCE ORGANIZATION, 1874

1876 Ministerial: C. L. Maderson.

1880 Ministerial: C. L. Maderson and Samuel Gates.

1884 Ministerial: C. L. Maderson and Samuel Gates.

1888 Ministerial: Harry Swann and Moses Smith.

1892 Ministerial: Harry Swann and B. F. Smith.

1896 Ministerial: Harry Swann and Moses Smith.

1900 Ministerial: Harry Swann and A. M. Mason.

1904 Ministerial: Harry Swann and A. M. Mason.

1908 Ministerial: D. C. Lacy and L. H. Richardson.

Lay delegates: R. S. Lovinggood and J. W. Frazier.

1912 Ministerial: Harry Swann and L. H. Richardson.

Lay delegates: R. S. Lovinggood and S. H. Gates.

1916 Ministerial: Harry Swann and D. C. Lacy.

Lay delegates: R. S. Lovinggood and R. L. Smith.

1920 Ministerial: T. H. Wyatt and J. W. Warren.

Lay delegates: M. S. Davage and R. A. Atkinson.

1924 Ministerial: R. N. Brooks and L. H. Richardson.

Lay Delegates: W. D. Kirkpatrick and Mrs. D. N. Swann

1928 Ministerial: K. W. McMillan, R. N. Brooks, T. B. Echols

Lay Delegates: T. R. Davis, J. S. Henry, R. A. Atkinson.

THE UNIVERSITY OF CHICAGO

PH.D. THESIS

BY

THE AUTHOR

CHICAGO, ILL.

1900

THE UNIVERSITY OF CHICAGO

PH.D. THESIS

BY

THE AUTHOR

CHICAGO, ILL.

1900

THE UNIVERSITY OF CHICAGO



